

RESTORATION HARDWARE

RECLAIMED RUSSIAN OAK BALUSTER DINING TABLE



120" Rectangular Extension Table

60" Rectangular Extension Table	60"L x 36"W x 30½"H Extends to 90"L with two 15" breadboard extensions; seats up to 6 with extensions, 4 without*	108" Rectangular Extension Table	108"L x 39½"W x 30½"H Extends to 144"L with two 18" breadboard extensions; seats up to 12 with extensions, 10 without*
72" Rectangular Extension Table	72"L x 36"W x 30½"H Extends to 102"L with two 15" breadboard extensions; seats up to 8 with extensions, 6 without*	120" Rectangular Extension Table	120"L x 39½"W x 30½"H Extends to 156"L with two 18" breadboard extensions; seats up to 14 with extensions, 12 without*
84" Rectangular Extension Table	84"L x 36"W x 30½"H Extends to 120"L with two 18" breadboard extensions; seats up to 10 with extensions, 8 without*	48" Round Table	48" diam., 31"H Seats up to 5**
96" Rectangular Extension Table	96"L x 39½"W x 30½"H Extends to 132"L with two 18" breadboard extensions; seats up to 12 with extensions, 8 without*	60" Round Table	60" diam., 31"H Seats up to 7**
		72" Round Table	72" diam., 31"H Seats up to 9**

@ Unlimited Furniture Delivery at a low flat rate based on delivery area. See a store associate or our website for details.

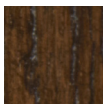
See our website for pricing, additional views and more of our dining collections.

*Seating capacity based on 20"W Side Chairs along the length and an Armchair at each end.

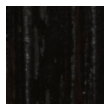
**Seating capacity based on 20"W Side Chairs.



Reclaimed
Natural Oak



Reclaimed
Brown Oak



Reclaimed
Black Oak

RESTORATION HARDWARE

RECLAIMED RUSSIAN OAK BALUSTER DINING TABLE

FEATURES

Handcrafted of solid reclaimed white oak timbers from decades-old buildings in Russia, our trestle-style table draws from a tradition of dining and banqueting furnishings that dates to the 17th century.

- Tabletop handcrafted of solid reclaimed oak timbers
- During use, extensions secure with hand-tightened, grip-equipped screws
- Rough-hewn planks are carefully hand-selected, planed and sanded
- Tabletop bears the patina of reclaimed wood and is accented with distinctive nicks, exposed knots and imperfections that speak to the wood's provenance
- By their nature, salvaged wood planks may be somewhat uneven, and may cup or bow slightly over time, further enhancing their rustic one-of-a-kind character;

cracks will be present

- This item is artisan crafted with meticulous care. Given its handmade and hand-finished nature, variations in the wood are to be expected and celebrated. No two items are exactly alike.

CARE

Clear furniture wax can be applied to protect the finish from minor spills. Use coasters or placemats to help prevent marks or stains. Avoid mineral oil, as its usage could discolor the wood. Wipe the table clean with a soft, dry cloth after each use.

SWATCHES

Wood swatches available for purchase online, in stores or by calling 800.816.0901.