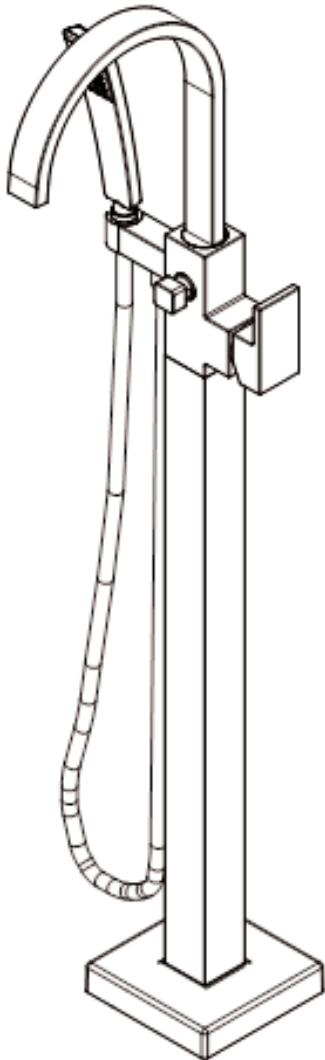
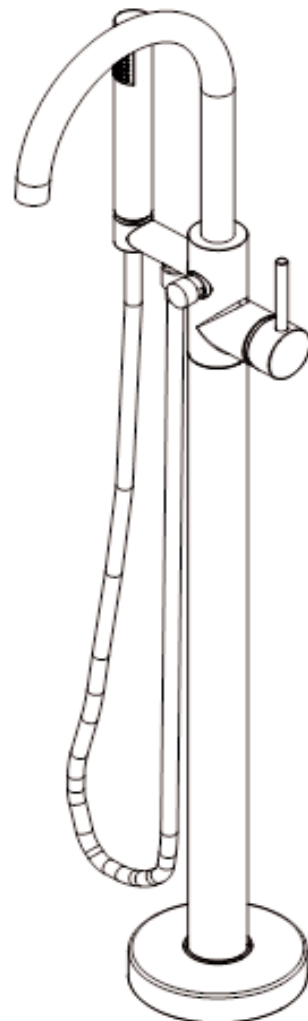


RESTORATION HARDWARE

INSTALLATION INSTRUCTIONS FLOOR-MOUNT TUB FILLS



Model # 23670046
Modern
[RH-6580]



Model # 23670027
Spritz
[RH-5680]

Recommended Installation by a Professional Plumbing Contractor

Important Notes (please read before installing)

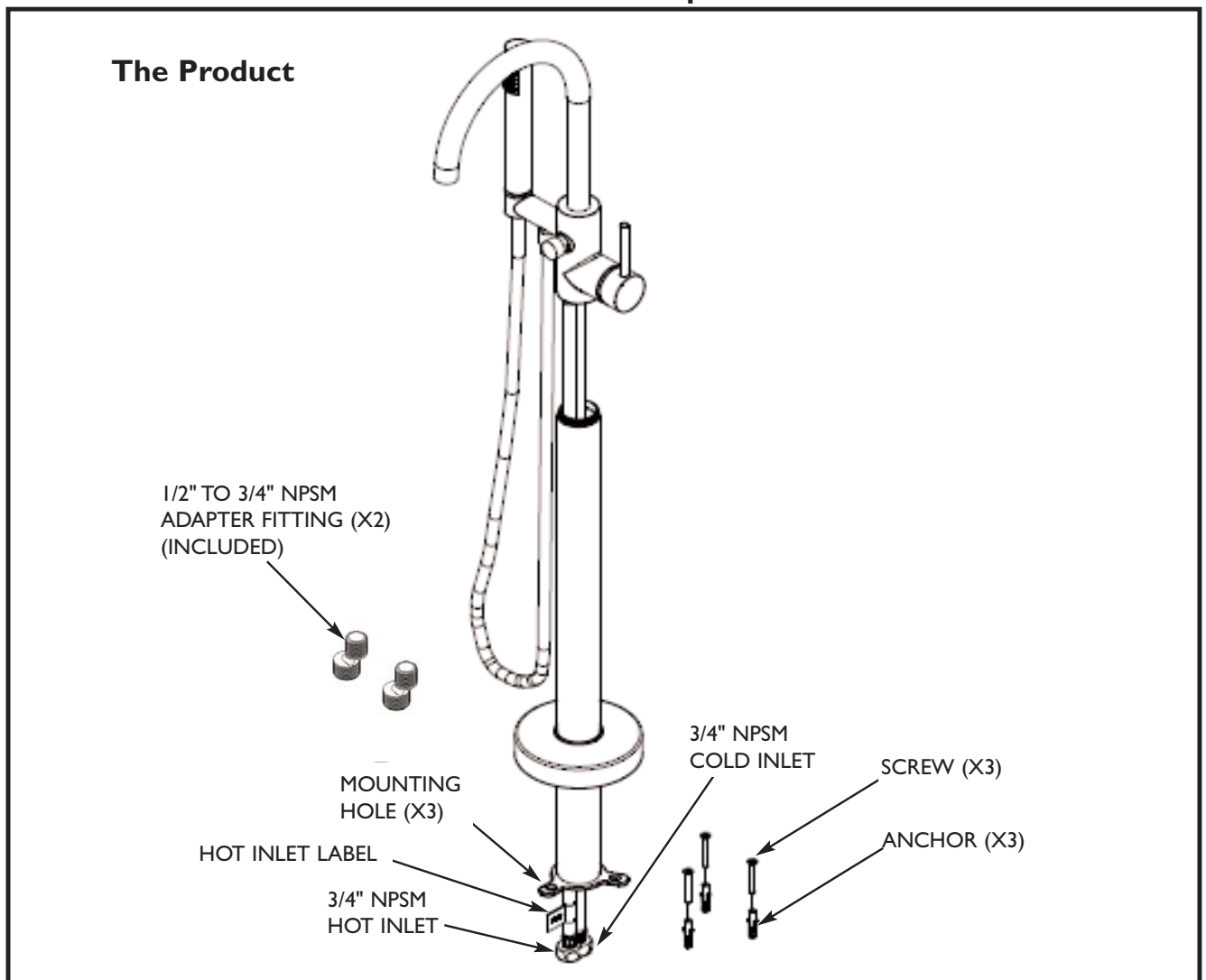
Recommended water pressure: 45 to 80 psi

Product is designed to allow for installation in accordance with all national and local plumbing and building codes.

During floor mounting of this product, extra care should be taken while drilling into the floor to avoid damaging any water supply hoses or copper lines that may exist beneath the floor.

CAUTION: To avoid risk of personal injury, do not use the tub filler as a support bar to enter or exit the bath. **The tub filler is not designed to support weight.**

Pre-Installation Overview: The Product & Site Preparation



Site Preparation

NOTICE: This installation instruction assumes the tub filler is mounted on wood joist support floor surface. For other flooring substrates, such as concrete slab, a suitable cavity must be established within the slab at the installation location, along with an on-site fabricated mounting bridge over the cavity to allow for proper mounting of the product. Additionally, the cavity and mounting bridge should be configured to allow for future access to the plumbed supply connections and to provide space for storing the excess length of hot and cold inlet hoses.

I. Installation Clearances: Figure I illustrates the minimum distance between the tub filler centerline and a finished wall for preventing handle/wall interference. Maximum distance between tub filler base and inside edge of tub is depicted to ensure water fills tub.

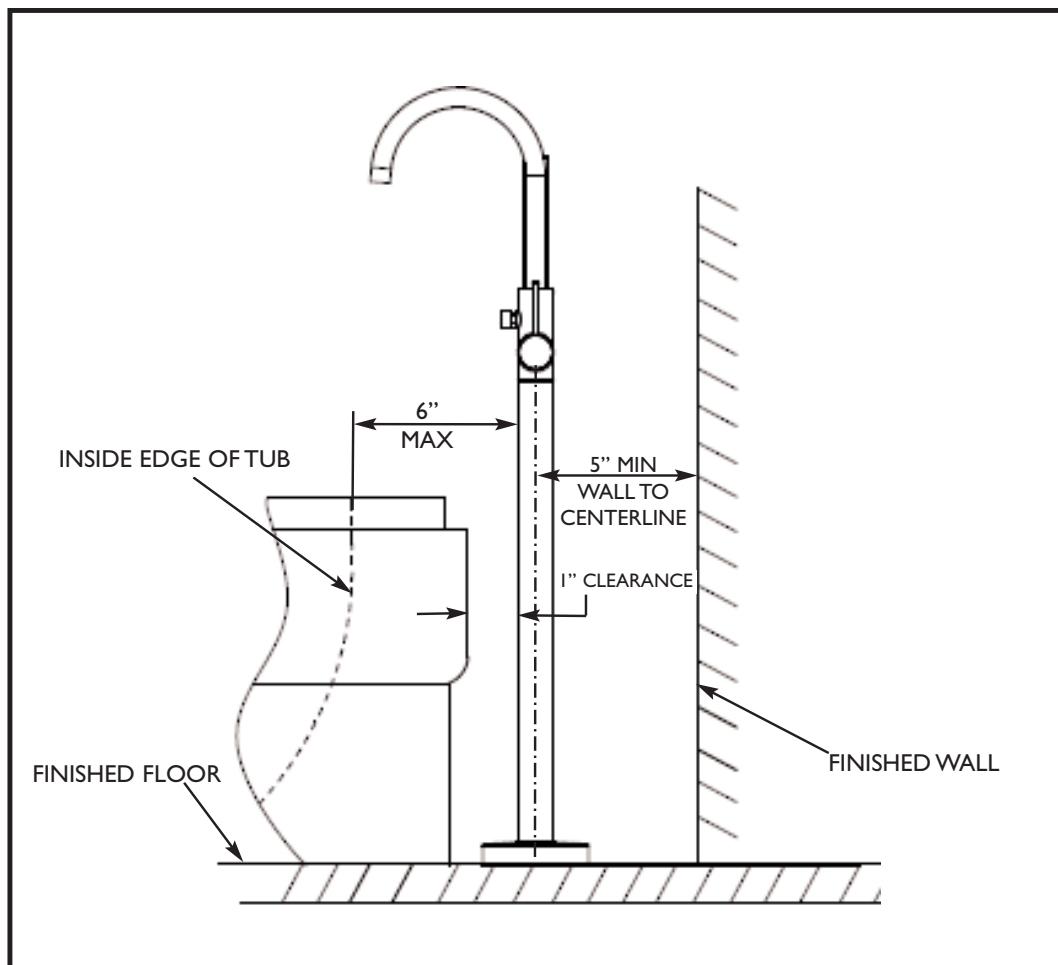


Figure I
Installation Clearances

2. Flooring Substrate / Water Supply Requirements: Figure 2 illustrates the recommended water supply connection and flooring assumptions relative to site preparation.

- a. Diameter of floor opening: 1 7/8" min, 2 1/8" max.
- b. Two FLEXIBLE HOSES (not supplied) are needed to connect water source to tub filler INLETS. The FLEXIBLE HOSE outlets must be installed so as to extend to a minimum of 2 inches above the finished floor.
- c. Tub Filler Inlet Fittings are 1/2 NPSM Female. Use the included ADAPTER FITTINGS (1/2" NPSM to 3/4" NPSM) to connect to the Tub Filler Inlet Fittings if necessary.

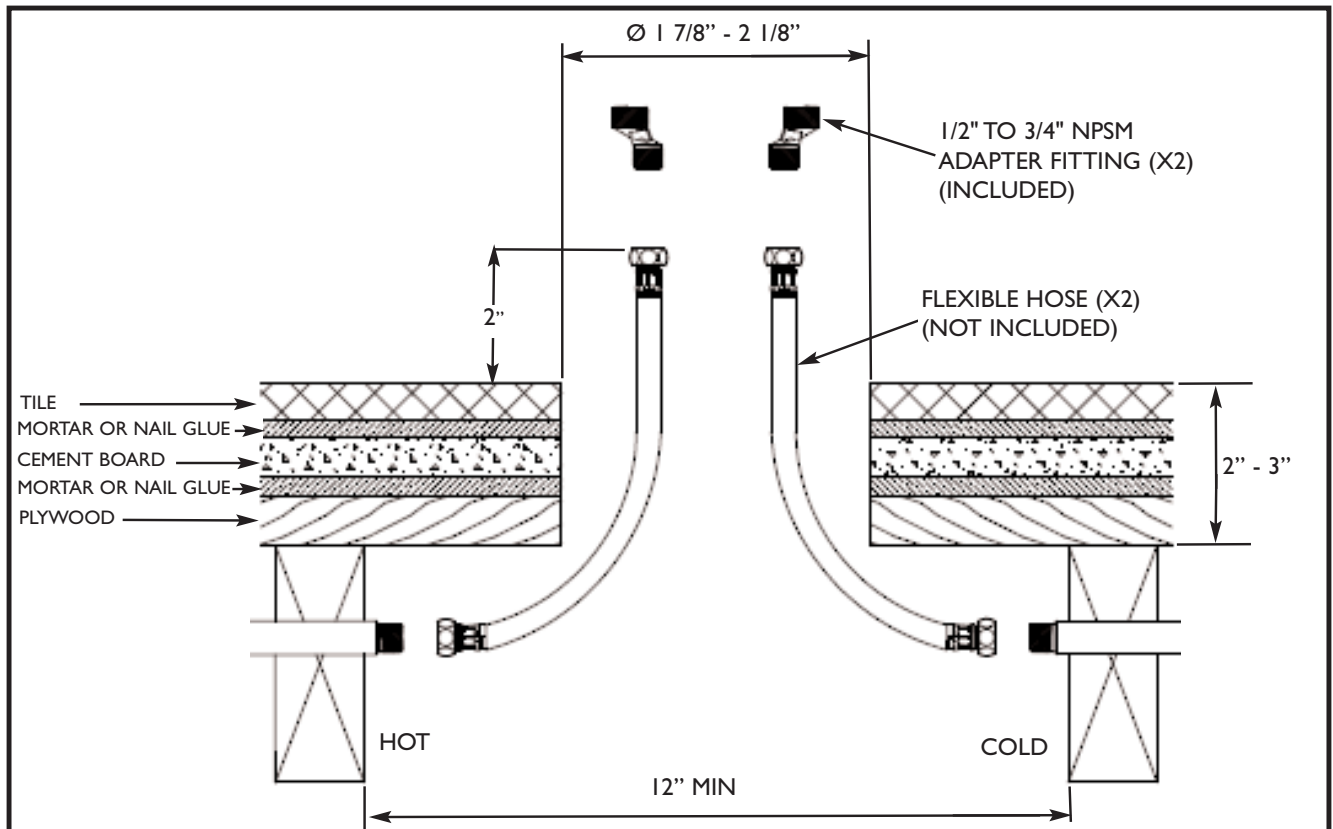


Figure 2
Flooring Substrate / Water Supply Requirements

* Flexible hoses, depicted above, are NOT included.

** Integrity of floor substrate will affect stability of the installed product.

d. Adequate floor support is required. Flooring substrate assumptions:

- i. 2X8 wood joist support
- ii. 3/4" thick minimum plywood
- iii. 1/4" thick minimum cement board
- iv. 1/4" thick minimum tile or hardwood.

Note: Thin-set mortar (or nail glue) is recommended between subfloor layers outlined above.

e. Leak-free connection of the water supply to the Tub Filler INLETS (3/4" NPSM female thread) is the responsibility of the installer.

Installation Instructions

I. Assembling the Tub Filler: Figure 3 illustrates the staggering technique required to thread the two $\frac{3}{4}$ " INLETS of the flexible SUPPLY LINES through the TUBING RISER.

- a. Install FLANGE over the TUBING RISER.
- b. Pass the staggered SUPPLY LINES through the TUBING RISER.

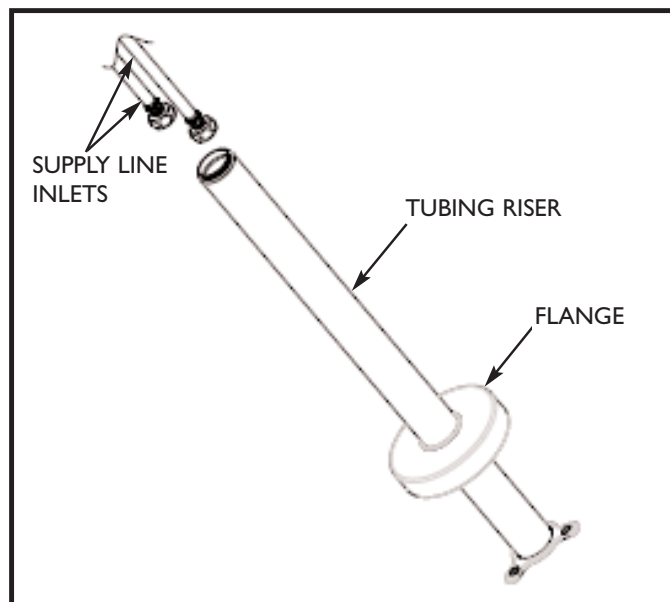


Figure 3

Assembling the Tub Filler

Note: Staggering tub filler inlet fittings will allow them to be threaded through the base.

- c. Attach the Tub Filler MAIN BODY to TUBING RISER.
 - i. With the SUPPLY LINES internal to the TUBING RISER, connect the MAIN BODY to the TUBING RISER as follows depending on Model Number.
 1. Model No. 23670046 (Modern): Rotate the male threads of the TUBING RISER into the female threads of the Tub Filler Main Body until snug.
 2. Model No. 23670027 (Spritz): Insert TUBING RISER into Tub Filler Main Body and secure with set screw located at the base of the MAIN BODY.
- d. Secure the Spout into position by tightening the set screw located at the top of the Tub Filler MAIN BODY.

2. Connecting Tub Filler Inlets to Water Supply: Figure 4 illustrates the connecting of the Tub Filler INLETS to the $\frac{1}{2}$ " to $\frac{3}{4}$ " ADAPTER FITTINGS. Make sure the (hot inlet label) and cold tub filler INLETS connect to the hot and cold of the water supply set-up. The installer is responsible for ensuring a water tight seal.

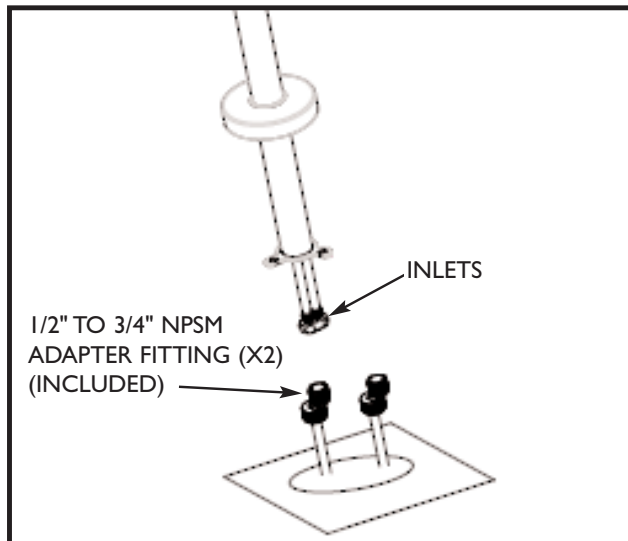


Figure 4

Connecting Tub Filler Inlets to Water Supply.

3. Pressure Test Water Supply Connection

- a. Before attempting to mount the Tub Filler to the floor, Test water connections to ensure water tight seals. The installer is responsible for ensuring a water tight seal. Lay the Tub Filler on the floor and pull the tub filler supply lines above the floor surface to enable leak detection as needed.

4. Securing the Tub Filler to the Floor: Figure 5 illustrates the hardware required to mount the Tub Filler Riser to the floor.

- a. Gently push down and slide all the flexible hose connections through the floor opening.
- b. Position the tub filler above the floor opening and orient the tub filler spout to the desired orientation with respect to the tub.
- c. Rotate the tub filler LEVER HANDLE to verify that the full rotation will not interfere with the bathing fixture or back wall per **Figure I**.
- d. Use a pencil to mark the locations of the three BASE ANCHOR HOLES on the finished floor around the opening in the floor.
- e. Lay the tub filler on the floor and out of the way.
- f. Using a drill and a 5/16" drill bit, drill 3 holes, 2" deep at the marked locations. Warning: Care should be taken to avoid damaging the water supply lines during the drilling process.
- g. Insert PLASTIC ANCHORS into the three 5/16" holes. Tap flush to the floor surface with a hammer as needed.
- h. Position Tub Filler TUBING RISER BASE over the inserted anchors.
- i. Drive SCREWS through the TUBING RISER BASE holes and into the anchors until snug.
- j. Slide FLANGE down to the base of the TUBING RISER until flush with the floor.

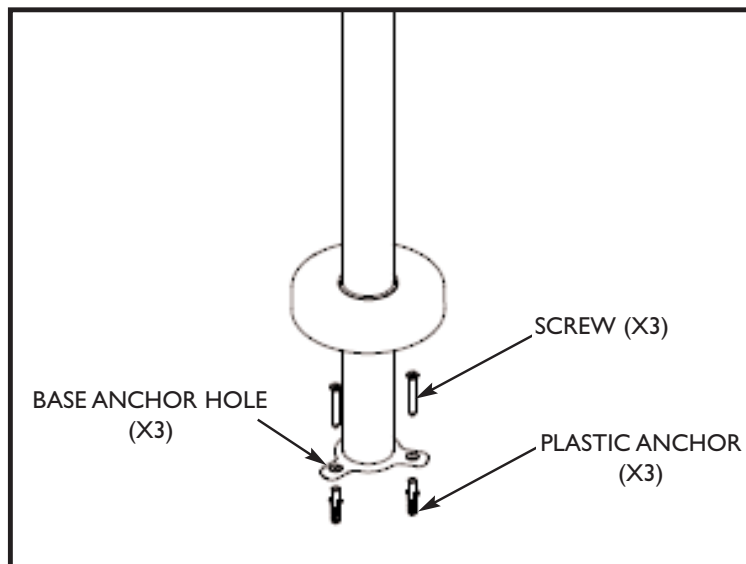


Figure 5
Securing the Tub Filler to the floor.

5. Install the Hose to the Hand Shower and the Tub Filler: Figure 6 (next page) illustrates installing one end of the HOSE to the HAND SHOWER OUTLET located under the HAND SHOWER HOLDER. Attach the other end of the HOSE to the HAND SHOWER until both are secure.

a. Place the HAND SHOWER into the HAND SHOWER HOLDER.

6. Confirm Tub Filler Spout and Hand Shower Functionality

a. Turn Tub Filler Lever Handle to the ON position initiating flow through the Tub Filler Spout.

b. Confirm proper Hot and Cold flow through Spout.

c. Remove the HAND SHOWER from the HOSE and direct towards the bath.

d. Pull out on the DIVERTER KNOB to direct flow from the Spout to the HAND SHOWER.

e. With water now flowing through the HAND SHOWER check all HAND SHOWER HOSE connections for leaks and confirm proper flow through the HAND SHOWER.

f. Turn Tub Filler Lever Handle OFF.

THE INSTALLATION IS NOW COMPLETE.

Contact Technical Support as needed at 1-866-417-5207.

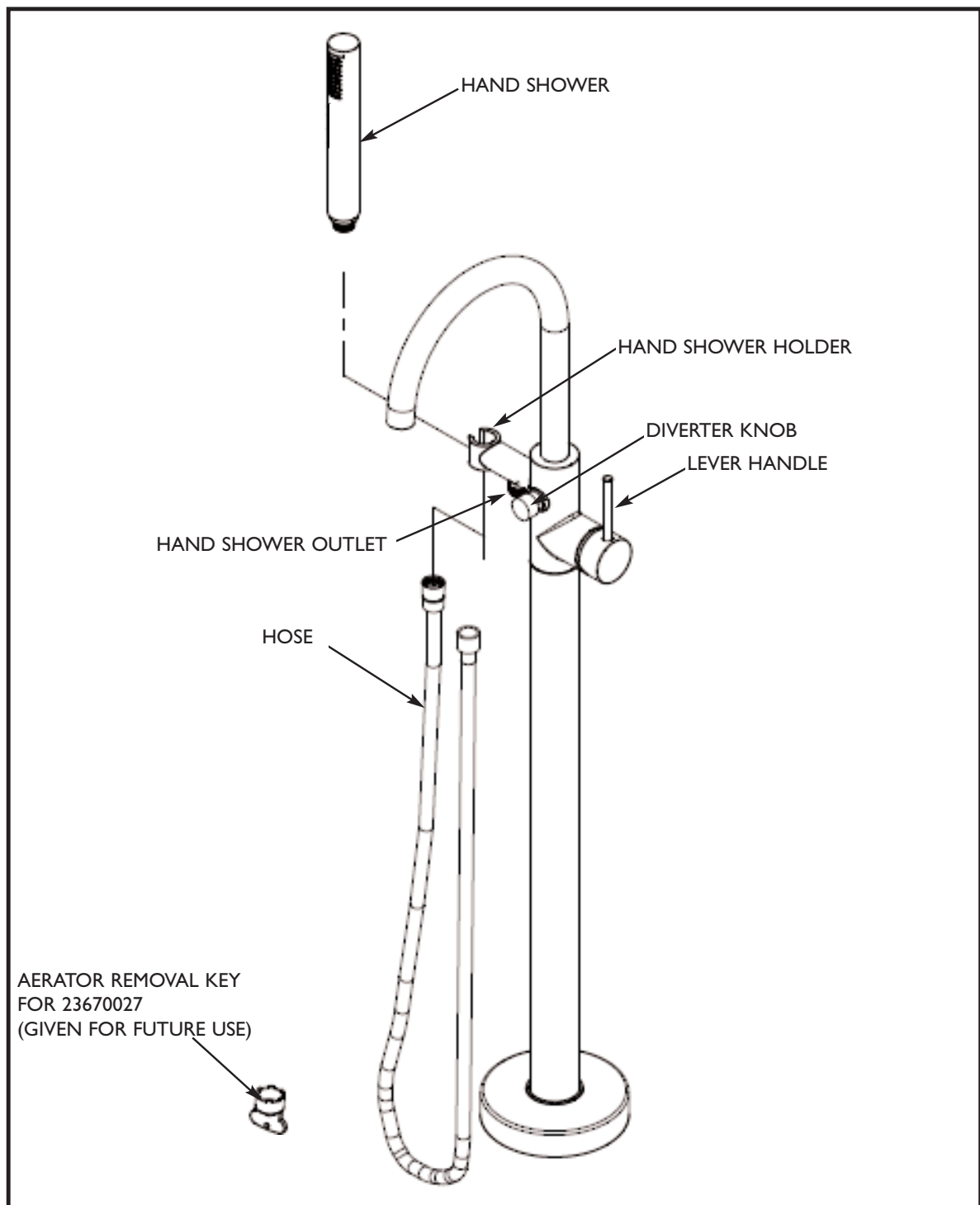


Figure 6
Install the Hose to the Hand Shower and Tub Filler

Care and Cleaning

The lustrous finish on your Restoration Hardware Bathware fixture should be treated with care. Improper handling or cleaning can damage the surface of any metal finish. Use a soft cloth to wipe clean. Avoid harsh abrasive cleaner. Water contains lime and other mineral deposits that will be left on the surface after the water has evaporated. You can prevent these deposits from forming by always wiping the fixture dry immediately after use.

Technical Support and Customer Service

For technical support in the installation of your Restoration Hardware Bathware fixture, please call 1-866-417-5207 weekdays between the hours of 7:00am and 4:00pm PST.

For other questions regarding your order, to order additional components of the Restoration Hardware Bathware Collection, to order replacement parts, or to address warranty issues, please contact Restoration Hardware Customer Service at 1-877-747-4671.