

RESTORATION HARDWARE

BAYONNE DRAPERY WAND ASSEMBLY INSTRUCTIONS

Tools Required For Installation (Not Provided)

No tools are required.

Drapery rings are necessary to secure the wand.

Getting Started

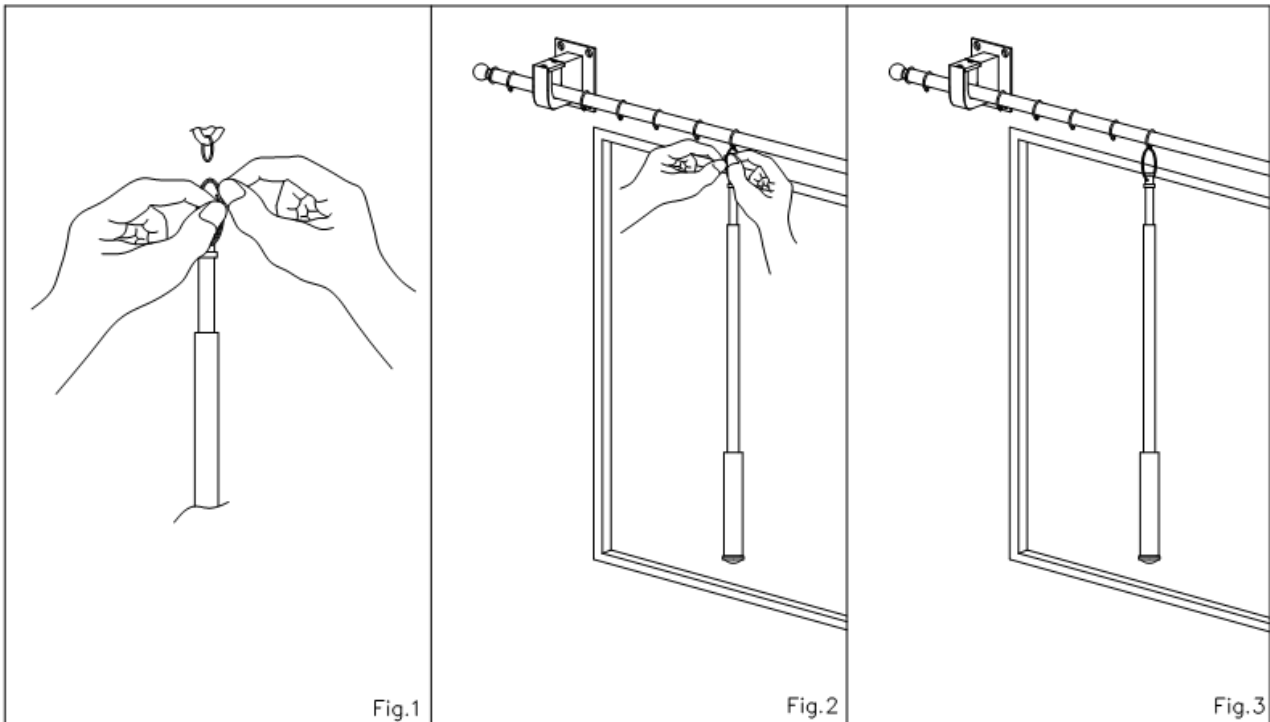
Remove drapery wand from the packaging.

Do not dispose of packaging until the installation has been completed to your satisfaction.

Read through the instructions entirely before starting.

Assembly Instructions

1. The drapery wand attaches to the small loop of a drapery ring in the same manner that a key attaches to a key chain. At the tip of the drapery wand, find the open end of the "key ring" element and using your fingers gently lift the end of the wire. (see Fig.1)
2. Slip the small loop of the ring between the two ply of the wire key ring. (see Fig.2)
3. The drapery wand shares the small loop of the drapery ring with the inner most drapery hook. (see Fig.3)



IMPORTANT: IMPORTANT: It is easier to attach drapery wand to the loop ring prior to placing on window hardware rod.