

RESTORATION HARDWARE

Revised August 19, 2009

FT-143 Provence Fountain (5 pieces)

COMPONENTS AND PARTS LIST

Pump Kit Parts List

PK800 Pump (1)
#10 rubber stopper (1)
Approx 3" length of $\frac{3}{4}$ " clear vinyl tubing (1)
Approx 24" length of $\frac{5}{8}$ " black non-kink tubing (1)
**Tubing will be pre-assembled
Hose clamps (2)
Plumber putty (1)
Wedges (2)

Note – Hose clamps may be used for flow restrictor

FT-143A
12" W x 13"H
46 Lbs



FT-143F
4.5" W x 5.5"H
5 Lbs



FT-143B
10" W x 28"H
150 Lbs



FT-143C
13.5" W x 8"H
58 Lbs



FT-143D
5.75"L x 3.75" W x 5"H
5 Lbs



Fountain holds approximately
30 gallons of water

FT-143E
46" W x 11"H
550 Lbs

PLEASE NOTE: COMPONENTS ARE NOT
SHOWN TO SCALE.

FT-143 Provence Fountain (5 pieces)

Revised August 19, 2009

ASSEMBLY INSTRUCTIONS

Two people are required for the installation of this fountain!

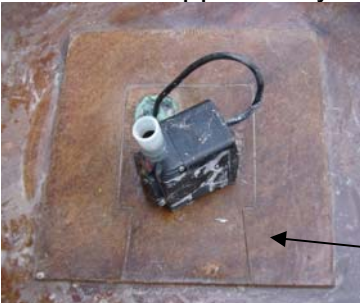
1. Make sure you are assembling your fountain on a level surface.
2. This fountain will need to be installed on a surface capable of holding a minimum of 1064 pounds in a 10.5 square foot area.
3. Thread the pump cord through the hole in the bottom of the basin, leaving enough cord to pull the pump out of the pump cover.
4. Wrap a piece of putty around the cord where you will be placing the stopper.



5. Fit cord into stopper.
6. Place a piece of putty inside the length of the slit in the stopper.



7. Wrap putty around outside of stopper ensuring that the slit and the cord hole are covered and sealed.
8. Press stopper firmly into the hole of basin.



9. Place the pump cover (FT-143C) into the basin where marks indicate, ensuring that it is level.
10. Connect the 3/4" end of the tubing assembly to the pump.



FT-143 Provence Fountain (5 pieces)

Revised August 19, 2009

ASSEMBLY INSTRUCTIONS

Two people are required for the installation of this fountain!

11. Place a hose clamp over the 5/8" end of the tubing assembly and attach to the copper pipe in the bottom of the water feature (FT-143B).



- a. Place the other hose clamp over the tubing prior to assembly if desired for flow restriction.

12. Place the water feature onto the pump cover, ensuring that it is centered and level.
13. Place the pump into the pump cover.
14. Place the Pump Cover Door (FT-143D) into the pump cover window.
15. Place the Water Controller (FT-143F) over the pipe inside the cavity. This will prevent the uneven flow of water from the four spillers.



FT-143 Provence Fountain

(5 pieces)

Revised August 19, 2009

ASSEMBLY INSTRUCTIONS

Two people are required for the installation of this fountain!

16. Place the Cap (FT-143A) on top of the water feature.



17. Fill the basin with approximately 30 gallons of water.

- a. Note – do not allow fountain to run without water as it will cause damage to the pump.

FT-143 Provence Fountain

(5 pieces)

Revised August 19, 2009

WINTER CARE AND GENERAL FOUNTAIN INSTRUCTIONS

- W I N T E R C A R E -

Fountain bowls/tops and other fountain components, which collect water, should not be left outside in the winter since any component, which fills with water and freezes may crack. Likewise components such as pedestals, which remain in a basin, filled with water, which then freezes, may also crack or crumble. Ideally, therefore, a fountain should always be stored indoors or in a dry protected place such as a covered porch away from the elements. However, if a fountain must be left outside:

(1) Remove pump, rubber stoppers, drainpipes, finials, and other small components for storage indoors. Note that stoppers or drainpipes are removed to allow drainage in the event water accumulates in any basin.

(2) Raise fountain base from ground with wood strips so that base will not freeze to the ground surface.

(3) Cover your Campania Fountain with a Campania Fountain Cover, or wrap the fountain with burlap or other absorbent material (old blanket or towel) and then cover securely with plastic, making sure that water will not accumulate in the basin or other fountain component and freeze;

(4) Check fountain periodically to insure that plastic is secure and water is not accumulating in any fountain component.

- G E N E R A L F O U N T A I N T I P S -

Install fountains on a level surface. You will need a properly grounded 110-volt (AC only) GFCI protected receptacle near the fountain for your pump. All pumps are submersible and must be completely underwater to function properly. Test all pumps and adjust to full output prior to assembly. It is not recommended that fountains be placed directly on grass or dirt. Position the channel opening at the base of each fountain toward the electrical outlet to be used since the pump cord will be threaded through this opening