

# RESTORATION HARDWARE

## LIT FRAMED LARGE/SMALL INSET METAL MEDICINE CABINET ASSEMBLY INSTRUCTIONS

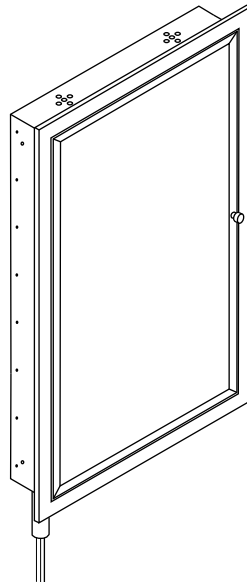
---

### TOOLS AND MATERIALS REQUIRED

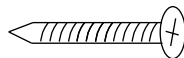
1. Screwdriver
2. Carpenter's level
3. Electrical Tape

### PARTS LIST

A. Cabinet



B. Wood Screw X4



C. Plastic wire connector x3



# RESTORATION HARDWARE

## LIT FRAMED LARGE/SMALL INSET METAL MEDICINE CABINET ASSEMBLY INSTRUCTIONS

### IMPORTANT SAFETY INSTRUCTIONS

WE RECOMMEND INSTALLATION BY A LICENSED ELECTRICIAN.

This fixture has been rated for up to 2-pieces 12V 20-watt maximum T TYPE halogen bulb. To avoid the risk of fire, do not exceed the recommended wattage. When using an electrical furnishing, basic precautions should always be followed, including the following :

Read all instructions before using this furnishing.

**WARNING** - To reduce the risk of burns, fire, electric shock, or injury to person :

1. Close supervision is necessary when this furnishing is used by, or near children, invalids, or disabled persons.
2. Use this furnishing only for its intended use as described in these instructions. Do not use attachments not recommended by the manufacturer.
3. Never operate this furnishing if it has a damaged cord or plug, if it is not working properly, if it has been dropped or damaged, or dropped into water. Return the furnishing to a licensed electrician for examination and repair.
4. Keep the cord away from heated surfaces.
5. Never operate the furnishing with the air openings blocked. Keep the air openings free of lint, hair, and the like.
6. Never drop or insert any object into opening.
7. Do not use outdoors.
8. Do not operate where aerosol (spray) products are being used or where oxygen is being administered.
9. Save these instructions for the future reference.
10. **WARNING: Risk of Electric Shock** - Connect this furnishing to a properly grounded outlet only.

See Grounding Instructions.

### GROUNDING INSTRUCTIONS

This product must be connected to a grounded metal, permanent wiring system or an equipment-grounding conductor. It must be run with the circuit conductors and connected to the equipment-grounding terminal or lead on the product.

### ASSEMBLY INSTRUCTIONS

1. Carefully remove all parts from the box.
2. Measure a space for the cabinet body (A). Blocking is recommended to ensure adequate support. Inset (recessed) box measurements will vary according cabinet model (See Below).

#### Large size dimensions

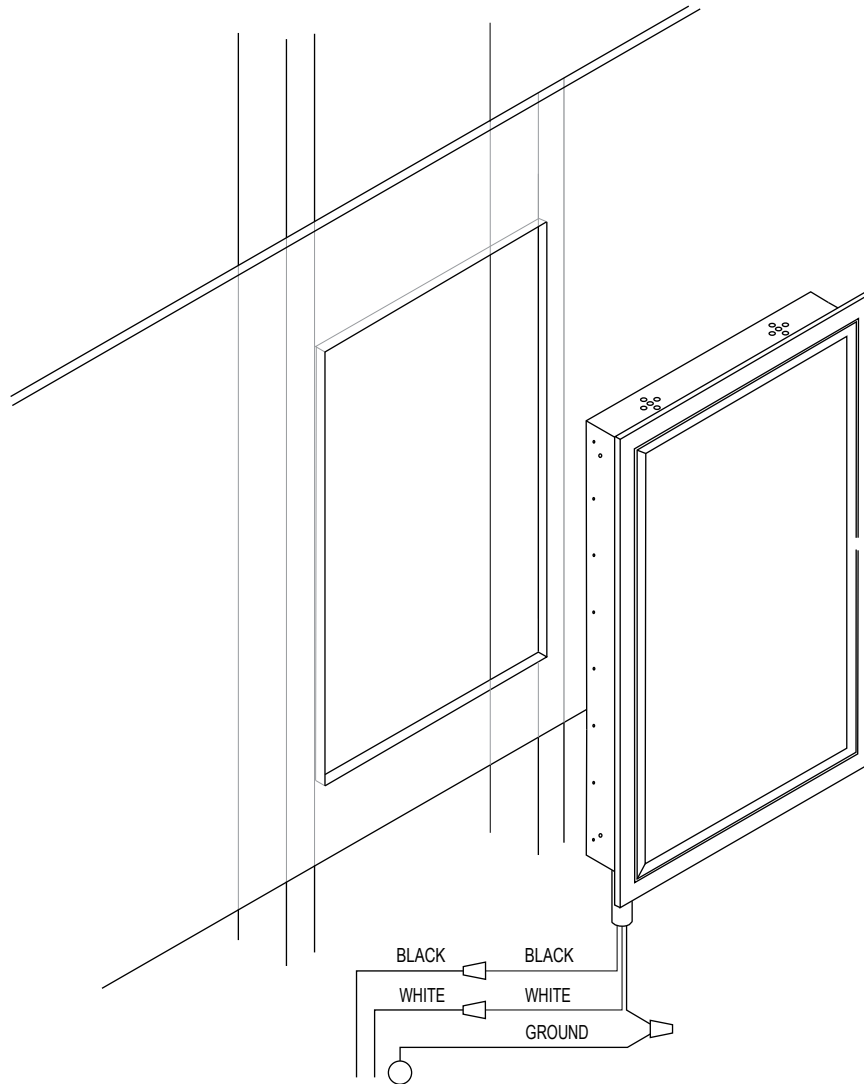
19" wide  
31 3/4" high  
3 3/4" deep

#### Small size dimensions

14 " wide  
24 " high  
3 3/4" deep

# RESTORATION HARDWARE

## LIT FRAMED LARGE/SMALL INSET METAL MEDICINE CABINET ASSEMBLY INSTRUCTIONS

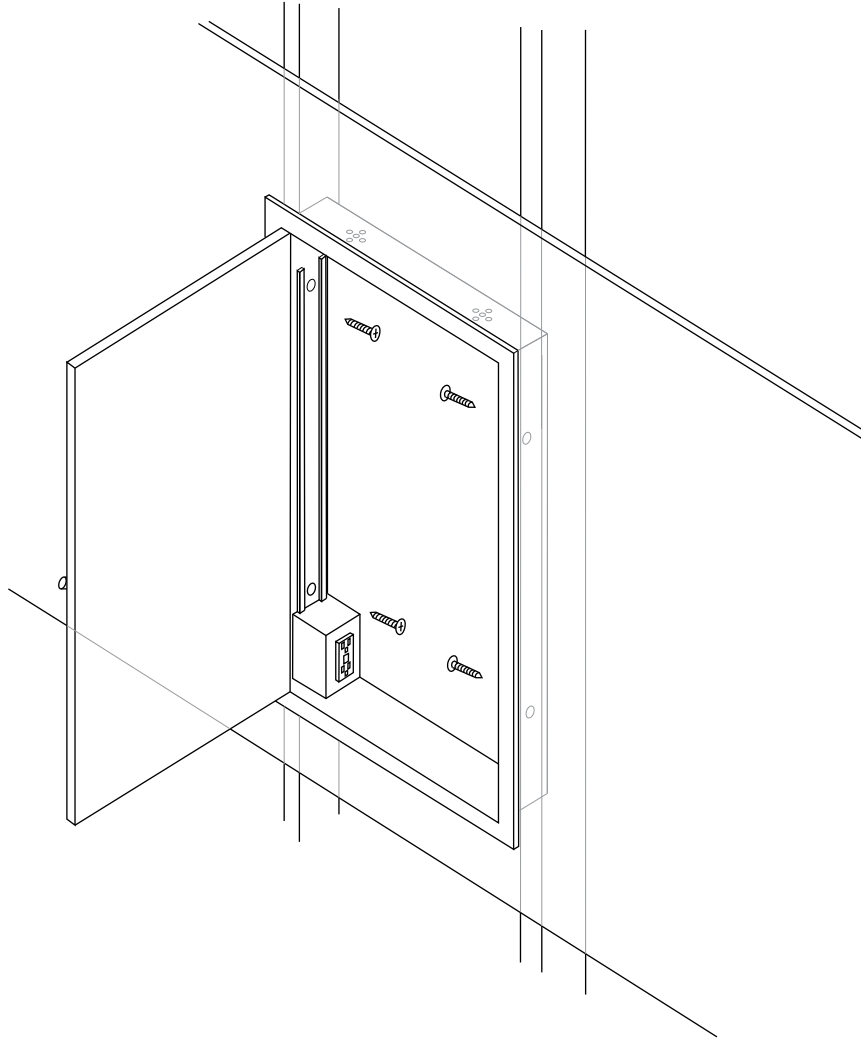


3. Turn OFF power to the junction box where the lamp will be installed.
4. Pull the electrical cord from "J BOX" through the exit hole.
5. Attach the ground wire from the fixture to the ground junction box wire from the outlet box (usually green) with a plastic wire connector (C) and wrap the connection with electrical tape.
6. Connect the hot wire to the hot junction box wire (usually black) with a plastic wire connector. (C) and wrap the connection with electrical tape. Connect the neutral wire to the neutral junction box wire (usually white) with a plastic wire connector (C) and wrap the connection with electrical tape.
- 7 . Install the cabinet with recessed box set back within the wall cavity.

# RESTORATION HARDWARE

## LIT FRAMED LARGE/SMALL INSET METAL MEDICINE CABINET ASSEMBLY INSTRUCTIONS

8. Mount cabinet by fastening the enclosed wood screws (B) in the inner side panels. Enclosed wood screws are to be used for installation into wood frames. For different wall material type, additional screws/anchors may need to be purchased. (See Below)



9. Restore power to the junction box and test lamp fixture. When the lit cabinet is wired and power to the cabinet is first turned ON, press the RESET button on the GFCI receptacle to fully activate the GFCI protection circuit and power up the receptacle.
10. Installation is complete.

### CAUTION

All wires are connected. When unpacking, be careful not to pull wires as a bad connection may result. Do not connect electricity until your lit cabinet is fully assembled. Keep flammable materials away from lit bulb.

# RESTORATION HARDWARE

## LIT FRAMED LARGE/SMALL INSET METAL MEDICINE CABINET ASSEMBLY INSTRUCTIONS

### HOW TO REPLACE HALOGEN BULB

#### Warning :

To reduce the risk of fire, electrical shock, or personal injury, always turn off lamp and allow it to cool prior to replacing light bulb. Do not touch bulb when fixture is turned on or look directly at lit bulb.

#### Procedure :

1. Remove the lit lens using a flat head screwdriver. (Fig 1)
2. Pull out the lit bulb carefully.
3. Insert the pins of lit bulb into the socket firmly. (Fig 2)
4. Put the lit lens back on base using a flat head screwdriver. (Fig 3)

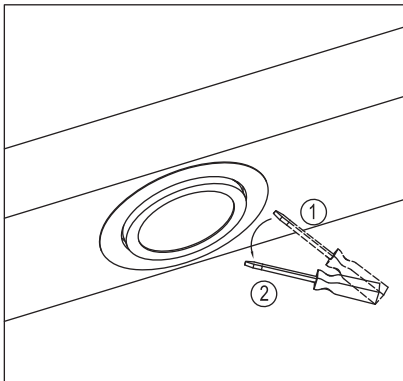


Fig 1

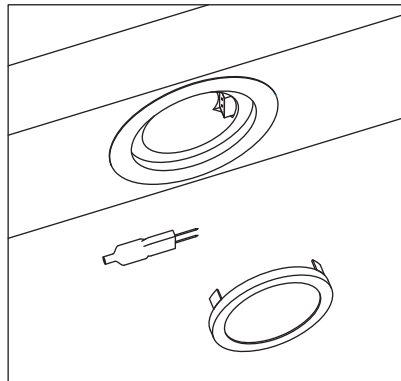


Fig 2

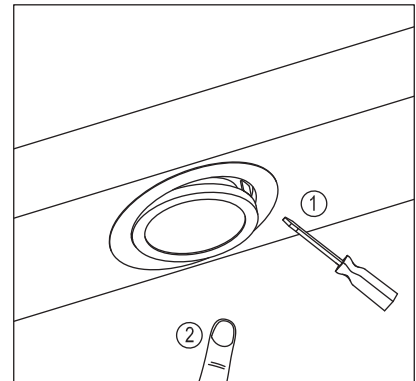


Fig 3

### WARNING

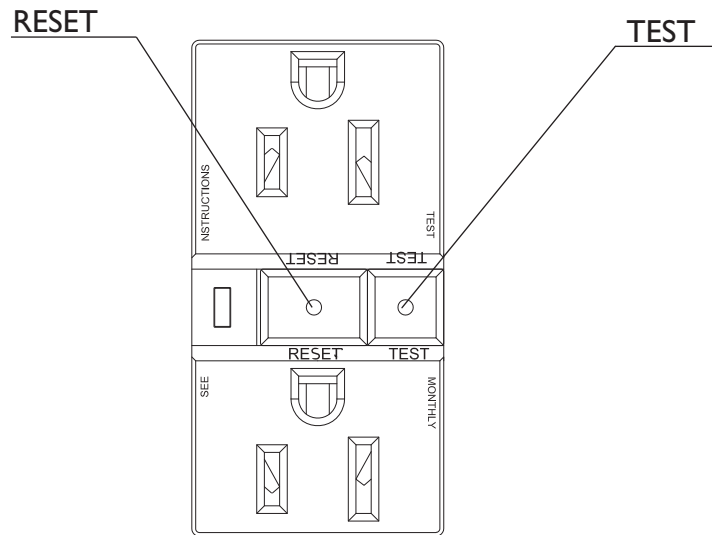
An electrical lit cabinet must be wired to a 15 Amp GFCI (Ground Fault Circuit Interrupter) circuit breaker when used in bathrooms and all other locations required by the National Electric Code.

# RESTORATION HARDWARE

## LIT FRAMED LARGE/SMALL INSET METAL MEDICINE CABINET ASSEMBLY INSTRUCTIONS

### GFCI CIRCUIT BREAKER FUNCTION TEST PROCEDURE

1. Press the TEST button in order to trip the device. This should stop the flow of electricity.
2. To restore power, press the RESET button fully, to verify that the power is ON.
3. Press the TEST button (then RESET button) every month to assure proper operation.



### CLEANING INSTRUCTIONS

To maintain and protect the luster of all products, clean with a soft, damp cloth only.