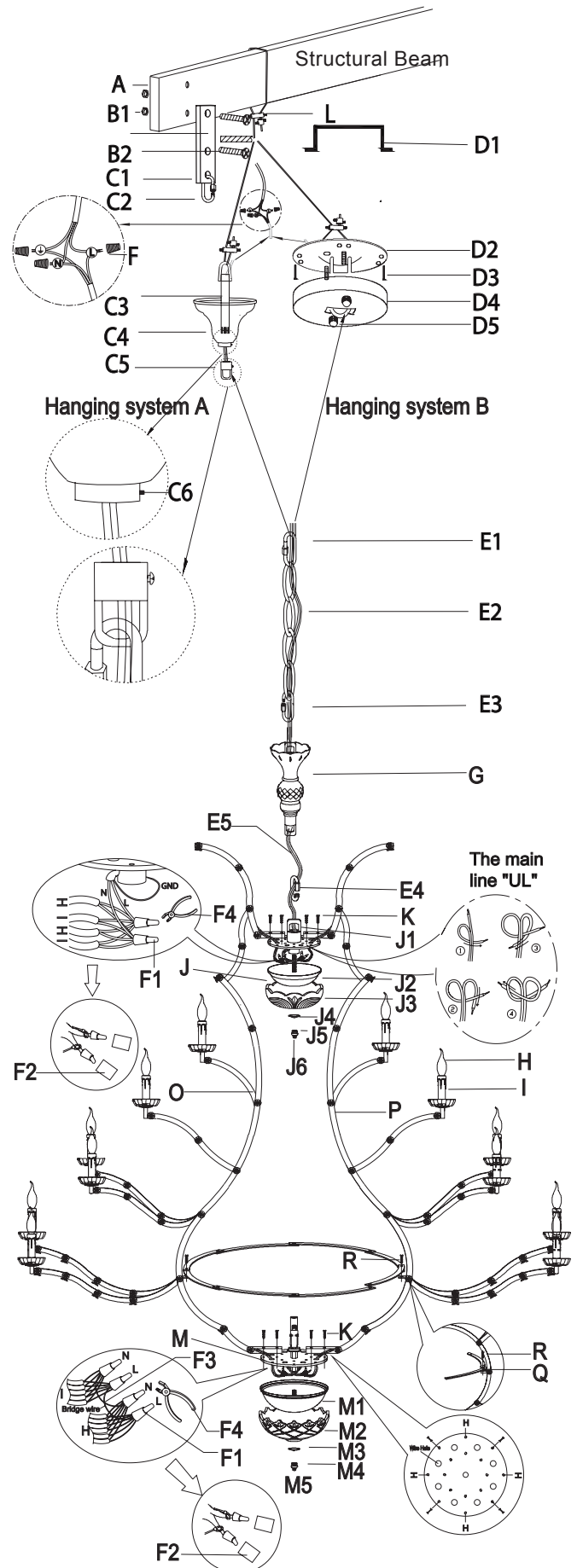


PARTS ENCLOSED

- (A) Wooden Beam (not included)
- (B1) Mounting Nuts (2; not included)
- (B2) Mounting Bolts (2; not included)
- (C1) Mounting Hardware (1)
- (C2) 6mm Quick Link (1)
- (C3) Collar (1)
- (C4) Canopy A (1)
- (C5) Hang Straight (1)
- (C6) Bolt (1)
- (D1) Junction Box, 22.7kg/50lbs. MIN. FIXTURE RATED (not included)
- (D2) Ceiling Plate (1)
- (D3) Mounting Screws (4; not included)
- (D4) Canopy B (1)
- (D5) Bolt Nuts (2)
- (E1) 6mm Quick Link (1)
- (E2) 6mm Chain (1)
- (E3) 6mm Quick Link (1)
- (E4) 6mm Quick Link (1)
- (F1) Wire Nuts + Spares (12)
- (F2) Heat Shrinkable Sleeves + Spares (12)
- (F3) Bridge Wires (4)
- (F4) Pliers (1; not included)
- (G) Glass Bottle (1)
- (H) Bulbs + Spares (49+16)
- (I) Candle Sleeves (49)
- (J) Body A (1)
- (J1) Hang Straight (1)
- (J2) Round Housing (1)
- (J3) Glass Bowl (1)
- (J4) Round Lid (1)
- (J5) Nut (1)
- (J6) Metal Part (1)
- (K) Bolts + Spare (32)
- (M) Body B (1)
- (M1) Round Housing (1)
- (M2) Glass Bowl (1)
- (M3) Round Lid (1)
- (M4) Nut (1)
- (M5) Metal Part (1)
- (O) Metal Arm A (4; with a wire from bottom to top)
- (P) Metal Arm B (4)
- (Q) Curve Metal Bar (8)
- (R) Bolts + Spares (8)

PRODUCT DESCRIPTION

General material: Chinese Crystal & Iron
 Height: 74.01in (188.0cm)
 Diameter: 59.06in (150.0cm)
 Weight: 114.64lbs (52.0kg)
 Grounded / Hardwired



PROFESSIONAL INSTALLATION REQUIRED**IMPORTANT SAFETY INSTRUCTIONS**

1. Use an authorized and certified electrician for consultation and installation.
2. This fixture has been rated for forty-nine (49) 25-watt maximum E12 bulbs.
3. To avoid the risk of fire, do not exceed the recommended wattage.
4. The ceiling must have at least the capacity of 5 times the weight of the ceiling light. For this light, at least a ceiling capacity of 573.19lbs (260kg) is required.
5. The manufacturer and distributor accept no liability for incorrect installation.
6. For indoor use only.
7. Keep away from children.

WARNINGS

1. Turn off electricity supply at main circuit panel before installing. Do not connect electricity supply until your light is fully assembled and installed.
2. All wires are connected. Do not remove the ceiling light from its packaging by pulling on the power cord, as a bad connection may result.
3. To reduce the risk of fire, electrical shock, or personal injury, always turn off the ceiling light and allow it to cool prior to replacing lightbulbs. Do not touch bulbs when fixture is turned on or look directly at lightbulbs. Keep flammable materials away from lightbulb.
4. Deviation from instructions may result in a risk of fire or electric shock.
- 5.

THIS PRODUCT IS NOT A TOY AND HAS NO PLAY VALUE.

ASSEMBLY & INSTRUCTIONS

1. Carefully remove all parts from the box and remove all plastic covering.
2. Turn OFF power to junction box where the ceiling light will be installed.
3. Loosen metal part (M5) and detach nut (M4), round lid (M3), glass bowl (M2) and round housing (M1) from body B (M). Loosen metal part (J6) and detach nut (J5), round lid (J4), glass bowl (J3) and round housing (J2) from body A (J).
4. Insert the branch wire of arm (O) and arm (P) to body B (M) and body A (J) through the wire holes on the metal plate. Please note the rank of the two arms is arm (O)-arm (P)-arm (O)-arm (P).
5. Fix arm (O) and arm (P) to body A (J) and body B (M) with bolts (K).
6. Connect the branch live/neutral to live/neutral cord of main wire (E5) the main line "UL" wire nut (F1) by pliers (F4) and wrap the connection with heat shrinkable sleeve (F3). Insert main wire (E5) through hang straight (J1) to body A (J).
7. Fasten curve metal bar (Q) to arm (O) or arm (P) with bolts (R).
8. Re-attach the round housing (J2), glass bowl (J3) and round lid (J4), nut (J5) to body A (J) and fasten metal part (J6) to body A (J).

ASSEMBLY & INSTRUCTIONS CONT.

9. Re-attach the round housing (M1), glass bowl (M2) and round lid (M3), nut (M4) to body B (M) and fasten metal part (M5) to body B (M).
10. Attach quick link (E4) to the hang straight (J1) on body A (J).
11. The implementation of hanging system depends on whether the ceiling is vaulted or level.
 - 3.1. Hanging system A is for level ceiling, which include ceiling plate A (C1), canopy A (C2), collar (C4), and hang straight (C5). Loosen the bolt of hang straight (C3) and remove the collar (C4) from the hang straight (C5) by unscrewing it. Then insert collar (C4) into canopy A (C2) and re-attach collar (C4) to hang straight (C5). Tighten the bolt (C6) of the hang straight (C5).
 - 3.2. Hanging system B is for sloped ceiling, which include ceiling plate B (D1), canopy B (D2), and bolt nut (D3). Loosen the bolt nut (D3) of canopy (D2) and remove the ceiling plate B (D1) from the canopy.
12. Unlock the quick link (E3) on the opposite end of the chain (E2) and attach to the hang straight (H) on the glass bottle (M).
13. Unlock the quick link (E4) on the opposite end of the glass bottle (M) and attach to the hang straight (L) on body (I).
14. Attach the ceiling plate (C1 or D1) to the ceiling with mounting screws (B).
15. Hanging system A: Attach the end of the collar (C4) to the ceiling plate (C2). Unlock the quick link at the top of the chain to attach the ceiling plate A.
16. Connect the ground wire from the fixture to the ground junction box wire (A) (usually the green or bare wire) and wrap the connection with electrical tape. Connect the hot wire to the hot junction box wire (A) (usually black or smooth) with a plastic wire nut (F1) and wrap the connection with electrical tape. Connect the neutral wire to the neutral junction box wire (A) (usually white or ribbed) with a plastic wire nut (F1) and wrap the connection with electrical tape.
17. Move the canopy (C1 or D1) up to the ceiling, then fasten the bolt (C3) or bolt nut (D3).
18. Position glass dishes (25) and candle sleeves (I), and hang the crystals as per drawing on left.
19. Fasten lightbulbs (H) to the lampholders.
20. Restore power to the junction box and test ceiling light fixture.

CARE INSTRUCTIONS

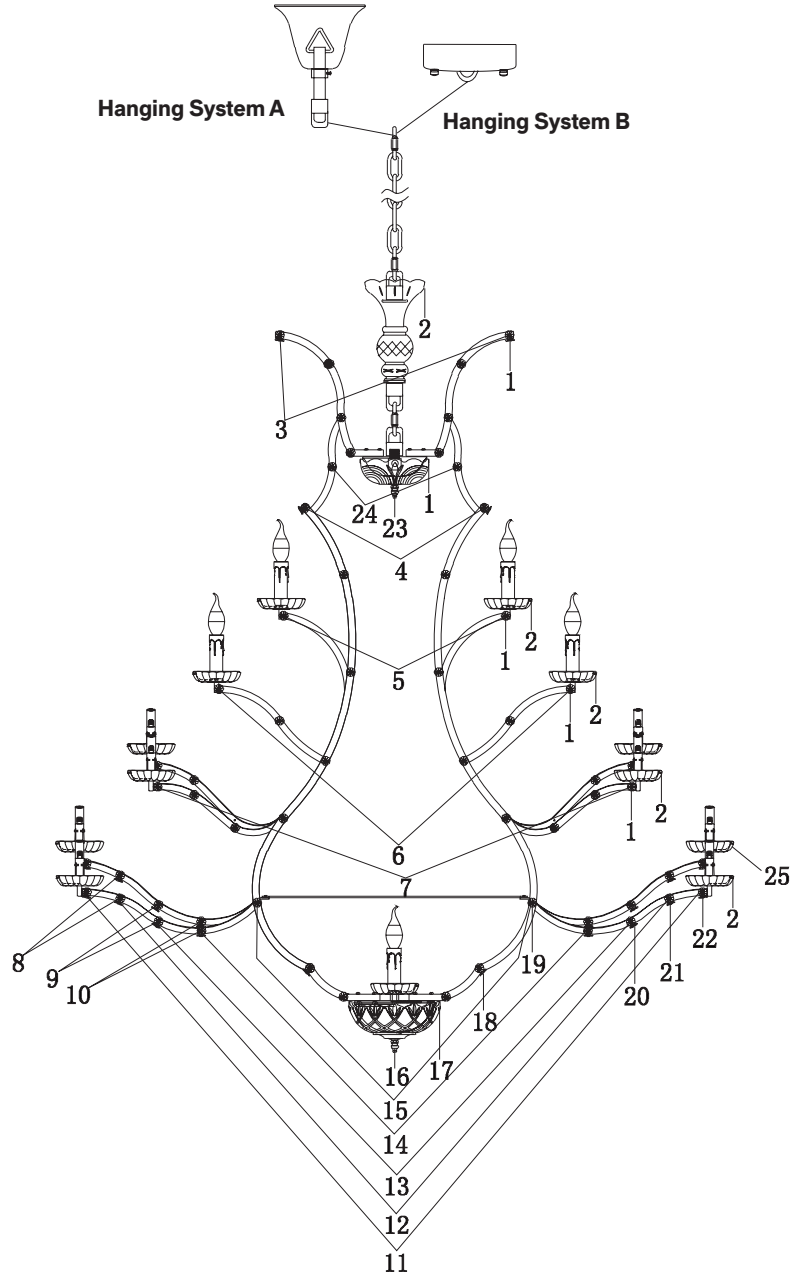
1. Make sure that power is turned off and bulbs have cooled before handling.
2. Wipe clean with a dry cloth / mild soapy solution. Do not use corrosive cleaners.
3. The cable / cord of this ceiling light cannot be replaced; if the cable is damaged, do not use the light.

ENVIRONMENT

Special waste handling may be required. Please contact your local authorities for more information.

RH

19TH C. ROCOCO IRON & CRYSTAL ROUND CHANDELIER 60"



1 14mm*2PCS 63*43 48PCS	2 14mm*1PCS 50*38 198PCS	3 14mm*13PCS 73*61 8PCS	4 14mm*11PCS 63*43 8PCS	5 14mm*11PCS 63*43 8PCS	6 14mm*17PCS 63*43 8PCS	7 14mm*16PCS 73*61 16PCS	8 14mm*17PCS 73*61 8PCS	
9 14mm*16PCS 73*61 8PCS	10 14mm*11PCS 73*61 8PCS	11 14mm*16PCS 73*61 16PCS	12 14mm*19PCS 73*61 8PCS	13 14mm*17PCS 73*61 8PCS	14 14mm*19PCS 73*61 8PCS	15 14mm*27PCS 73*61 8PCS	16 14mm*9PCS 60# 1PCS	
17 14mm*9PCS 73*61 8PCS	18 14mm*11PCS 73*61 8PCS	19 14mm*13PCS 73*61 8PCS	20 14mm*4PCS 73*61 16PCS	21 14mm*3PCS 73*61 16PCS	22 14mm*2PCS 73*61 16PCS	23 14mm*4PCS 40# 1PCS	24 14mm*9PCS 8PCS	25 #104#E22 48PCS

CEILING SAFETY CABLE ASSEMBLY

1. Remove the nut locker A & B by loosening the set screw from the ceiling safety cable before installation.
2. Insert the ceiling safety cable through the nut lockers as the drawing shows.
3. Fasten the nut locker A with set screw by small allen key.
4. Fasten the nut locker B with set screw by small allen key.

