

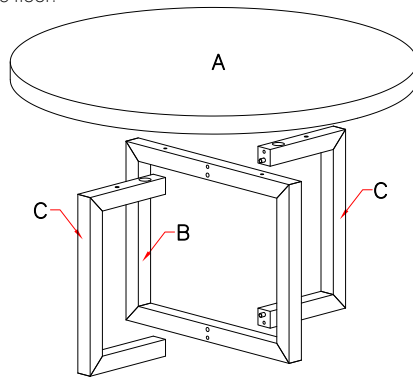
HESTON ROUND DINING TABLE INSTRUCTIONS

⚠ WARNING

- Use product on carpet or apply optional felt pads to help protect floors.
- Do not pull or push product across the floor.

PARTS INCLUDED

- A [1] TOP
 B [1] BASE #1
 C [2] BASE #2

**ASSEMBLY INSTRUCTIONS**

1. Place Base #1 (B) upright on a non-abrasive flat surface.
2. Secure the threaded rod (1) to the fixed nut in the base by simply turning it manually. Refer to FIGURE 1.
3. Raise one section of Base #2 (C) and place the rod (1) to align with the holes on the end of the base (C). Position the section of Base #2 (C) against Base #1 (B) so the threaded rods (1) go through the holes. Insert the curved washer (2) and lock washer (3) and place hex nuts (4) on threaded rod (1) as illustrated in FIGURE 2. Tighten the hex nuts (4) with the wrench (5).
4. Repeat the above procedure with the other section of Base #2 (C) to attach it to Base #1 (B).

HARDWARE INCLUDED

NO.	ITEM	DESCRIPTION	QTY.
1		Threaded rod	4 pcs.
2		Curved washer	4 pcs.
3		Lock washer	8 pcs.
4		Hex nut	4 pcs.
5		Wrench	1 pc.
6		Allen bolt	4 pcs.
7		Flat washer	4 pcs.
8		Allen wrench	1 pc.
9		Felt pad	4 pcs.

FIGURE 1

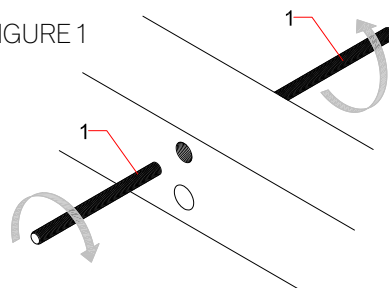
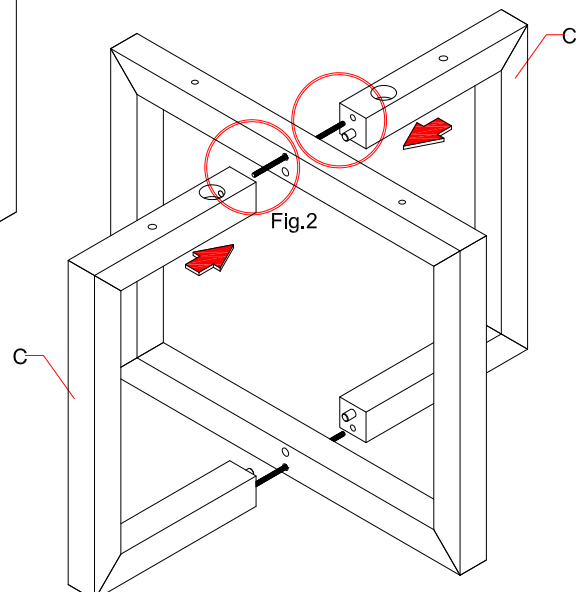
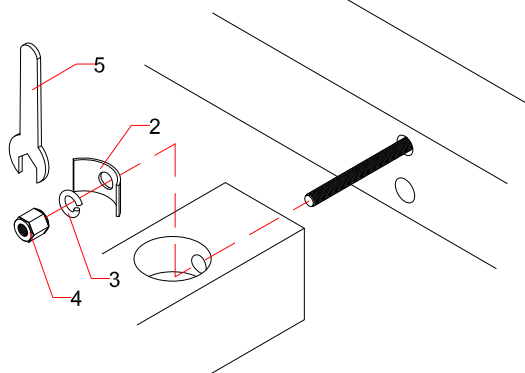


FIGURE 2



HESTON ROUND DINING TABLE INSTRUCTIONS

5. Set the assembled base upside down on a flat, non-abrasive surface. Insert the curved washer (2) and lock washer (3) and place hex nuts (4) on threaded rod (1). Tighten the hex nuts (4) with the wrench (5), as illustrated in FIGURE 3.
6. Set the tabletop (A) upside down on a flat, non-abrasive surface. Set the assembled base on top, aligning the holes on the table base with the fixed nuts on the tabletop. Insert the Allen bolts (6) together with lock washers (3) and flat washers (7). Tighten with the Allen wrench. See FIGURE 4. DO NOT OVER TIGHTEN.
7. Turn the table upright. Check the furniture leveling; if necessary, adjust the levelers on the bottom of the legs, as shown in FIGURE 5.
8. Apply glue on the felt pads (9) and stick them underneath the levelers. See FIGURE 5.
9. Assembly is complete.

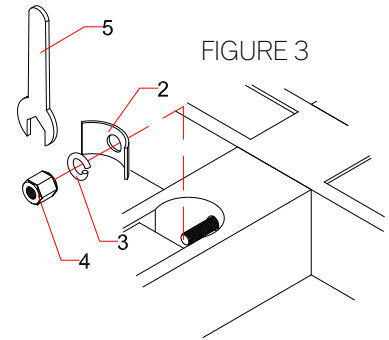


FIGURE 3

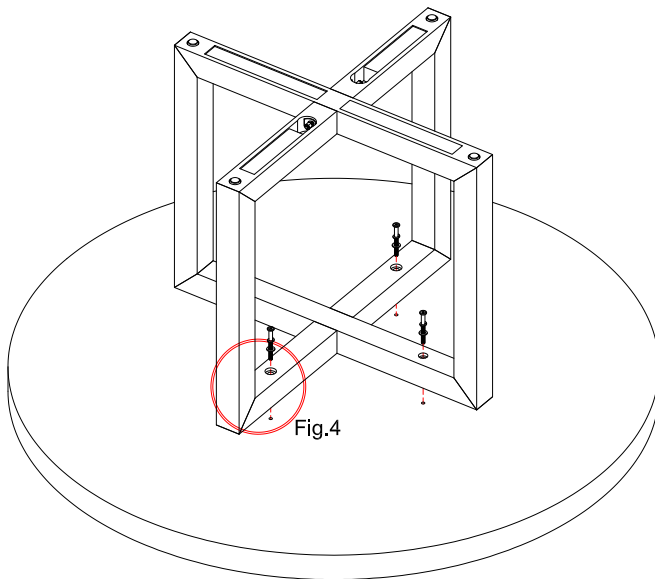


Fig.4

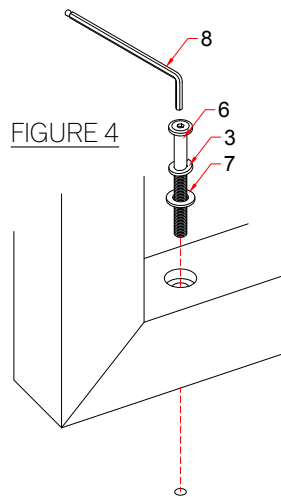


FIGURE 4

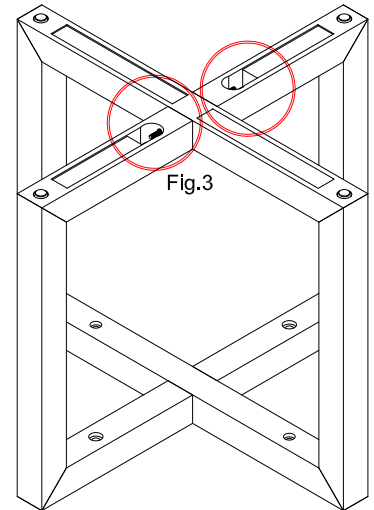
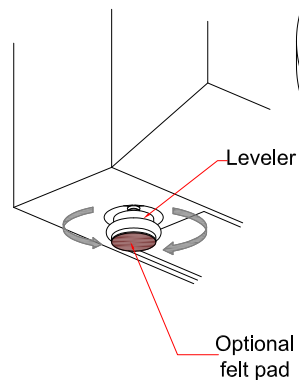


Fig.3

FIGURE 5



Leveler

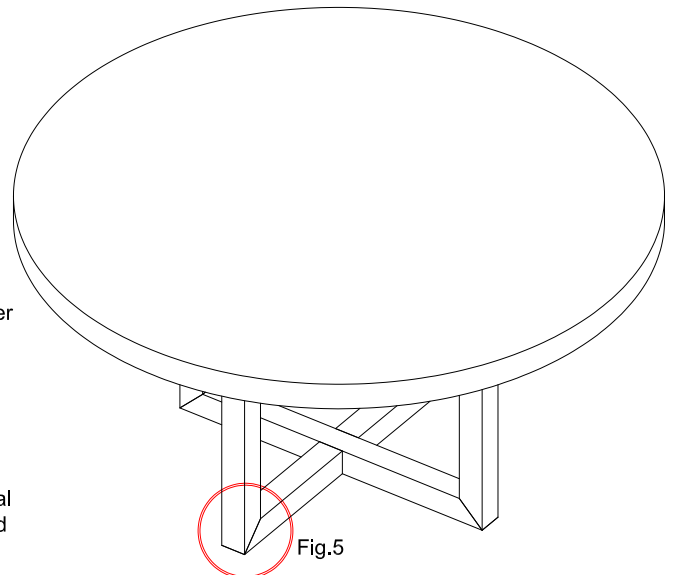
Optional
felt pad

Fig.5

CARE INSTRUCTIONS

1. Dust often using a clean, soft, dry and lint-free cloth.
2. Blot spills immediately and wipe with a clean, damp cloth.
3. We do not recommend the use of chemical cleansers, abrasives or furniture polish on our lacquered finish.

IMPORTANT SAFETY INSTRUCTIONS

1. Please read all instructions carefully before assembling.
2. For your safety, assembly by two or more adults is strongly recommended.
3. Keep these instructions for future use.
4. Use only vendor-supplied hardware to assemble. Using unauthorized hardware could jeopardize the structural integrity of the item.