

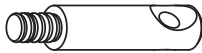



CLOUD MODULAR LEFT-CORNER CONSOLE TABLE INSTRUCTIONS

PARTS INCLUDED

A [1] CONSOLE TABLE-A

B [1] CONSOLE TABLE-B

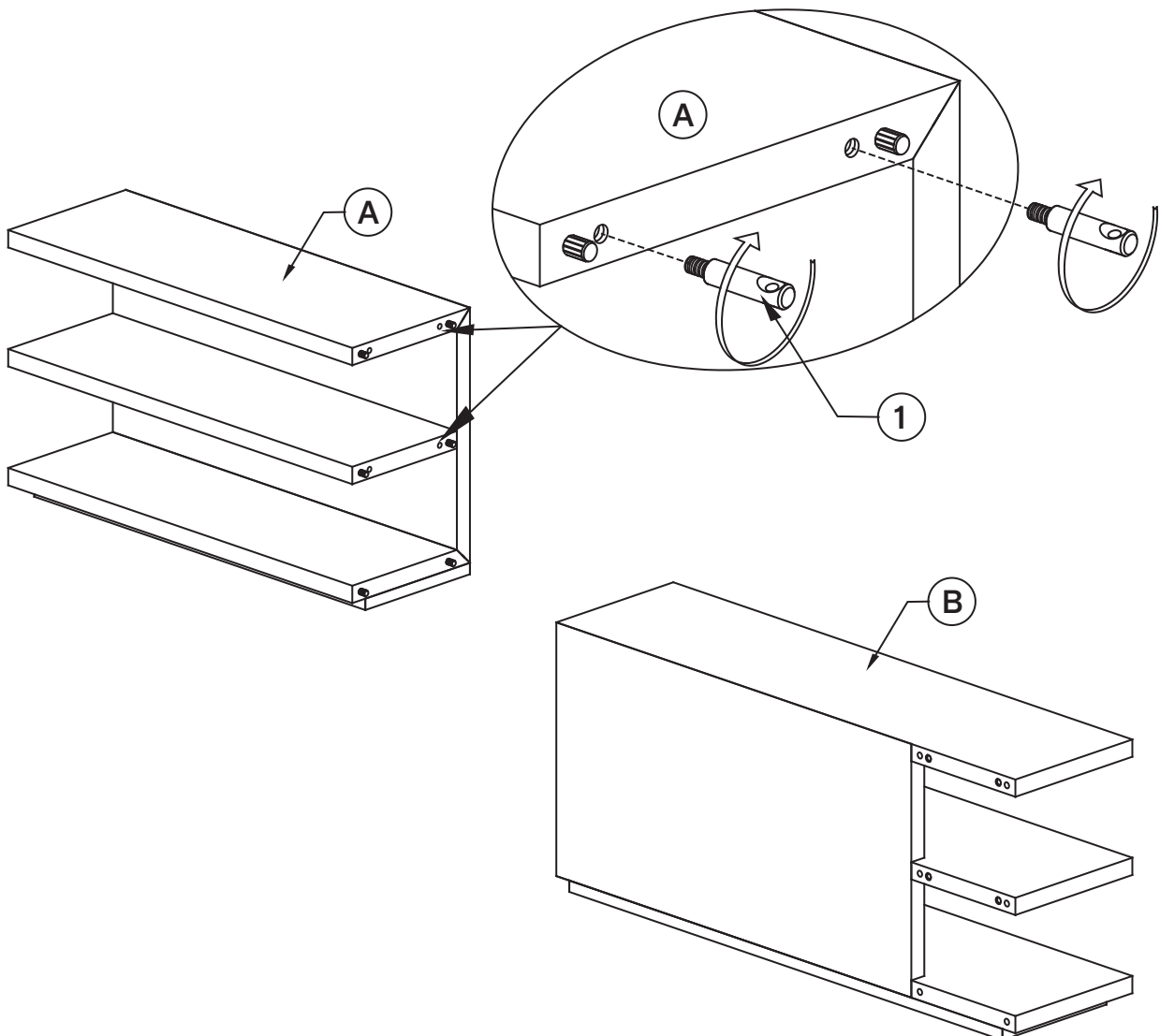
HARDWARE INCLUDED

NO.	ITEM	DESCRIPTION	QTY.
1		Connecting bolt	4 pcs.
2		Assembling insert	4 pcs.
3		Camlock wheel	4 pcs.
4		Allen key	1 pc.

ASSEMBLY INSTRUCTIONS

STEP 1:

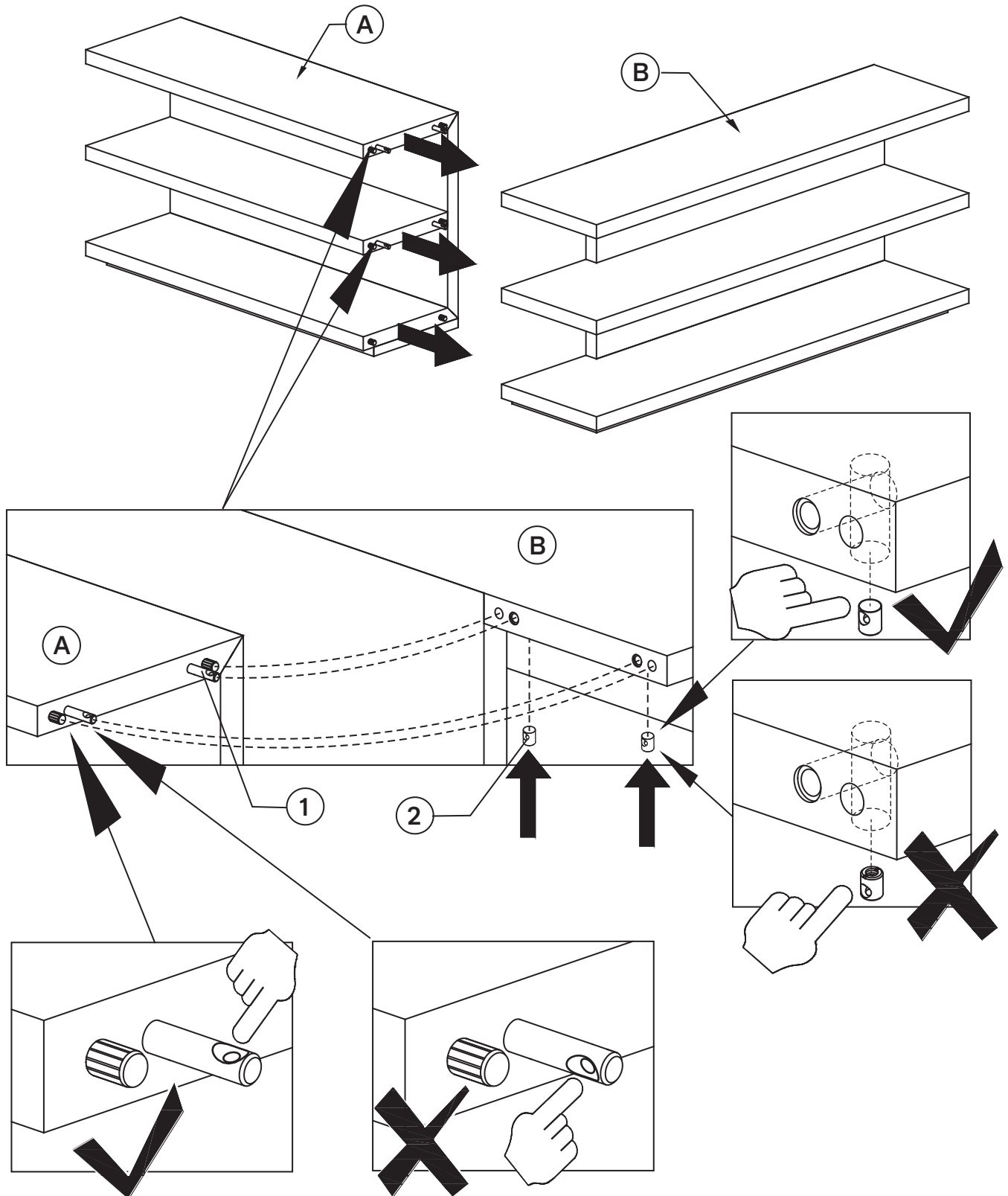
Insert the connecting bolts (1) into the pre-drilled holes in Console Table-A (A).



CLOUD MODULAR LEFT-CORNER CONSOLE TABLE INSTRUCTIONS

STEP 2:

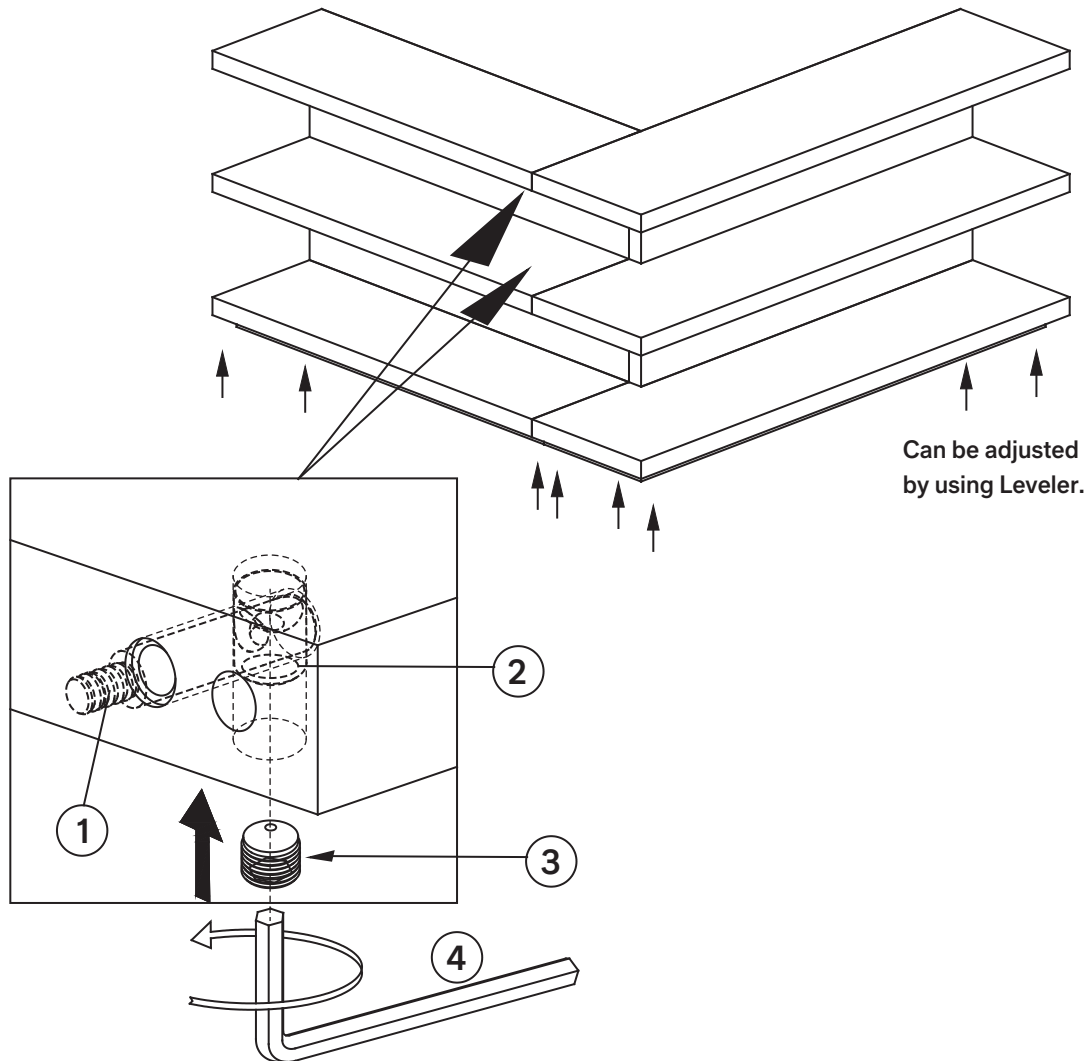
Secure Console Table-A (A) to the back of Console Table-B (B). Place assembling insert (2) into the pre-drilled holes in the back of Console Table-B (B) by aligning the hole of the assembling insert (2) to the connecting bolt (1).



CLOUD MODULAR LEFT-CORNER CONSOLE TABLE INSTRUCTIONS

STEP 3:

Insert camlock wheel (3) into assembling insert (2) and twist in counterclockwise direction to tighten using the Allen key (4).
Adjust levelers as needed.



CARE INSTRUCTIONS

- Dust often using a clean, soft, dry lint-free cloth
- Blot spills immediately and wipe with a clean, damp cloth.
- We do not recommend the use of chemical cleansers, abrasives or furniture polish.