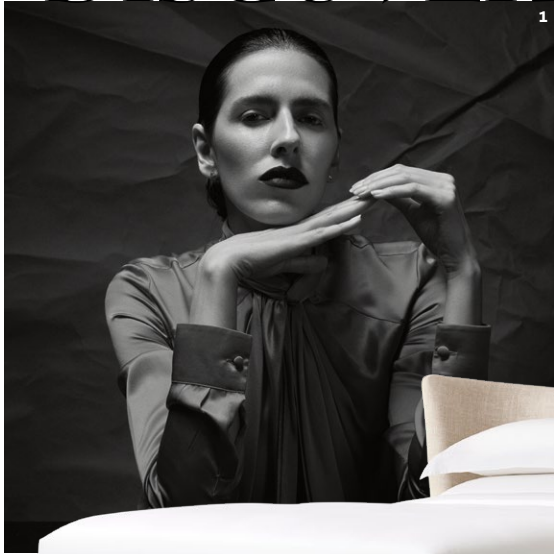




AD100

LEGENDS ONLY
introducing the 2024 AD100

DISCOVERIES



1. JULIANA LIMA VASCONCELLOS. 2-3. HER NEW LARA BED AND LOUNGE CHAIR FOR RH CONTEMPORARY.



2

DEBUT

Wish Fulfillment

For *Juliana Lima Vasconcellos*, a first collection with RH marks a dream come true



3

Concepts often come to Juliana Lima Vasconcellos in a dream state. “I first see a piece in my head,” explains the celebrated Brazilian-born designer, now based between Belo Horizonte, São Paulo, and London. “Sometimes I’ll spend hours before falling asleep just modifying an idea.

By the time I start to sketch, it’s already done.” Recently, her imagination settled on a new goal: her first collaboration with an American brand. Enter RH, the trendsetting furnishings brand, who contacted her out of the blue to team up on a collection. (How’s that for manifesting?) Building on her signature language of curves, the new Lara series for RH Contemporary spans both dining and lounge chairs, with upholstered bodies and backs that nod to midcentury modernism. “The inspiration for my work is always bold, but this collection is also feminine and futuristic,” she reflects. In addition to seating, there’s an equally sculptural bed, its rounded headboard a plush approximation of a good-night hug. “I want people to feel really embraced,” she notes. In other words: Sleep tight and dream big. *rh.com* —SAM COCHRAN

KNOCK ON WOOD

RH Contemporary showcases the timeless majesty of timber in three new hit collections



MARKED BY THEIR V-SHAPE BASES AND THICK PLANKS WITH AMERICAN WHITE OAK VENEERS, THE **CORVO** OCCASIONAL TABLES ARE BOLD STUDIES IN GEOMETRY AND CRAFT.



DESIGN DUO THOMAS BINA AND RONALD SASSON CHanneled BRAZILIAN MODERNISM IN THE REFINED WALNUT FORMS OF THE **SANTIAGO** CASEGOODS SERIES.



VENEERED IN AMERICAN WALNUT, THE **Gael** LINE BY VIRGINIA-BASED DESIGNER JULIE LAWRENCE ENLIVENS SIMPLE SILHOUETTES WITH SUBTLE CURVES AND BEVELED EDGES.

PORTRAIT: SERGIO DE REZENDE. ALL OTHERS: COURTESY OF RH.