

# MODERN LUXURY PALM BEACH

Georgina  
Bloomberg  
Stylish in the Saddle

*CHAMPION  
STYLE*

Fashion's Athletic Mood

*PB WELLNESS*  
With New Year Beauty Mantras

*RIDING HIGH*  
Polo Season Begins



Catching Up With Tom Samet,  
Mark Bellissimo, Elle Macpherson  
& Salvatore Ferragamo



**DESIGN & REALTY**

**59 SPOTLIGHT** Luxury condominium VistaBlue Singer Island is gearing up to debut.

**61 BUZZ** Award-winning interior designer Gil Walsh opens a new office and showroom in the heart of Antique Row in West Palm Beach.

**62 TRENDS** Dress your interiors in artful decor from floor to ceiling.

**63 OBSESSIONS** RH, Restoration Hardware Chairman and CEO Gary Friedman discusses his new flagship store and restaurant in West Palm Beach.

**TRAVEL & RECREATION**

**79 SPOTLIGHT** The Broadmoor in Colorado rings in its centennial with celebrations galore.

**80 WEEKENDER** Palm Beachers travel from town to town in the lap of luxury with NetJets.

**81 JET SET** Home to an award-winning resort, a naturalist's haven and adrenaline-inducing excursions, New Zealand's North Island is well worth the trek across the globe.

**83 RIDES** Porsche pushes boundaries with the 2019 Cayenne Turbo.

61



**84 WELLNESS** Travel the world, all while meeting your health and wellness goals, with Escape to Shape.

**FOOD & DRINK**

**87 SPOTLIGHT** Café Boulud executive chef Rick Mace shares some of the food inspirations from his recent trip to Japan.

**88 SPIRITS** Legendary cognacs are making an impact in Palm Beach.

**89 BITES** Sant Ambroeu's executive chef, Marco Barbisotti, shares his Milanese influence in a warmer climate.

**90 GUIDE** Your go-to guide for navigating Palm Beach's dining scene; the top five salads to carry you into a health-conscious new year; and more.

**SOCIAL SCENE**

**97 SNAPSHOTS** Your invite into Palm Beach's most exclusive events

**LOOK WHO'S TALKING**

**100** Jose Gonzalez, beloved general manager at Bice Palm Beach, shares why it continues to remain an island favorite.

GIL WALSH INTERIORS PHOTO BY SARGENT ARCHITECTURAL PHOTOGRAPHY

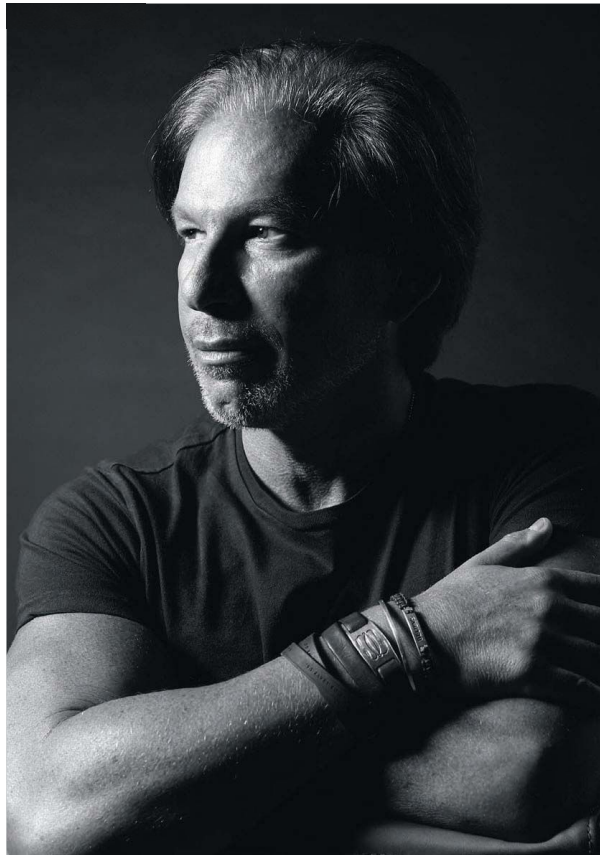
DESIGN & REALTY  
obsessions



Geode quartz crystal chandelier, from \$2,495



RH Interiors bedroom on level 1 at RH West Palm



Machinist Glass Cloche pendant, \$596, by Jonathan Browning



RETNA Mural Installation at the eastern facade of RH West Palm



Brutalist Cubist buffet lamp, \$446



PORTRAIT BY IAN HANSON FOR RH

# Sense of PLACE

Call it Palm Beach by way of Miami Art Week. Gary Friedman, the chairman and chief executive officer of RH, Restoration Hardware, looked to points south when he came up with the concept for RH West Palm. "We wanted to build something extraordinary in Palm Beach that would be reflective of the beautiful historic oceanfront estates and glamour of Worth Avenue, but with a contemporary edge and spirit of Art Basel Miami," he explains. And, yet, Friedman made sure that the venue is utterly of its place and time: "To me, Palm Beach has always been about a sense of glamour and luxury, a place everyone aspires to be a part of. We're all intrigued to know what's behind the majestic gates, behind the lush green hedges that surround the beautiful estates." The four-level design destination, which wears its design bona fides on its sleeve, has just the collections to fill those estates, courtesy of its RH Design Atelier, in addition to multiple designated showrooms for RH Interiors, RH Modern and RH Outdoor Furniture, plus galleries for teens and kids and a rooftop restaurant with views of Palm Beach all around. 560 Okeechobee Blvd, rh.com —Drew Limsky



Wyeth split bamboo floating coffee table, \$3,146, by John Birch