

PERFORMANCE LINEN WEAVE 92% POLYESTER, 8% LINEN

**1. General Care & Cleaning Tips**

- These fabrics adhere to the Association of Contract Textiles (ACT) cleaning code "W." This designation recommends spot cleaning only with water-based cleaners such as the RH Upholstery Fabric Cleaning kit.
- Vacuum every 1-2 weeks with a proper upholstery attachment to thoroughly remove air-borne dust and lint. Even though dust might not be visible, your sofa does collect dust.
- Promptly treat spots and stains. See spot cleaning instructions below.

2. Spot Cleaning Method**Required Supplies**

- Two white cloths (such as a dishcloth or dish towel)
- Approved cleaner
 - RH Upholstery Performance Fabric Cleaning Kit
 - or-
 - Simple soap-and-water solution (1/4 tsp mild, enzyme detergent, such as Tide®, Woolite® or Dawn® dishwashing liquid, mixed with 1 cup of lukewarm water in a clean spray bottle)

Spot Cleaning Steps

1. Before spot cleaning, blot up liquids on the surface with a clean white cloth. For thicker substances use a spoon to scoop up any excess.
2. Apply 3 sprays of approved cleaner (see above) to a clean white cloth and work from the outside of the stain inward using alternating clockwise and counterclockwise motions so as not to spread the stain.
3. Rinse thoroughly by applying 3 sprays of water on a new clean white cloth and blot to remove all soap residue. Repeat steps 2 and 3 as needed. **Because soap attracts dirt, it's essential to remove any cleaner residue to avoid future buildup. To ensure all residue is removed, consider at-home extraction (see below).**
4. Allow fabric to air dry.

3. Hot Water Extraction Method - Cleaning for Overall Refresh + Tougher Stains**Professional Extraction Cleaning Option**

We recommend working with a local professional in your area for an overall cleaning of upholstery (especially if you have light colored fabrics). The same companies that clean rugs and carpets also clean upholstered furniture, for example Stanley Steamer. These companies have professional-grade hot water extraction machines that provide the best results.

At-Home Extraction Option

If you are using an at-home upholstery cleaner, we recommend using the portable Bissell Little Green® suction attachment without a brush and following the steps below:

1. Before extraction cleaning, ensure all spots or spills have been cleaned by following the spot cleaning method above.
2. Follow directions on filling your Bissell Green machine, filling only with water.
3. Place the nozzle on the upholstery and slowly and evenly suction the entire surface to prevent water marks during drying.
4. Allow fabric to air dry.

PERFORMANCE BOUCLÉ 100% POLYESTER

**1. General Care & Cleaning Tips**

- These fabrics adhere to the Association of Contract Textiles (ACT) cleaning code "W." This designation recommends spot cleaning only with water-based cleaners such as the RH Upholstery Fabric Cleaning cleaning kit.
- Vacuum every 1-2 weeks with a proper upholstery attachment to thoroughly remove air-borne dust and lint. Even though dust might not be visible, your sofa does collect dust.
- Promptly treat spots and stains. See spot cleaning instructions below.

2. Spot Cleaning Method**Required Supplies**

- Two white cloths (such as a dishcloth or dish towel)
- Approved cleaner
 - RH Upholstery Performance Fabric Cleaning Kit
 - or-
 - Simple soap-and-water solution (1/4 tsp mild, enzyme detergent, such as Tide®, Woolite® or Dawn® dishwashing liquid, mixed with 1 cup of lukewarm water in a clean spray bottle)

Spot Cleaning Steps

1. Before spot cleaning, blot up liquids on the surface with a clean white cloth. For thicker substances use a spoon to scoop up any excess.
2. Apply 3 sprays of approved cleaner (see above) to a clean white cloth and work from the outside of the stain inward using alternating clockwise and counterclockwise motions so as not to spread the stain.
3. Rinse thoroughly by applying 3 sprays of water on a new clean white cloth and blot to remove all soap residue. Repeat steps 2 and 3 as needed. **Because soap attracts dirt, it's essential to remove any cleaner residue to avoid future buildup. To ensure all residue is removed, consider at-home extraction (see below).**
4. Allow fabric to air dry.

3. Hot Water Extraction Method - Cleaning for Overall Refresh + Tougher Stains**Professional Extraction Cleaning Option**

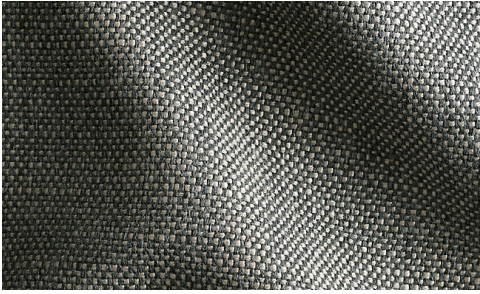
We recommend working with a local professional in your area for an overall cleaning of upholstery (especially if you have light colored fabrics). The same companies that clean rugs and carpets also clean upholstered furniture, for example Stanley Steamer. These companies have professional-grade hot water extraction machines that provide the best results.

At-Home Extraction Option

If you are using an at-home upholstery cleaner, we recommend using the portable Bissell Little Green® suction attachment without a brush and following the steps below:

1. Before extraction cleaning, ensure all spots or spills have been cleaned by following the spot cleaning method above.
2. Follow directions on filling your Bissell Green machine, filling only with water.
3. Place the nozzle on the upholstery and slowly and evenly suction the entire surface to prevent water marks during drying.
4. Allow fabric to air dry.

PERENNIALS® PERFORMANCE TEXTURED LINEN WEAVE 100% SOLUTION-DYED ACRYLIC

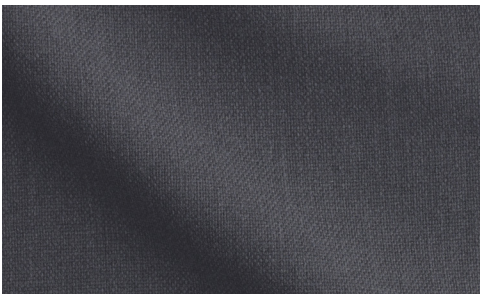


- Clean with natural soap in lukewarm water. Cleaners such as Formula 409® have also been used with success. Sponge briskly and rinse thoroughly with clean water to remove dirt. Air dry.
- To clean exterior cushions, flush with water and allow to air dry without removing the cover. Repeated removal of the cover may eventually break down the seams and distort the fabric.
- For stubborn stains, a solution of one part chlorine bleach to two parts water may be used. Rinse thoroughly.
- Professional cleaning is recommended for interior cushions.
- Repeated washing may reduce the effectiveness of the soil-resistant finish.



PERENNIALS
FIBER DESIGN
THIS MARK ASSURES GENUINE PERENNIALS
100% SOLUTION-DYED ACRYLIC TECHNOLOGY

PERENNIALS® PERFORMANCE TEXTURED LINEN SOLID 100% SOLUTION-DYED ACRYLIC



- Clean with natural soap in lukewarm water. Cleaners such as Formula 409® have also been used with success. Sponge briskly and rinse thoroughly with clean water to remove dirt. Air dry.
- To clean exterior cushions, flush with water and allow to air dry without removing the cover. Repeated removal of the cover may eventually break down the seams and distort the fabric.
- For stubborn stains, a solution of one part chlorine bleach to two parts water may be used. Rinse thoroughly.
- Professional cleaning is recommended for interior cushions.
- Repeated washing of Perennials® Performance fabrics may reduce the effectiveness of the soil-resistant finish.



PERENNIALS
FIBER DESIGN
THIS MARK ASSURES GENUINE PERENNIALS
100% SOLUTION-DYED ACRYLIC TECHNOLOGY

PERENNIALS® PERFORMANCE TEXTURED TWO-TONE LINEN 100% SOLUTION-DYED ACRYLIC

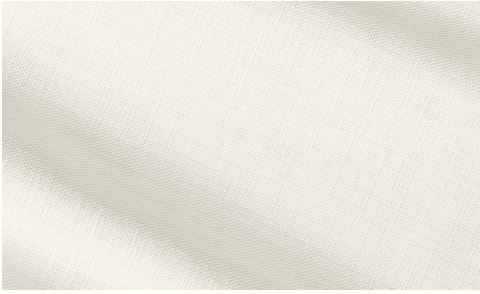


- Clean with natural soap in lukewarm water. Cleaners such as Formula 409® have also been used with success. Sponge briskly and rinse thoroughly with clean water to remove dirt. Air dry.
- To clean exterior cushions, flush with water and allow to air dry without removing the cover. Repeated removal of the cover may eventually break down the seams and distort the fabric.
- For stubborn stains, a solution of one part chlorine bleach to two parts water may be used. Rinse thoroughly.
- Professional cleaning is recommended for interior cushions.
- Repeated washing of Perennials® Performance fabrics may reduce the effectiveness of the soil-resistant finish.



PERENNIALS
FIBER DESIGN
THIS MARK ASSURES GENUINE PERENNIALS
100% SOLUTION-DYED ACRYLIC TECHNOLOGY

PERENNIALS® PERFORMANCE CLASSIC LINEN WEAVE 100% SOLUTION-DYED ACRYLIC



- Clean with natural soap in lukewarm water. Cleaners such as Formula 409® have also been used with success. Sponge briskly and rinse thoroughly with clean water to remove dirt. Air dry.
- To clean exterior cushions, flush with water and allow to air dry without removing the cover. Repeated removal of the cover may eventually break down the seams and distort the fabric.
- For stubborn stains, a solution of one part chlorine bleach to two parts water may be used. Rinse thoroughly.
- Professional cleaning is recommended for interior cushions.
- Repeated washing of Perennials® Performance fabrics may reduce the effectiveness of the soil-resistant finish.



PERENNIALS
FIBER DESIGN
THIS MARK ASSURES GENUINE PERENNIALS
100% SOLUTION-DYED ACRYLIC TECHNOLOGY

PARÀ ITALIAN PERFORMANCE BASKET WEAVE 100% SOLUTION-DYED ACRYLIC



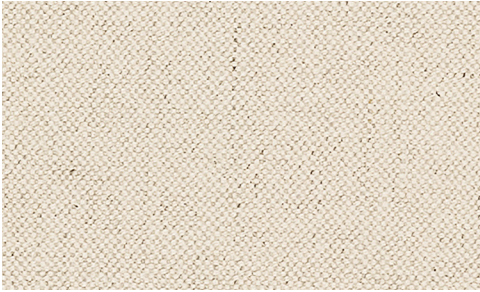
- Most spills can be blotted. Dab spills quickly with a soft cloth.
- Vacuum to remove dust and dirt.
- Spot-clean with a mild soap, rinse with lukewarm water and air dry.
- For stubborn stains, a solution of one part chlorine bleach to two parts water may be used. Rinse thoroughly.
- Dye lots may vary slightly.

PERFORMANCE VELVET 100% POLYESTER PILE



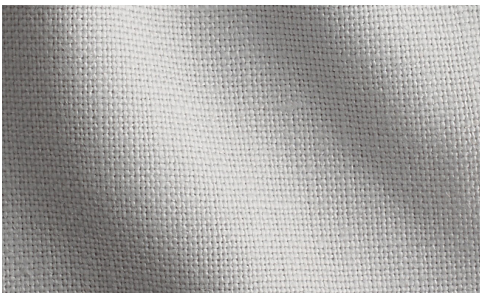
- To clean or refresh, use a vacuum with a fabric brush to vacuum up and down and left and right. Finish brushing in the direction of the pile.
- For wet stains, blot immediately with an absorbent paper towel or slightly damp cloth.
- For dry stains, scrape away any debris from the surface with a dull knife or spoon. Using a sponge or damp cloth and a solution of one part dishwashing detergent to ten parts water, gently blot the stain, working your way in a circle from the outside of the stain to the middle. Repeat the process as necessary until the stain is removed.
- After removing a stain, pat dry with a clean lint-free cloth; as the velvet dries, brush gently in the direction of the pile. To accelerate the drying process, brush while using a hairdryer on the warm setting about 12 inches away from the velvet.
- For slight bruises or crush marks, steam from approximately 12 inches away from pile and brush with a fabric brush in the direction of the pile.
- Do not use any cleaning product that contains bleach.
- For stubborn stains, we recommend professional dry cleaning.

CLASSIC BELGIAN LINEN 100% BELGIAN LINEN



- Dab spills quickly with a soft cloth.
- Vacuum with upholstery attachment to remove dust and dirt.
- Spot clean with distilled water and mild soap; rinse and blot thoroughly to remove soap residue. If spot persists, repeat the process.
- Professional cleaning recommended.

BELGIAN LINEN 100% BELGIAN LINEN; ALTA™ STAIN-REPELLENT FINISH



- **Basic Care.** Spills will bead on fabrics with an Alta stain-repellent finish. Blot spills gently with a clean, dry, absorbent cloth. Allow the cloth to absorb the liquid.
- **Stubborn stains.** Dampen cloth with warm water and blot the spill gently. Do not rub. Frequently change and dampen the cloth surface with warm water and repeat blotting. Air dry.
- **Stubborn stains such as olive oil and ketchup, or stains that have dried on the fabric.** Dampen a cloth with warm water and place a drop of mild dish soap onto the cloth. Blot the stain and rotate the cloth surface to absorb the stain. Use a clean, damp cloth to blot and remove dish soap residue. Air dry.
- **Red wine and whiskey.** Dampen a cloth with warm water and place a drop of mild laundry detergent. Blot the stain and rotate the cloth surface to absorb the stain. Use a clean, damp cloth to blot and remove laundry detergent residue. Air dry.
- Avoid the use of bleach or harsh chemicals. Do not dry clean or steam iron.

CLASSIC BELGIAN LINEN BASKETWEAVE 100% LINEN



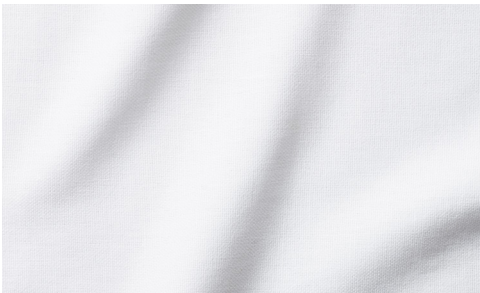
- Dab spills quickly with a soft cloth.
- Vacuum with upholstery attachment to remove dust and dirt.
- Spot clean with distilled water and mild soap; rinse and blot thoroughly to remove soap residue. If spot persists, repeat the process.
- Professional cleaning recommended.

BELGIAN LINEN BASKET WEAVE 100% LINEN



- **Basic Care.** Spills will bead on fabrics with an Alta stain-repellent finish. Blot spills gently with a clean, dry, absorbent cloth. Allow the cloth to absorb the liquid.
- **Stubborn stains.** Dampen cloth with warm water and blot the spill gently. Do not rub. Frequently change and dampen the cloth surface with warm water and repeat blotting. Air dry.
- **Stubborn stains such as olive oil and ketchup, or stains that have dried on the fabric.** Dampen a cloth with warm water and place a drop of mild dish soap onto the cloth. Blot the stain and rotate the cloth surface to absorb the stain. Use a clean, damp cloth to blot and remove dish soap residue. Air dry.
- **Red wine and whiskey.** Dampen a cloth with warm water and place a drop of mild laundry detergent. Blot the stain and rotate the cloth surface to absorb the stain. Use a clean, damp cloth to blot and remove laundry detergent residue. Air dry.
- Avoid the use of bleach or harsh chemicals. Do not dry clean or steam iron.

WASHED BELGIAN FLAX LINEN 100% LINEN



- For oily stains, use solvent.
- For water-based spots, use water-based cleaners.
- For other stains, spot clean with natural soap.
- Slipcovers should be dry cleaned.
- If a slipcover is washed, put it back on the frame while the fabric is still partly damp to prevent excess shrinkage. Shrinkage can be reversed by re-wetting or by ironing with heavy steam.
- Do not use cleaners with whitening agents on dyed fabric.
- Do not use chlorine bleach.

LAUNDERED BELGIAN LINEN 52% BELGIAN LINEN, 38% VISCOSE, 10% POLYESTER



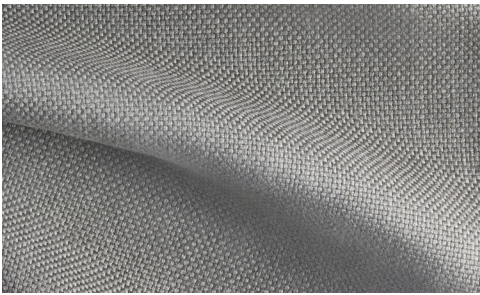
- Fully washable up to 100°F/40°C.
- May be dry cleaned.
- For spot cleaning, use a mild detergent and blot the stain with a dry, clean paper towel or cloth. Wet as needed and do not rub. Ironing may be needed to reactivate stain repellency.
- Do not use bleach.

STONEWASHED BELGIAN LINEN 100% LINEN



- Fully washable up to 100°F/40°C.
- May be dry cleaned.
- For spot cleaning, use a mild detergent and blot the stain with a dry, clean paper towel or cloth. Wet as needed and do not rub. Ironing may be needed to reactivate stain repellency.
- Do not use bleach.

BELGIAN FLAX LINEN BASKET WEAVE 100% BELGIAN FLAX LINEN



- Dry cleaning preferred.
- For spots, use solvent.
- Avoid rubbing the soiled area.

ITALIAN MERINO WOOL VELVET 100% MERINO WOOL PILE



- Dab spills quickly with a soft cloth.
- Treat stains as follows:
 - For dry stains, use alcohol, then dry clean.
 - For oily stains, use AVIO solvent, then dry clean.
 - For water-based stains, use soap and hot water, then dry clean.
- Vacuum with upholstery attachment to remove dust and dirt.
- Professional cleaning is recommended.

HOLLAND & SHERRY WOOL TWILL 100% WOOL



- Dry clean only.
- Do not use bleach, water or steam.
- Dab spills quickly with a soft cloth.

HOLLAND & SHERRY WOOL BOUCLÉ 100% WOOL



- Dry clean only.
- Do not use bleach, water or steam.
- Dab spills quickly with a soft cloth.

ITALIAN BOUCLÉ 29% ACRYLIC, 25% VIRGIN WOOL, 13% POLYESTER, 12% COTTON, 11% VISCOSE, 10% LINEN



- Dry clean only.
- Do not use bleach, water or steam.
- Spot clean only with a water-free dry-cleaning solvent.

ITALIAN TEXTURED BOUCLÉ 33% ACRYLIC, 32% VISCOSE, 16% WOOL, 8% POLYESTER, 7% COTTON, 4% LINEN



- Professional dry cleaning recommended.
- Do not use bleach or steam.
- Vacuum with upholstery attachment to remove dust and dirt.
- For liquid spills, blot gently with a clean, dry, white, absorbent cloth. Do not rub the liquid in.
- For stubborn stains or stains that have dried on the fabric, dampen a cloth with warm water and place a drop of mild dish soap onto the cloth. Blot the stain and rotate the cloth surface to absorb the stain. Use a clean, damp cloth to blot and remove dish soap residue. Air dry.
- If stains persist, use a solvent-based cleaner.

ITALIAN CHUNKY TEXTURED BOUCLÉ 26% COTTON, 25% WOOL, 25% ACRYLIC, 24% ALPACA



- Professional dry cleaning recommended.
- Do not use bleach or steam.
- Vacuum with upholstery attachment to remove dust and dirt.
- For liquid spills, blot gently with a clean, dry, white, absorbent cloth. Do not rub the liquid in.
- For stubborn stains or stains that have dried on the fabric, dampen a cloth with warm water and place a drop of mild dish soap onto the cloth. Blot the stain and rotate the cloth surface to absorb the stain. Use a clean, damp cloth to blot and remove dish soap residue. Air dry.
- If stains persist, use a solvent-based cleaner.

ITALIAN TEXTURED WEAVE 58% VISCOSE, 31% COTTON, 11% LINEN



- Professional dry cleaning recommended.
- For oily stains, use solvent.
- For other stains, spot clean with a damp cotton cloth and natural soap.
- Do not use bleach.

ITALIAN MÉLANGE WEAVE 41% ACRYLIC, 38% POLYESTER, 21% COTTON



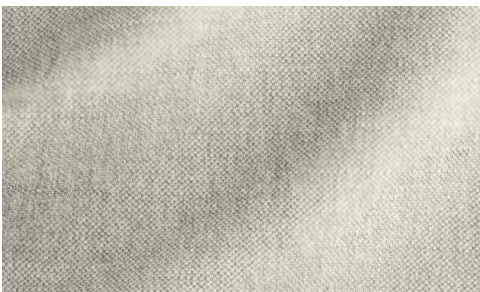
- Dry clean only.
- Do not use bleach, water or steam.
- Spot clean only with a water-free dry-cleaning solvent.

ITALIAN FAILLE 48% LINEN, 41% COTTON, 11% VISCOSE



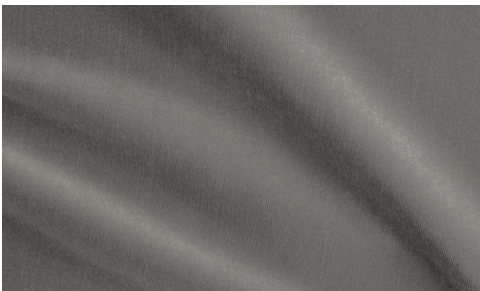
- Professional dry cleaning recommended.
- For oily stains, use solvent.
- For other stains, spot clean with a damp cotton cloth and natural soap.
- Do not use bleach.

BRUSHED BELGIAN FLAX LINEN COTTON 63% COTTON, 37% BELGIAN FLAX LINEN



- Dry clean only.
- Do not use bleach, water or steam.
- To refresh, use a vacuum with a fabric brush to vacuum up and down and left and right.
- In case of spills, use a clean, lint-free cloth to blot up the liquid as soon as possible; avoid rubbing the soiled area.
- For dried or set stains, dry cleaning is recommended.

VINTAGE VELVET 100% COTTON



- To clean or refresh, use a vacuum with a fabric brush to vacuum up and down and left and right. Finish brushing in the direction of the pile.
- For wet stains, blot immediately with an absorbent paper towel or slightly damp cloth.
- For dry stains, scrape away any debris from the surface with a dull knife or spoon. Using a sponge or damp cloth and a solution of one part dishwashing detergent to ten parts water, gently blot the stain, working your way in a circle from the outside of the stain to the middle. Repeat the process as necessary until the stain is removed.
- After removing a stain, pat dry with a clean lint-free cloth; as the velvet dries, brush gently in the direction of the pile. To accelerate the drying process, brush while using a hairdryer on the warm setting about 12 inches away from the velvet.
- For slight bruises or crush marks, steam from approximately 12 inches away from pile and brush with a fabric brush in the direction of the pile.
- Do not use any cleaning product that contains bleach.
- For stubborn stains, we recommend professional dry cleaning.

ITALIAN COTTON VELVET



Artisan crafted by a venerable Italian mill, our Italian Cotton Velvet offers a dense cotton pile, saturated color and a supremely soft hand. The smooth weave adds subtle luster. Normal wear may result in shading and crushing of the pile. A performance finish provides stain resistance.

CARE INSTRUCTIONS:

- Dab spills quickly with a soft cloth.
- Spot clean with warm water and mild soap; blot thoroughly to remove soap residue.
- Treat stains as follows:
 - For dry stains, use alcohol, then dry clean.
 - For oily stains, use solvent, then dry clean.
 - For red wine or lipstick, use alcohol, then dry clean.
 - For wet stains like fruit juice or ketchup, use soap and hot water, then dry clean.
- Vacuum with upholstery attachment to remove dust and dirt.
- If pile crushes due to normal use, brush gently with a stiff bristle brush to lift the pile.
- Steam or dry clean if needed. .

VEGAN LEATHER 100% POLYURETHANE; 100% POLYESTER BACKING



- Dust regularly with a soft, dry cloth.
- Blot spills immediately with a soft white cloth. If further cleaning is required, wipe with a damp cloth.
- For persistent stains, use a mild soap and warm water solution, testing it first on an inconspicuous area. Use a dry cloth to wipe away excess water.
- Avoid direct sunlight and direct heat exposure.
- If necessary, consult a professional cleaning specialist.