

RH

MARLOW MIRROR 30" (77 CM) X 40" (102 CM)

ASSEMBLY & INSTALLATION INSTRUCTIONS

ENGLISH

MARLOW MIRROR 30" (77 CM) X 40" (102 CM)

PARTS INCLUDED

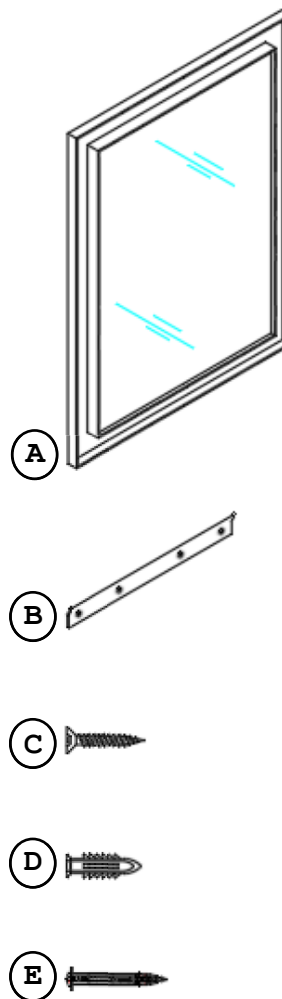
- (A) Mirror With Bracket x 1
- (B) Wall Bracket (400 x 43 x 10 x 3 mm) x 1
- (C) Flatten-head Screw (M8 x 40 mm) x 4
- (D) Plastic Anchors (ø14 x 47 mm) x 4
- (E) Hollow Wall Anchors (M3 x 60 mm) x 4

TOOLS NEEDED

- (A) Carpenter's level
- (B) Phillips head screwdriver

BEFORE YOU BEGIN

Professional installation recommended.



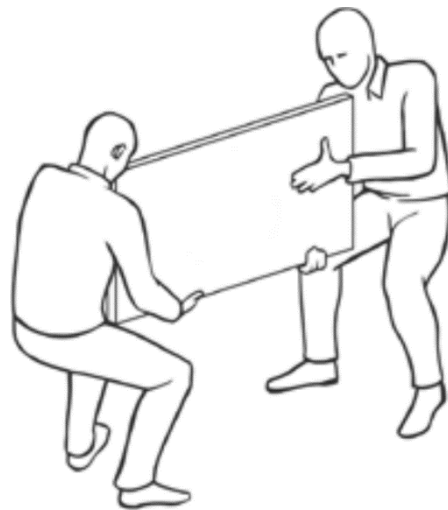
WARNING

DO NOT STACK ANYTHING ON TOP OF THE MIRROR. KEEP THE MIRROR PACKAGED UNTIL INSTALLATION. STORE MIRROR UPRIGHT ON THE LONG EDGE.

SAFETY INSTRUCTIONS

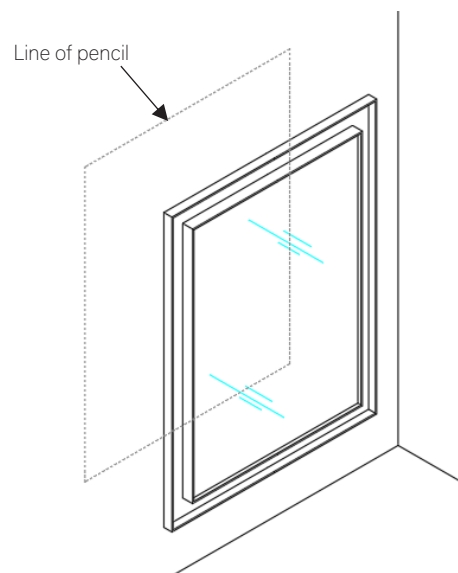
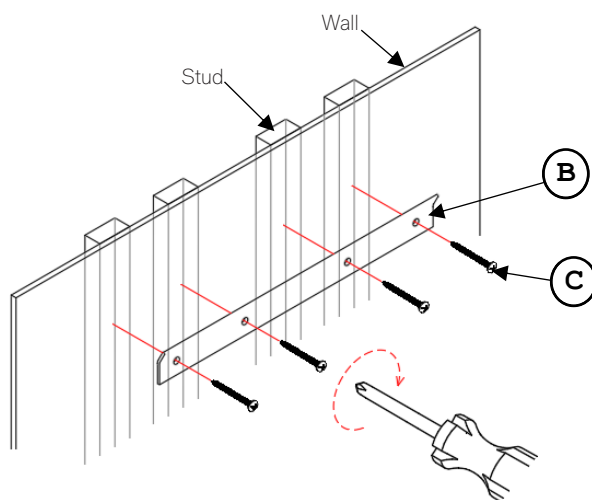
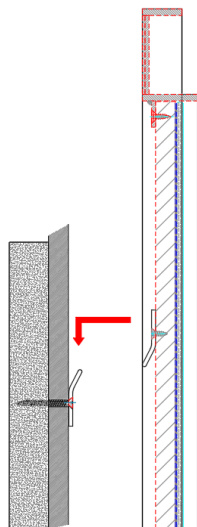
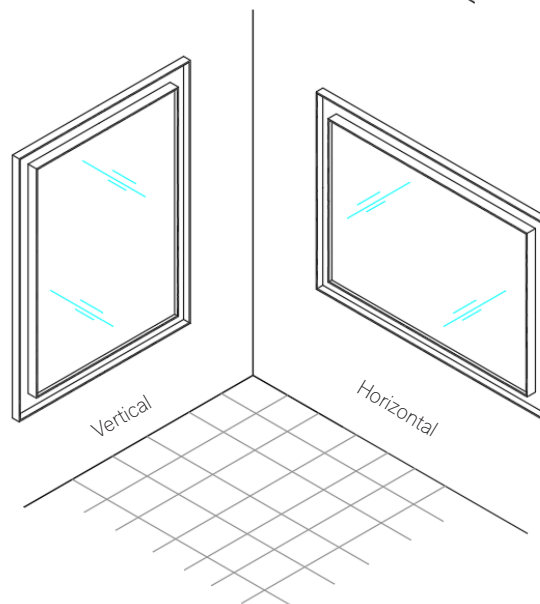
MIRROR HANDLING INSTRUCTIONS

1. Remove vertically from package.
2. Always carry mirror vertically as illustrated. Carrying flat will cause breakage.



INSTALLATION OF MIRROR

1. Determine desired location for the mirror (A).
2. Preset the mirror on wall and mark the location with a light pencil mark. Use tape or pencil to transcribe the location of the back of the mirror's pre-drilled bracket to the wall. See FIGURE 1.
3. Hold the wall bracket (B) against the wall, ensuring the bracket screw holes must be corresponding to each stud on the wall. Attach the wall bracket to the wall with stud by using screws (C) provided. Tighten until snug against wall. See FIGURE 2.
4. Note: If your wall type is not wall with stud, please use steps with wall type option as below:
 - CONCRETE: Drill pilot hole on each marking, and then insert plastic anchor (D). Use a screwdriver to attach the wall bracket to the wall with screws (C).
 - DRYWALL WITHOUT STUDS: Use hollow wall anchors and screws (E) to affix to drywall.
5. Carefully hang mirror (A) on wall bracket (B) as illustrated FIGURE 3. Mirror may be hung vertically or horizontally. Refer to FIGURE 4.

FIGURE 1**FIGURE 2****FIGURE 3****FIGURE 4**

WARRANTY

If you are not completely satisfied with your purchase, please contact us to return or exchange your item(s) within 30 days of the delivery date, with proof of purchase. Note that returns or exchanges are not accepted for special orders, items that have been installed, mattresses and/or foundations no longer in their original packaging, and other items listed below. Other exclusions may apply. Contact us for details. Unfortunately, galleries cannot accept returns of furniture or other large items.

CARE INSTRUCTIONS

To maintain and protect the luster of all product clean with a soft damp cloth only.

RH

MARLOW MIRROR 26" (67 CM) X 48" (122 CM)

ASSEMBLY & INSTALLATION INSTRUCTIONS

ENGLISH

MARLOW MIRROR 26" (67 CM) X 48" (122 CM)

PARTS INCLUDED

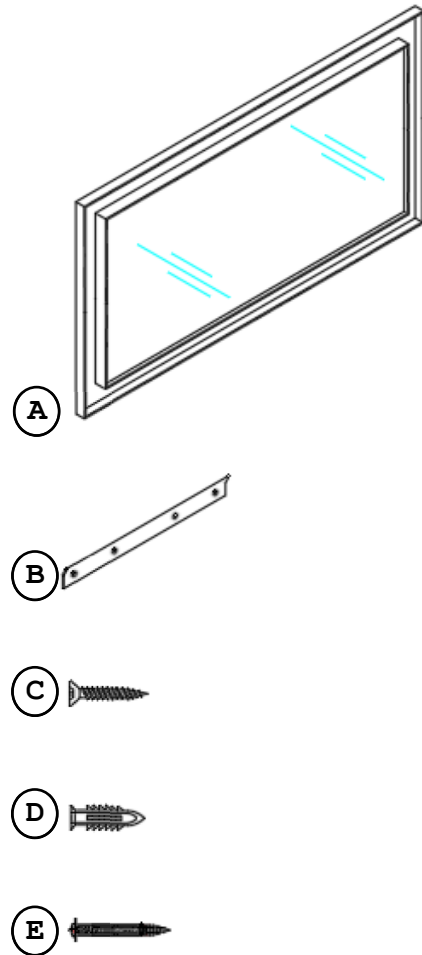
- (A) Mirror With Bracket x 1
- (B) Wall Bracket (400 x 43 x 10 x 3 mm) x 1
- (C) Flatten-head Screw (M8 x 40 mm) x 4
- (D) Plastic Anchors (ø14 x 47 mm) x 4
- (E) Hollow Wall Anchors (M3 x 60 mm) x 4

TOOLS NEEDED

- (A) Carpenter's level
- (B) Phillips head screwdriver

BEFORE YOU BEGIN

Professional installation recommended.



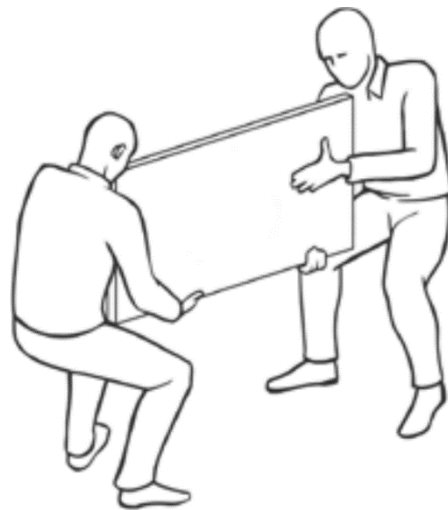
WARNING

DO NOT STACK ANYTHING ON TOP OF THE MIRROR. KEEP THE MIRROR PACKAGED UNTIL INSTALLATION. STORE MIRROR UPRIGHT ON THE LONG EDGE.

SAFETY INSTRUCTIONS

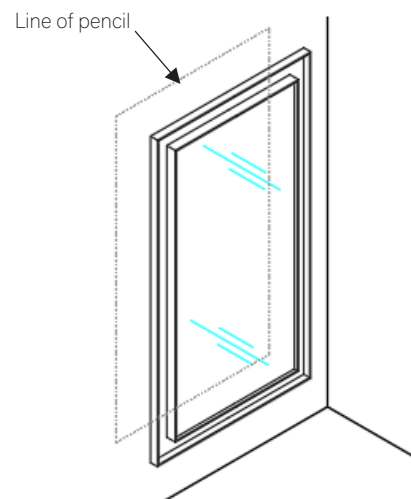
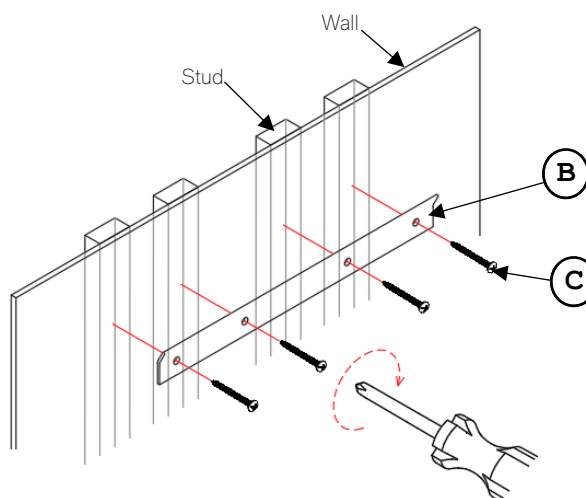
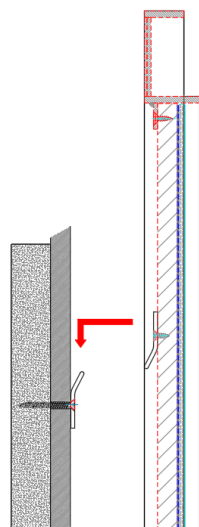
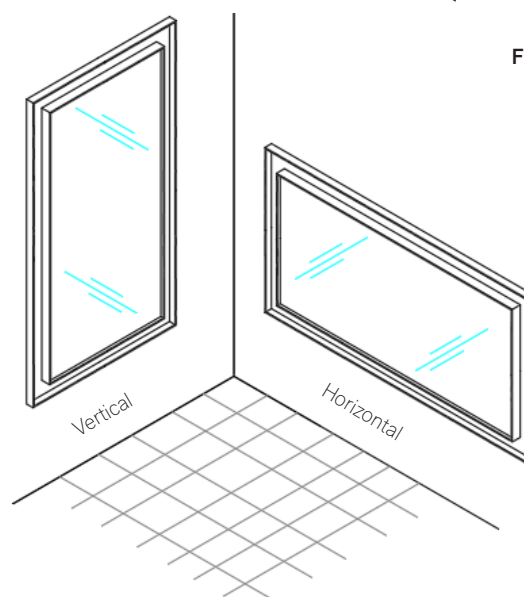
MIRROR HANDLING INSTRUCTIONS

1. Remove vertically from package.
2. Always carry mirror vertically as illustrated. Carrying flat will cause breakage.



INSTALLATION OF MIRROR

1. Determine desired location for the mirror (A).
2. Preset the mirror on wall and mark the location with a light pencil mark. Use tape or pencil to transcribe the location of the back of the mirror's pre-drilled bracket to the wall. See FIGURE 1.
3. Hold the wall bracket (B) against the wall, ensuring the bracket screw holes must be corresponding to each stud on the wall. Attach the wall bracket to the wall with stud by using screws (C) provided. Tighten until snug against wall. See FIGURE 2.
4. Note: If your wall type is not wall is not wall with stud, please use steps with wall type option as below:
 - CONCRETE: Drill pilot hole on each marking, and then insert plastic anchor (D). Use a screwdriver to attach the wall bracket to the wall with screws (C).
 - DRYWALL WITHOUT STUDS: Use hollow wall anchors and screws (E) to affix to drywall.
5. Carefully hang mirror (A) on wall bracket (B) as illustrated FIGURE 3. Mirror may be hung vertically or horizontally. Refer to FIGURE 4.

FIGURE 1**FIGURE 2****FIGURE 3****FIGURE 4**

WARRANTY

If you are not completely satisfied with your purchase, please contact us to return or exchange your item(s) within 30 days of the delivery date, with proof of purchase. Note that returns or exchanges are not accepted for special orders, items that have been installed, mattresses and/or foundations no longer in their original packaging, and other items listed below. Other exclusions may apply. Contact us for details. Unfortunately, galleries cannot accept returns of furniture or other large items.

CARE INSTRUCTIONS

To maintain and protect the luster of all product clean with a soft damp cloth only.

RH

MARLOW MIRROR 36" (92 CM) X 48" (122 CM)

ASSEMBLY & INSTALLATION INSTRUCTIONS

ENGLISH

MARLOW MIRROR 36" (92 CM) X 48" (122 CM)

PARTS INCLUDED

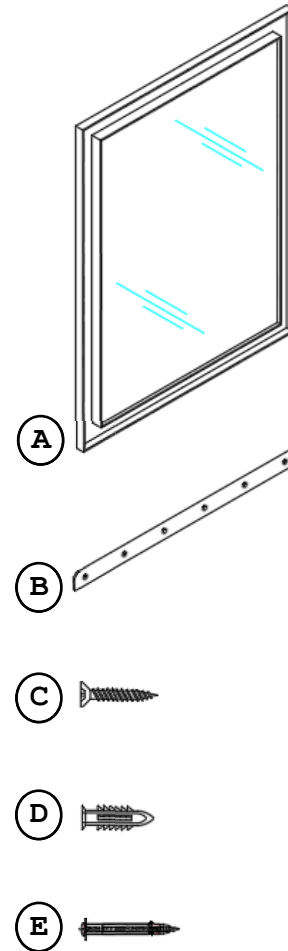
- (A) Mirror With Bracket x 1
- (B) Wall Bracket (550 x 43 x 10 x 3 mm) x 1
- (C) Flatten-head Screw (M8 x 40 mm) x 6
- (D) Plastic Anchors (ø14 x 47 mm) x 6
- (E) Hollow Wall Anchors (M3 x 60 mm) x 6

TOOLS NEEDED

- (A) Carpenter's level
- (B) Phillips head screwdriver

BEFORE YOU BEGIN

Professional installation recommended.



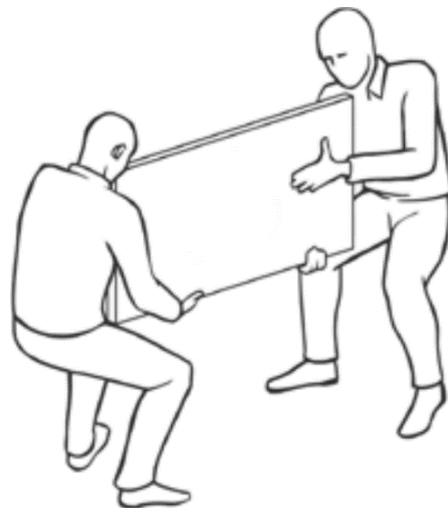
WARNING

DO NOT STACK ANYTHING ON TOP OF THE MIRROR. KEEP THE MIRROR PACKAGED UNTIL INSTALLATION. STORE MIRROR UPRIGHT ON THE LONG EDGE.

SAFETY INSTRUCTIONS

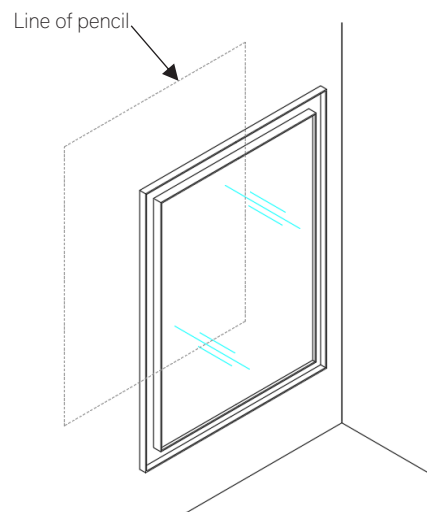
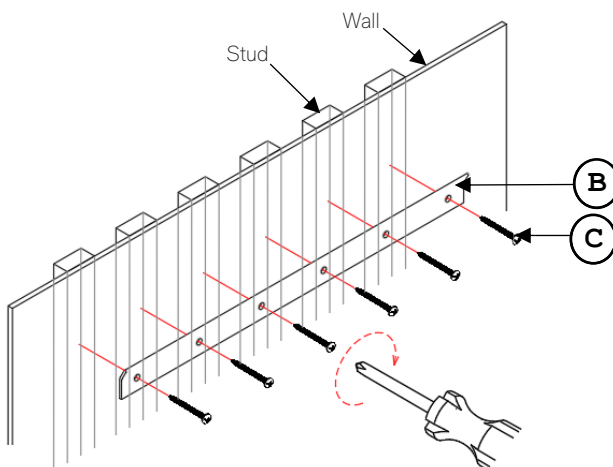
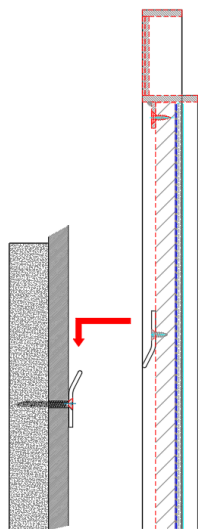
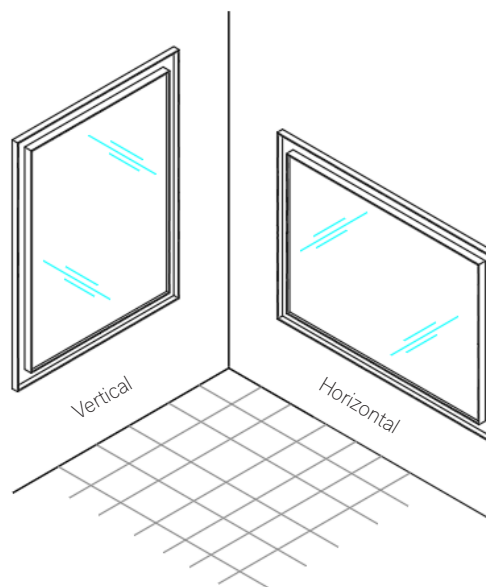
MIRROR HANDLING INSTRUCTIONS

1. Remove vertically from package.
2. Always carry mirror vertically as illustrated. Carrying flat will cause breakage.



INSTALLATION OF MIRROR

1. Determine desired location for the mirror (A).
2. Preset the mirror on wall and mark the location with a light pencil mark. Use tape or pencil to transcribe the location of the back of the mirror's pre-drilled bracket to the wall. See FIGURE 1.
3. Hold the wall bracket (B) against the wall, ensuring the bracket screw holes must be corresponding to each stud on the wall. Attach the wall bracket to the wall with stud by using screws (C) provided. Tighten until snug against wall. See FIGURE 2.
4. Note: If your wall type is not wall is not wall with stud, please use steps with wall type option as below:
 - CONCRETE: Drill pilot hole on each marking, and then insert plastic anchor (D). Use a screwdriver to attach the wall bracket to the wall with screws (C).
 - DRYWALL WITHOUT STUDS: Use hollow wall anchors and screws (E) to affix to drywall.
5. Carefully hang mirror (A) on wall bracket (B) as illustrated FIGURE3. Mirror may be hung vertically or horizontally. Refer to FIGURE 4.

FIGURE 1**FIGURE 2****FIGURE 3****FIGURE 4**

WARRANTY

If you are not completely satisfied with your purchase, please contact us to return or exchange your item(s) within 30 days of the delivery date, with proof of purchase. Note that returns or exchanges are not accepted for special orders, items that have been installed, mattresses and/or foundations no longer in their original packaging, and other items listed below. Other exclusions may apply. Contact us for details. Unfortunately, galleries cannot accept returns of furniture or other large items.

CARE INSTRUCTIONS

To maintain and protect the luster of all product clean with a soft damp cloth only.

RH

MARLOW MIRROR 42" (107 CM) X 78" (199 CM)

ASSEMBLY & INSTALLATION INSTRUCTIONS

ENGLISH

MARLOW MIRROR 42" (107 CM) X 78" (199 CM)

PARTS INCLUDED

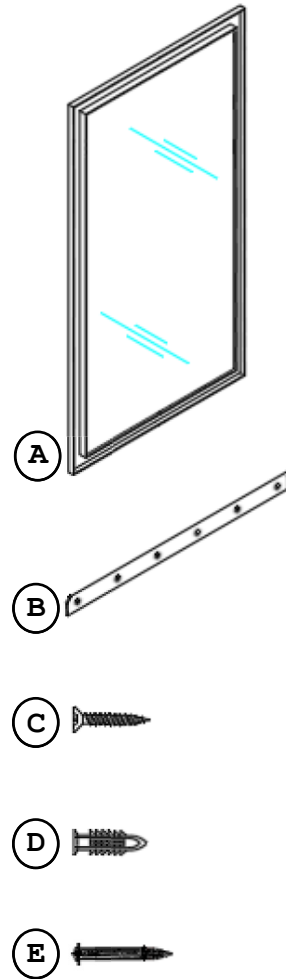
- (A) Mirror With Bracket x 1
- (B) Wall Bracket (550 x 43 x 10 x 3 mm) x 2
- (C) Flatten-head Screw (M8 x 40 mm) x 12
- (D) Plastic Anchors (ø14 x 47 mm) x 12
- (E) Hollow Wall Anchors (M3 x 60 mm) x 12

TOOLS NEEDED

- (A) Carpenter's level
- (B) Phillips head screwdriver

BEFORE YOU BEGIN

Professional installation recommended.



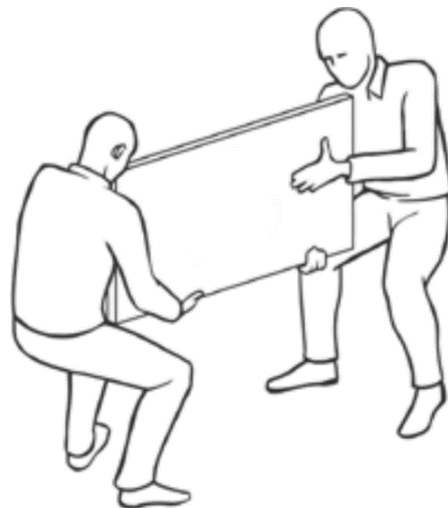
WARNING

DO NOT STACK ANYTHING ON TOP OF THE MIRROR. KEEP THE MIRROR PACKAGED UNTIL INSTALLATION. STORE MIRROR UPRIGHT ON THE LONG EDGE.

SAFETY INSTRUCTIONS

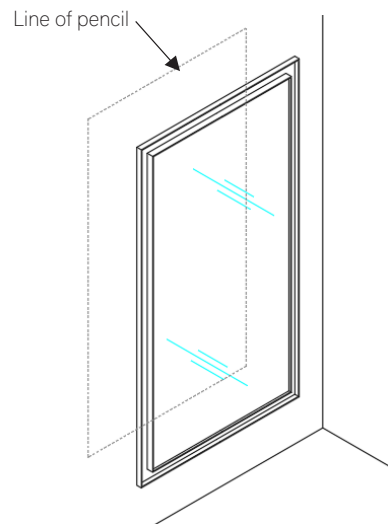
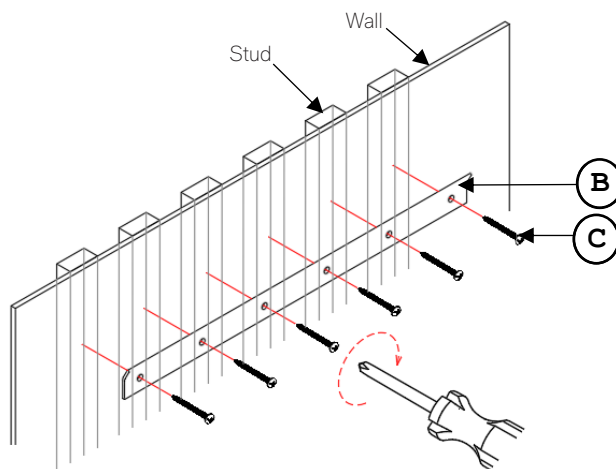
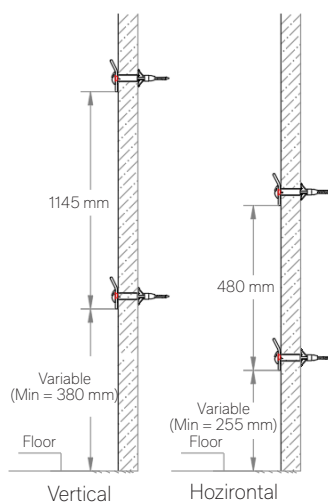
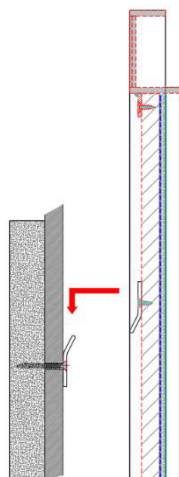
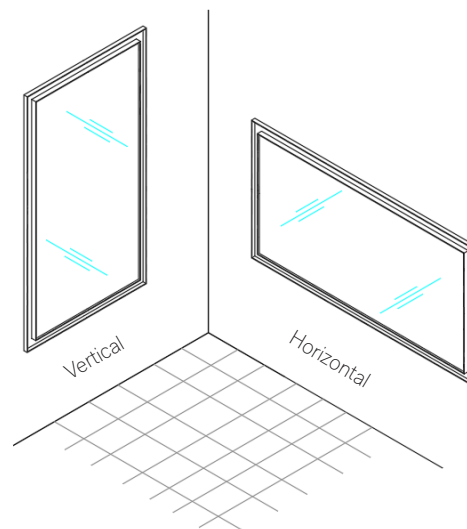
MIRROR HANDLING INSTRUCTIONS

1. Remove vertically from package.
2. Always carry mirror vertically as illustrated. Carrying flat will cause breakage.



INSTALLATION OF MIRROR

1. Determine desired location for the mirror (A).
2. Preset the mirror on wall and mark the location with a light pencil mark. Use tape or pencil to transcribe the location of the back of the mirror's pre-drilled bracket to the wall. See FIGURE 1.
3. Hold the wall bracket (B) against the wall, ensuring the bracket screw holes must be corresponding to each stud on the wall. Attach the wall bracket to the wall with stud by using screws (C) provided. Tighten until snug against wall. See FIGURE 2.
4. Note: If your wall type is not wall with stud, please use steps with wall type option as below:
 - CONCRETE: Drill pilot hole on each marking, and then insert plastic anchor (D). Use a screwdriver to attach the wall bracket to the wall with screws (C).
 - DRYWALL WITHOUT STUDS: Use hollow wall anchors and screws (E) to affix to drywall.
5. Carefully hang mirror (A) on wall bracket (B) as illustrated FIGURE 3. Mirror may be hung vertically or horizontally. Refer to FIGURE 4. At the same time, refer to distance of the wall brackets for the 2 option vertical or horizontal.

FIGURE 1**FIGURE 2****FIGURE 3****FIGURE 4**

WARRANTY

If you are not completely satisfied with your purchase, please contact us to return or exchange your item(s) within 30 days of the delivery date, with proof of purchase. Note that returns or exchanges are not accepted for special orders, items that have been installed, mattresses and/or foundations no longer in their original packaging, and other items listed below. Other exclusions may apply. Contact us for details. Unfortunately, galleries cannot accept returns of furniture or other large items.

CARE INSTRUCTIONS

To maintain and protect the luster of all product clean with a soft damp cloth only.

RH

MARLOW MIRROR 24" (61 CM) X 80" (204 CM)

ASSEMBLY & INSTALLATION INSTRUCTIONS

ENGLISH

MARLOW MIRROR 24" (61 CM) X 80" (204 CM)

PARTS INCLUDED

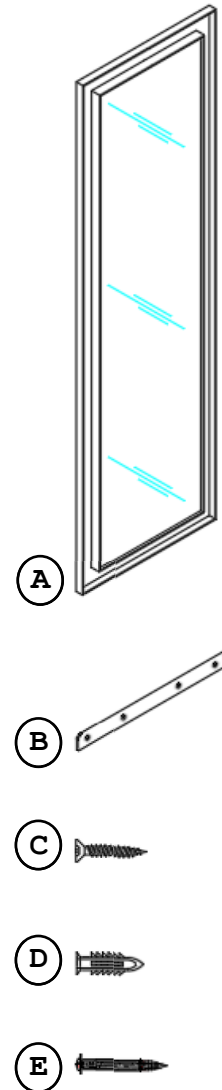
- (A) Mirror With Bracket x 1
- (B) Wall Bracket (400 x 43 x 10 x 3 mm) x 2
- (C) Flatten-head Screw (M8 x 40 mm) x 8
- (D) Plastic Anchors (ø14 x 47 mm) x 8
- (E) Hollow Wall Anchors (M3 x 60 mm) x 8

TOOLS NEEDED

- (A) Carpenter's level
- (B) Phillips head screwdriver

BEFORE YOU BEGIN

Professional installation recommended.



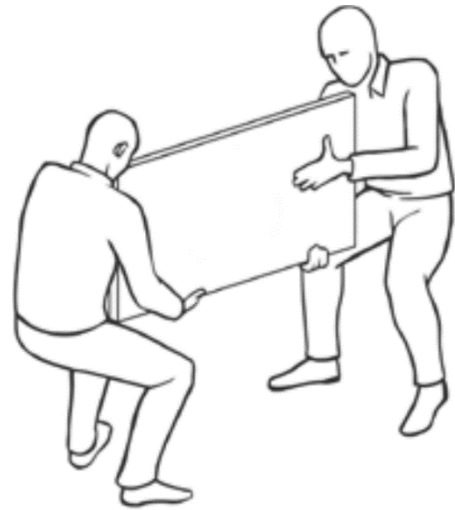
WARNING

DO NOT STACK ANYTHING ON TOP OF THE MIRROR. KEEP THE MIRROR PACKAGED UNTIL INSTALLATION. STORE MIRROR UPRIGHT ON THE LONG EDGE.

SAFETY INSTRUCTIONS

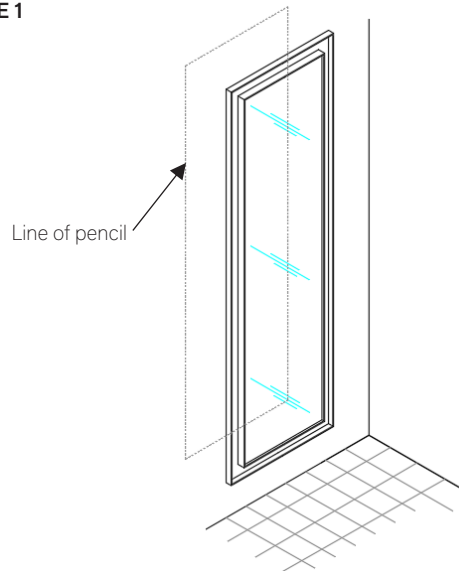
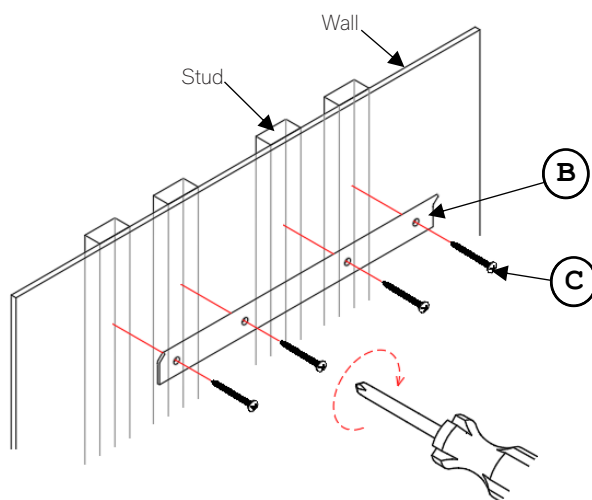
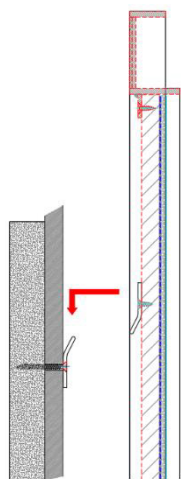
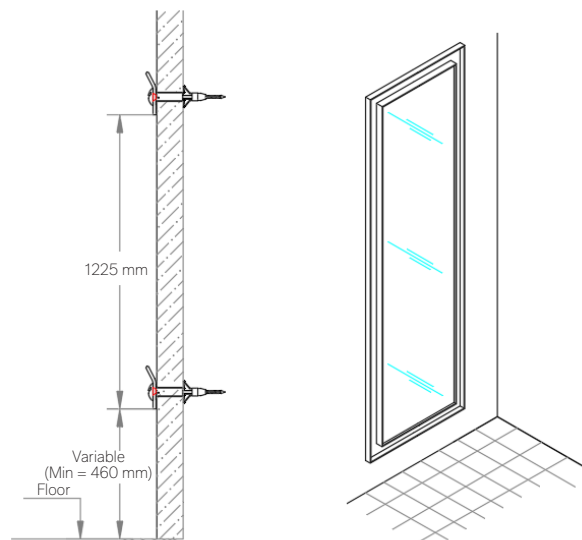
MIRROR HANDLING INSTRUCTIONS

1. Remove vertically from package.
2. Always carry mirror vertically as illustrated. Carrying flat will cause breakage.



INSTALLATION OF MIRROR

1. Determine desired location for the mirror (A).
2. Preset the mirror on wall and mark the location with a light pencil mark. Use tape or pencil to transcribe the location of the back of the mirror's pre-drilled bracket to the wall. See FIGURE 1.
3. Hold the wall bracket (B) against the wall, ensuring the bracket screw holes must be corresponding to each stud on the wall. Attach the wall bracket to the wall with stud by using screws (C) provided. Tighten until snug against wall. See FIGURE 2. At the same time, refer to distance of the wall brackets as illustrated FIGURE 4.
4. Note: If your wall type is not wall with stud, please use steps with wall type option as below:
 - CONCRETE: Drill pilot hole on each marking, and then insert plastic anchor (D). Use a screwdriver to attach the wall bracket to the wall with screws (C).
 - DRYWALL WITHOUT STUDS: Use hollow wall anchors and screws (E) to affix to drywall.
5. Carefully hang mirror (A) on wall bracket (B) as illustrated FIGURE 3. Mirror may be hung vertically or horizontally. Refer to FIGURE 4.

FIGURE 1**FIGURE 2****FIGURE 3****FIGURE 4**

WARRANTY

If you are not completely satisfied with your purchase, please contact us to return or exchange your item(s) within 30 days of the delivery date, with proof of purchase. Note that returns or exchanges are not accepted for special orders, items that have been installed, mattresses and/or foundations no longer in their original packaging, and other items listed below. Other exclusions may apply. Contact us for details. Unfortunately, galleries cannot accept returns of furniture or other large items.

CARE INSTRUCTIONS

To maintain and protect the luster of all product clean with a soft damp cloth only.

RH

MARLOW MIRROR 54" (137 CM) X 96" (244 CM)

ASSEMBLY & INSTALLATION INSTRUCTIONS

ENGLISH

MARLOW MIRROR 54" (137 CM) X 96" (244 CM)

PARTS INCLUDED

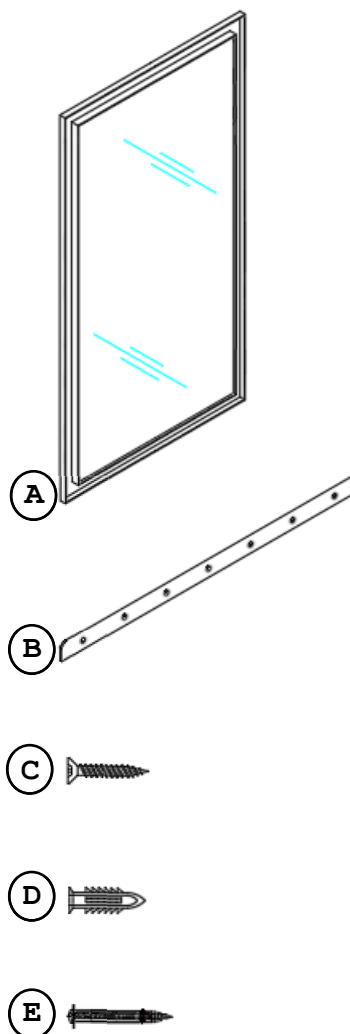
- (A) Mirror With Bracket x 1
- (B) Wall Bracket (700 x 43 x 10 x 3 mm) x 2
- (C) Flatten-head Screw (M8 x 40 mm) x 14
- (D) Plastic Anchors (ø14 x 47 mm) x 14
- (E) Hollow Wall Anchors (M3 x 60 mm) x 14

TOOLS NEEDED

- (A) Carpenter's level
- (B) Phillips head screwdriver

BEFORE YOU BEGIN

Professional installation recommended.



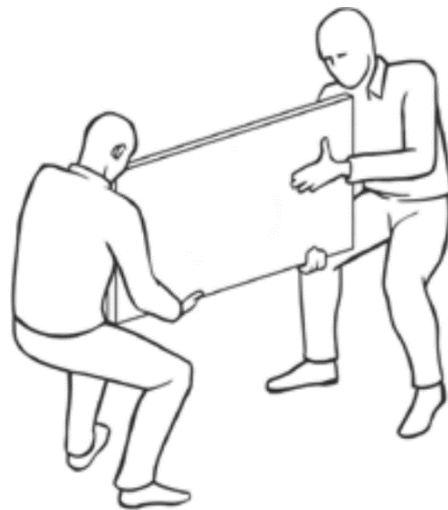
WARNING

DO NOT STACK ANYTHING ON TOP OF THE MIRROR. KEEP THE MIRROR PACKAGED UNTIL INSTALLATION. STORE MIRROR UPRIGHT ON THE LONG EDGE.

SAFETY INSTRUCTIONS

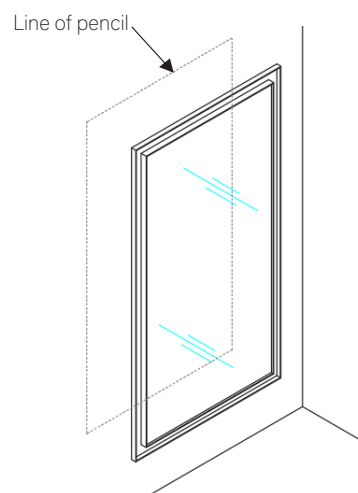
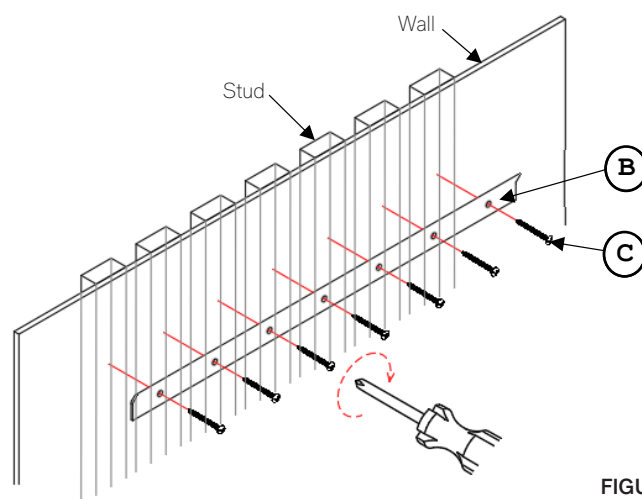
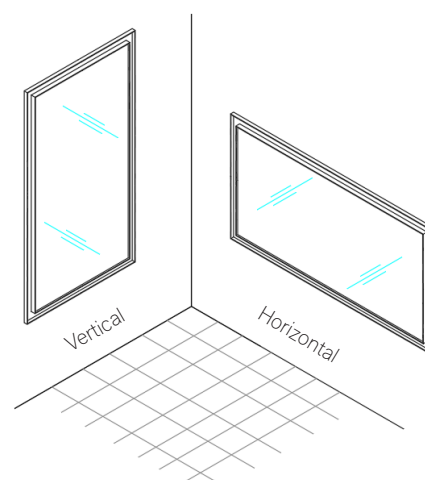
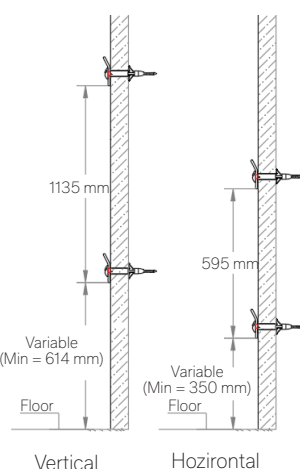
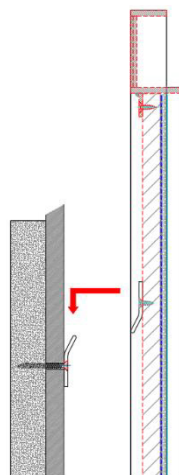
MIRROR HANDLING INSTRUCTIONS

1. Remove vertically from package.
2. Always carry mirror vertically as illustrated. Carrying flat will cause breakage.



INSTALLATION OF MIRROR

1. Determine desired location for the mirror (A).
2. Preset the mirror on wall and mark the location with a light pencil mark. Use tape or pencil to transcribe the location of the back of the mirror's pre-drilled bracket to the wall. See FIGURE 1.
3. Hold the wall bracket (B) against the wall, ensuring the bracket screw holes must be corresponding to each stud on the wall. Attach the wall bracket to the wall with stud by using screws (C) provided. Tighten until snug against wall. See FIGURE 2.
4. Note: If your wall type is not wall is not wall with stud, please use steps with wall type option as below:
 - CONCRETE: Drill pilot hole on each marking, and then insert plastic anchor (D). Use a screwdriver to attach the wall bracket to the wall with screws (C).
 - DRYWALL WITHOUT STUDS: Use hollow wall anchors and screws (E) to affix to drywall.
5. Carefully hang mirror (A) on wall bracket (B) as illustrated FIGURE 3. Mirror may be hung vertically or horizontally. Refer to FIGURE 4. At the same time, refer to distance of the wall brackets for the 2 option vertical or horizontal.

FIGURE 1**FIGURE 2****FIGURE 4****FIGURE 3**

WARRANTY

If you are not completely satisfied with your purchase, please contact us to return or exchange your item(s) within 30 days of the delivery date, with proof of purchase. Note that returns or exchanges are not accepted for special orders, items that have been installed, mattresses and/or foundations no longer in their original packaging, and other items listed below. Other exclusions may apply. Contact us for details. Unfortunately, galleries cannot accept returns of furniture or other large items.

CARE INSTRUCTIONS

To maintain and protect the luster of all product clean with a soft damp cloth only.