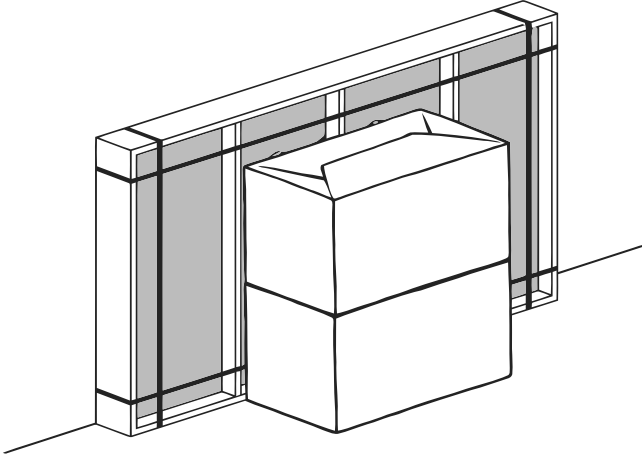
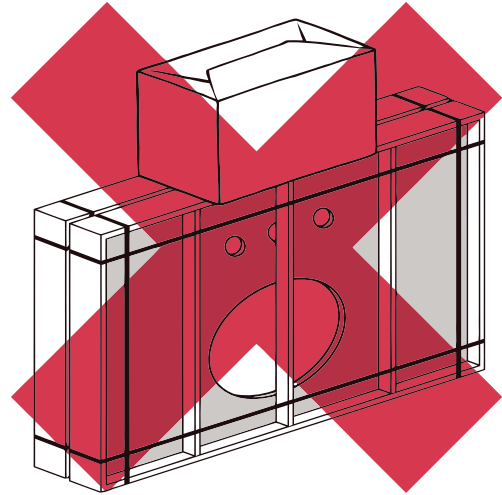


CRATE STORAGE

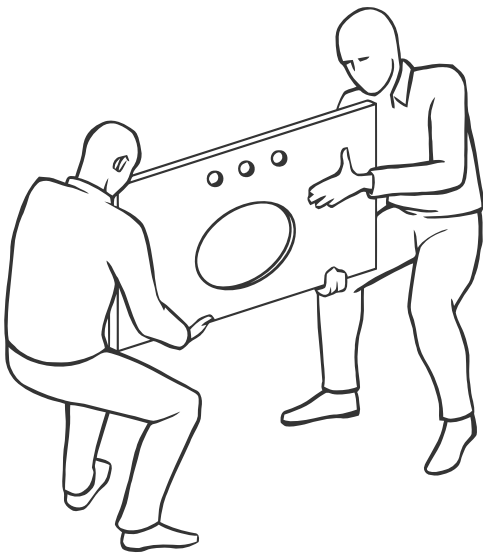


- Keep Stone Top in its crate until installation
- Store crate vertically in a safe location



- Do not stack anything on top of crate

STONE TOP TRANSPORT

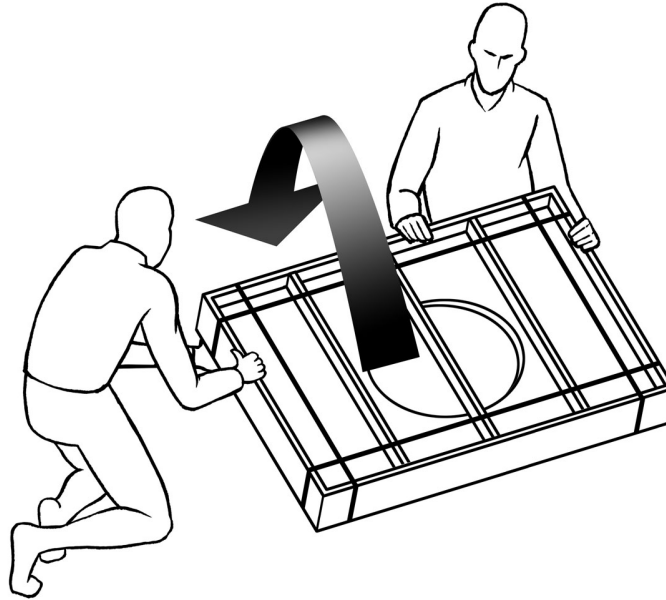


- When moving Stone Top always use a two-person crew.
- Always carry Stone Top vertically.

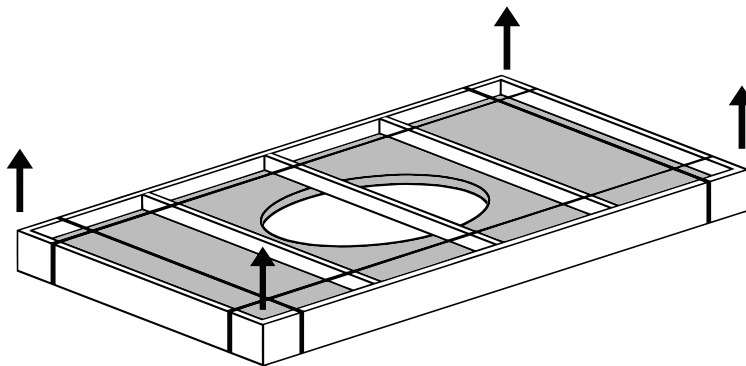


- Do not carry Stone Top horizontally as it increases the risk of breakage or cracking.

STONE TOP UNPACKING



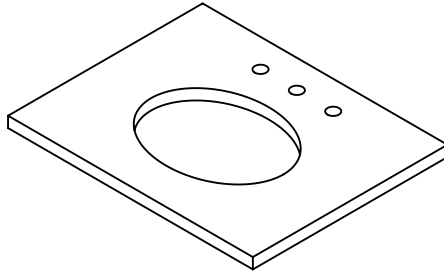
- Carefully, without allowing any freefall, rotate the crate from vertical to flat.



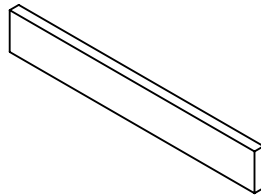
- Remove metal bands, unscrew the slats or lid, and lift the Stone Top out of the crate.

PARTS LIST

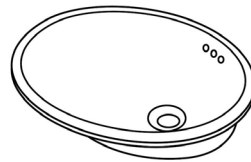
A. Stone Top



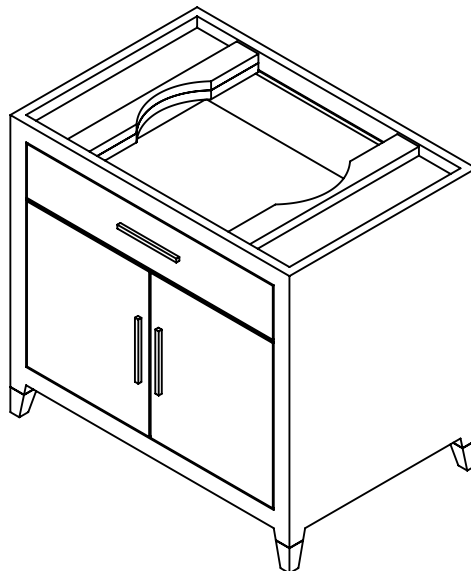
B. Backsplash



C. Basin



D. Vanity Base





GRAYDON SHAGREEN SINGLE VANITY

STONE TOP INSPECTION

- Before you begin, inspect the Stone Top for cracks and defects. If defects are detected, do not install and please call 800-762-1005. If no defects are detected, clean Stone Top with a soft cloth.
-

TOOL AND MATERIAL REQUIREMENTS

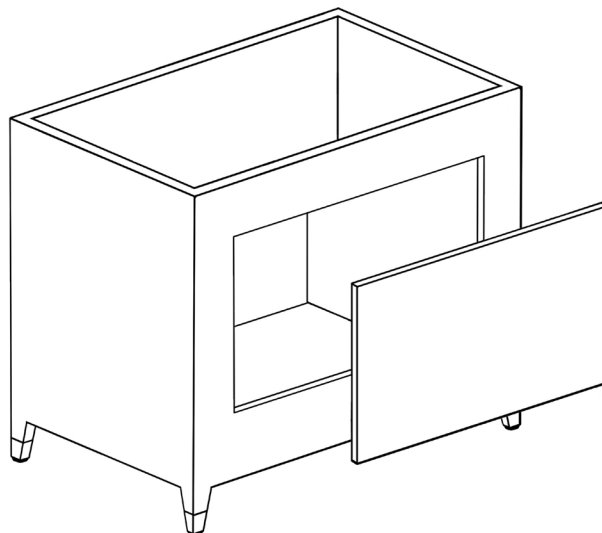
- Flat, non-abrasive work surface (blanket or smooth cardboard)
 - Sealant
 - Carpenter's level
-

PRIMARY INSTALLATION REQUIREMENTS

- Professional two-person crew
 - Water supply and drain piping installed according to local plumbing and building codes (sold separately)
 - Wall and floor are square and plumb at installation site
 - Vanity Base [D] installed square and plumb with wall and floor. Vanity Base [D] also needs to be level
 - Ensure Stone Top [A] is the correct size to match the Vanity Base [D]
-

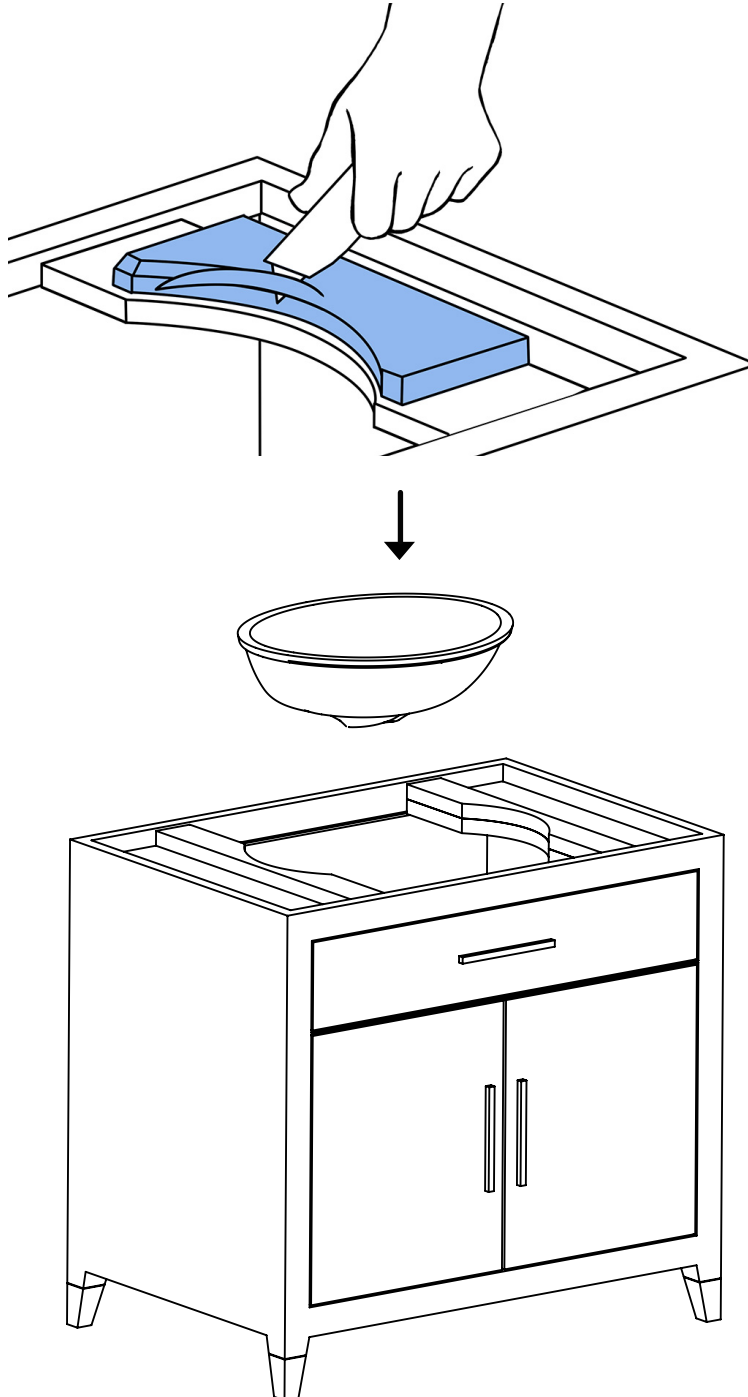
BACK PANEL REMOVAL

- Remove screws and back panels. Back panels can be discarded or reattached with cutouts to accomodate plumbing



BASIN INSTALLATION

1. Position Basin [C] on cradles on base, if necessary, trim foam support to ensure proper fit. Basin should sit even with the top of the Vanity Base.
2. Apply a continuous bead of silicone sealant to the top surface of Basin [C] rim where it comes in contact with underside of the Stone Top [A].



STONE TOP INSTALLATION



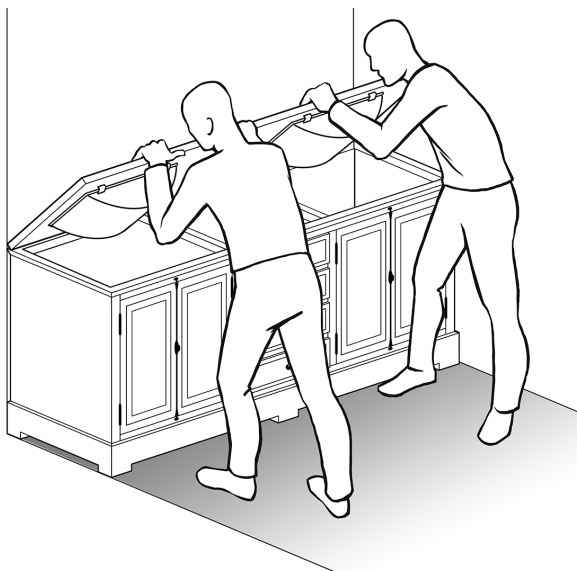
Caution! Installation between two walls requires special care.
If installing between two walls, stop here and follow the second set of instructions.

STANDARD STONE TOP INSTALLATION GUIDELINES

1. Using a two-person crew, lift Stone Top and set it on top of the Vanity Base [D].
 2. Apply Silicone sealant at the seam where Backsplash [B] meets the wall.
-

STONE TOP INSTALLATION BETWEEN TWO WALLS

1. Using a two-person crew, lift Stone Top and set its rear edge on the back of the Vanity Base [D] (closest to the rear wall). See below illustration.
2. Lower front of Stone Top onto the Vanity Base, making sure both ends are lowered at the same rate.
3. Do not shimmy, twist or turn the Stone Top while lowering as this increases the risk of breakage.
4. Apply Silicone sealant at the seam where Backsplash [B] meets the wall.

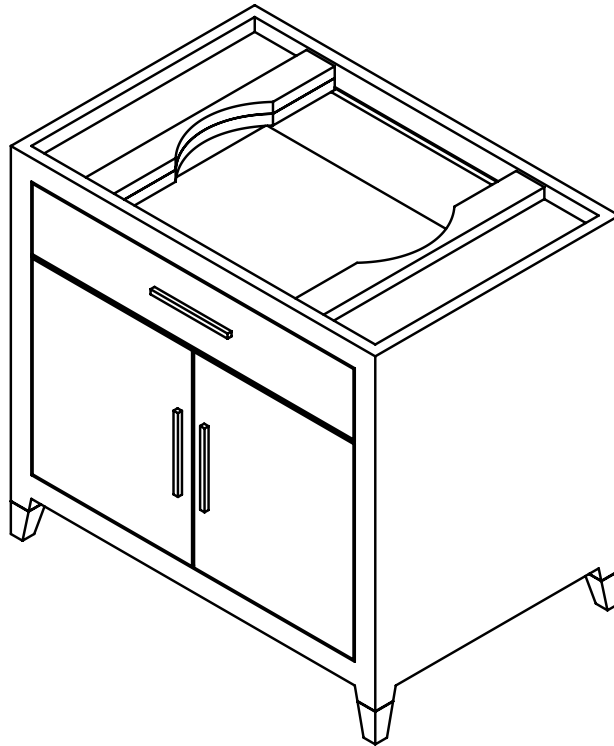


CLEANING AND MAINTENANCE

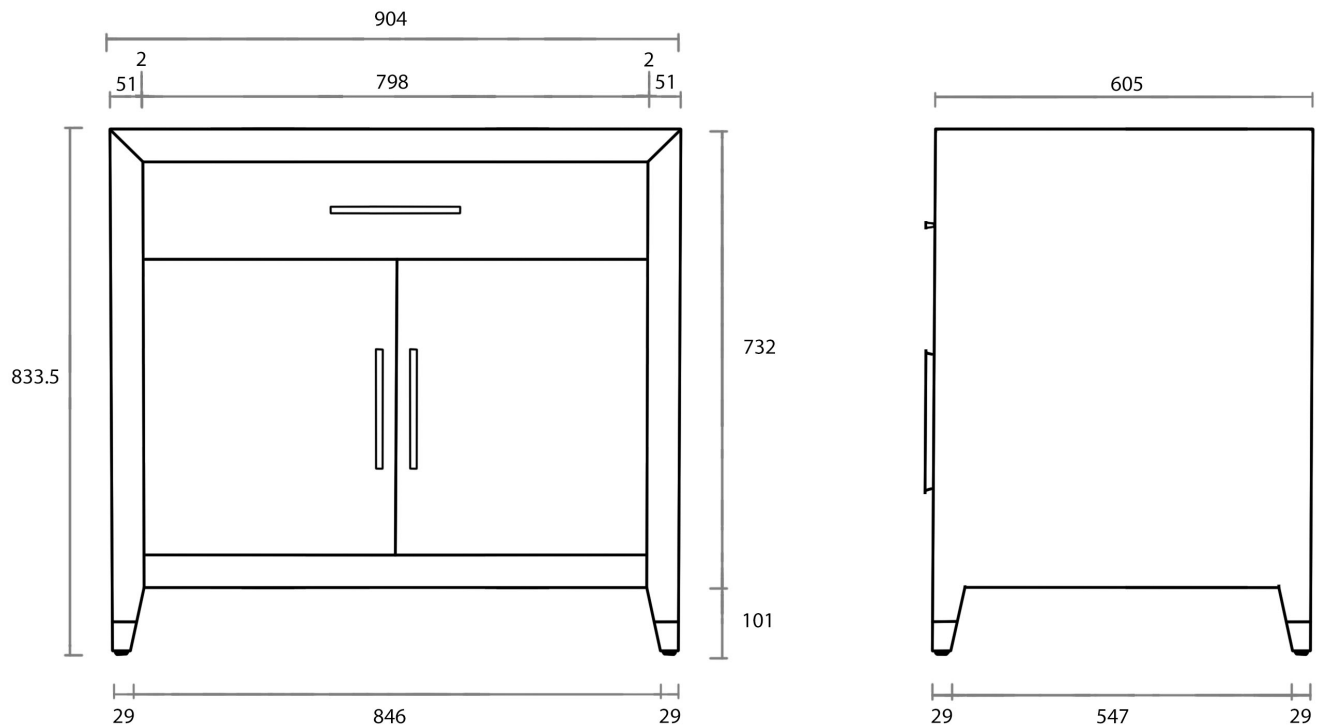
- Avoid abrasive and harsh chemical cleaners.
 - RH Stone Tops have a honed finish, hand-polished edges, and are sealed twice with inert silicone sealant.
 - Stone Tops should be re-sealed annually.
-

RH

GRAYDON SHAGREEN SINGLE VANITY

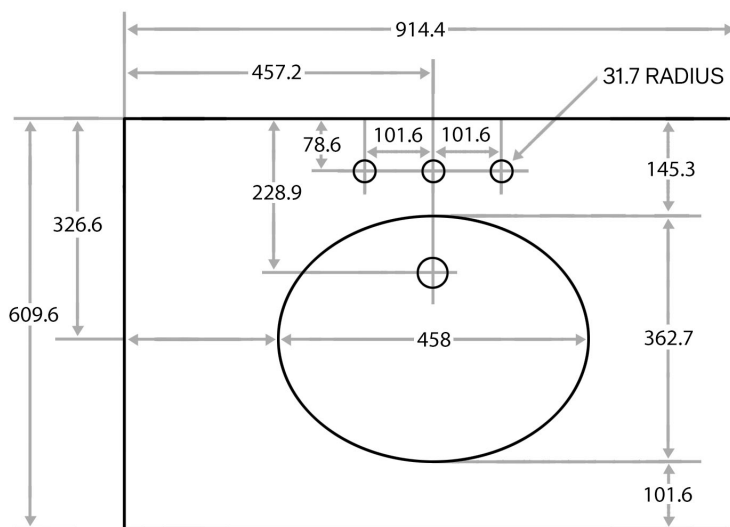


VANITY DIMENSIONS IN MILLIMETERS



GRAYDON SHAGREEN SINGLE VANITY

Technical drawing of a backsplash showing dimensions: 901.7 (width) and 76.2 (height).



Technical drawing of a 100mm diameter flange. The drawing shows a top view of the flange with a central hole. The outer diameter is 100mm, indicated by a dimension line at the top. The inner diameter of the central hole is 19mm, indicated by a dimension line at the top. The thickness of the flange is 17 1/4mm, indicated by a dimension line on the left. The radius of the outer edge is 1 3/4 inches, indicated by a dimension line on the right. The radius of the central hole is 2 3/4 inches, indicated by a dimension line on the right. The drawing is labeled '100mm' at the top and '17 1/4' on the left.

