



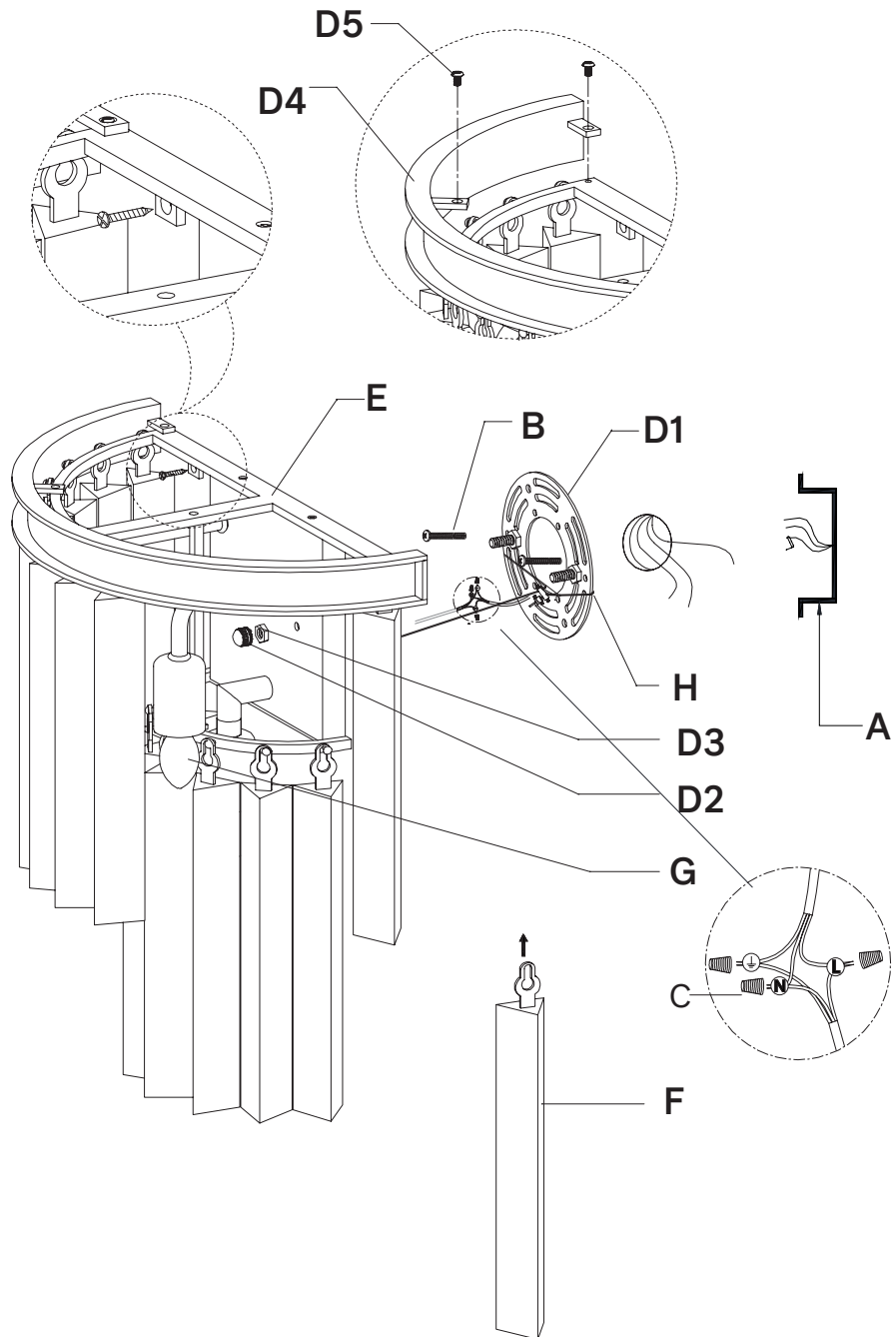
1920s ODEON SCONCE

ASSEMBLY & INSTALLATION INSTRUCTIONS

UNITED STATES ENGLISH

1920s ODEON SCONCE**PARTS INCLUDED:**

- (A) Junction Box, 25lbs/11.3kg MIN. FIXTURE RATED (not included)
- (B) Mounting Bolts (2 pcs; for junction box only)
- (C) Wire Nuts (3)
- (D1) Wall Plate (1)
- (D2) Nut Caps (2)
- (D3) Nuts (2)
- (D4) Metal Ring (1)
- (D5) Bolts (5)
- (E) Fixture Body (1)
- (F) Glass Drops (20)
- (G) Bulbs (3)
- (H) Safety Cable (1)



IMPORTANT: PLEASE READ

PLEASE FOLLOW THE ASSEMBLY INSTRUCTIONS CLOSELY. IMPROPER ASSEMBLY OR INSTALLATION CAN RESULT IN PERSONAL OR PROPERTY DAMAGE. MOUNTING HARDWARE HAS BEEN PROVIDED FOR MOUNTING TO JUNCTION BOX. UNIQUE OR ALTERNATIVE INSTALLATION TYPES MAY REQUIRE DIFFERENT MOUNTING HARDWARE, WHICH HAS NOT BEEN INCLUDED. ALWAYS CONSULT WITH A LICENSED ELECTRICIAN BEFORE INSTALLATION.

INSTALLATION BY A LICENSED ELECTRICIAN IS STRONGLY RECOMMENDED.

IMPORTANT SAFETY FEATURES**BULBS**

This fixture has been rated for three (3) 25-watt maximum E12 TYPE C7 incandescent bulbs (three (3) 5-watt E12 TYPE C7 incandescent bulbs included) or three (3) 6-watt maximum E12 LED TYPE C7 bulbs (not included). To avoid the risk of fire, do not exceed the recommended wattage.

DIMMER SWITCH COMPATIBILITY

This fixture is dimmer-switch compatible and may be used with a forward- or reverse-phase dimmer switch.

WARNINGS

All wires are connected. When unpacking, be careful not to pull wires, as damage may result. Do not connect electricity until the fixture is fully assembled. To reduce the risk of fire, electrical shock, or personal injury, always turn off fixture and allow it to cool prior to replacing the lightbulbs. Do not touch or look directly at the bulbs when fixture is illuminated. Keep flammable materials away from lit bulbs.

WARNING: STRANGULATION HAZARD

Keep cord at least 3 feet (91cm) away from cribs, bassinets, and toddler beds.

Keep out of reach of children under 3 years of age.

THIS PRODUCT IS NOT A TOY AND HAS NO PLAY VALUE.

ASSEMBLY AND INSTALLATION**SHUT OFF THE MAIN ELECTRICAL SUPPLY FROM THE FUSE BOX OR CIRCUIT BREAKER PANEL.**

1. Carefully remove all parts from the box and remove all plastic coverings.
2. Turn OFF power to junction box (A) where the fixture will be installed.
3. Loosen the nut caps (D2) and nuts (D3), detach the wall plate (D1) from the fixture body (E).
4. Loosen the bolts (D5) from fixture box (E), detach the metal ring (D4) from the fixture body (E).
5. Have a professional contractor reinforce wall.
6. Attach the wall plate (D1) to the junction box and secure with mounting bolts (B).
7. Carefully inspect the fixture wires. One is the ground wire (marked with \oplus). The second is the neutral wire (marked with N). The third wire is the live/hot wire (marked with L).
8. Connect the fixture ground wire to the power supply ground wire with wire nut (C).

NOTE: IT IS IMPERATIVE THAT THE OUTLET BOX IN YOUR HOME BE PROPERLY GROUNDED.

9. Connect the fixture neutral wire to the power supply neutral wire with wire nut (C).
10. Connect the fixture live/hot wire to the power supply live/hot wire with wire nut (C).

CAUTION: DO NOT REVERSE THE HOT AND NEUTRAL CONNECTIONS, AS SAFETY WILL BE COMPROMISED.

11. Attach the fixture body (E) to the wall plate (D1) and secure with nuts (D3) and nut caps (D2).
12. Fasten bulbs (G) into the sockets.
13. Hang the glass drops (F) from bottom layer to the top layer.
14. Attach the metal ring (D4) to the fixture body (E) with bolts (D5).
15. Restore power to the junction box and test fixture.
16. Assembly is complete.

CARE INSTRUCTIONS

Do not use polishes or cleaners on the fixture. Wipe clean with a soft, dry cloth.