

## AGED BRASS FINISH



Our richly plated Aged Brass finish provides the uncompromising protection of a clear, hand-polished lacquer coat on top of a solid, non-corrosive, drop-forged brass fixture. It offers long-lasting shine, even in wet environments.

## CARE INSTRUCTIONS:

- Wipe the fixture with a soft cloth after each use to prevent mineral build-up and water-spotting.
- Should spotting occur, remove it with warm water and a soft, damp cloth.
- Do not use harsh chemicals, abrasive cleansers, ammoniated products, rubbing alcohol, detergents, astringents or bleach-based cleaners. They may remove the protective coating and damage the finish.
- Do not allow soap scum or toothpaste to build up on the product. These will gradually wear away the protective coating.
- Use [Brass ProTech](#) on your hardware immediately after installation for added protection. Clean periodically by applying it with a soft, clean cloth to gently treat oxidation or remove surface spots. Once dry, remove the polish by gently rubbing with a soft, dry cloth to a high luster.
- If the finish begins to show hard water spots, try cleaning them with a solution of half water and half distilled white vinegar.

## LACQUERED BURNISHED BRASS FINISH



Our hand-polished Lacquered Burnished Brass finish is produced using the PVD (physical vapor deposition) process to create the most durable coating on the market. This rich and lustrous finish ensures long-lasting protection for the non-corrosive, drop-forged solid brass fixture.

## CARE INSTRUCTIONS:

- Wipe the fixture with a soft cloth after each use to prevent mineral build-up and water-spotting.
- Should spotting occur, remove it with warm water and a soft, damp cloth.
- Do not use harsh chemicals, abrasive cleansers, ammoniated products, rubbing alcohol, detergents, astringents or bleach-based cleaners. They may remove the protective coating and damage the finish.
- Do not allow soap scum or toothpaste to build up on the product. These will gradually wear away the protective coating.
- Use [Brass ProTech](#) on your hardware immediately after installation for added protection. Clean periodically by applying it with a soft, clean cloth to gently treat oxidation or remove surface spots. Once dry, remove the polish by gently rubbing with a soft, dry cloth to a high luster.
- If the finish begins to show hard water spots, try cleaning them with a solution of half water and half distilled white vinegar.

## POLISHED NICKEL FINISH

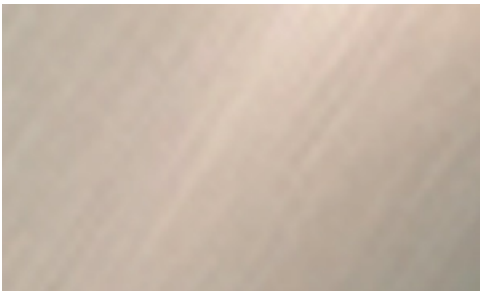


Our Polished Nickel electroplated finish repels rust and maintains its brilliance with regular maintenance. The drop-forged, non-corrosive solid brass fixture has an extra-thick, high-micron plating that's been carefully hand polished to a radiant sheen, offering protection even in wet environments.

## CARE INSTRUCTIONS:

- Wipe the fixture with a soft cloth after each use to prevent mineral build-up and water-spotting.
- Should spotting occur, remove it with warm water and a soft, damp cloth.
- Do not use harsh chemicals, abrasive cleansers, ammoniated products, rubbing alcohol, detergents, astringents or bleach-based cleaners. They may remove the protective coating and damage the finish.
- Do not allow soap scum or toothpaste to build up on the product.
- Use [Brass ProTech](#) on your hardware immediately after installation for added protection. Clean periodically by applying it with a soft, clean cloth to gently treat oxidation or remove surface spots. Once dry, remove the polish by gently rubbing with a soft, dry cloth to a high luster.
- If the finish begins to show hard water spots, try cleaning them with a solution of half water and half distilled white vinegar.

## SATIN NICKEL FINISH



Our hand-polished Satin Nickel finish is produced using the PVD (physical vapor deposition) process to create the most durable coating on the market. This rich finish provides long-lasting rust resistance for the non-corrosive, drop-forged solid brass fixture, even in wet environments.

## CARE INSTRUCTIONS:

- Wipe the fixture with a soft cloth after each use to prevent mineral build-up and water-spotting.
- Should spotting occur, remove it with warm water and a soft, damp cloth.
- Do not use harsh chemicals, abrasive cleansers, ammoniated products, rubbing alcohol, detergents, astringents or bleach-based cleaners. They may remove the protective coating and damage the finish.
- Do not allow soap scum or toothpaste to build up on the product. These will gradually wear away the protective coating.
- Use [Brass ProTech](#) on your hardware immediately after installation for added protection. Clean periodically by applying it with a soft, clean cloth to gently treat oxidation or remove surface spots. Once dry, remove the polish by gently rubbing with a soft, dry cloth to a high luster.
- If the finish begins to show hard water spots, try cleaning them with a solution of half water and half distilled white vinegar.

## POLISHED STAINLESS STEEL FINISH



Our Polished Stainless Steel electroplated finish repels rust and maintains its brilliance with simple care. The drop-forged, non-corrosive solid brass fixture has an extra-thick, high-micron plating that's been carefully hand polished to a radiant sheen.

## CARE INSTRUCTIONS:

- Wipe the fixture with a soft cloth after each use to prevent mineral build-up and water-spotting.
- Should spotting occur, remove it with warm water and a soft, damp cloth.
- Do not use harsh chemicals, abrasive cleansers, ammoniated products, rubbing alcohol, detergents, astringents or bleach-based cleaners. They may remove the protective coating and damage the finish.
- Do not allow soap scum or toothpaste to build up on the product.
- Use [Brass ProTech](#) on your hardware immediately after installation for added protection. Clean periodically by applying it with a soft, clean cloth to gently treat oxidation or remove surface spots. Once dry, remove the polish by gently rubbing with a soft, dry cloth to a high luster.
- If the finish begins to show hard water spots, try cleaning them with a solution of half water and half distilled white vinegar.

## SATIN STAINLESS STEEL FINISH



Our Satin Stainless Steel finish is produced using the PVD (physical vapor deposition) process to create the most durable finish available on today's market. This rich, hand-polished finish ensures long-lasting protection for the solid, non-corrosive, drop-forged brass fixture, even in wet environments.

## CARE INSTRUCTIONS:

- Wipe the fixture with a soft cloth after each use to prevent mineral build-up and water-spotting.
- Should spotting occur, remove it with warm water and a soft, damp cloth.
- Do not use harsh chemicals, abrasive cleansers, ammoniated products, rubbing alcohol, detergents, astringents or bleach-based cleaners. They may remove the protective coating and damage the finish.
- Do not allow soap scum or toothpaste to build up on the product. These will gradually wear away the protective coating.
- Use [Brass ProTech](#) on your hardware immediately after installation for added protection. Clean periodically by applying it with a soft, clean cloth to gently treat oxidation or remove surface spots. Once dry, remove the polish by gently rubbing with a soft, dry cloth to a high luster.
- If the finish begins to show hard water spots, try cleaning them with a solution of half water and half distilled white vinegar.

## BRONZE FINISH

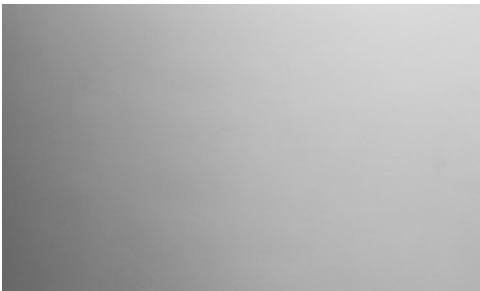


Our richly plated Bronze finish offers the uncompromising protection of a clear, hand-polished lacquer coat on top of a solid, non-corrosive, drop-forged brass fixture. This finish ensures durability, rust resistance and long-lasting shine.

## CARE INSTRUCTIONS:

- Wipe the fixture with a soft cloth after each use to prevent mineral build-up and water-spotting.
- Should spotting occur, remove it with warm water and a soft, damp cloth.
- Do not use harsh chemicals, abrasive cleansers, ammoniated products, rubbing alcohol, detergents, astringents or bleach-based cleaners. They may remove the protective coating and damage the finish.
- Do not allow soap scum or toothpaste to build up on the product. These will gradually wear away the protective coating.
- Use [Brass ProTech](#) on your hardware immediately after installation for added protection. Clean periodically by applying it with a soft, clean cloth to gently treat oxidation or remove surface spots. Once dry, remove the polish by gently rubbing with a soft, dry cloth to a high luster.
- If the finish begins to show hard water spots, try cleaning them with a solution of half water and half distilled white vinegar.

## POLISHED CHROME FINISH

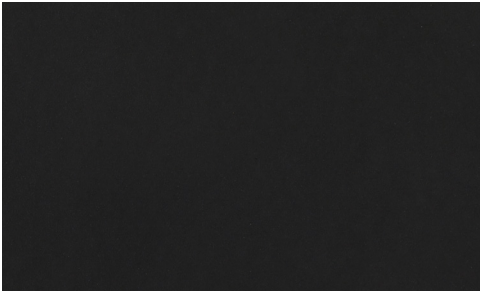


The extremely durable, electroplated Polished Chrome finish protects against corrosion and wear, resulting in a smooth, lustrous surface that retains its polish. The rich, hand-polished finish boasts extra-thick plating, which ensures that the solid, non-corrosive, drop-forged brass fixture is long-lasting even in high-use areas.

## CARE INSTRUCTIONS:

- Wipe the fixture with a soft cloth after each use to prevent mineral build-up and water-spotting.
- Should spotting occur, remove it with warm water and a soft, damp cloth.
- Do not use harsh chemicals, abrasive cleansers, ammoniated products, rubbing alcohol, detergents, astringents or bleach-based cleaners. They may remove the protective coating and damage the finish.
- Do not allow soap scum or toothpaste to build up on the product. These will gradually wear away the protective coating.
- Use [Brass ProTech](#) on your hardware immediately after installation for added protection. Clean periodically by applying it with a soft, clean cloth to gently treat oxidation or remove surface spots. Once dry, remove the polish by gently rubbing with a soft, dry cloth to a high luster.
- If the finish begins to show hard water spots, try cleaning them with a solution of half water and half distilled white vinegar.

## FLAT BLACK FINISH



Our Flat Black powder coat finish lends a bold, matte elegance to the solid, non-corrosive, drop-forged brass fixture while providing rust resistance and long-lasting protection. This durable finish retains its rich, hand-polished appeal even in wet environments.

### CARE INSTRUCTIONS:

- Wipe the fixture with a soft cloth after each use to prevent mineral build-up and water-spotting.
- Should spotting occur, remove it with warm water and a soft, damp cloth.
- Do not use harsh chemicals, abrasive cleansers, ammoniated products, rubbing alcohol, detergents, astringents or bleach-based cleaners. They may remove the protective coating and damage the finish.
- Do not allow soap scum or toothpaste to build up on the product.
- Use [Brass ProTech](#) on your hardware immediately after installation for added protection. Clean periodically by applying it with a soft, clean cloth to gently treat oxidation or remove surface spots. Once dry, remove the polish by gently rubbing with a soft, dry cloth to a high luster.
- If the finish begins to show hard water spots, try cleaning them with a solution of half water and half distilled white vinegar.