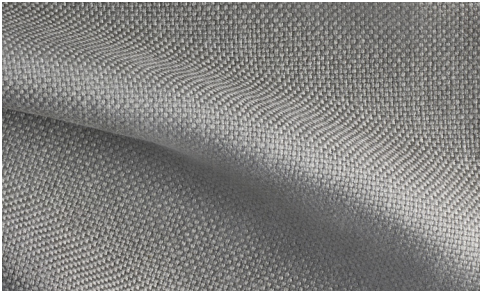
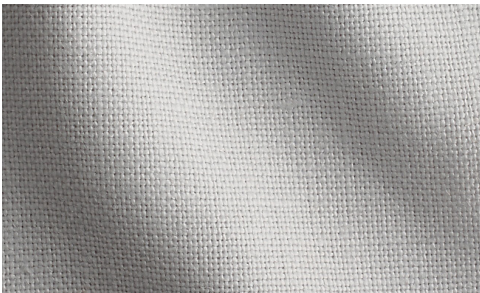


BELGIAN FLAX LINEN BASKET WEAVE



- Dry cleaning preferred.
- For spots, use solvent.
- Avoid rubbing the soiled area.

BELGIAN LINEN



- **Basic Care.** Spills will bead on fabrics with an Alta stain-repellent finish. Blot spills gently with a clean, dry, absorbent cloth. Allow the cloth to absorb the liquid.
- **Stubborn stains.** Dampen cloth with warm water and blot the spill gently. Do not rub. Frequently change and dampen the cloth surface with warm water and repeat blotting. Air dry.
- **Stubborn stains such as olive oil and ketchup, or stains that have dried on the fabric.** Dampen a cloth with warm water and place a drop of mild dish soap onto the cloth. Blot the stain and rotate the cloth surface to absorb the stain. Use a clean, damp cloth to blot and remove dish soap residue. Air dry.
- **Red wine and whiskey.** Dampen a cloth with warm water and place a drop of mild laundry detergent. Blot the stain and rotate the cloth surface to absorb the stain. Use a clean, damp cloth to blot and remove laundry detergent residue. Air dry.
- Avoid the use of bleach or harsh chemicals. Do not dry clean or steam iron.

BELGIAN LINEN BASKET WEAVE



- **Basic Care.** Spills will bead on fabrics with an Alta stain-repellent finish. Blot spills gently with a clean, dry, absorbent cloth. Allow the cloth to absorb the liquid.
- **Stubborn stains.** Dampen cloth with warm water and blot the spill gently. Do not rub. Frequently change and dampen the cloth surface with warm water and repeat blotting. Air dry.
- **Stubborn stains such as olive oil and ketchup, or stains that have dried on the fabric.** Dampen a cloth with warm water and place a drop of mild dish soap onto the cloth. Blot the stain and rotate the cloth surface to absorb the stain. Use a clean, damp cloth to blot and remove dish soap residue. Air dry.
- **Red wine and whiskey.** Dampen a cloth with warm water and place a drop of mild laundry detergent. Blot the stain and rotate the cloth surface to absorb the stain. Use a clean, damp cloth to blot and remove laundry detergent residue. Air dry.
- Avoid the use of bleach or harsh chemicals. Do not dry clean or steam iron.

BRUSHED BELGIAN FLAX LINEN COTTON



- Dry clean only.
- Do not use bleach, water or steam.
- To refresh, use a vacuum with a fabric brush to vacuum up and down and left and right.
- In case of spills, use a clean, lint-free cloth to blot up the liquid as soon as possible; avoid rubbing the soiled area.
- For dried or set stains, dry cleaning is recommended.

LAUNDERED BELGIAN LINEN



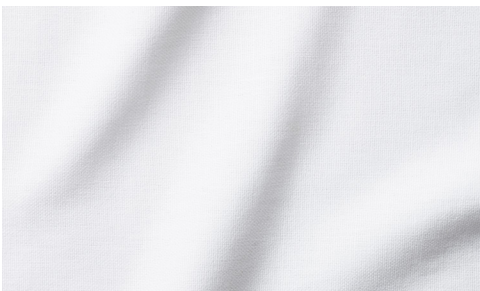
- Fully washable up to 100°F/40°C.
- May be dry cleaned.
- For spot cleaning, use a mild detergent and blot the stain with a dry, clean paper towel or cloth. Wet as needed and do not rub. Ironing may be needed to reactivate stain repellency.
- Do not use bleach.

STONEWASHED BELGIAN LINEN



- Fully washable up to 100°F/40°C.
- May be dry cleaned.
- For spot cleaning, use a mild detergent and blot the stain with a dry, clean paper towel or cloth. Wet as needed and do not rub. Ironing may be needed to reactivate stain repellency.
- Do not use bleach.

WASHED BELGIAN FLAX LINEN



- For oily stains, use solvent.
- For water-based spots, use water-based cleaners.
- For other stains, spot clean with natural soap.
- Slipcovers should be dry cleaned.
- If a slipcover is washed, put it back on the frame while the fabric is still partly damp to prevent excess shrinkage. Shrinkage can be reversed by re-wetting or by ironing with heavy steam.
- Do not use cleaners with whitening agents on dyed fabric.
- Do not use chlorine bleach.

HOLLAND & SHERRY WOOL TWILL



- Dry clean only.
- Do not use bleach, water or steam.
- Dab spills quickly with a soft cloth.

HOLLAND & SHERRY WOOL BOUCLÉ



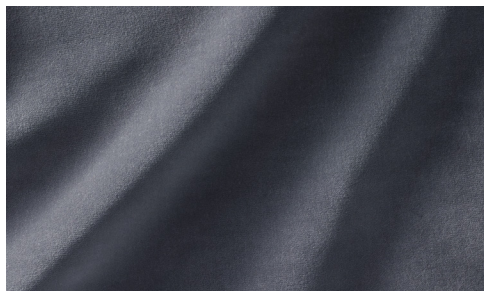
- Dry clean only.
- Do not use bleach, water or steam.
- Dab spills quickly with a soft cloth.

ITALIAN BOUCLÉ



- Dry clean only.
- Do not use bleach, water or steam.
- Spot clean only with a water-free dry-cleaning solvent.

ITALIAN COTTON VELVET



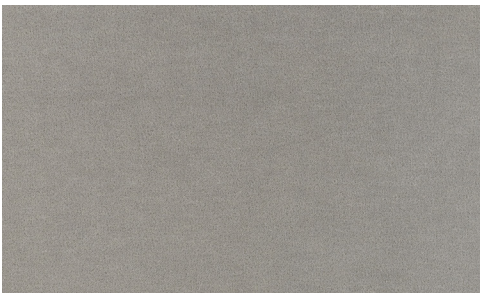
- Dab spills quickly with a soft cloth.
- Spot clean with warm water and mild soap; blot thoroughly to remove soap residue.
- Treat stains as follows:
 - For dry stains, use alcohol, then dry clean.
 - For oily stains, use solvent, then dry clean.
 - For red wine or lipstick, use alcohol, then dry clean.
 - For wet stains like fruit juice or ketchup, use soap and hot water, then dry clean.
- Vacuum with upholstery attachment to remove dust and dirt.
- If pile crushes due to normal use, brush gently with a stiff bristle brush to lift the pile.
- Steam or dry clean if needed.

ITALIAN MÉLANGE WEAVE



- Dry clean only.
- Do not use bleach, water or steam.
- Spot clean only with a water-free dry-cleaning solvent.

ITALIAN MERINO WOOL VELVET



- Dab spills quickly with a soft cloth.
- Treat stains as follows:
 - For dry stains, use alcohol, then dry clean.
 - For oily stains, use AVIO solvent, then dry clean.
 - For water-based stains, use soap and hot water, then dry clean.
- Vacuum with upholstery attachment to remove dust and dirt.
- Professional cleaning is recommended.

ITALIAN TEXTURED BOUCLÉ



- Professional dry cleaning recommended.
- Do not use bleach or steam.
- Vacuum with upholstery attachment to remove dust and dirt.
- For liquid spills, blot gently with a clean, dry, white, absorbent cloth. Do not rub the liquid in.
- For stubborn stains or stains that have dried on the fabric, dampen a cloth with warm water and place a drop of mild dish soap onto the cloth. Blot the stain and rotate the cloth surface to absorb the stain. Use a clean, damp cloth to blot and remove dish soap residue. Air dry.
- If stains persist, use a solvent-based cleaner.

PARÀ ITALIAN PERFORMANCE BASKET WEAVE



- Most spills can be blotted. Dab spills quickly with a soft cloth.
- Vacuum to remove dust and dirt.
- Spot-clean with a mild soap, rinse with lukewarm water and air dry.
- For stubborn stains, a solution of one part chlorine bleach to two parts water may be used. Rinse thoroughly.
- Dye lots may vary slightly.

LUSTROUS VELVET



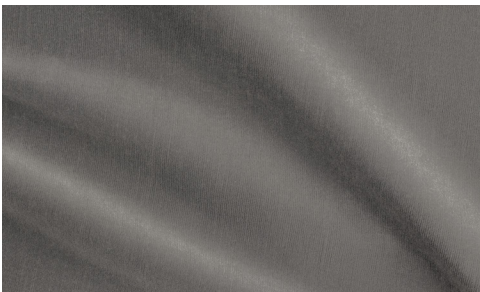
- To clean or refresh, use a vacuum with a fabric brush to vacuum up and down and left and right. Finish brushing in the direction of the pile.
- For wet stains, blot immediately with an absorbent paper towel or slightly damp cloth.
- For dry stains, scrape away any debris from the surface with a dull knife or spoon. Using a sponge or damp cloth and a solution of one part dishwashing detergent to ten parts water, gently blot the stain, working your way in a circle from the outside of the stain to the middle. Repeat the process as necessary until the stain is removed.
- After removing a stain, pat dry with a clean lint-free cloth; as the velvet dries, brush gently in the direction of the pile. To accelerate the drying process, brush while using a hairdryer on the warm setting about 12 inches away from the velvet.
- For slight bruises or crush marks, steam from approximately 12 inches away from pile and brush with a fabric brush in the direction of the pile.
- Do not use any cleaning product that contains bleach.
- For stubborn stains, we recommend professional dry cleaning.

ORIGINAL LUSTROUS VELVET



- Clean with a water-based product, such as a little foam from a mild detergent or a non-solvent upholstery shampoo.
- Use plain white towels when cleaning so you do not transfer any dye onto the fabric.
- Do not use bleach.

VINTAGE VELVET



- To clean or refresh, use a vacuum with a fabric brush to vacuum up and down and left and right. Finish brushing in the direction of the pile.
- For wet stains, blot immediately with an absorbent paper towel or slightly damp cloth.
- For dry stains, scrape away any debris from the surface with a dull knife or spoon. Using a sponge or damp cloth and a solution of one part dishwashing detergent to ten parts water, gently blot the stain, working your way in a circle from the outside of the stain to the middle. Repeat the process as necessary until the stain is removed.
- After removing a stain, pat dry with a clean lint-free cloth; as the velvet dries, brush gently in the direction of the pile. To accelerate the drying process, brush while using a hairdryer on the warm setting about 12 inches away from the velvet.
- For slight bruises or crush marks, steam from approximately 12 inches away from pile and brush with a fabric brush in the direction of the pile.
- Do not use any cleaning product that contains bleach.
- For stubborn stains, we recommend professional dry cleaning.

ITALIAN FAILLE



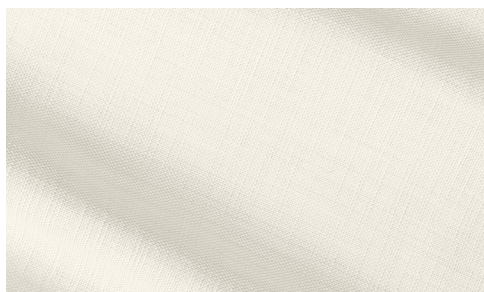
- Professional dry cleaning recommended.
- For oily stains, use solvent.
- For other stains, spot clean with a damp cotton cloth and natural soap.
- Do not use bleach.

ITALIAN TEXTURED WEAVE



- Professional dry cleaning recommended.
- For oily stains, use solvent.
- For other stains, spot clean with a damp cotton cloth and natural soap.
- Do not use bleach.

PERENNIALS® PERFORMANCE CLASSIC LINEN WEAVE



- Clean with natural soap in lukewarm water. Cleaners such as Formula 409® have also been used with success. Sponge briskly and rinse thoroughly with clean water to remove dirt. Air dry.
- To clean exterior cushions, flush with water and allow to air dry without removing the cover. Repeated removal of the cover may eventually break down the seams and distort the fabric.
- For stubborn stains, a solution of one part chlorine bleach to two parts water may be used. Rinse thoroughly.
- Professional cleaning is recommended for interior cushions.
- Repeated washing of Perennials® Performance fabrics may reduce the effectiveness of the soil-resistant finish.



PERENNIALS
FIBER DESIGN
THIS MARK ASSURES GENUINE PERENNIALS
100% SOLUTION-DYED ACRYLIC TECHNOLOGY

PERENNIALS® PERFORMANCE TEXTURED LINEN SOLID

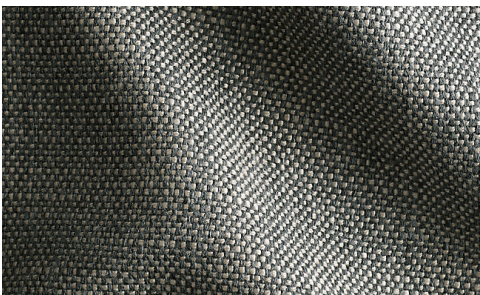


- Clean with natural soap in lukewarm water. Cleaners such as Formula 409® have also been used with success. Sponge briskly and rinse thoroughly with clean water to remove dirt. Air dry.
- To clean exterior cushions, flush with water and allow to air dry without removing the cover. Repeated removal of the cover may eventually break down the seams and distort the fabric.
- For stubborn stains, a solution of one part chlorine bleach to two parts water may be used. Rinse thoroughly.
- Professional cleaning is recommended for interior cushions.
- Repeated washing of Perennials® Performance fabrics may reduce the effectiveness of the soil-resistant finish.



PERENNIALS
FIBER DESIGN
THIS MARK ASSURES GENUINE PERENNIALS
100% SOLUTION-DYED ACRYLIC TECHNOLOGY

PERENNIALS® PERFORMANCE TEXTURED LINEN WEAVE



- Clean with natural soap in lukewarm water. Cleaners such as Formula 409® have also been used with success. Sponge briskly and rinse thoroughly with clean water to remove dirt. Air dry.
- To clean exterior cushions, flush with water and allow to air dry without removing the cover. Repeated removal of the cover may eventually break down the seams and distort the fabric.
- For stubborn stains, a solution of one part chlorine bleach to two parts water may be used. Rinse thoroughly.
- Professional cleaning is recommended for interior cushions.
- Repeated washing may reduce the effectiveness of the soil-resistant finish.



PERENNIALS
FIBER DESIGN
THIS MARK ASSURES GENUINE PERENNIALS
100% SOLUTION-DYED ACRYLIC TECHNOLOGY

PERENNIALS® PERFORMANCE TEXTURED TWO-TONE LINEN



- Clean with natural soap in lukewarm water. Cleaners such as Formula 409® have also been used with success. Sponge briskly and rinse thoroughly with clean water to remove dirt. Air dry.
- To clean exterior cushions, flush with water and allow to air dry without removing the cover. Repeated removal of the cover may eventually break down the seams and distort the fabric.
- For stubborn stains, a solution of one part chlorine bleach to two parts water may be used. Rinse thoroughly.
- Professional cleaning is recommended for interior cushions.
- Repeated washing of Perennials® Performance fabrics may reduce the effectiveness of the soil-resistant finish.



PERENNIALS
FIBER DESIGN
THIS MARK ASSURES GENUINE PERENNIALS
100% SOLUTION-DYED ACRYLIC TECHNOLOGY