

RESTORATION HARDWARE

FRENCH EMPIRE COLLECTION



65\"W Panel Media Console



82\"W Panel Media Console



100\"W Panel Media Console



100\"W Glass Media Console

Panel Media Console

65\"W x 17½\"D x 32\"H
82\"W x 17½\"D x 32\"H
100\"W x 22\"D x 32\"H

Glass Media Console

60\"W x 22\"D x 32\"H
80\"W x 22\"D x 32\"H
100\"W x 22\"D x 32\"H

📍 **Unlimited Furniture Delivery** at a low flat rate based on delivery area. See a store associate or our website for details.

See our website for pricing and additional views.

FEATURES

Bun feet and intricate carvings of Second Empire furnishings are characteristic of the style that developed during the reign of Emperor Napoleon III. Our media console is an homage to this period – a mid-19th-century stylistic alignment with France's glorious past. Carefully hand-finished using an intensive multistep finishing process, which results in a weathered, distressed patina.

- Artisan-crafted by furniture maker Geoffrey Hawkes
- Crafted of solid hardwood
- Intensive multistep finishing process results in a weathered, distressed patina
- Media console has 6 adjustable shelves and wire management in the middle unit

- Edged with ornate hand carving
- Built with mortise-and-tenon joinery and bun feet
- Brass knobs
- Features 4 drawers and adjustable shelves
- Available in 3 wood finishes

CARE

Wipe with a soft, dry cloth.

SWATCHES

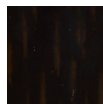
Wood swatches available for purchase online, in stores or by calling 800.816.0901.



Antiqued
Natural



Antiqued
Coffee



Antiqued
Black