

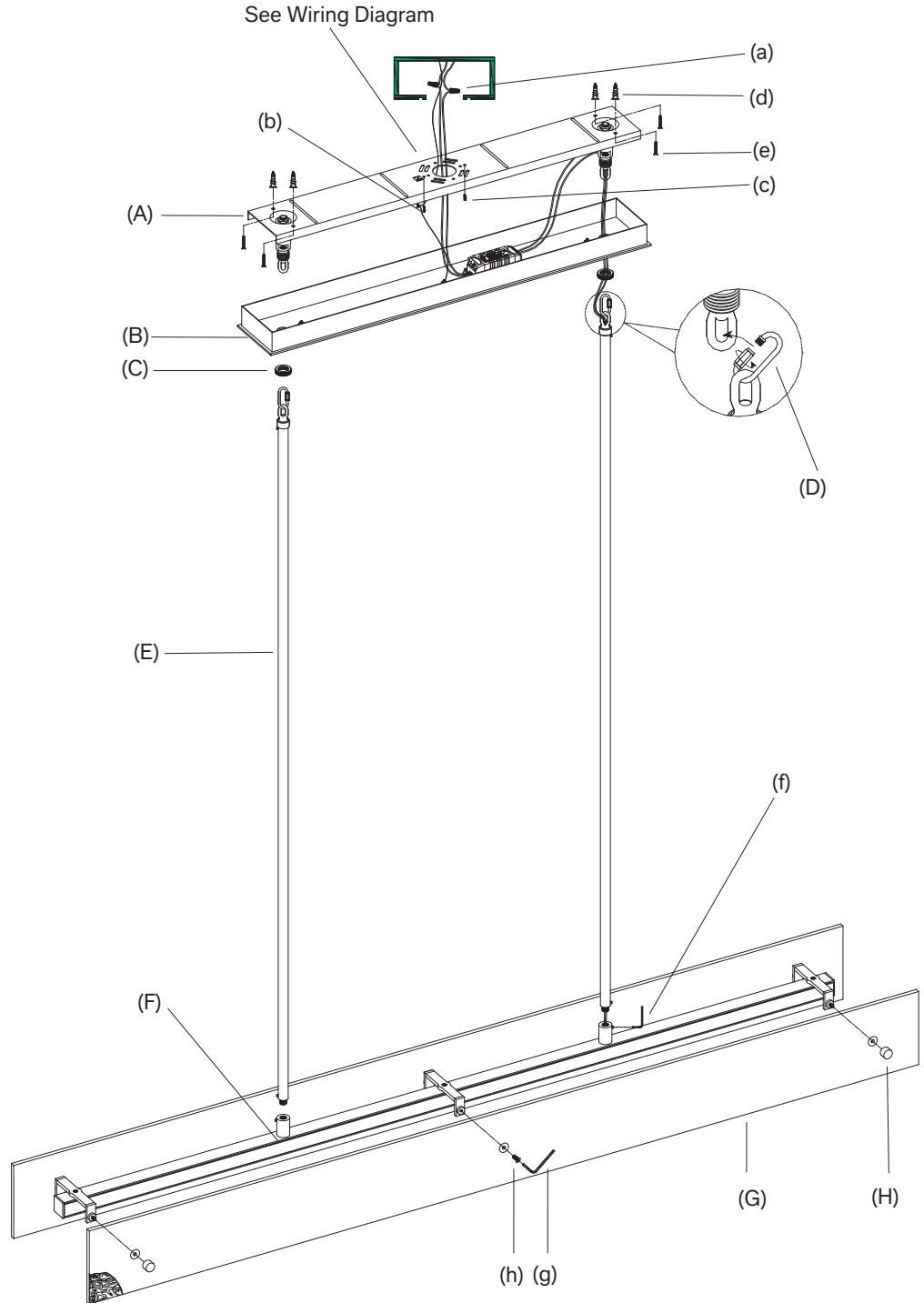
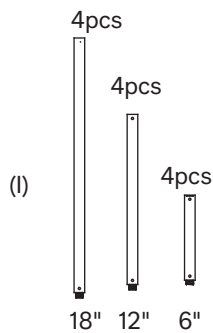
VOUVRAY LINEAR CHANDELIER 72"

PARTS ENCLOSED

- (A) Mounting Plate (1)
- (B) Canopy (1)
- (C) Rings (2)
- (D) Links (2)
- (E) Rods (2)
- (F) Frame (1)
- (G) Diffusers (2)
- (H) Finials (4)
- (I) Extension Tubes (12)

HARDWARE INCLUDED

- (a) Plastic Wire Connectors (5)
- (b) Green Ground Screw (1)
- (c) Mounting Screws (2)
- (d) Toggles (4)
- (e) Toggle Screws (4)
- (f) Rod Allen Wrench (1)
- (g) Diffuser Allen Wrench (1)
- (h) Diffuser Screws (2)



VOUVRAY LINEAR CHANDELIER 72"

IMPORTANT SAFETY INSTRUCTIONS

Use an authorized and certified electrician for consultation and installation. Electrician must be familiar with commercial-type applications of very heavy chandeliers.

The ceiling must have at least the capacity of 5 times the weight of the chandelier. For this fixture, a ceiling capacity of at least 500 lb.(227 kg) is required.

WARNINGS

All wires are connected. When unpacking, be careful not to pull wires, as a bad connection may result. Do not connect electricity until your fixture is fully assembled. Do not touch or look directly at the LED strip when fixture is illuminated. Keep flammable materials away from lit LED strip.

THIS PRODUCT IS NOT A TOY AND HAS NO PLAY VALUE.



WARNING: STRANGULATION HAZARD

Keep cord at least 3 feet away from cribs, bassinets, and toddler beds. Keep out of reach of children under 3 years of age.

ASSEMBLY & INSTALLATION

SHUT OFF THE MAIN ELECTRICAL SUPPLY FROM THE FUSE BOX OR CIRCUIT BREAKER PANEL.

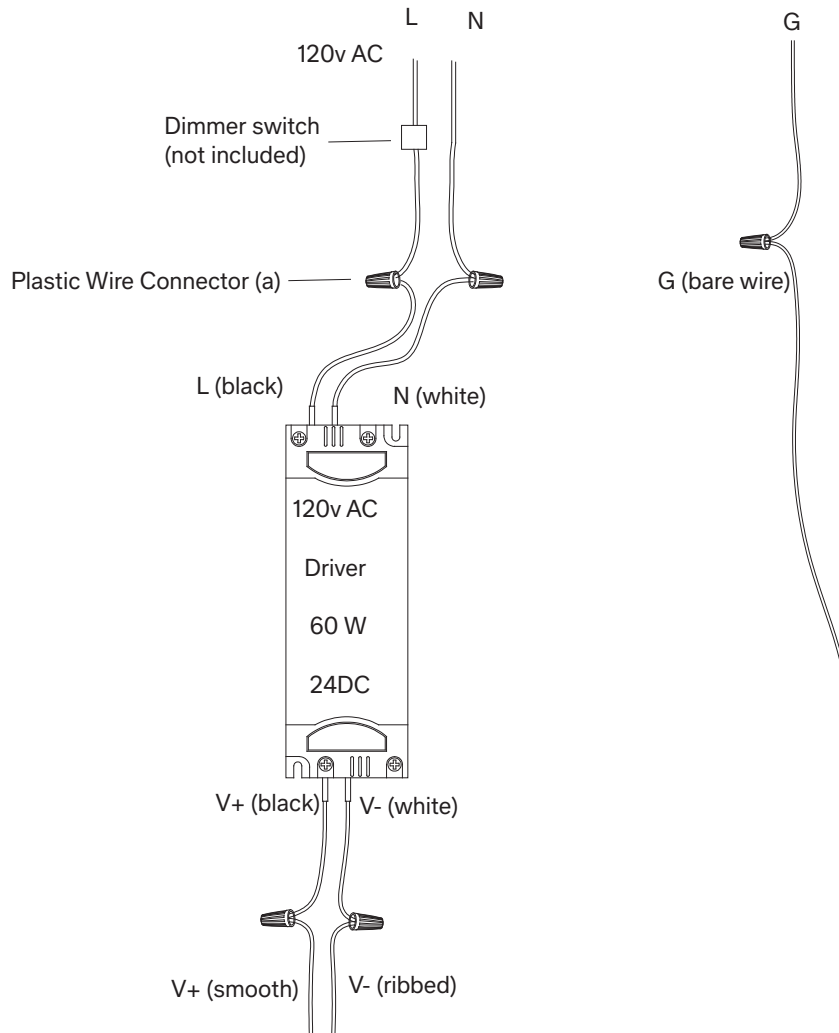
1. Carefully remove all parts from the box and remove all plastic coverings.
2. Put the Rods (E) onto the Frame (F) and turn clockwise until the threading fully screws into the frame. Secure the Rods (E) using Rod Allen Wrench (f) provided. If needed, you can attach the Extension Tubes (I).
3. Attach the Diffusers (G) to the Frame (F) and fully tighten using the finials (H). Screw the Diffuser Screws (h) into the Frame (F) using Diffuser Allen Wrench (g).
4. Mark the location of the mounting holes on the ceiling using a pencil. Then using the marks as a guide, drill holes for the Toggles (d). Fully screw the Toggles (d) into the ceiling until flush with the ceiling with a screwdriver.

5. Attach the ground wire from the fixture to the ground junction box wire from the outlet box (usually green or bare wire) with a Plastic Wire Connector (a) and wrap the connection with electrical tape. Or wrap the fixture's ground wire around the Green Ground Screw (b) and affix the Green Ground Screw to the Mounting Plate (A).
6. Refer to the wiring diagram on following page for accurate wire connections. Cut out the redundant wires after the professional installation. Keep proper ventilation around the driver, and do not stack any object on it.
7. Fasten Mounting Plate (A) onto the ceiling outlet box using two Mounting Screws (c). Screw the Toggle Screws (e) into the Toggles (d). Tighten with a screwdriver.
8. Connect the mounting plate loops and the rod loops using the Links (D). Fully tighten with the link nuts.
9. Attach the Canopy (B) to the Mounting Plate (A) using the Rings (c) and fully tighten.
10. Restore power to the junction box and test fixture. Installation is complete.

CARE INSTRUCTIONS

Do not use polishes or cleaners on the fixture. Wipe clean with a soft, dry cloth.

Wiring Diagram



One suite wire is from the mounting plate

Note :

1. THIS DRIVER IS DESIGNED TO BE INSTALLED WITH THE DIMMER. USE RECOMMENDED LUTRON DIMMER SWITCH: SKYLARK S-600, S600P, SF-10P, SF-12P-277, CREDENZA TT300, DVF-103P-277.
2. Connect above wires with the Plastic Wire Connectors (a) and wrap the connection with electrical tape.
3. DO NOT test or install with an ON/OFF switch and/or without an attached load.