



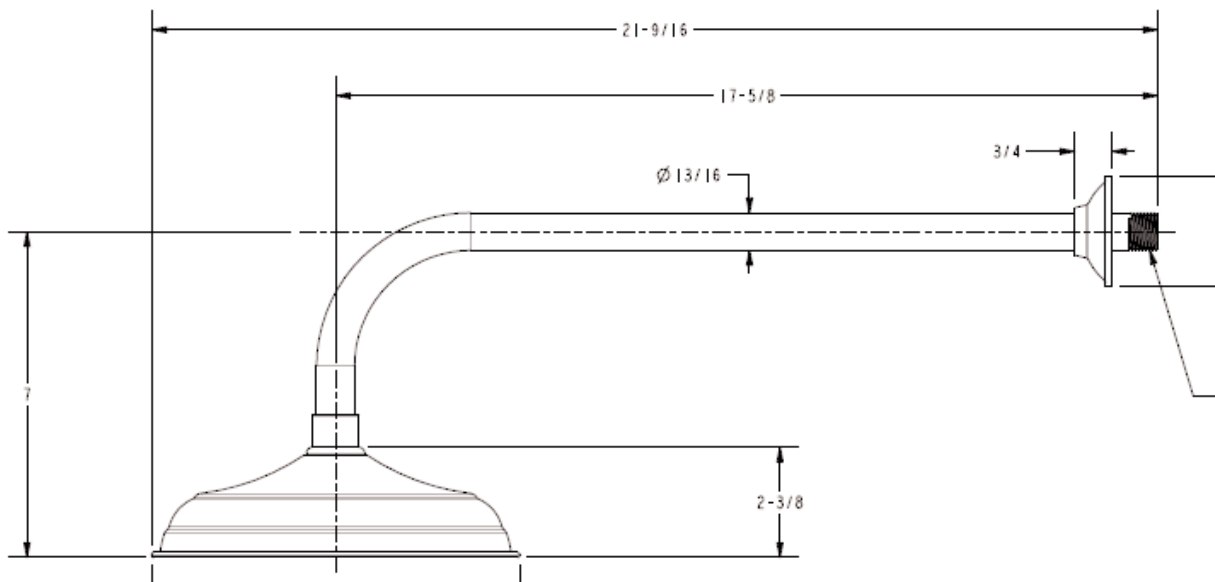
# INSTALLATION INSTRUCTIONS



8" DIAMETER WALL MOUNTED  
SHOWERHEAD

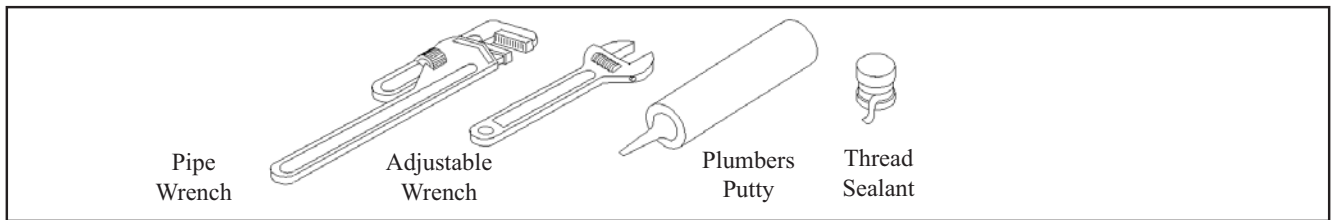
MODEL 23600046 (RH-2091-12W)

# Restoration Hardware Showerhead Specification Diagram



All Threaded Connections are  $\frac{1}{2}$ " NPT  
Dimensions are in Inches and Approximation of a Typical Installation

## Common tools needed:

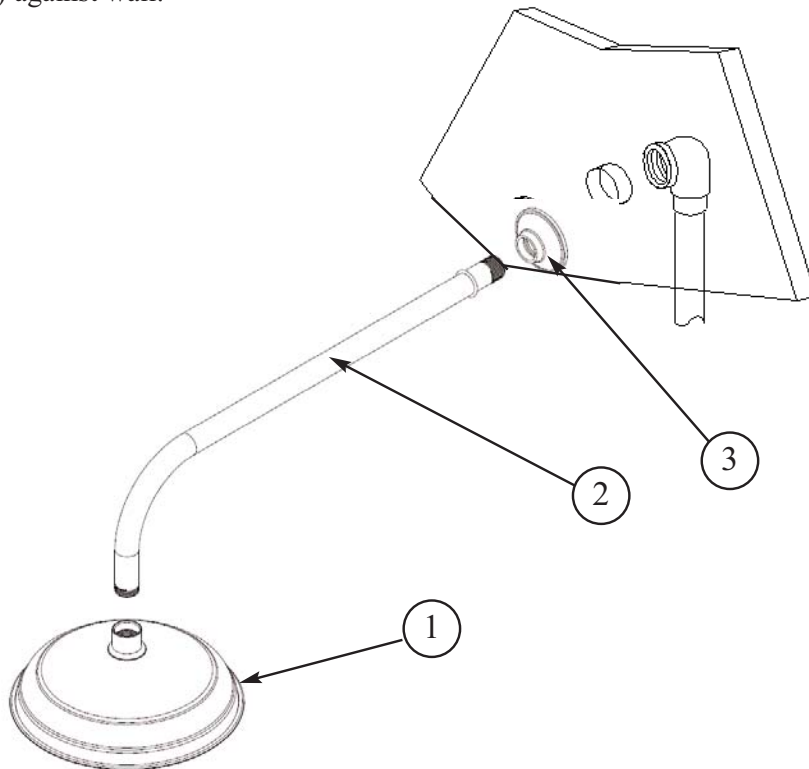


## Installation Instructions

We Recommend Installation by a Licensed Plumbing Professional

### Showerhead Installation

- Slide shower ARM (2) though the FLANGE (3).
- Apply thread sealant to both ends of the ARM (2) and thread into fitting inside finished wall.
- Open valve and flush shower line of debris.
- Attach SHOWERHEAD (1) to end of ARM (2).
- Turn on water supply, check for leaks and make any final adjustments required.
- Slide FLANGE (3) against wall.



## Care and Cleaning

The lustrous finish on your Restoration Hardware Bathware fixture should be treated with care. Improper handling or cleaning can damage the surface of any metal finish. Use a soft cloth to wipe clean. Avoid harsh abrasive cleaner. Water contains lime and other mineral deposits that will be left on the surface after the water has evaporated. You can prevent these deposits from forming by always wiping the fixture dry immediately after use.

## Technical Support and Customer Service

For technical support in the installation of your Restoration Hardware Bathware fixture, please call 1-866-417-5207 weekdays between the hours of 7:00am and 4:00pm PST.

For other questions regarding your order, to order additional components of the Restoration Hardware Bathware Collection, to order replacement parts, or to address warranty issues, please contact Restoration Hardware Customer Service at 1-877-747-4671.