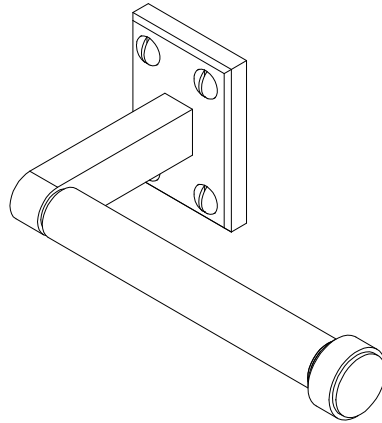


# RH

## LAMBETH TISSUE HOLDER INSTALLATION INSTRUCTIONS

---



### CLEANING INSTRUCTIONS

To maintain and protect the luster of all products, clean with a soft, damp cloth only.

Tools Required: Phillips screwdriver, hammer, drill and pencil.

### MOUNTING INSTRUCTIONS

1. Position tissue holder in desired location on wall, lightly mark outline of both cover plate.
2. Mark location of wall anchor installation. Remove mounting bracket from wall. Position anchor and gently tap anchor into wall until cap prongs are embedded in wall and cap is snug against surface. Turn screw clockwise, pressing firmly to prevent anchor from rotating. Tighten screw until resistance is felt, this will fully expand the anchor. Turn screw counterclockwise to remove screw and anchor will remain embedded in wall.
3. Place the mounting bracket over the anchor and reinsert screws. Place fixture over mounting bracket and tighten set screw.
4. If necessary, loosen wall mounting screws and adjust mounting bracket to obtain proper horizontal alignment on wall. Retighten screws and remount cover plate.

