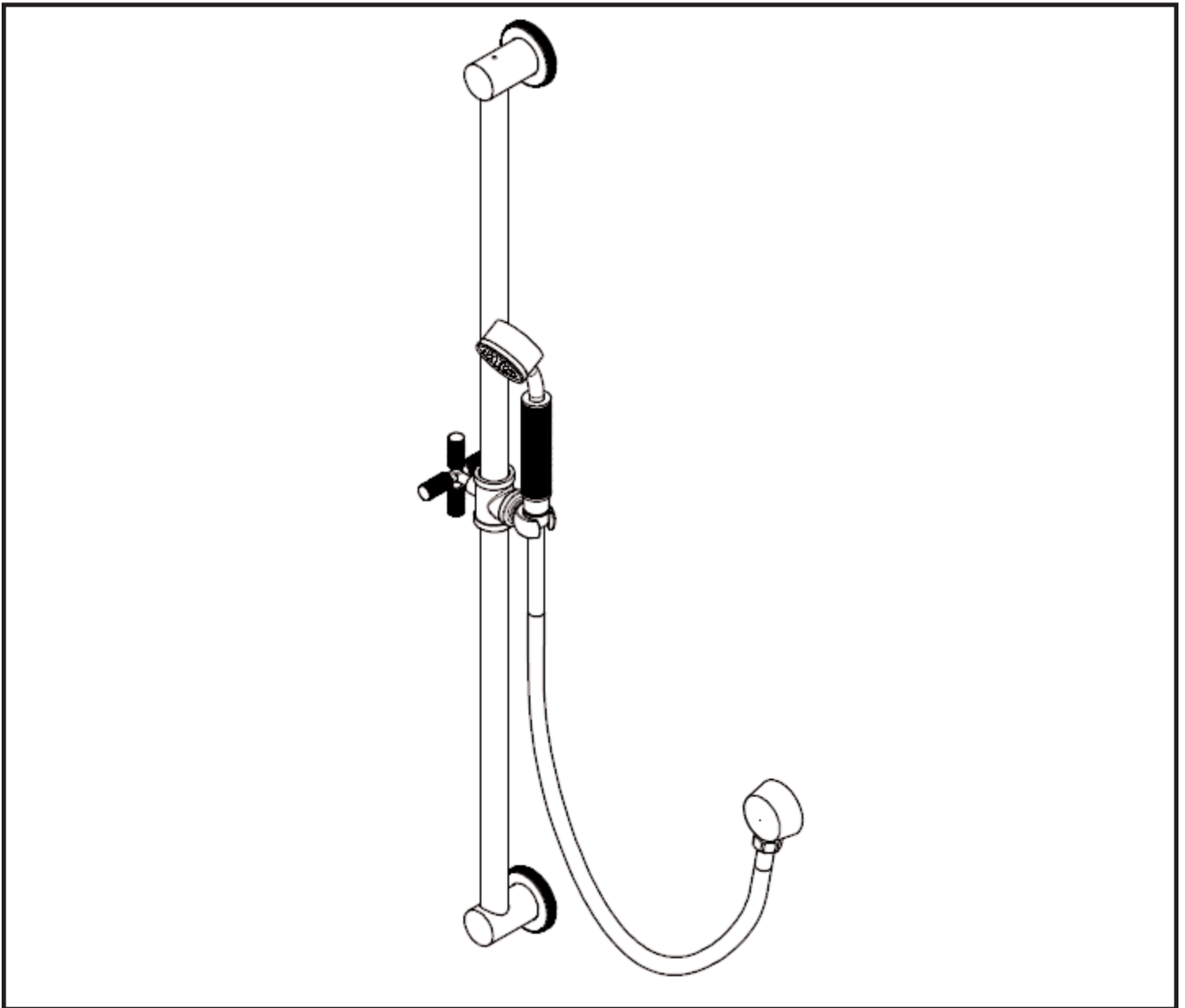


# RH

RESTORATION HARDWARE

## INSTALLATION INSTRUCTIONS



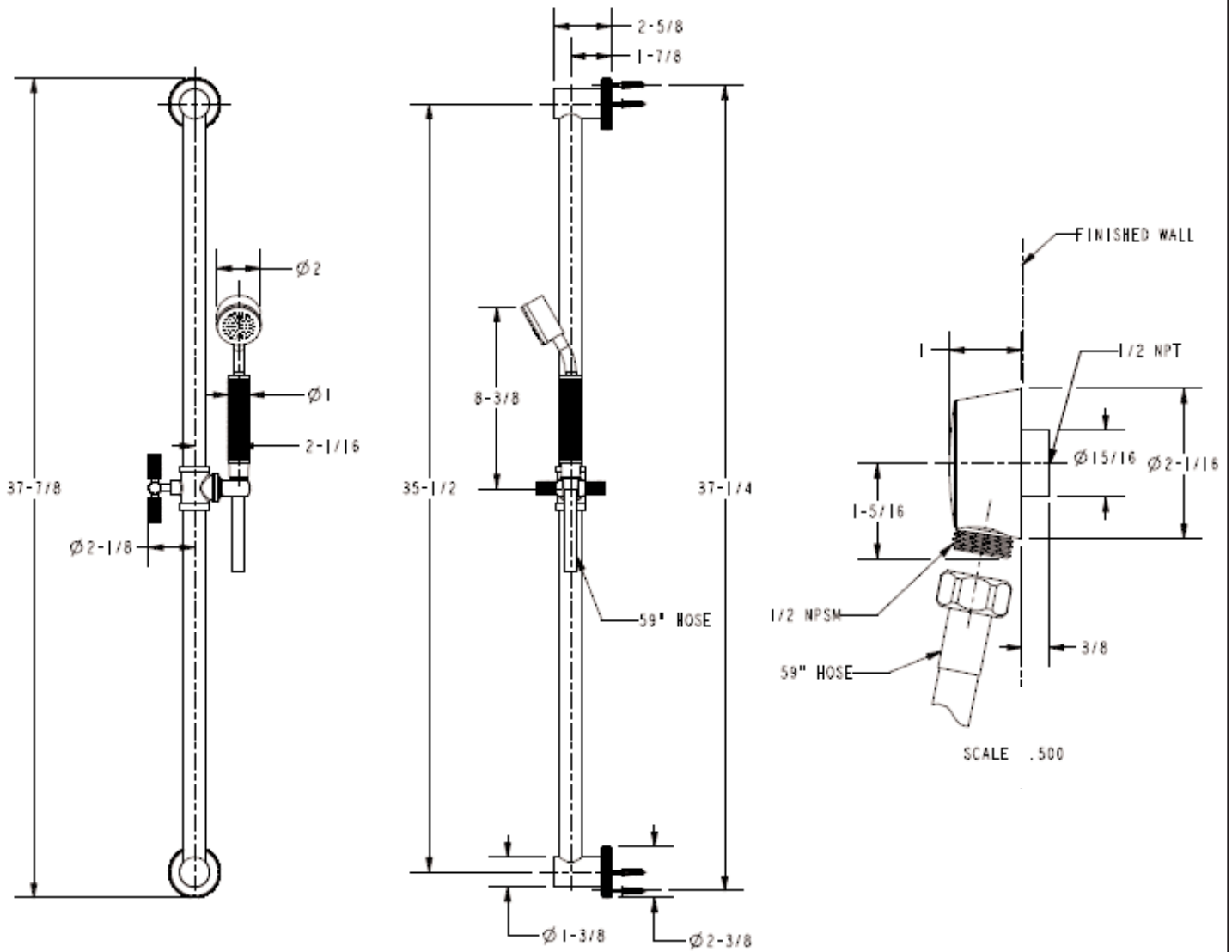
HANDHELD SHOWER W/ SLIDEBAR

MODEL: KNURLED

(RH-8942)

# Restoration Hardware

## Hand Shower Kit Specification Diagram



**All Threaded Connections are 1/2" NPT**

Dimensions are in Inches and Approximation of a Typical Installation

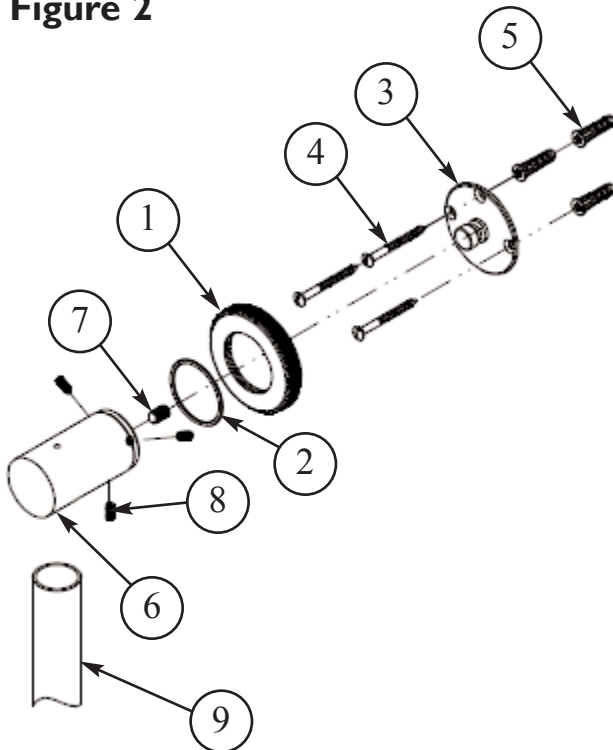
# Installation Instructions

**We recommended Installation by a Licensed Plumbing Professional**

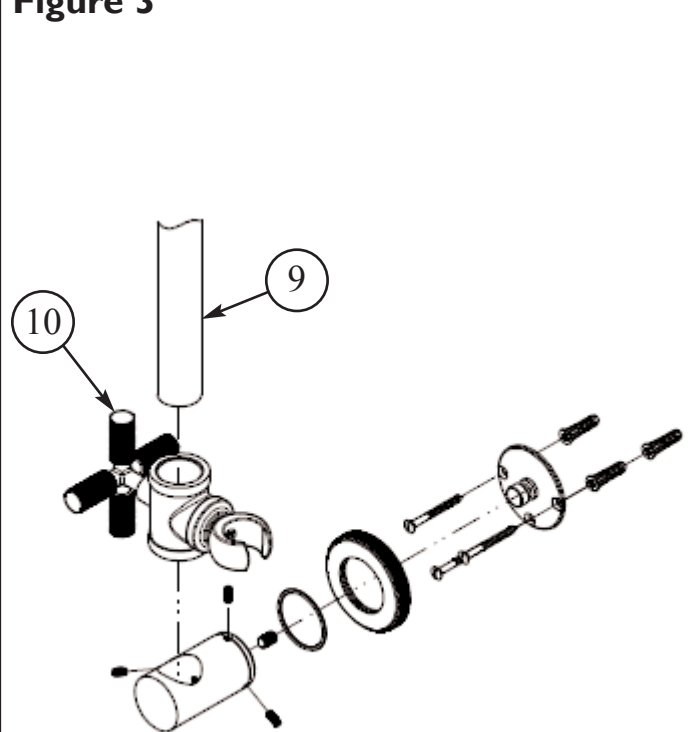
## 1. Installation of Slide Bar Assembly

- Locate the desired position of slide bar on finished wall. See *page 2 specification diagram*.
- Mark wall and drill 1/4" hole for WALL ANCHORS (5) to dimension 35-1/2" and 37-1/4" shown in specification diagram.
- Place SLIDE BAR (9) into POST (6). Use SET SCREW (7) to secure POST (6) as shown in **Figure 2**.
- Place POST (6) onto ESCUTCHEON (1) with O-RING (2) underneath, insert SCREW (8) and securely tighten into BRACKET (3) as shown in **Figure 2**.
- Slide and lock SLIDE BAR HOLDER ASM - CONTEMP (10) unto SLIDE BAR (9) as shown in **Figure 3**.
- Repeat the above steps to the other end of POST (6), ESCUTCHEON (1) with O-RING (2), and SCREW (8), BRACKET (3).

**Figure 2**

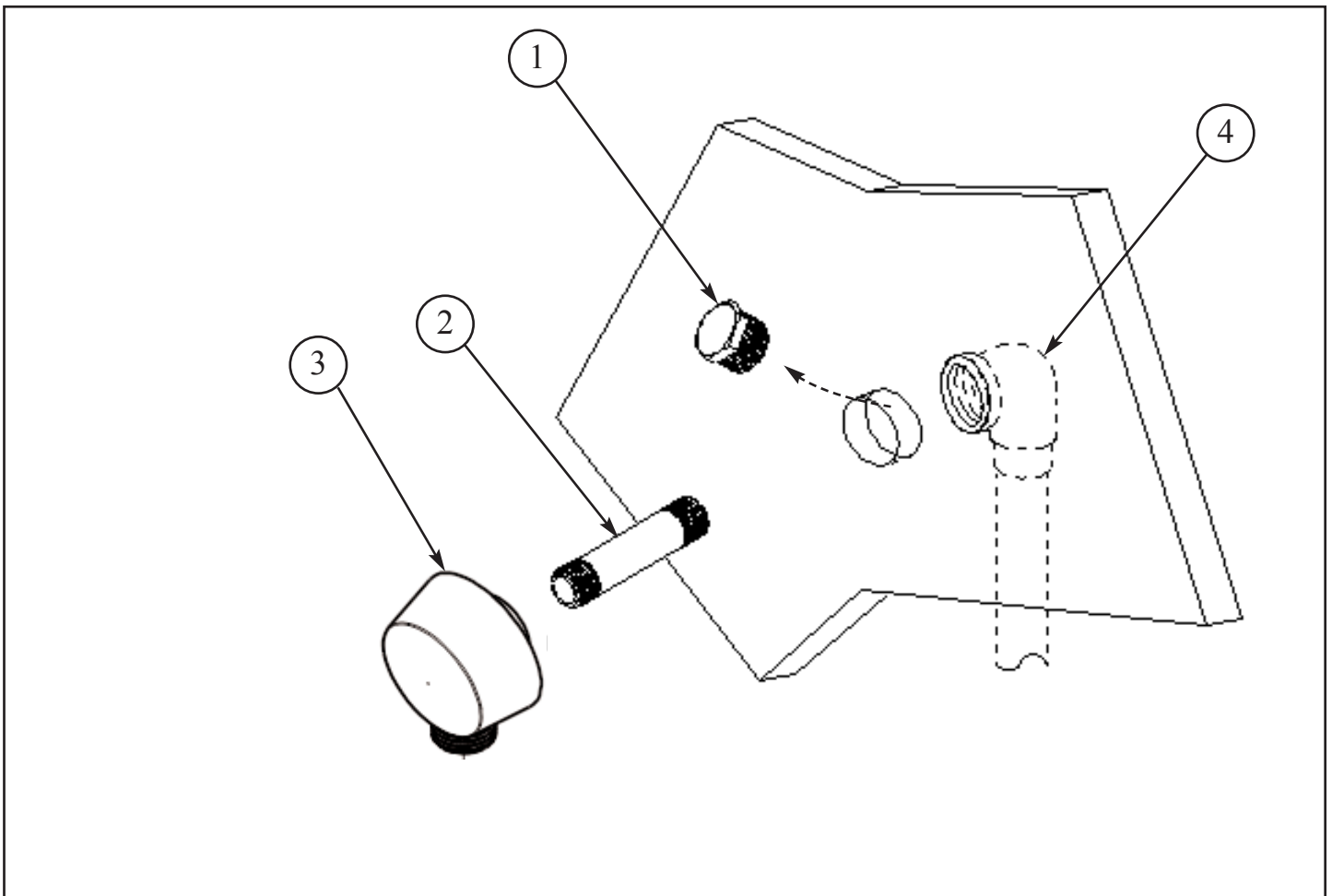


**Figure 3**



## 2. Supply Elbow Installation

- Remove TEMPORARY PLUG (1) from fitting in wall.
- Apply thread sealant to both ends of appropriate length NIPPLE (2), (not supplied).
- Tighten NIPPLE (2) onto SUPPLY FITTING (4).
- Tighten SUPPLY ELBOW (3) onto NIPPLE (2).



## 3. Hand Shower & Hose Installation

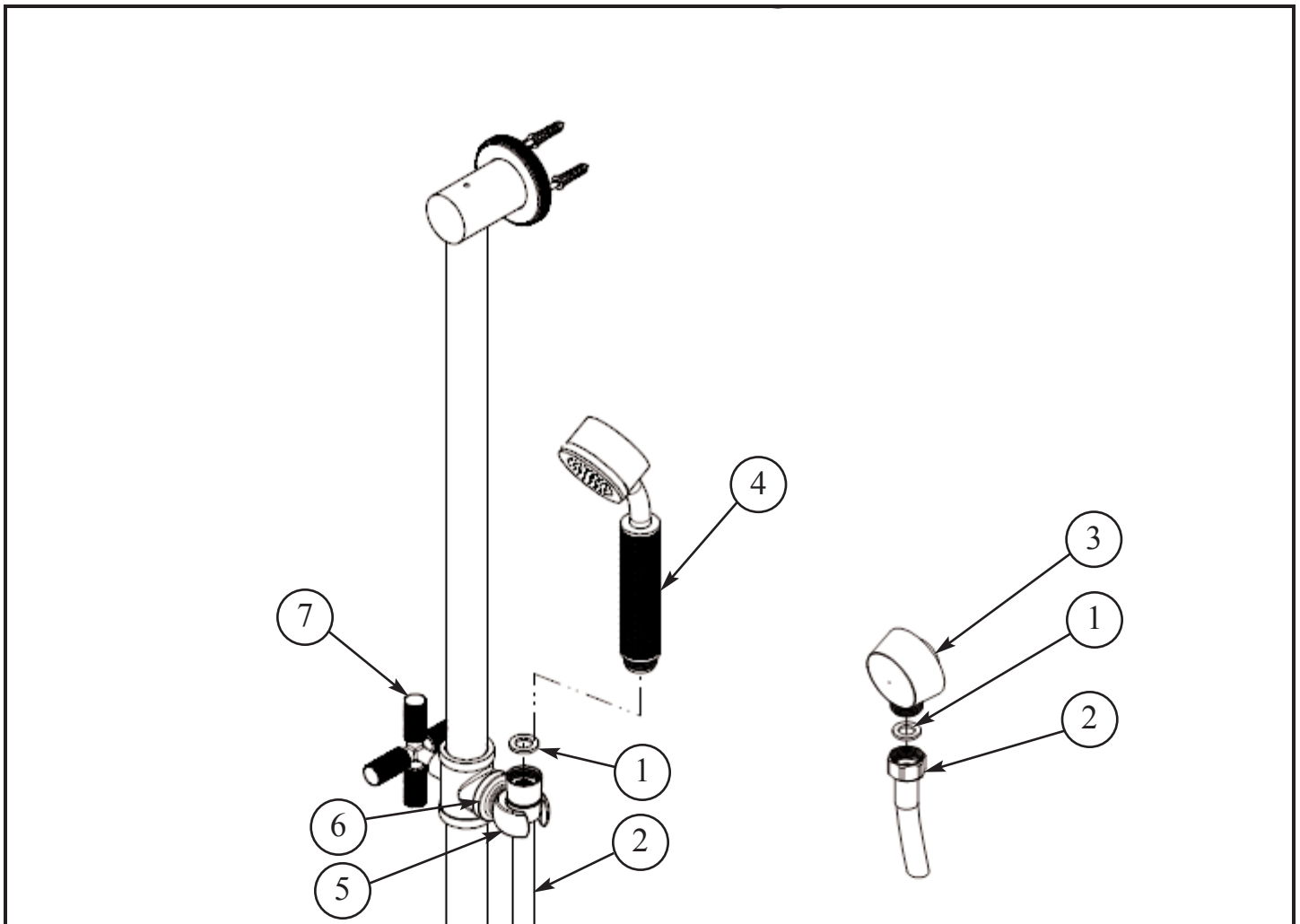
- Place RUBBER WASHER (1) into both ends of HOSE (2).
- Attach the hex end of HOSE (2) onto SUPPLY ELBOW (3).
- Attach HAND SHOWER (4) onto conical end of HOSE (2).
- Place HAND SHOWER (4) into SLIDE BAR HOLDER (5).

## 4. Adjusting Hand Shower on Slide Bar

- FLANGE, CONTEMP (6) is pre-tightened at the factory. To adjust HAND SHOWER (4) into a desired position, insert HAND SHOWER (4) into HOLDER (5) then rotate accordingly.

Note : If HOLDER (5) becomes too loose to hold HAND SHOWER (4) in place, sufficiently tighten the FLANGE, CONTEMP (6).

- Loosen HANDLE (7) and move HOLDER (5) to desired vertical location. Retighten HANDLE (7) to keep HOLDER (5) in place.



## Care and Cleaning

The lustrous finish on your Restoration Hardware Bathware fixture should be treated with care. Improper handling or cleaning can damage the surface of any metal finish. Use a soft cloth to wipe clean. Avoid harsh abrasive cleaners. Water contains lime and other mineral deposits that will be left on the surface after the water has evaporated. You can prevent these deposits from forming by always wiping the fixture dry immediately after use.

## Technical Support and Customer Service

For technical support in the installation of your Restoration Hardware Bathware fixture, please call 1-866-417-5207 weekdays between the hours of 7:00am and 4:00pm PST.

For other questions regarding your order, to order additional components of the Restoration Hardware Bathware Collection, to order replacement parts, or to address warranty issues, please contact Restoration Hardware Customer Service at 1-877-747-4671.