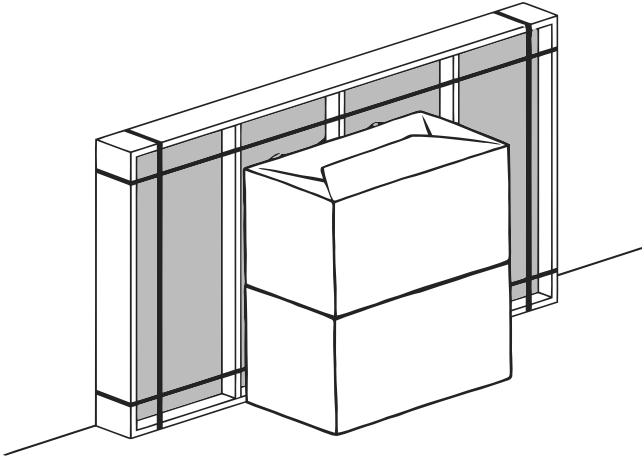
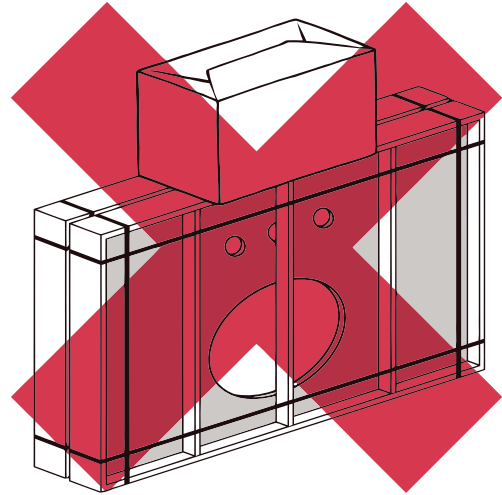


### CRATE STORAGE



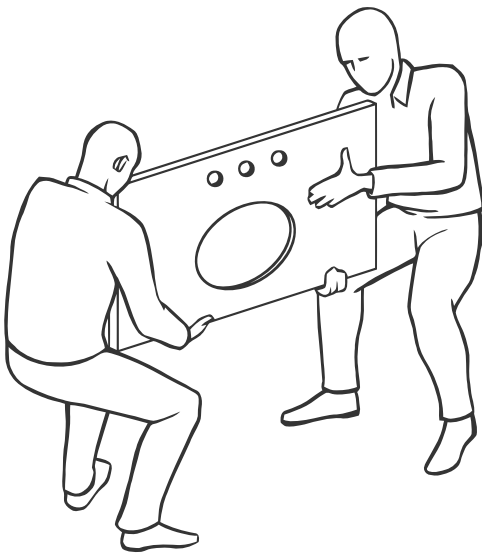
- Keep Stone Top in its crate until installation
- Store crate vertically in a safe location



- Do not stack anything on top of crate

---

### STONE TOP TRANSPORT

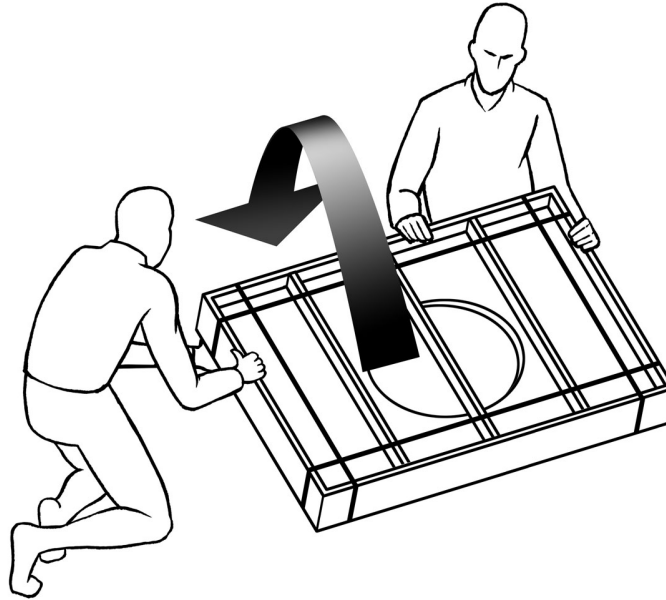


- When moving Stone Top always use a two-person crew.
- Always carry Stone Top vertically.

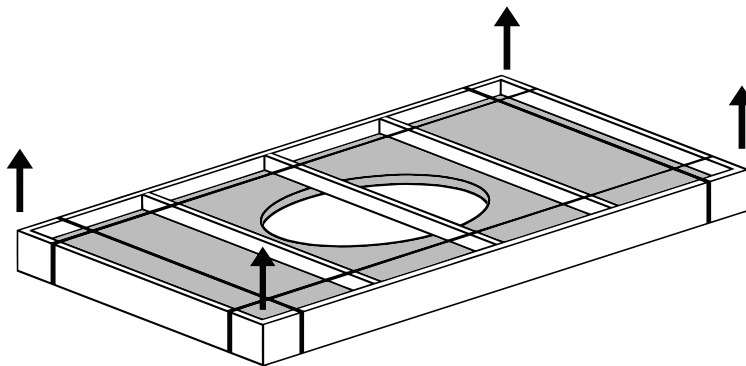


- Do not carry Stone Top horizontally as it increases the risk of breakage or cracking.

## STONE TOP UNPACKING



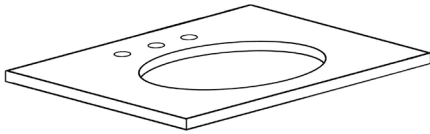
- Carefully, without allowing any freefall, rotate the crate from vertical to flat.



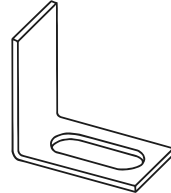
- Remove metal bands, unscrew the slats or lid, and lift the Stone Top out of the crate.

### PARTS LIST

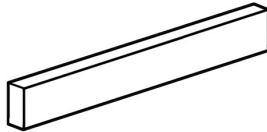
A. Stone Top (Oval or Rectangular)



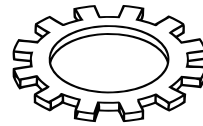
E. Mounting Bracket (x4)



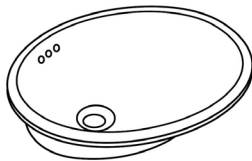
B. Backsplash



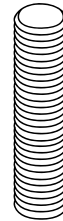
F. Lock Washer (x4)



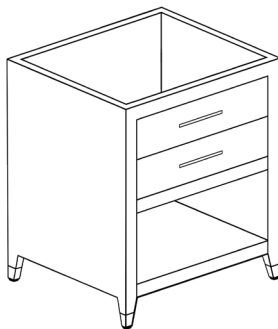
C. Basin



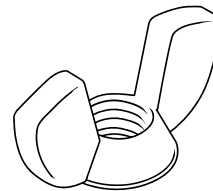
G Threaded Rod (x4)



D. Washstand Base



H. Wing Nut (x4)





## GRAYDON SHAGREEN POWDER WASHSTAND

---

### STONE TOP INSPECTION

- Before you begin, inspect the Stone Top for cracks and defects. If defects are detected, do not install and please call 800-762-1005. If no defects are detected, clean Stone Top with a soft cloth.

---

### TOOL AND MATERIAL REQUIREMENTS

- Flat, non-abrasive work surface (blanket or smooth cardboard)
- Sealant
- Carpenter's level

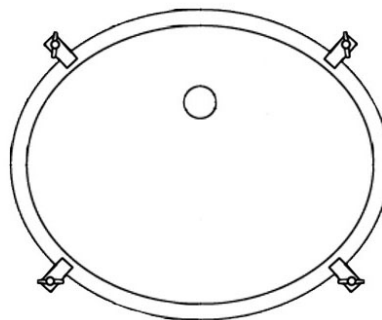
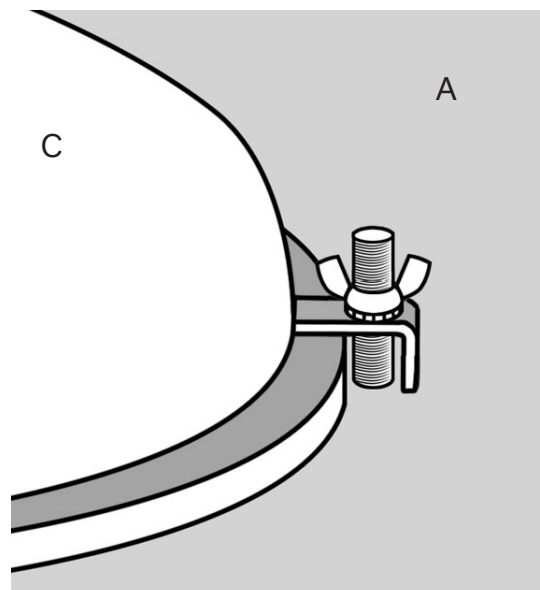
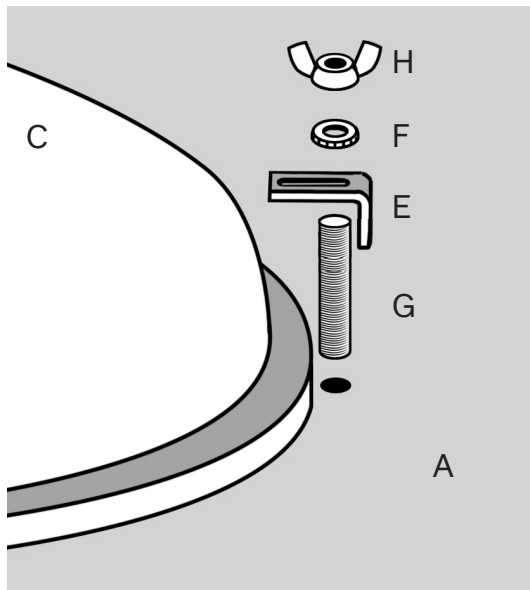
---

### PRIMARY INSTALLATION REQUIREMENTS

- Professional two-person crew
- Water supply and drain piping installed according to local plumbing and building codes (sold separately)
- Wall and floor are square and plumb at installation site
- Washstand Base [D] installed square and plumb with wall and floor. Washstand Base [D] also needs to be level
- Ensure Stone Top [A] is the correct size to match the Washstand Base [D]

## BASIN INSTALLATION

1. Place Stone Top [A] upside down on a blanket or smooth cardboard. Four holes with threaded inserts should be visible for each sink.
2. Apply a continuous bead of silicone sealant to the top surface of lavatory Basin [C] rim where it comes in contact with underside of Stone Top [A] (see illustration below).
3. Position Basin [C] in its final location. The Basin may need to be repositioned slightly to fit the screws into each hole. Secure Mounting Bracket [E] under the Basin lip. Make sure overflow of Basin is located on the same side as the pre-drilled faucet holes in Stone Top [A].
4. Align Threaded Rod [G], Lock Washer [F] and Wing Nut [H] with pre-installed stone top threaded insert and secure on all 4 points with mounting bracket [E].



Sink Bracket Locations

### STONE TOP INSTALLATION



Caution! Installation between two walls requires special care.  
If installing between two walls, stop here and follow the next set of instructions.

---

### STANDARD STONE TOP INSTALLATION GUIDELINES

1. Using a two-man crew, lift Stone Top and set it on top of the Washstand Base [D].
  2. Apply Silicone sealant at the seam where Backsplash [B] meets the wall.
- 

### STONE TOP INSTALLATION BETWEEN TWO WALLS

1. Using a two-person crew, lift Stone Top and set its rear edge on the back of the Washstand Base [D] (closest to the rear wall). See below illustration.
2. Lower front of Stone Top onto the Washstand Base, making sure both ends are lowered at the same rate.
3. Do not shimmy, twist or turn the Stone Top while lowering as this increases the risk of breakage.
4. Apply Silicone sealant at the seam where Backsplash [B] meets the wall.



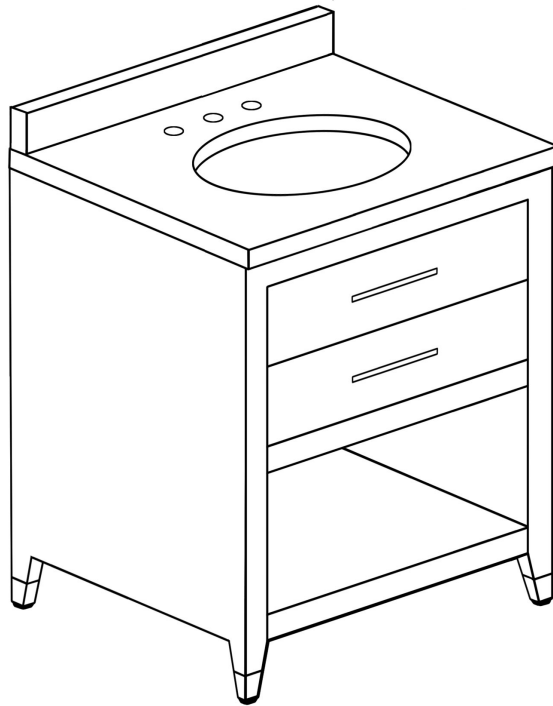
### CLEANING AND MAINTENANCE

- Avoid abrasive and harsh chemical cleaners.
  - RH Stone Tops have a honed finish, hand-polished edges, and are sealed twice with inert silicone sealant.
  - Stone Tops should be re-sealed annually.
-

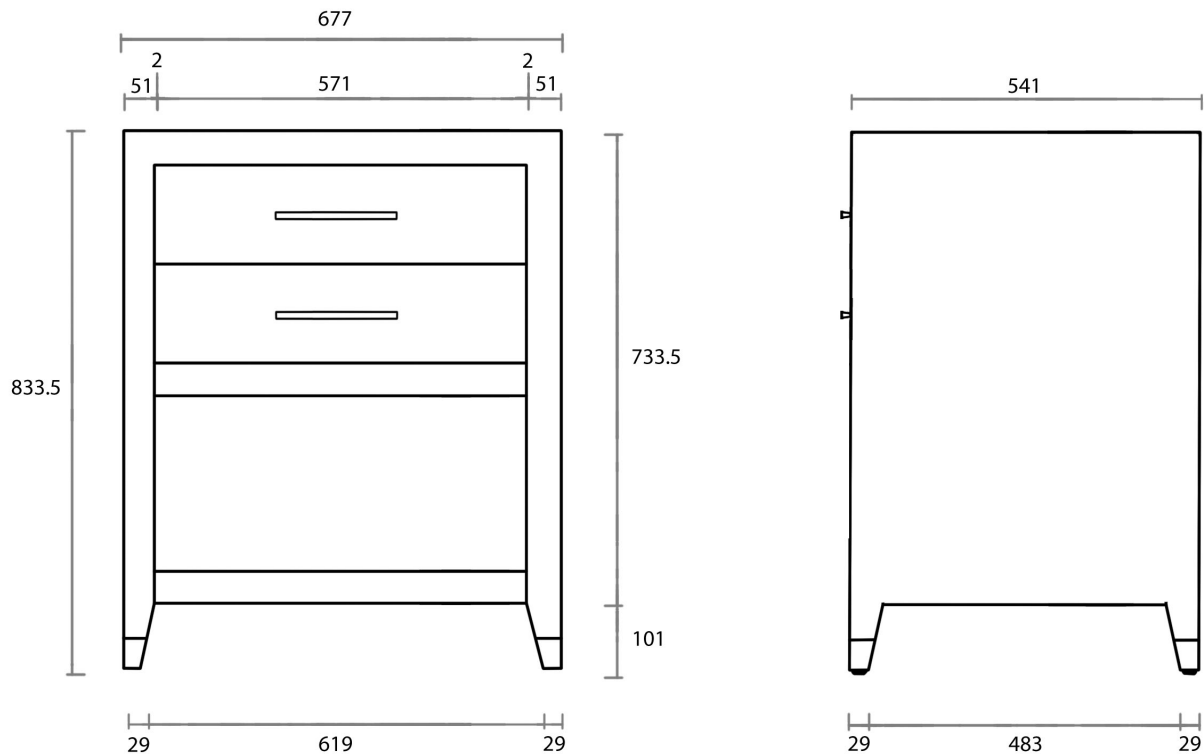
# RH

## GRAYDON SHAGREEN POWDER WASHSTAND

---



### WASHSTAND DIMENSIONS IN MILLIMETERS



## GRAYDON SHAGREEN POWDER WASHSTAND

Technical drawing of a rectangular plate with a central hole and three top holes. The dimensions are as follows:

- Overall width: 687
- Overall height: 546
- Distance from top edge to the center of the top holes: 343.5
- Distance from left edge to the center of the first top hole: 79
- Distance between the centers of the top holes: 102
- Distance from the center of the last top hole to the right edge: 102
- Radius of the top holes: 32 (labeled as 32 RADIUS)
- Distance from the top edge to the top of the central hole: 159.5
- Distance from the left edge to the left of the central hole: 158
- Width of the central hole: 371
- Distance from the bottom of the central hole to the bottom edge: 286
- Distance from the bottom edge to the bottom of the plate: 100.5

Technical drawing of a bowl-shaped object. The drawing shows a cross-section of the bowl. The top edge is a straight line with a dimension line above it indicating a width of 435. The bottom edge is a semi-circular arc. A vertical dimension line on the right side indicates a height of 175 from the top edge to the bottom of the bowl.