

# RH

GLASS GLOBE MOBILE LEVER TABLE LAMP

ASSEMBLY AND INSTALLATION INSTRUCTIONS

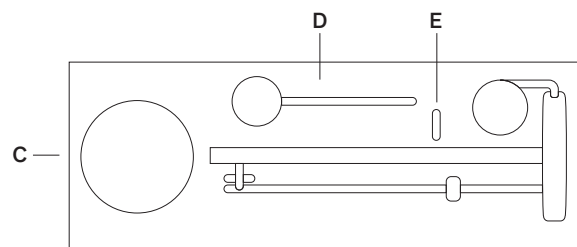
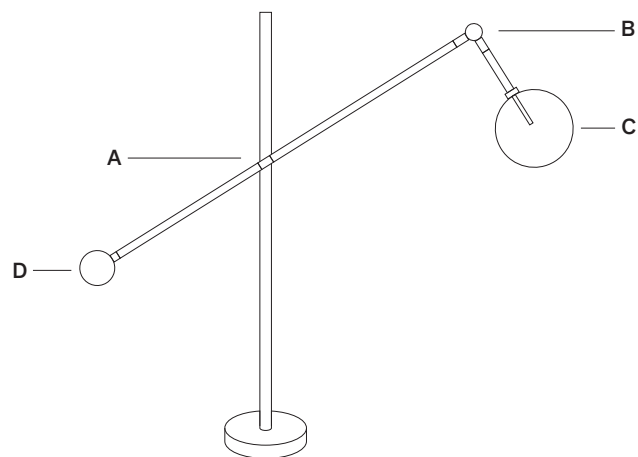
**ENGLISH**

**GLASS GLOBE MOBILE LEVER TABLE LAMP****PARTS INCLUDED**

- (A) Main arm lever (1)
- (B) Arm tip wing screw (1)
- (C) Glass Globe (1)
- (D) Counterweight (1)
- (E) 1.6W LED G4 bulb (1)

**TOOLS INCLUDED**

Pair cotton of gloves



**IMPORTANT: PLEASE READ****IMPORTANT SAFETY FEATURES****BULBS**

This fixture has been rated for up to 1 x 15 watt maximum Type G4 incandescent lightbulbs or up to 15 watt maximum LED lightbulbs. To avoid the risk of fire, do not exceed the recommended wattage.

**DIMMER SWITCH COMPATIBILITY**

This fixture is dimmer-switch compatible, and may only be used with an ELV dimmer switch.

**WARNING**

All wires are connected. When unpacking, be careful not to pull wires, as damage may result. Do not connect electricity until the fixture is fully assembled. To reduce the risk of fire, electrical shock, or personal injury, always turn off fixture and allow it to cool prior to replacing the lightbulb. Do not touch or look directly at the bulb when fixture is illuminated. Keep flammable materials away from lit bulb.

**WARNING: STRANGULATION HAZARD**




Keep cord at least 3 feet (91cm) away from cribs, bassinets, and toddler beds.  
Keep out of reach of children under 3 years of age.


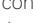
**THIS PRODUCT IS NOT A TOY AND HAS NO PLAY VALUE.**

**SAFETY PRECAUTION WHILE INSTALLING AND USING LIGHTNING FIXTURE:**

The manufacturer (reseller) shall not be held liable for any damage caused by improper installation and operation. The installation and wiring connection must be performed by a licensed professional. All applicable regulations and norms shall be observed while installing the fixture. Make sure you cut off electrical supply at the main fuse box/circuit breaker before commencing any work.

The fixture for indoor use only. 

Avoid mounting on wet surfaces or surfaces with high conductivity. Wires to be connected with push-in wire connectors in line with EN 60998. The connector terminal should hold safety certificates applicable in Poland and the Europe Union. A fixture of Class I protection  should be connected to electrical ground  with an earth conductor (green and yellow wire). A fixture of class II protection  includes double insulation wiring and cannot be connected to electrical ground. Make sure the wiring is not damaged during installation. Should the fixture be damaged, it should be replaced with the same type, voltage and wattage (see label). Protect the fixture against any water or humidity contact with power supply. If the fixture is to be mounted in rooms with bath tubs/showers, electrical installation regulations for buildings shall apply.

The fixture uses irreplaceable Z type wires. No replacement of internal or external wiring shall be performed by users. It will always lead to irreversible modification of intended fixture parameters and may lead to improper operation and risk to the user.  Class II protection (with safety insulation) - electrical ground (yellow and green wire) must not be connected.  Class I protection - light fixture must be connected to electrical ground with an earth conductor (green and yellow wire). Fixtures to be used indoor in temperatures about  $t_a = 25^{\circ}\text{C}$ .

Do not touch 

Risk of burn 

Broken glass must be replaced 

**ENVIRONMENT PROTECTION NOTE:**

Used electrical appliances are recyclable - they cannot be disposed of with regular waste as they may contain substances which are hazardous to human health and the environment. Pursuant to the WEEE directive (Directive 2012/19/EU) applicable in the European Union, Electrical and electronic equipment must be collected and treated separately.

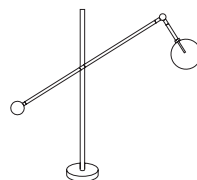
Any user intending to dispose of this product shall be obliged to take it to the collection point for electrical and electronic equipment, such as the distributor of the equipment or any other unit providing such services.

The manufacturer (reseller) shall not be held liable for any damage or harm caused by improper operation of the fixture.

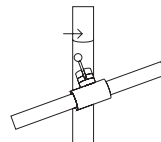
**ASSEMBLY INSTRUCTIONS**

**SHUT OFF THE MAIN ELECTRICAL SUPPLY FROM THE FUSE BOX OR CIRCUIT BREAKER PANEL.**

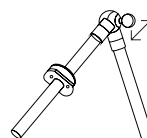
1. Carefully unpack the lamp and put it in the desired location.
2. Set the lamp at the desired angle and secure it with the interlocking lever [A]. NOTE: Do not force the lever otherwise you may break the lock.
3. Set the tip of the arm at a 90 degree angle and secure the position with a wing screw. NOTE: Do not force the wing screw otherwise you may break the thread.
4. Screw the counterweight [D] into the arm.
5. Carefully insert the 1.6W LED G4 bulb included into slots at the tip of each arm.
6. Start mounting glass globes from the top arm downwards by first removing the plastic stopper from the globe to be mounted. NOTE: Included cotton gloves must be worn when handling glass globes.
7. Slide the globe onto the bulb tip and screw it on by first gently turning it counterclockwise until you hear a click, and then turn it clockwise. Make sure the globe turns on straight onto the thread.
8. Restore power and enjoy your RH Lamp.



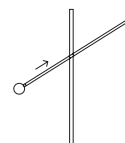
1



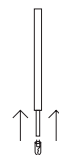
2



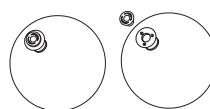
3



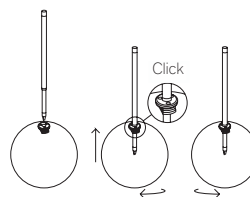
4



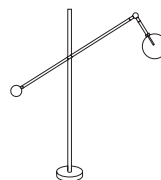
5



6



7



8

**CLEANING AND MAINTENANCE**

**NOTE: MAKE SURE YOU CUT OFF ELECTRICAL SUPPLY TO THE LAMP BEFORE COMMENCING CLEANING OPERATIONS.**

**BRASS FRAME:** Clean every month using a soft cloth, dampened slightly with water. Make sure the frame is dry before switching it back on. Tools: Soft cloth, water.

**GLASS GLOBES:** Clean regularly with a soft dry cloth. Clean only the outside of the globe. When dirtier, use a wet cloth first. Grease can be cleaned with a gentle glass cleaner. Tools: Soft cloth, cotton gloves.

**LED BULBS:** Make sure your power supply is off before changing the bulb. Unscrew the globe where bulb needs replacing. Gently remove the bulb by pulling it out and replace with an LED bulb of the same parameters. Tools: Cotton gloves, LED bulbs.

NOTE: Please remember solid brass may tarnish over time. This is a natural process. Make sure you follow our guidelines to preserve the great look of RH lighting for years.

**TROUBLESHOOTING**

**NOTE: THE HANDMADE NATURE OF THE PRODUCTS OFFERS A UNIQUE AESTHETIC EXPERIENCE AND ALLOWS FOR SMALL IMPERFECTIONS, WHICH IS INHERENT IN CRAFTS. IF SOLUTIONS OFFERED BELOW ARE NOT SUFFICIENT, PLEASE DO NOT HESITATE AND CONTACT OUR CUSTOMER SERVICE.**

**PROBLEM: TARNISHING**

Oxidation of brass is a natural process. Although it is lacquered, its color may change slightly over time. No action is necessary apart from regular cleaning. See the Maintenance section.

**PROBLEM: NOISE**

The humming noise normally comes from transformers. Check electrical connections and make sure the right dimmer is used – ELV.

**PROBLEM: GLOBE DEFORMATIONS**

Mouth-formed glass globes are beautiful but not perfect. The process leaves a slight deformation at the bottom of the globe. No action is necessary. All globes undergo a quality check. Should you have any doubts, please send us a photo of the deformed globe and we will act accordingly.