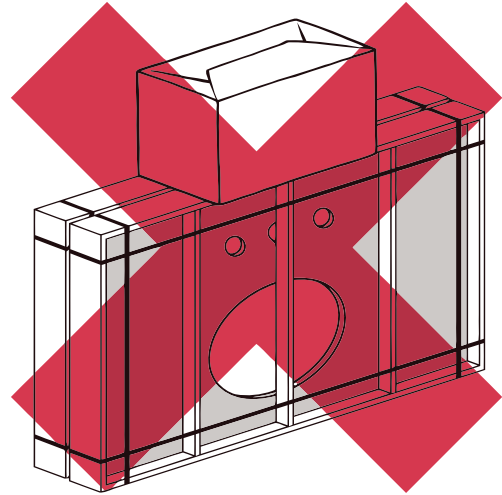
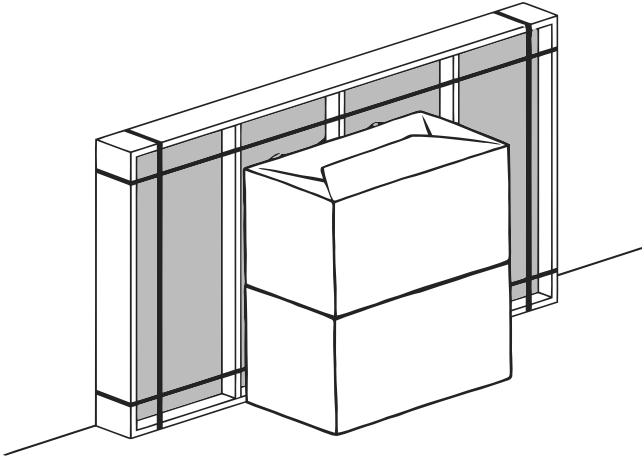


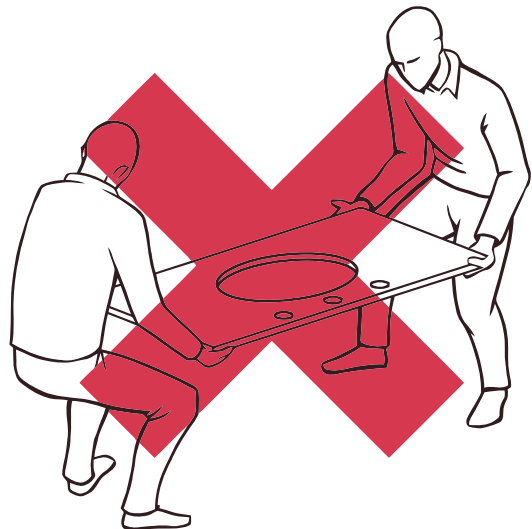
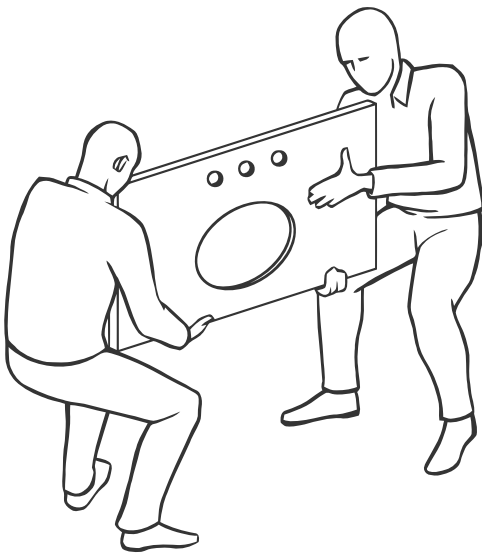
CRATE STORAGE



- Keep Stone Top in its crate until installation
- Store crate vertically in a safe location

- Do not stack anything on top of crate

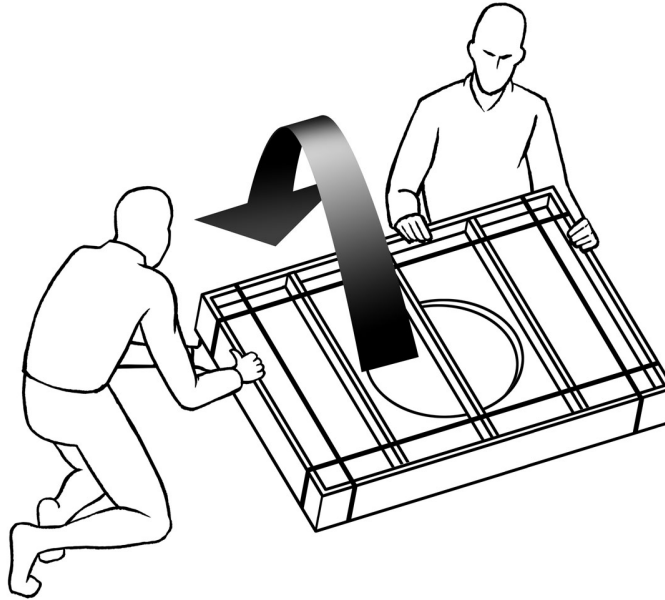
STONE TOP TRANSPORT



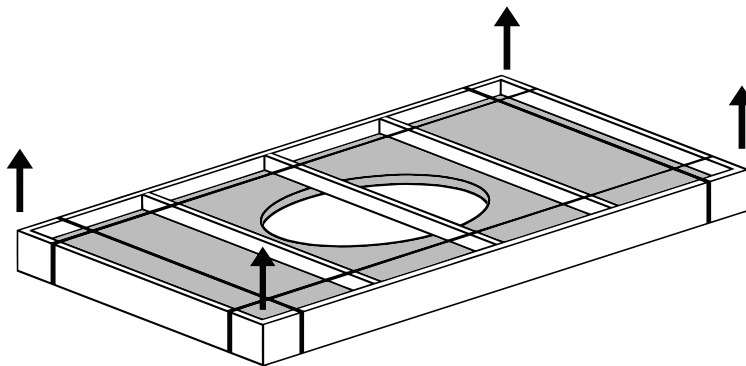
- When moving Stone Top always use a two-man crew.
- Always carry Stone Top vertically.

- Do not carry Stone Top horizontally as it increases the risk of breakage or cracking.

STONE TOP UNPACKING



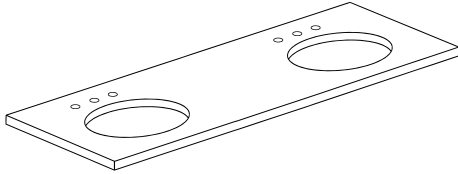
- Carefully, without allowing any freefall, rotate the crate from vertical to flat.



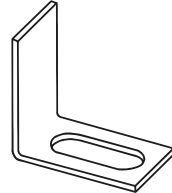
- Remove metal bands, unscrew the slats or lid, and lift the Stone Top out of the crate.

PARTS LIST

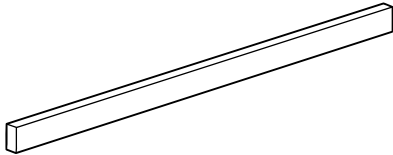
A. Stone Top (Oval or Rectangular)



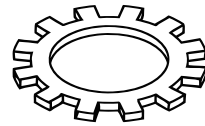
E. Mounting Bracket (x8)



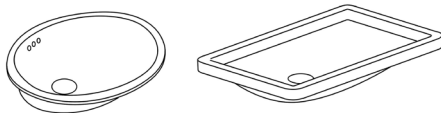
B. Backsplash



F. Lock Washer (x8)



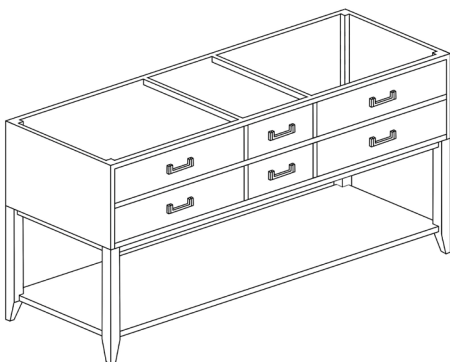
C. Basins (Oval or Rectangular) (x2)



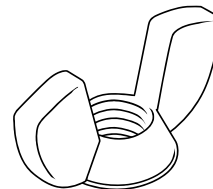
G Threaded Rod (x8)



D. Washstand Base



H. Wing Nut (x8)





CAYDEN 72 DOUBLE WASHSTAND

STONE TOP INSPECTION

- Before you begin, inspect the Stone Top for cracks and defects. If defects are detected, do not install and please call 800-762-1005. If no defects are detected clean Stone Top with a soft cloth.

TOOL AND MATERIAL REQUIREMENTS

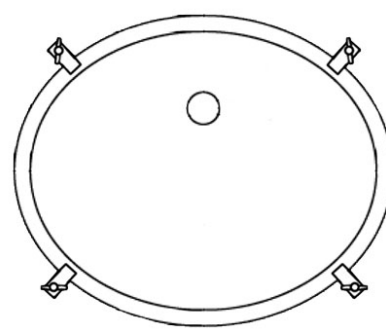
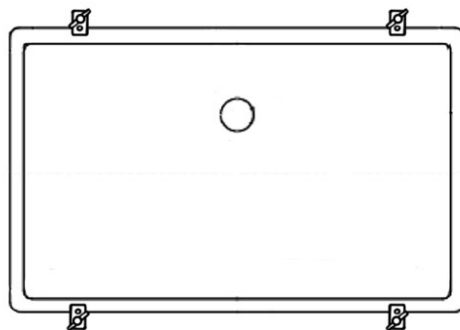
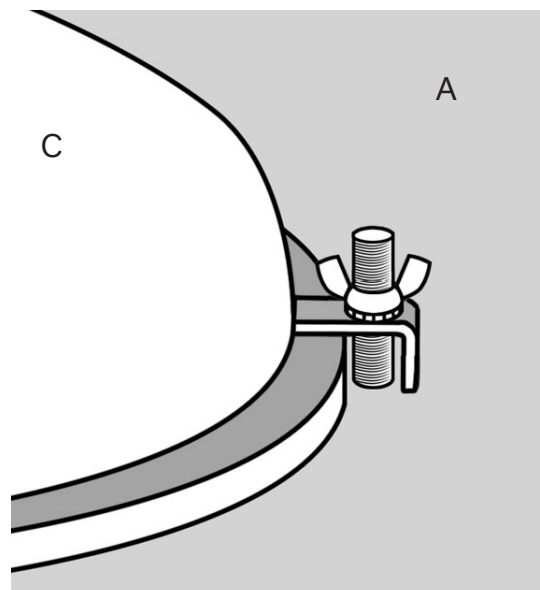
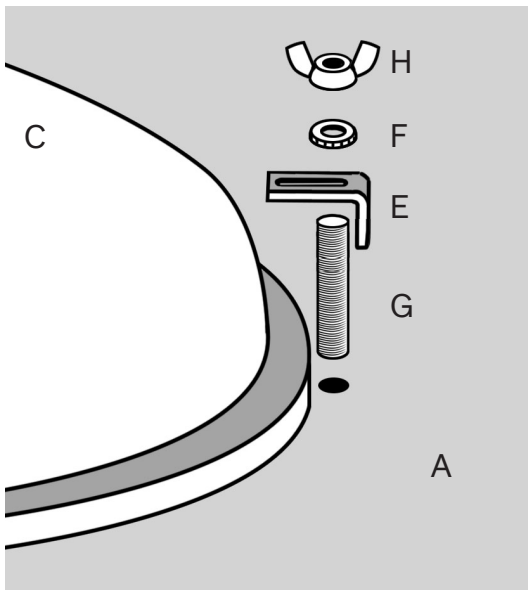
- Flat, non-abrasive work surface (blanket or smooth cardboard)
- Sealant
- Carpenter's level

PRIMARY INSTALLATION REQUIREMENTS

- Professional two-man crew
- Water supply and drain piping installed according to local plumbing and building codes (sold separately).
- Wall and floor are square and plumb at installation site.
- Washstand Base [D] installed square and plumb with wall and floor. Washstand Base [D] also needs to be level.
- Ensure Stone Top [A] is the correct size to match the Washstand Base [D].

BASIN INSTALLATION

1. Place Stone Top [A] upside down on a blanket or smooth cardboard. Four holes with threaded inserts should be visible for each sink.
2. Apply a continuous bead of silicone sealant to the top surface of lavatory Basin [C] rim where it comes in contact with underside of Stone Top [A] (see illustration below).
3. Position Basin [C] in its final location. The Basin may need to be repositioned slightly to fit the screws into each hole. Secure Mounting Bracket [E] under the Basin lip. Make sure overflow of Basin is located on the same side as the pre-drilled faucet holes in Stone Top [A].
4. Align Threaded Rod [G], Lock Washer [F] and Wing Nut [H] with pre-installed stone top threaded insert and secure on all (4) points with mounting bracket [E].



Sink Bracket Locations

STONE TOP INSTALLATION



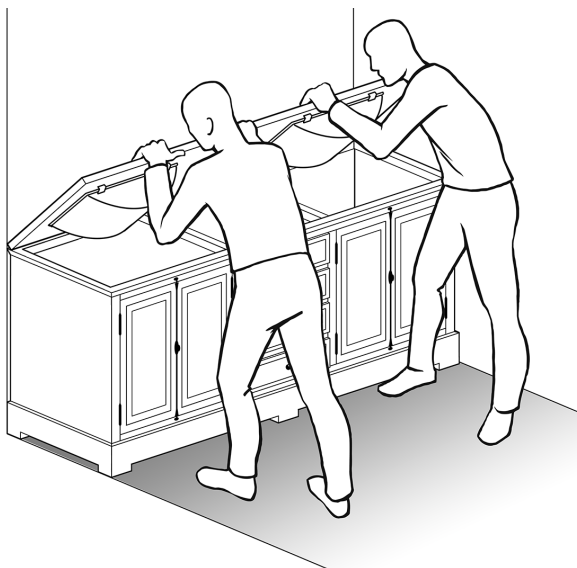
Caution! Installation between two walls requires special care.
If installing between two walls, stop here and follow the next set of instructions.

STANDARD STONE TOP INSTALLATION GUIDELINES

1. Using a two-man crew, lift Stone Top and set it on top of the Washstand Base [D].
 2. Apply Silicone sealant at the seam where Backsplash [B] meets the wall.
-

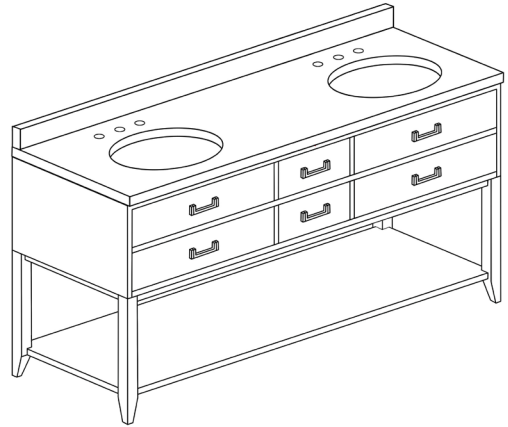
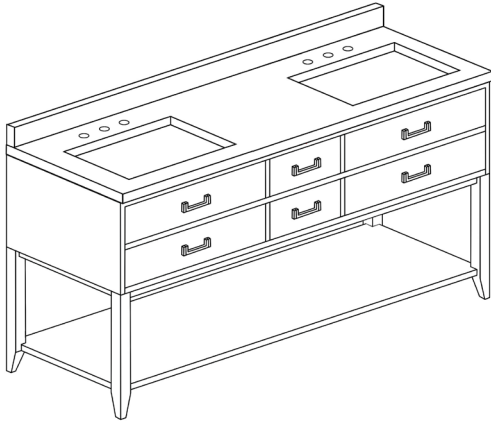
STONE TOP INSTALLATION BETWEEN TWO WALLS

1. Using a two-man crew, lift Stone Top and set its rear edge on the back of the Washstand Base [D] (closest to the rear wall) see below illustration.
2. Lower front of Stone Top onto the Washstand Base, making sure both ends are lowered at the same rate.
3. Do not shimmy, twist or turn the Stone Top while lowering as this increases the risk of breakage.
4. Apply Silicone sealant at the seam where Backsplash [B] meets the wall.

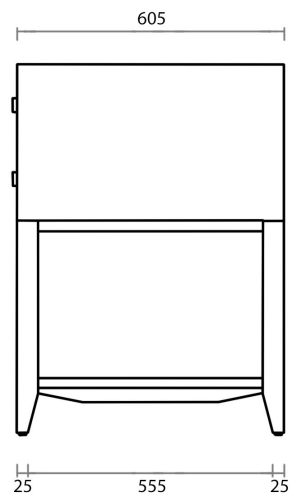
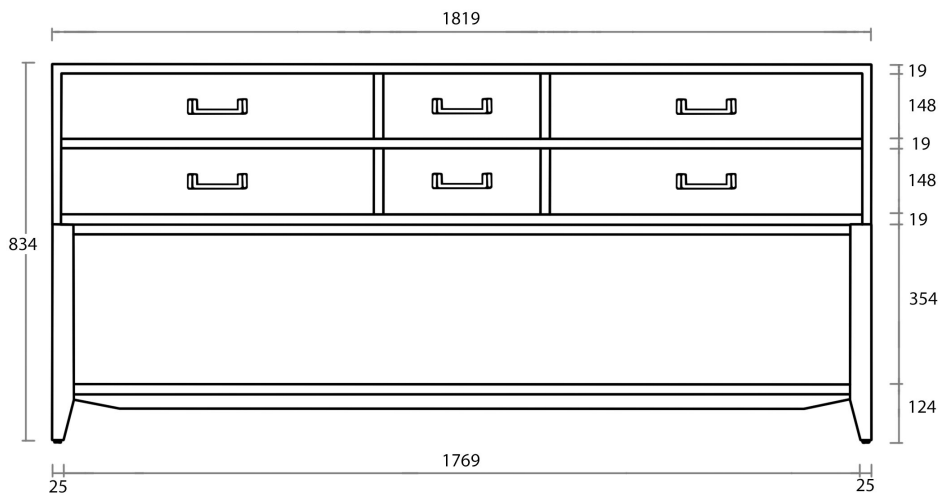


CLEANING AND MAINTENANCE

- Avoid abrasive and harsh chemical cleaners.
 - RH Stone Tops have a honed finish, hand polished edges, and are sealed twice with inert silicone sealant.
 - Stone Tops should be re-sealed annually.
-



WASHSTAND DIMENSIONS IN MILLIMETERS



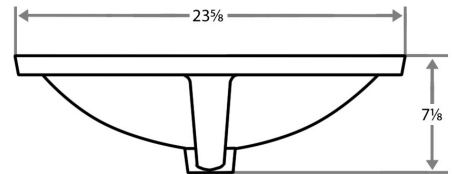
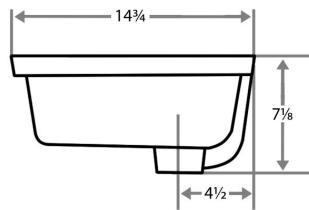
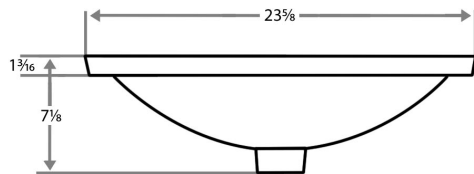
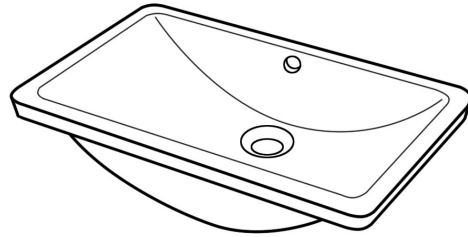
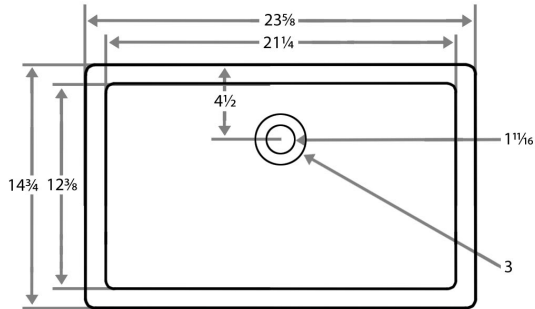
CAYDEN 72 DOUBLE WASHSTAND

Technical drawing of a rectangular backsplash. The overall dimensions are 71½ inches wide and 23 inches high. The top edge is labeled "BACKSPLASH". The drawing shows two identical rectangular cutouts, each 14⅞ inches wide and 14¼ inches high. The mounting details include three circular holes, each 1⅝ inches in diameter, spaced 4 inches apart. The vertical spacing from the top edge to the center of the holes is 4⅞ inches, and the vertical spacing from the bottom edge to the center of the holes is 14¼ inches. The horizontal spacing from the left edge to the center of the first hole is 4½ inches, and the horizontal spacing from the center of the first hole to the center of the second hole is 20⅜ inches. The horizontal spacing from the right edge to the center of the third hole is 4½ inches. The horizontal spacing from the center of the third hole to the center of the fourth hole is 22⅞ inches, and the horizontal spacing from the center of the fourth hole to the center of the fifth hole is 20⅜ inches.

Technical drawing of a double-basin kitchen sink. The drawing includes the following dimensions and labels:

- Overall Width:** 71½
- Backsplash Height:** 3
- Backsplash Label:** BACKSPLASH
- Basin Width:** 72
- Basin Depth:** 23
- Basin Diameter:** 14¾
- Basin Mounting Hole Diameter:** 1⅜ DIAMETER
- Basin Mounting Hole Spacing:** 4 (between holes)
- Basin Mounting Hole Diameter:** 2¾
- Basin Mounting Hole Spacing:** 3 (from edge to first hole)
- Basin Mounting Hole Spacing:** 5⅞ (from edge to first hole)
- Basin Mounting Hole Spacing:** 18 (between holes)
- Basin Mounting Hole Spacing:** 24¾ (from edge to first hole)
- Basin Mounting Hole Spacing:** 18 (between holes)
- Basin Mounting Hole Spacing:** 5⅞ (from edge to first hole)

RECTANGULAR BASIN



OVAL BASIN

