

PARSONSTM

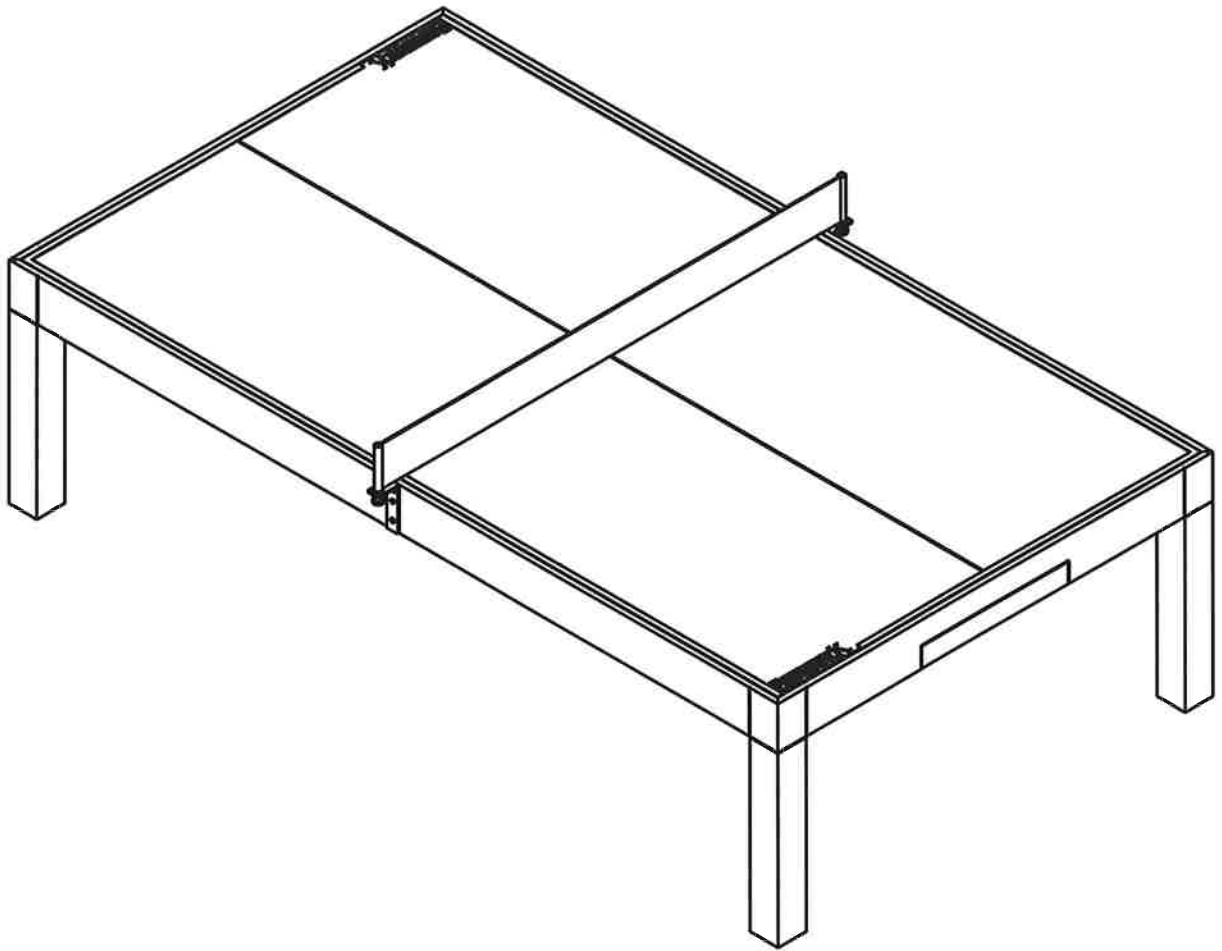
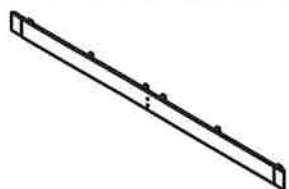


TABLE TENNIS INSTALLATION MANUAL



www.brunswickbilliards.com
SERVICE DEPARTMENT P.O. BOX 68 BRISTOL, WI 53104
EMAIL: BRUNSWICKSERVICE@BRUNSWICKBILLIARDS.COM

PARSONS TABLE TENNIS PARTS LIST



SIDE RAIL ASSY = 2 PCS



END CROSS SUPPORT ASSY = 2 PCS



CENTER CROSS SUPPORT ASSY = 2 PCS



END RAIL ASSY = 2 PCS



RH DRAWER RUNNER ASSY = 2 PCS
LH DRAWER RUNNER ASSY = 2 PCS



DRAWER ASSY = 2PCS



FLAT WASHER 5/16 = 32 PCS



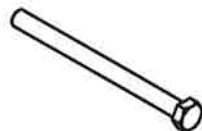
HEX HD BOLT 5/16 X 1 3/4" = 32 PCS



RH LEG POST ASSY = 2 PCS
LH LEG POST ASSY = 2 PCS



FLAT WASHER 3/8 = 20 PCS



HEX HD BOLT 3/8 X 4 3/4" = 16 PCS

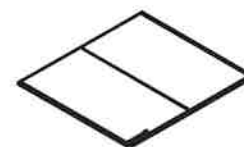


TABLE TOP PLAY SURFACE = 2 PCS



LEATHER NET ASSY - 1 PC



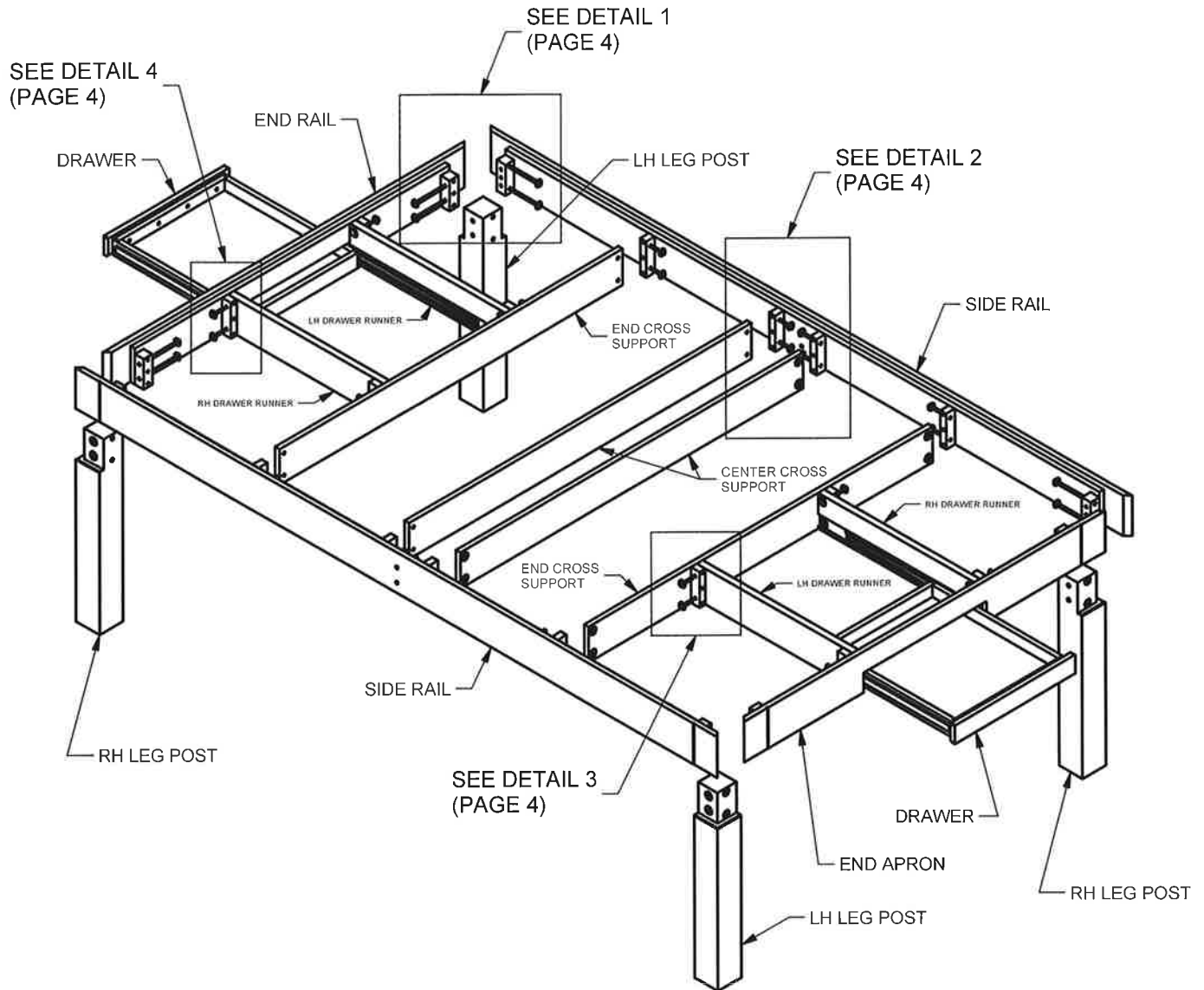
NET POST ASSY = 2 PCS



RND SQ. NECK BOLT 3/8 X 2 1/4" = 4 PCS
FLAT WASHER 3/8 = 4 PCS
WING NUT 3/8 = 4PCS



TABLE TENNIS ASSEMBLY



NOTE: TWO PEOPLE REQUIRED FOR ASSEMBLY OF THIS PRODUCT.

NOTE: ALL FASTENERS TO BE HAND TIGHT ONLY UNTIL ALL COMPONENTS ARE IN PLACE.

STEP 1: ATTACH ONE RH AND ONE LH LEG POST TO EACH END RAIL ASSEMBLY.(SEE DETAIL 1 - PAGE 4)

STEP 2: WITH ONE PERSON AT EACH END, HOLD THE END RAILS WITH ATTACH LEG POSTS IN A VERTICAL POSITION. LIFT THE SIDE RAIL ASSEMBLY INTO PLACE AND FASTEN AT EACH END. REPEAT FOR THE OTHER SIDE RAIL.(SEE DETAIL 1 - PAGE 4)

STEP 3: ATTACH END AND CENTER CROSS SUPPORTS AS SHOWN.(SEE DETAIL 2 - PAGE 4)

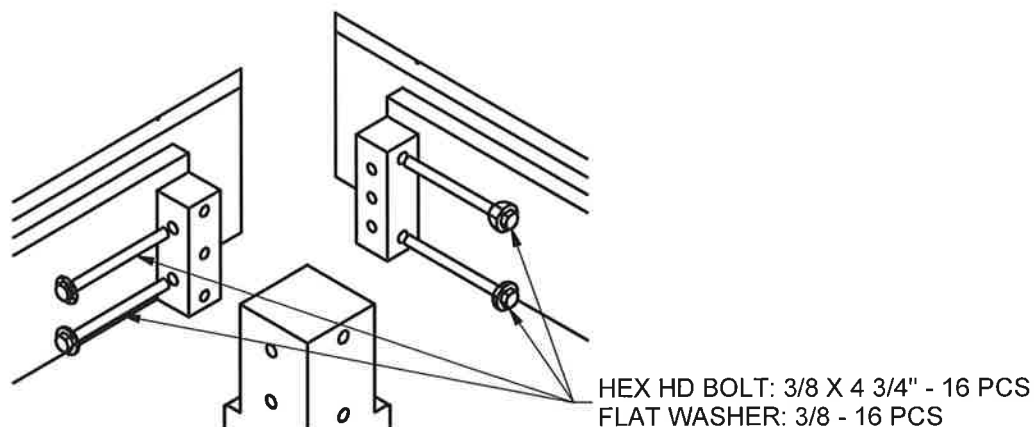
STEP 4: ATTACH BOTH RH AND LH DRAWER RUNNER ASSEMBLIES AS SHOWN.(SEE DETAILS 3 & 4 - PAGE 4)

STEP 5: TIGHTEN ALL HARWARE WHILE HOLDING ALL JOINTS TIGHT. ALL SUPPORT ARE TO BE FLUSH WITH THE LEDGE ON THE END AND SIDE RAILS PROVIDING A FLAT SUPPORT STRUCTURE FOR THE PLAY SURFACES.

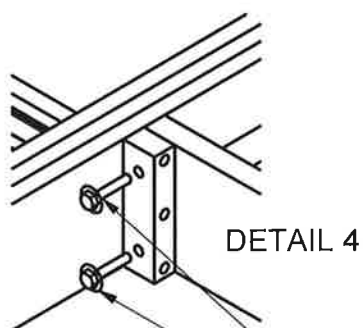
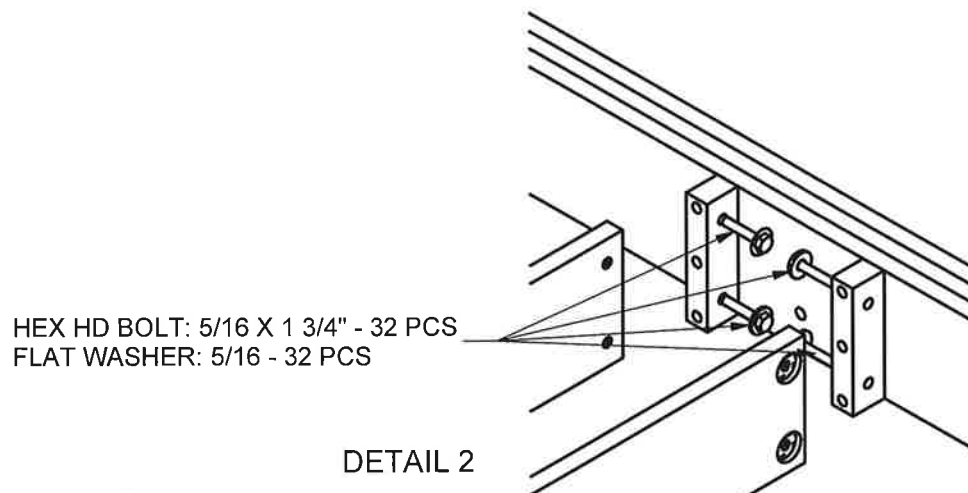
STEP 6: EXTEND DRAWER GLIDES FROM RUNNERS ALL THE WAY OUT. ENGAGE EACH DRAWER INTO THE GLIDES AND PUSH DRAWER ALL THE WAY INTO THE FRAME. DRAWERS SHOULD NOW MOVE FREELY IN AND OUT OF THE OPENING.



TABLE TENNIS ASSEMBLY



DETAIL 1



HEX HD BOLT: 5/16 X 1 3/4" - 32 PCS
FLAT WASHER: 5/16 - 32 PCS

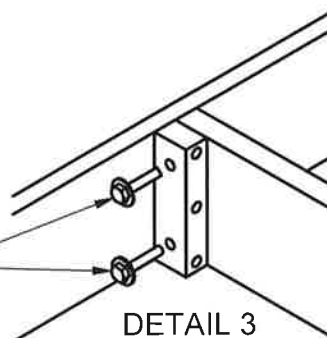
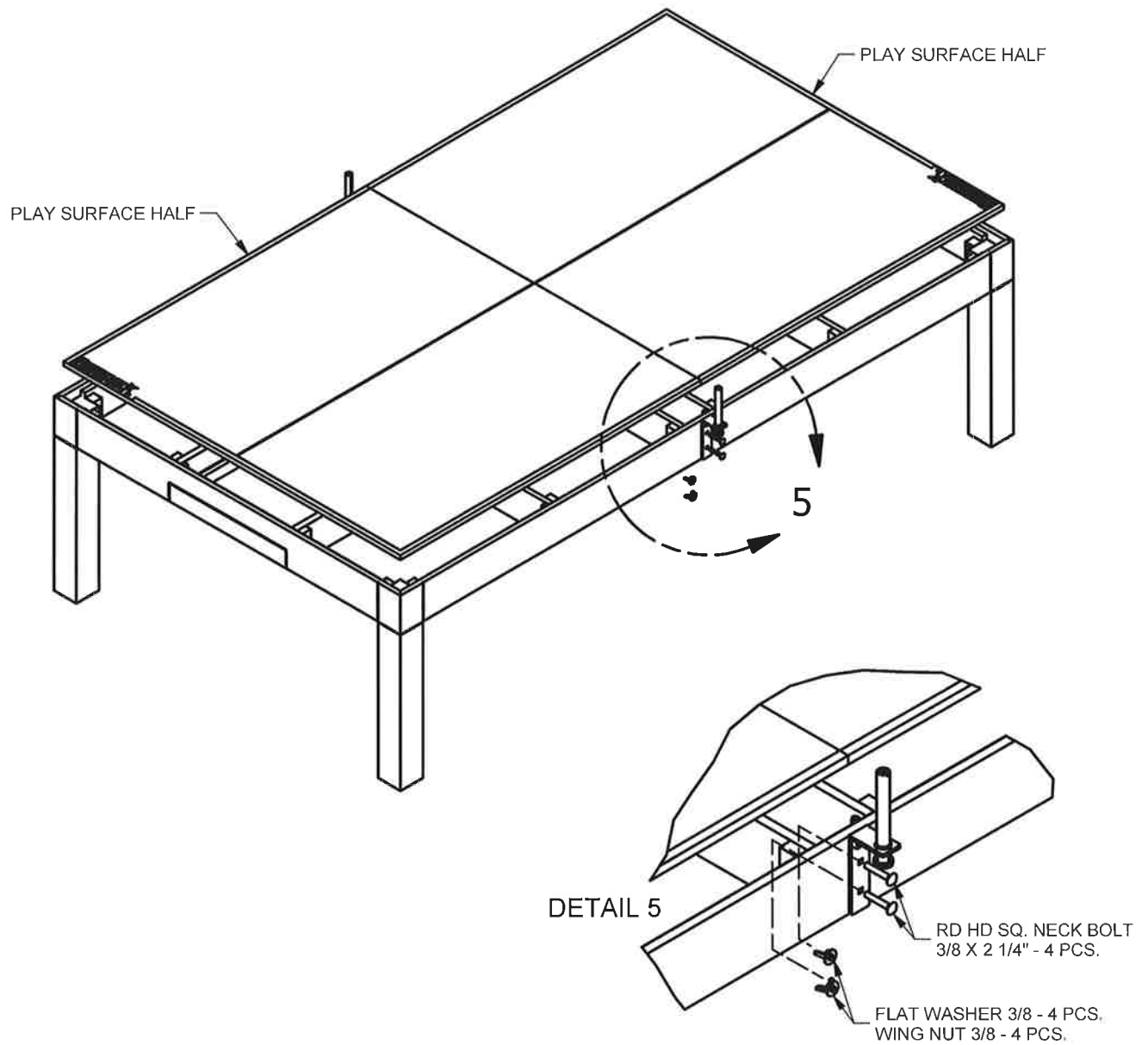


TABLE TENNIS ASSEMBLY



STEP 7: ATTACH A NET POST ASSEMBLY AT THE CENTER OF EACH SIDE RAIL AS SHOWN.(SEE DETAIL 5)

STEP 8: PLACE THE END EDGE OF EACH PLAY SURFACE HALF INTO THE FRAME AND SLOWLY LOWER TOWARD THE CENTER. CAUTION: BE SURE TO SUPPORT THE SECOND PIECE FROM UNDERNEATH AT THE CENTER WHEN LOWERING IT INTO FINAL POSITION.



TABLE TENNIS ASSEMBLY

STEP 9: ATTACH LEATHER NET AS SHOWN PER THE INSTRUCTIONS BELOW.

