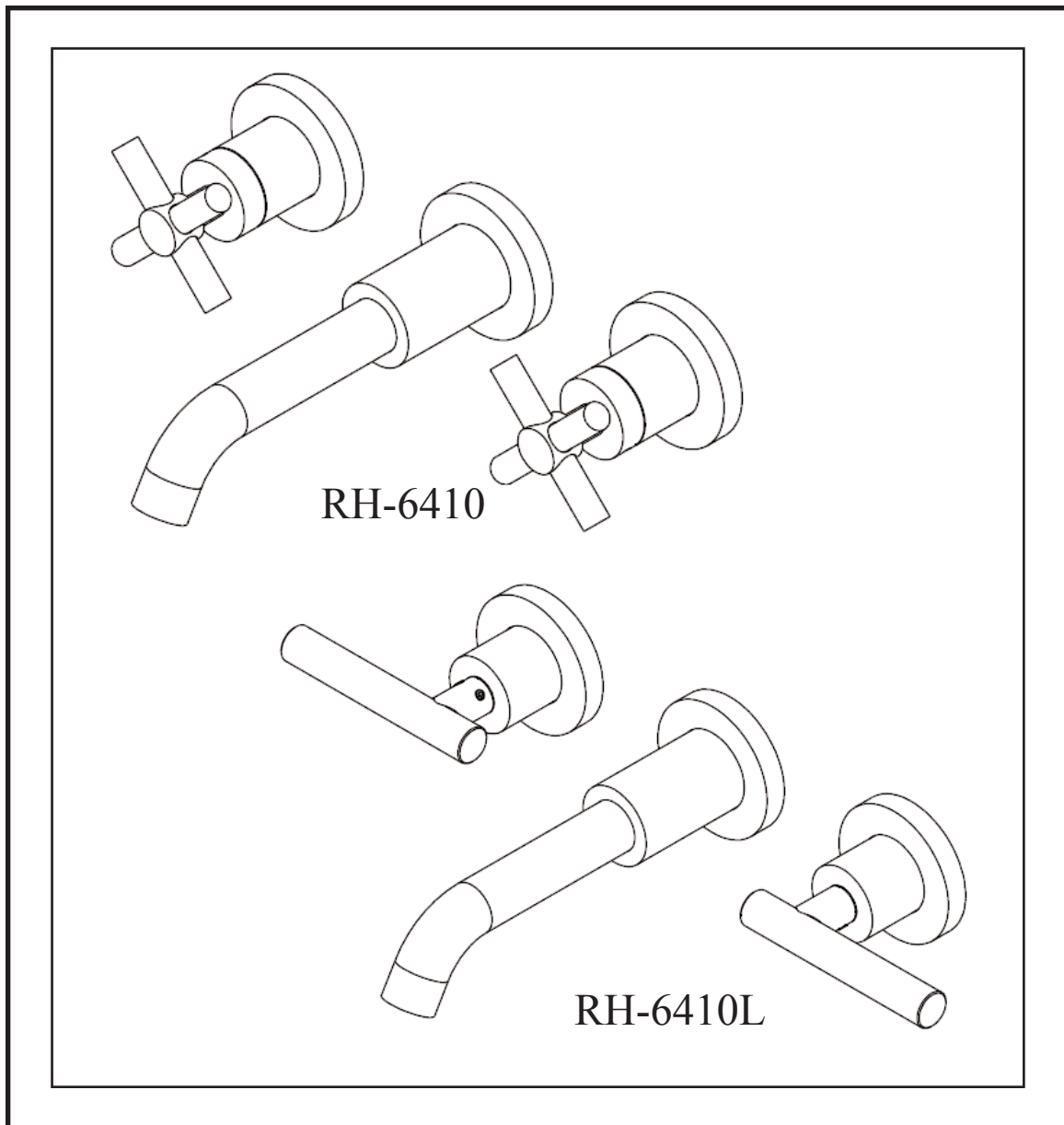


# RESTORATION HARDWARE

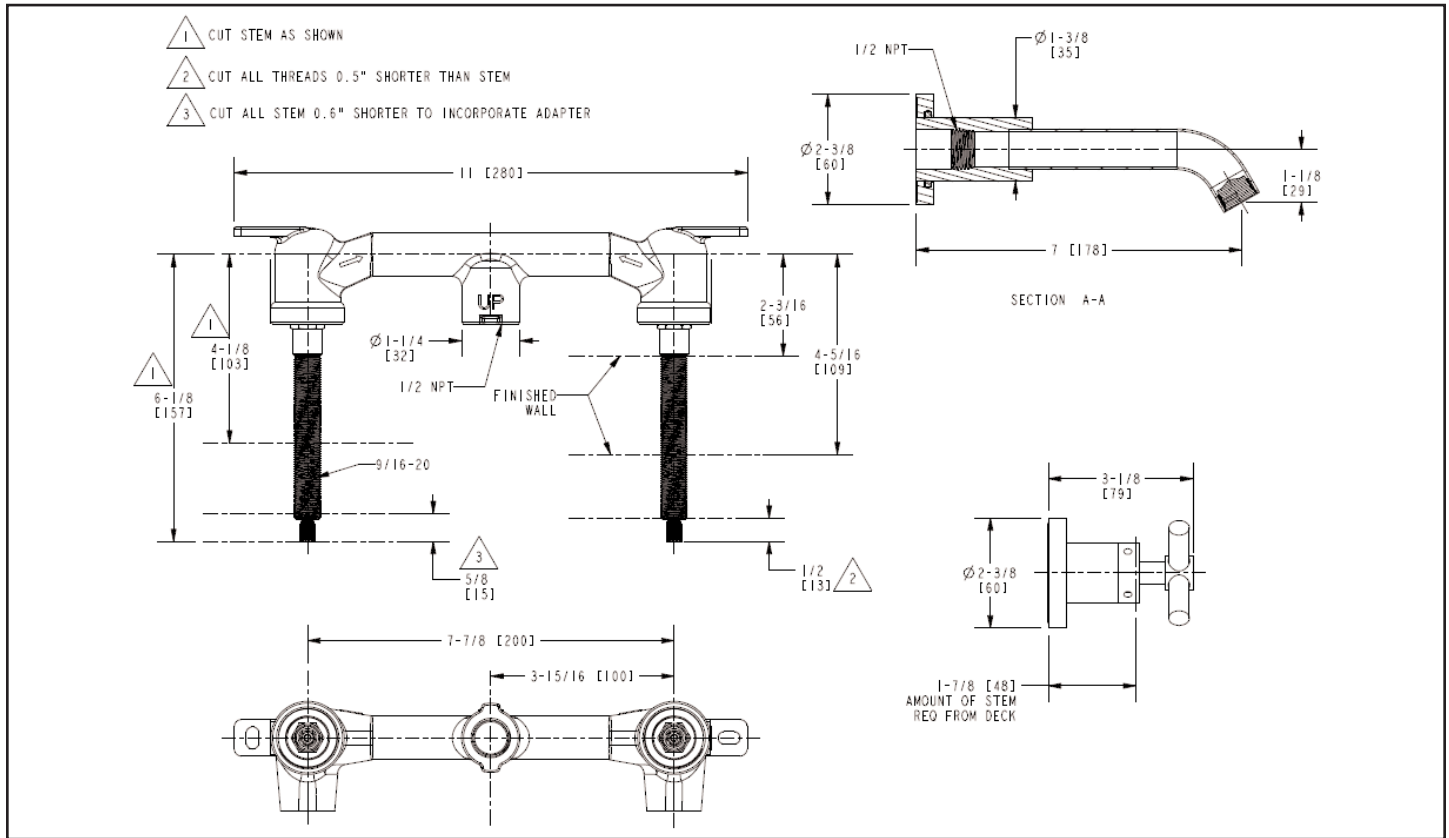
## INSTALLATION INSTRUCTIONS



MODEL: SUTTON  
23520037 (RH-6410)  
23520102 (RH-6410L)  
10040080 (RH-6411)

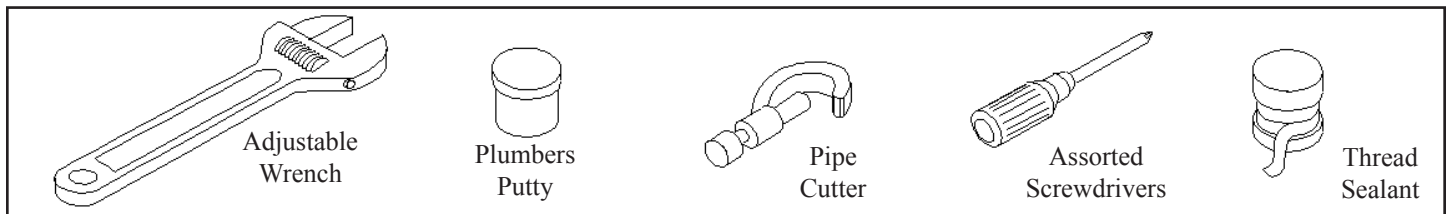
# Restoration Hardware Faucet Product Size Specification Diagram

**Note:** This valve is designed to fit in a 2" X 4" stud wall (or thicker) installation. Use stem extension kit #RH-I-384 (sold separately) if valve installed is too far away from finished wall).



## Dimensions are in Inches and Approximation of a Typical Installation

## Common tools needed:



## We Recommend Installation by a Professional Plumbing Contractor

**Note:** Use plumber's tape or equivalent to seal all threaded port joints.

**Warning:** To prevent severe damage to valve body, any solder/braze process must be performed a min. of 4" from ports.

**Important: REMOVE CARTRIDGE FROM VALVE BODY (1) PRIOR TO APPLYING ANY HEAT/FLAME.**

**Note:** If cartridges are removed during installation, re-torque to factory specification of 14-16 ft-lbs

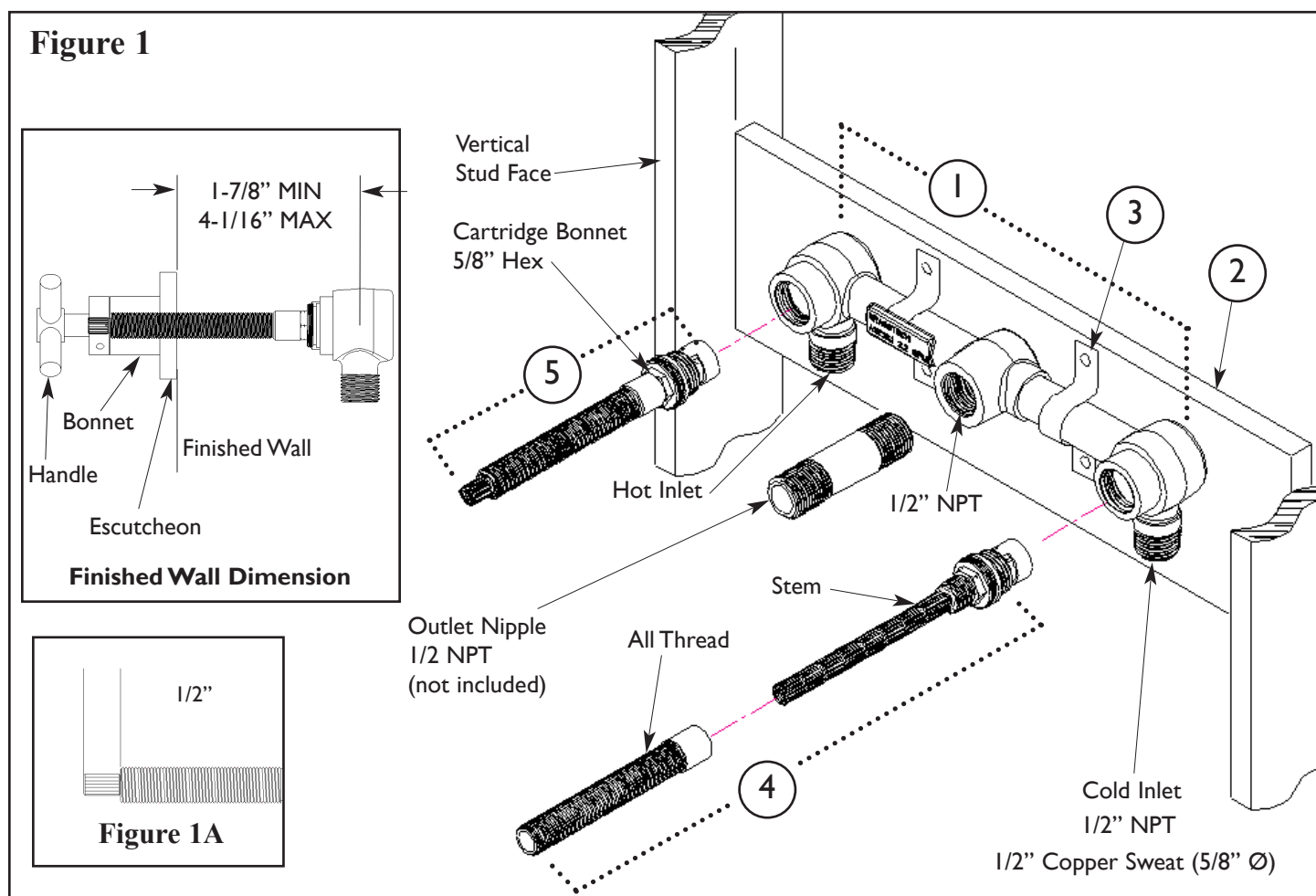
# 1. Valve Installation

- Utilizing a 1/2" copper supply piping, thread or sweat pipe fittings into inlets of valve BODY(1), (blue STEM (4) is cold, red STEM (5) is hot). If sweating supplies directly to valve inlets, remove cartridges (4 & 5) during this process.

*Note: If cartridges are removed during installation, re-torque to factory specification of 14-16 ft-lbs.*

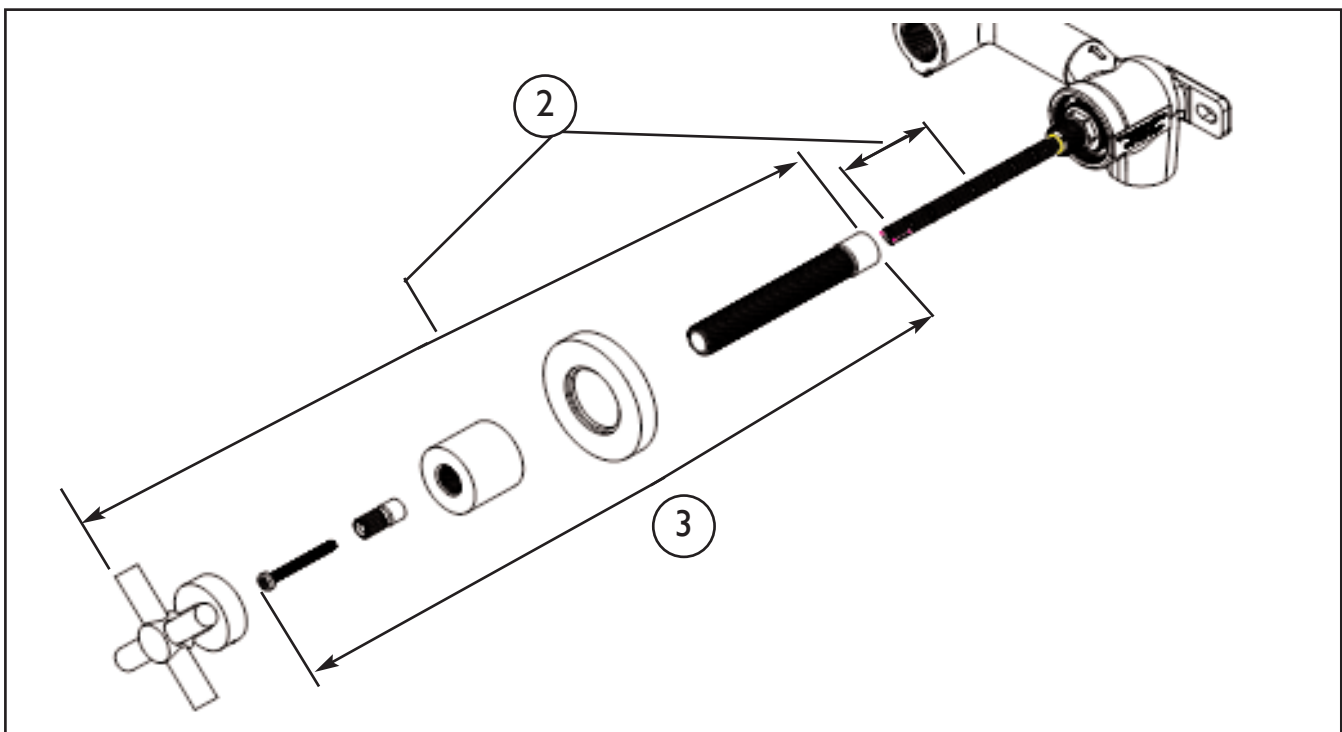
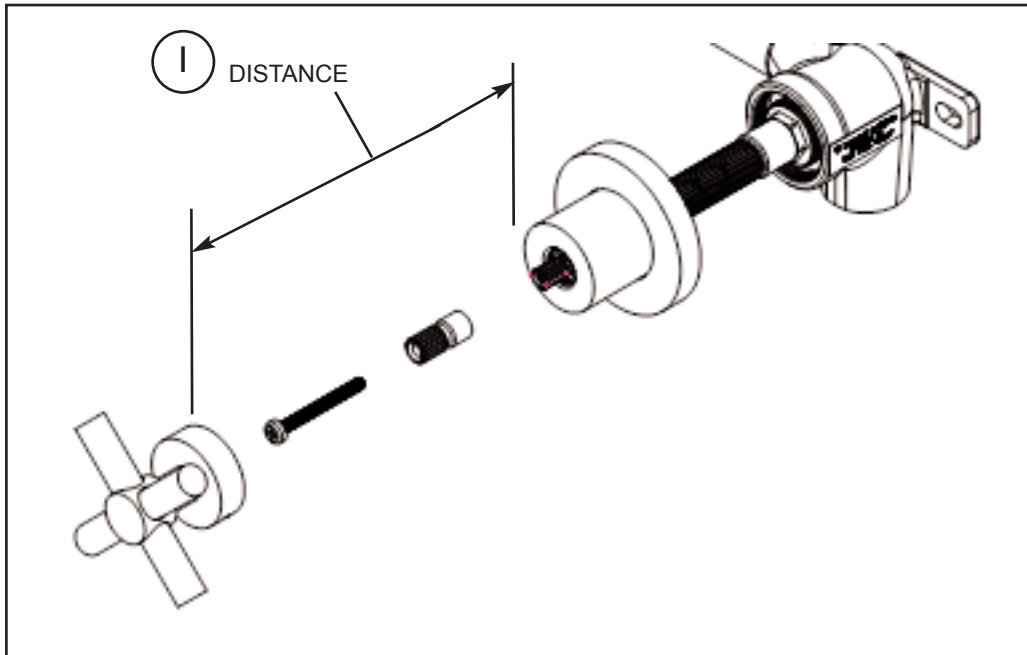
- Secure valve BODY (1) to cross BRACE (2) using plumbing STRAPS (3), not included.
- Check the horizontal and vertical level of valve BODY (1) by placing bubble level on STEMS (4, 5). Make any necessary adjustments.
- With STEM (4,5) in closed position, turn on water supply, pressurize system and check for leaks.

**Figure 1**



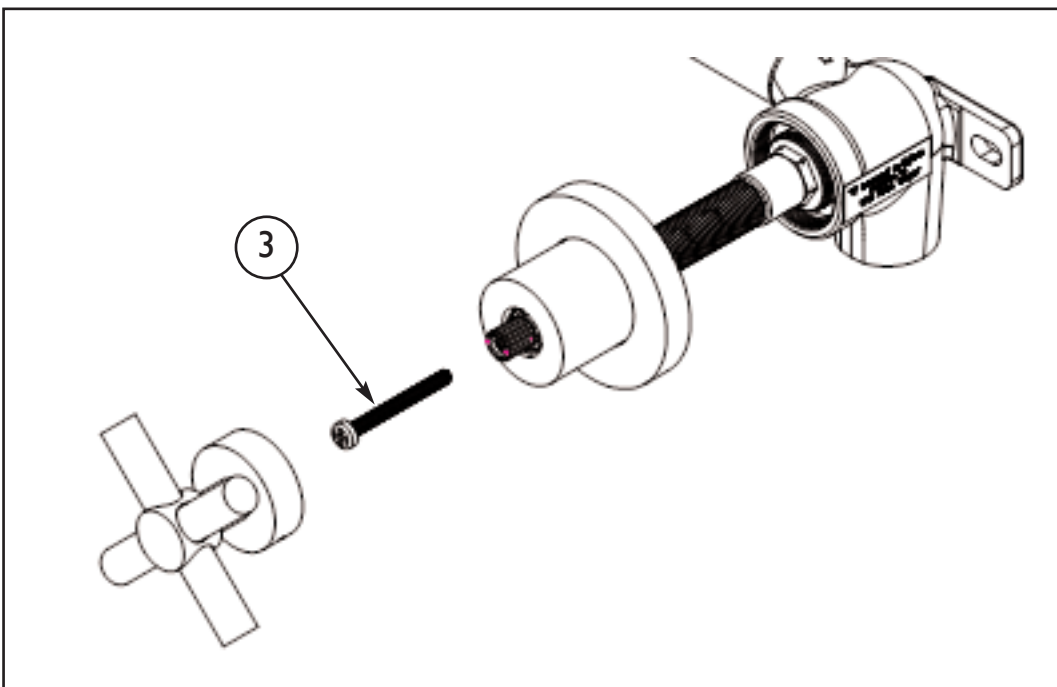
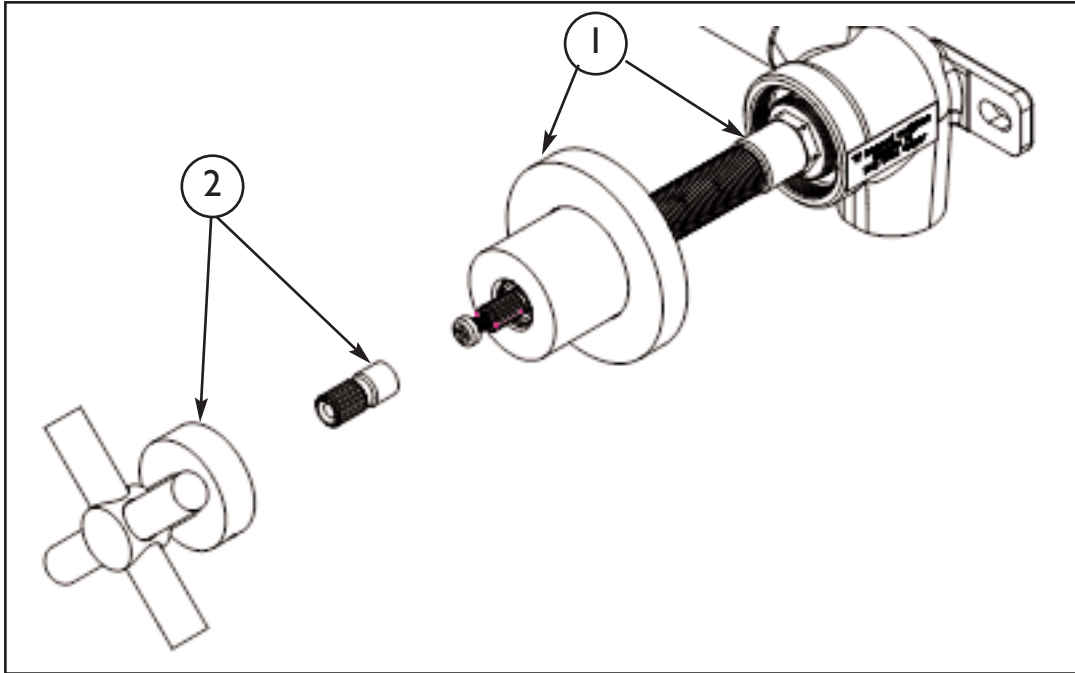
## 2. Trim Installation

1. Temporarily install handle onto adapter and measure distance between top of escutcheon and base of handle.
2. Add 1/16" to the measured distance in the previous step.
3. Disassemble components again to trim the sum (sum = step 1 distance + 1/16") from the 20 tooth cartridge stem length.

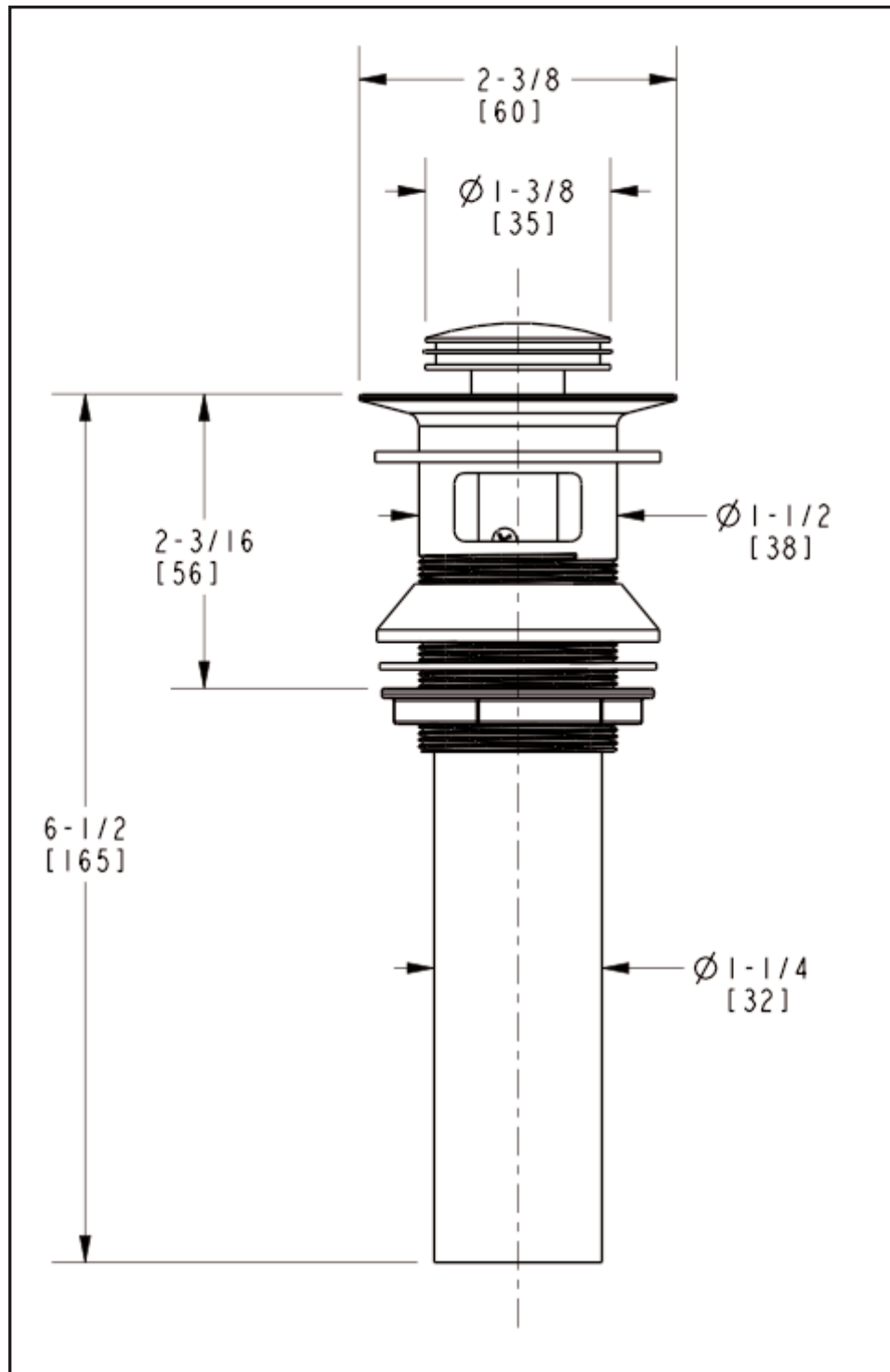


# 3. Handle Adjustment

1. Re-Install all thread nipple base ring & escutcheon onto newly trimmed cartridge.
2. Place adapter and handle onto cartridge. Check alignment. As required, remove handle and rotate adapter 1 tooth clockwise (18 degrees), and recheck alignment. Repeat until handle is aligned.
3. Once achieved, remove handle from adapter (do not remove adapter from cartridge). With screw provided secure adapter to cartridge. Reattach handle to adapter and secure in place with set screws.

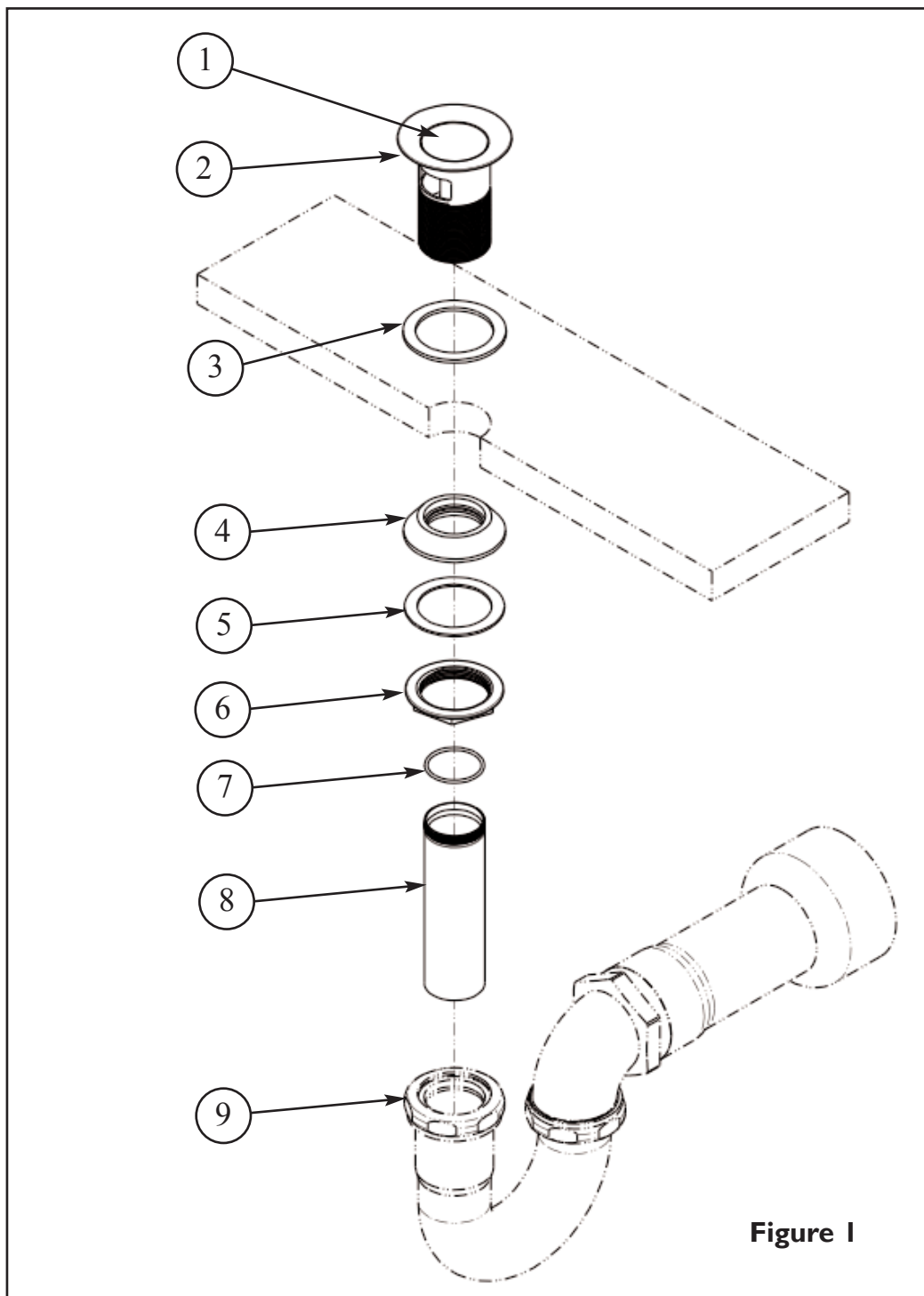


# Restoration Hardware Lavatory Drain Specification Diagram



Dimensions are in Inches and Approximation of a Typical Installation

- Do not remove drain PLUG (1) from FLANGE (2). Place FLANGE (2) and white WASHER (3) through sink drain opening. (Clear silicone may be used in place of white washer.) From bottom side of sink, place cone shaped rubber WASHER (4) onto FLANGE (2) and slide up against sink bottom. Note: Cone portion of WASHER (4) to face upward. Next slide on clear flat WASHER (5) and secure with flange NUT (6). Assemble O\_RING (7) to TAILPIECE (8) and attach to drain FLANGE (2). Attach TAILPIECE (8) to p-trap drain (9) (not included). See Figure 1.



**Figure 1**

## Care and Cleaning

The lustrous finish on your Restoration Hardware Bathware fixture should be treated with care. Improper handling or cleaning can damage the surface of any metal finish. Use a soft cloth to wipe clean. Avoid harsh abrasive cleaner. Water contains lime and other mineral deposits that will be left on the surface after the water has evaporated. You can prevent these deposits from forming by always wiping the fixture dry immediately after use.

## Technical Support and Customer Service

For technical support in the installation of your Restoration Hardware Bathware fixture, please call 1-866-417-5207 weekdays between the hours of 7:00am and 4:00pm PST.

For other questions regarding your order, to order additional components of the Restoration Hardware Bathware Collection, to order replacement parts, or to address warranty issues, please contact Restoration Hardware Customer Service at 1-877-747-4671.