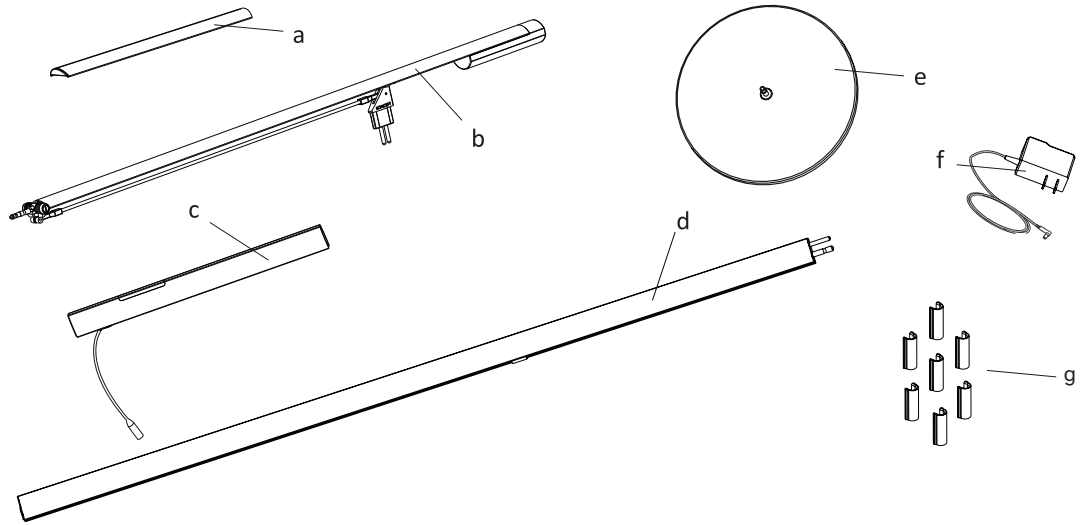


RH

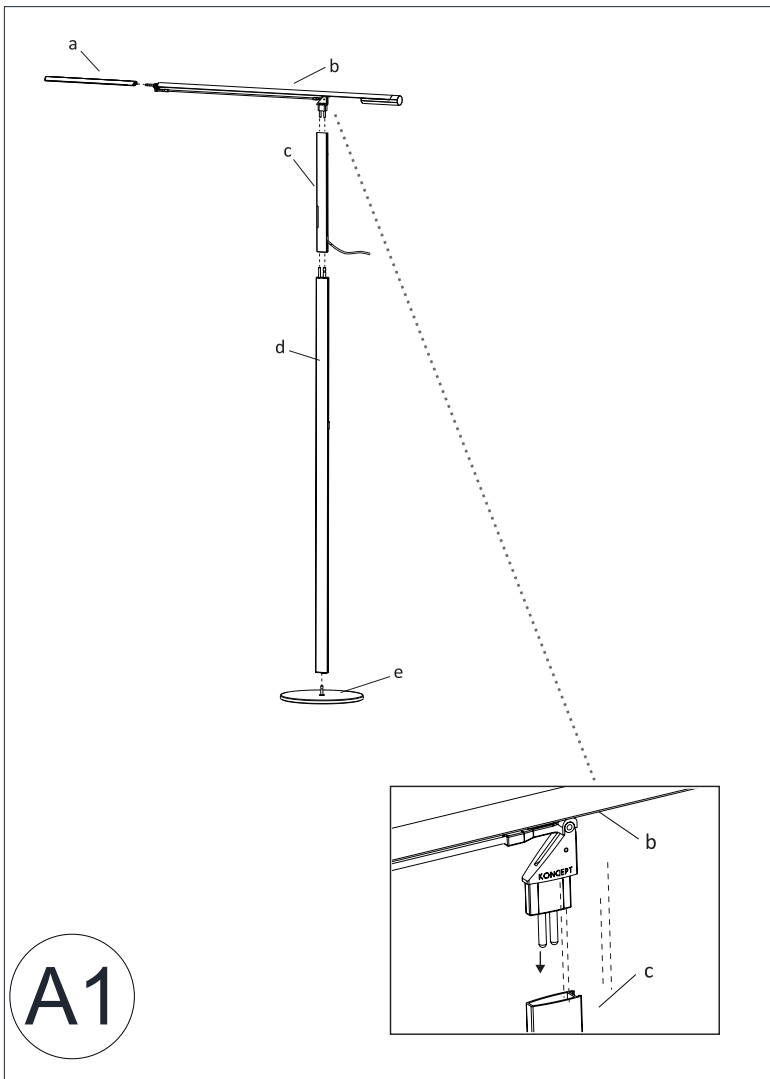
EQUO FLOOR LAMP

PARTS ENCLOSED

- (A) LED head
- (B) Floating arm
- (C) Upper body
- (D) Lower body
- (E) Floor base
- (F) Transformer
- (G) Cord clips

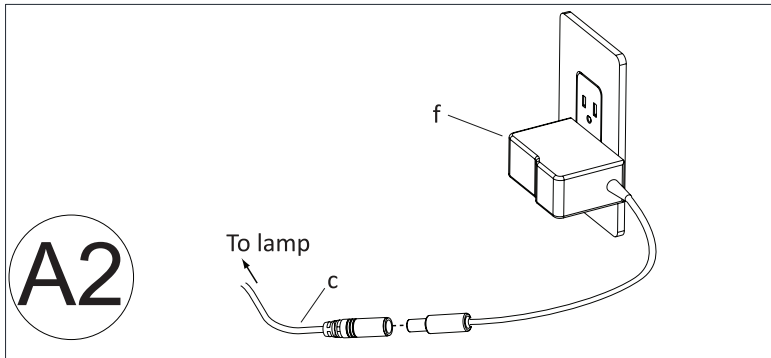


ASSEMBLY

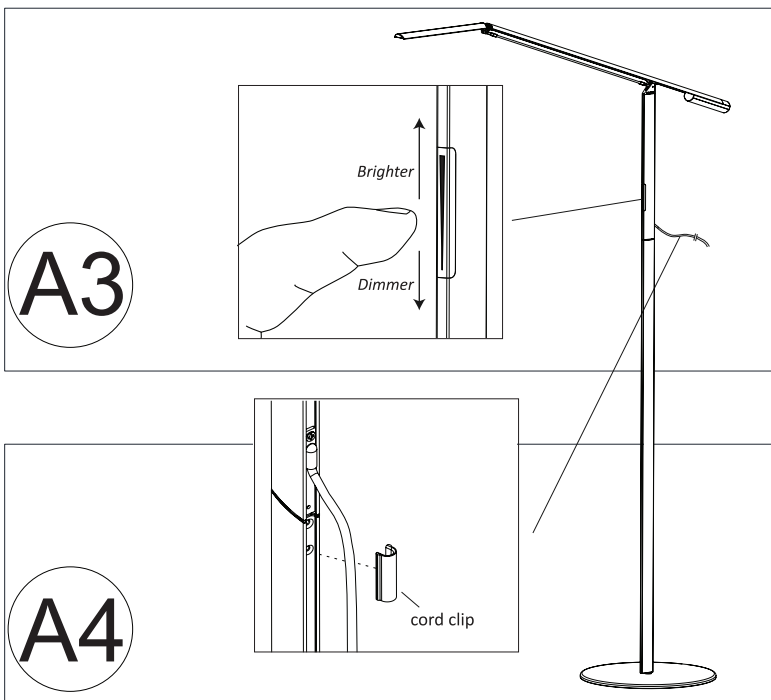


1. Push figure A into B, B into C, C into D and D into the base (E).

EQUO FLOOR LAMP



2. Plug the transformer cord into the upper body cord (C) and plug the transformer into your outlet.



3. Use the touchstrip to control brightness and power.

4. Route the cord through the cord channel at the back of the lower lamp body. Secure it with the provided cord clips (G): insert one side of the cord clip over the cord and into the channel, then squeeze it so that the other side fits in snugly. Use as many as you like to keep the cord flush against the lamp body.

IMPORTANT SAFETY INSTRUCTIONS

To reduce the risk of fire, electric shock or injury:

- Do not use outdoors or near water
- Do not handle plug or appliance with wet hands
- Do not stare directly at the LEDs

WARNINGS

Do not use an external dimmer with this lamp. Doing so may cause damage to the product.

Overheating may result in reduced LED lifespan. To avoid overheating:

- Keep out of direct sunlight
- Remove plastic bag from lamp before use

Recommended ambient temperature: under 77° F

TROUBLESHOOTING

If the lamp does not turn on, unplug the lamp and ensure all parts are fully inserted into each other and all connections are flush.

Very firmly push down on the "T" intersection made by the floating arm and vertical body. Plug the lamp back into the power supply and turn on.

If problem persists, please email support@koncept.com with your issue.