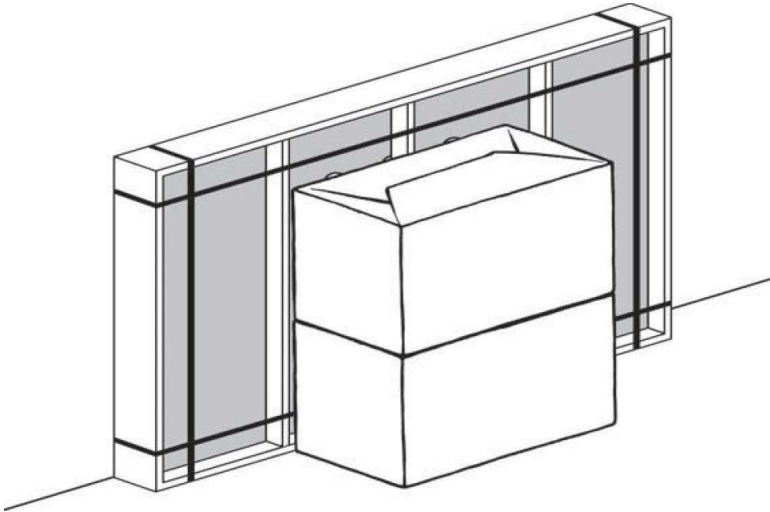
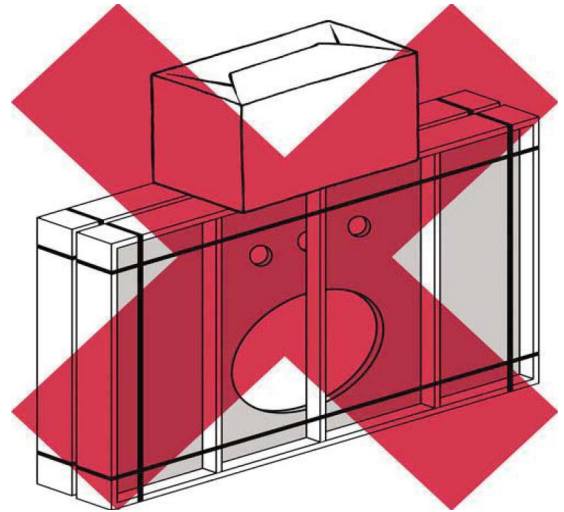


### CRATE STORAGE



- Keep stone top in it's crate until installation
- Store crate vertically in a safe location



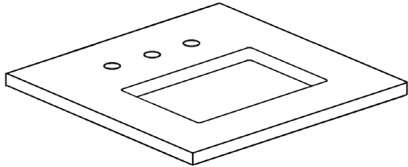
- Do not stack anything on top of crate

### TOOL AND MATERIAL REQUIREMENTS

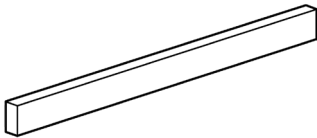
- Flat, non-abrasive work surface (blanket or smooth cardboard)
- Sealant
- Phillips-head screwdriver
- Carpenter's level

## PARTS LIST

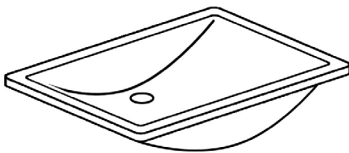
A. Stone Top



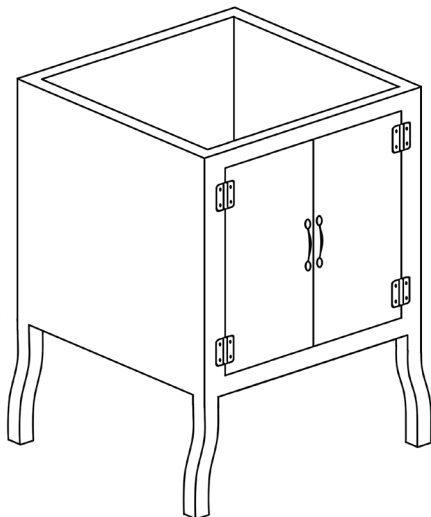
B. Backsplash



C. Basin



D. Vanity Base



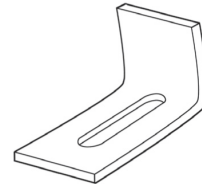
E. Calk in anchor (x4)



F. Calk in anchor sleeve (x4)



G. "L" Bracket (x4)



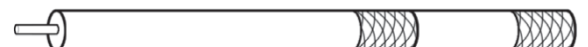
H. Washer (x4)



I. Screw (x4)

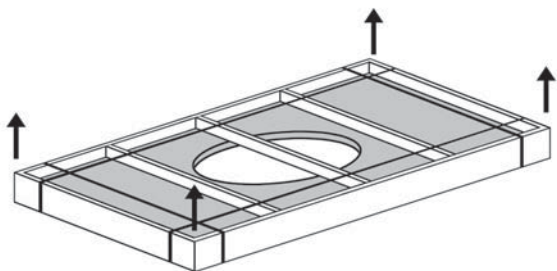


J. Setting tool

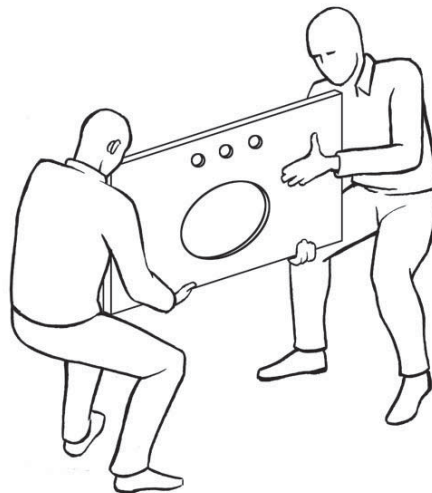


### STONE TOP UN-PACKING AND TRANSPORT

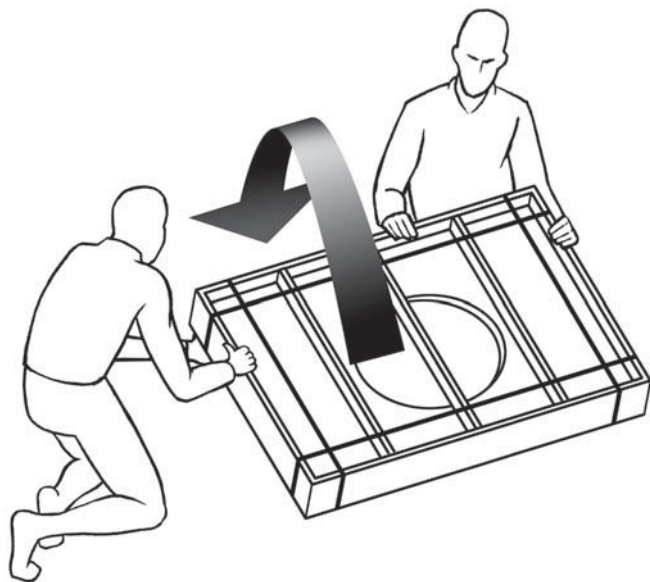
WHEN MOVING STONE TOP, ALWAYS USE A TWO-MAN CREW



Remove metal bands, unscrew the slats or lid, and lift the Stone Top out of the crate.



Always carry Stone Top vertically

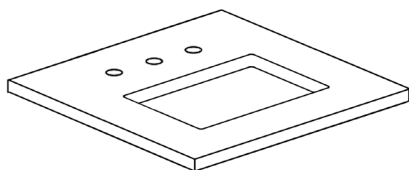


Carefully, without allowing any freefall, rotate the crate from vertical to flat.



Do not carry Stone Top horizontally as it increases the risk of breakage or cracking.

### STONE TOP INSPECTION



Inspect the Stone Top for cracks or defects. If defects are detected, do not install and please call 877-777-7059. If no defects are detected; clean Stone Top with a soft cloth.

### CLEANING AND MAINTENANCE INSTRUCTIONS

- Avoid abrasive and harsh chemical cleaners.
- RH Stone Tops have a honed finish, hand polished edges, and are sealed twice with inert silicone sealant
- Stone Tops should be re-sealed annually

### PRIMARY INSTALLATION REQUIREMENTS:

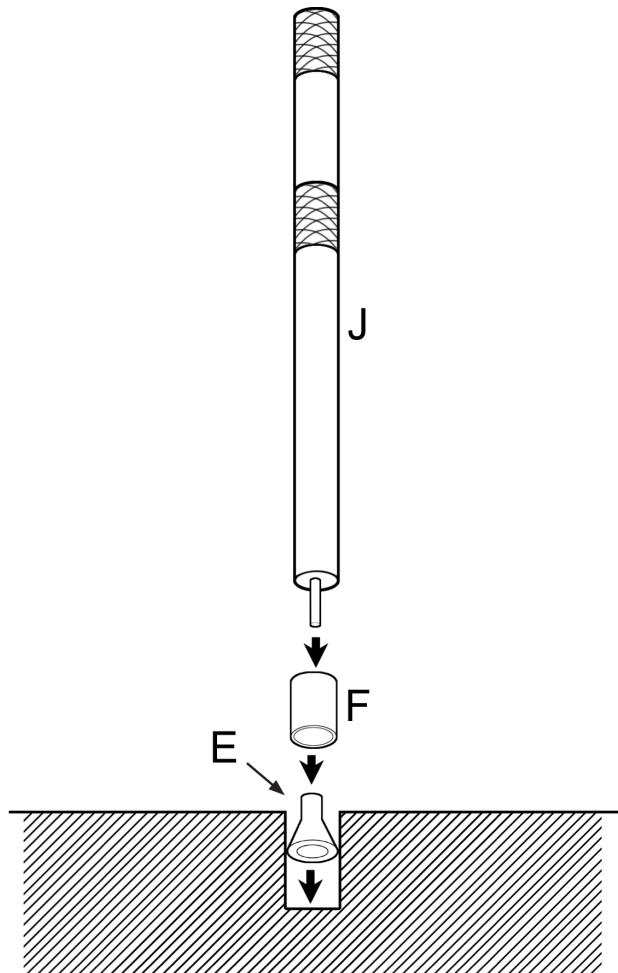
- Professional two-man crew.
- Water supply and drain piping installed according to local plumbing and building codes (sold separately).
- Wall and floor are square and plumb at installation site.
- Vanity Base installed square and plumb with wall and floor. Vanity Base also needs to be level.
- Ensure Stone Top is the correct size to match the Vanity Base.

### WARNINGS:

- Do not over-tighten parts during assembly
- Make final adjustment of set screws after installation
- The washstand may not be appropriate for locations with small children
- The foot pins must be recessed into finished floor in order to reduce stress on the rods.

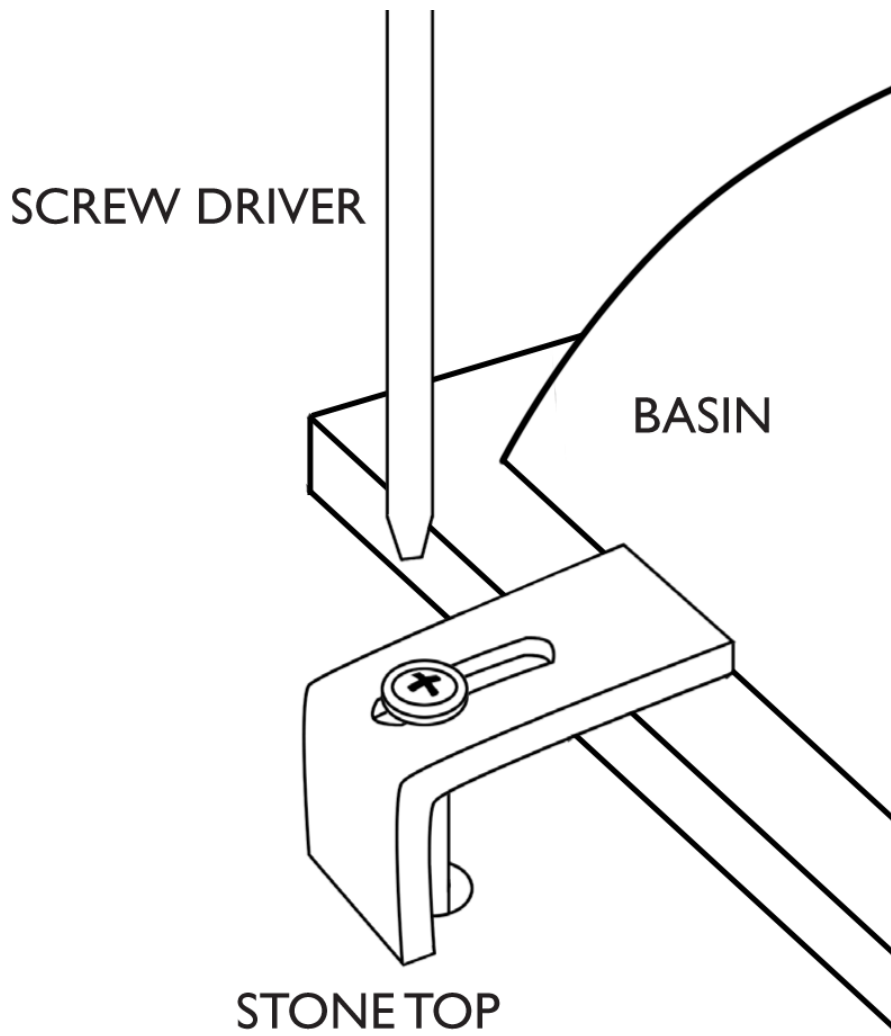
### ASSEMBLY INSTRUCTIONS:

1. Place stone top upside down on a flat, nonabrasive work surface. Using the setting tool (J), hammer calk-in anchors (E) straight into pre-drilled holes on the underside of stone top. (See illustration.)



### ASSEMBLY INSTRUCTIONS CONT'D:

2. Apply a continuous bead of sealant to the top surface of the rim of the basin (B) where it will contact the underside of the stone top. Position the basin in its final location upside down on the underside of the stone top. Overflow of the basin should be positioned toward the front of the vanity.
3. Place four "L" brackets (N) with long sides over the basin rim and insert screws (P) through washers (O) and "L" brackets. Screw into calk-in anchors with a screwdriver. (See illustration.) (Do not over-tighten.) Ensure that the basin is securely attached to the stone top.
4. Using two people, turn stone top with attached basin over and position carefully on top of washstand base.



### STONE TOP INSTALLATION



**Caution! Installation between two walls requires special care.**

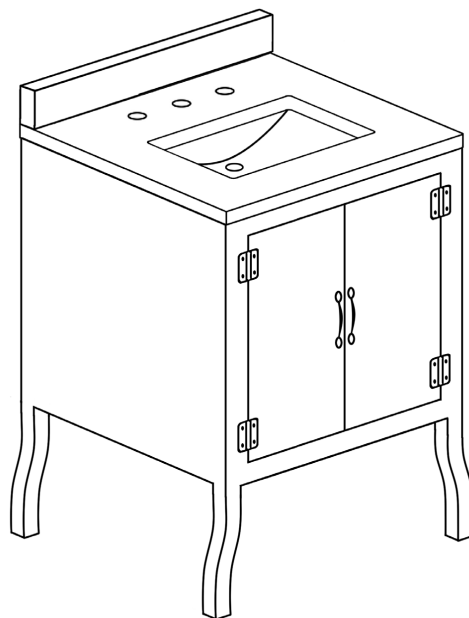
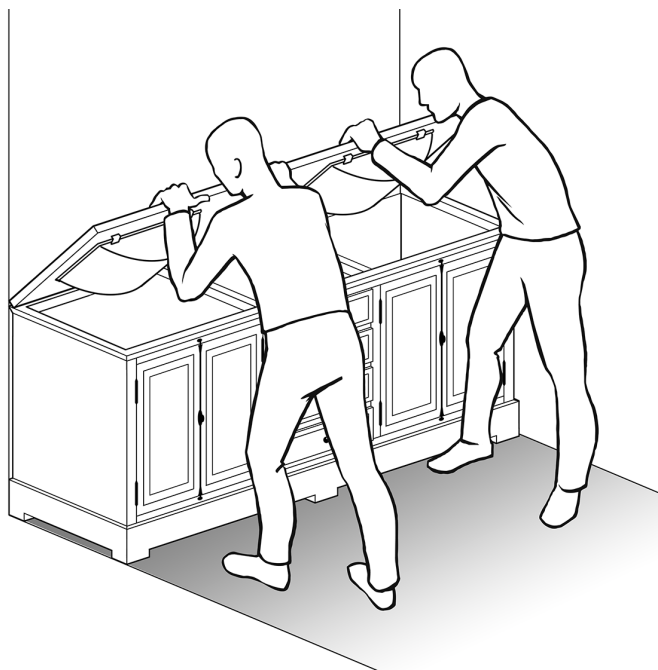
If installing Stone Top between two walls, stop here and follow the next set of instructions.

#### Standard Stone Top Installation Guidelines

1. Apply a continuous bead of sealant to the top face of the Sink Basin [C] rim where the Stone Top [A] makes contact with the basin.
2. Using a two-man crew, lift stone top and set in on top of the Vanity Base [D].
3. Apply Silicone sealant at the seam where Backsplash [B] meets the wall.
4. Adjust set screws as needed for stability of the washstand, continuing to take care not to over-tighten,

#### Stone Top Installation Between Two Walls

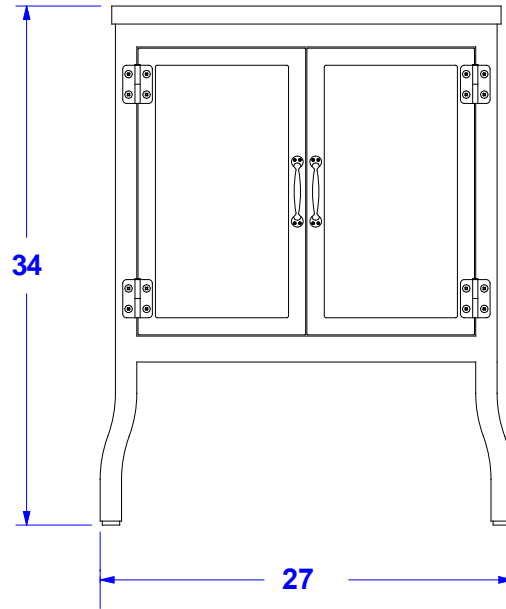
1. Apply a continuous bead of sealant to the top face of the Sink Basin [C] rim where the Stone Top [A] makes contact with the basin.
2. Using a two-man crew, lift stone top and set it's rear edge on the back of the Vanity Base [D] (closest to rear wall) -- see below illustration.
3. Lower front of Stone Top onto the vanity base, making sure both ends are lowered at the same rate.
4. Do not shimmy, twist, or turn the stone top while lowering as this increases the risk of breakage.
5. Apply Silicone sealant at the seam where Backsplash [B] meets the wall.
6. Adjust set screws as needed for stability of the washstand, continuing to take care not to over-tighten,



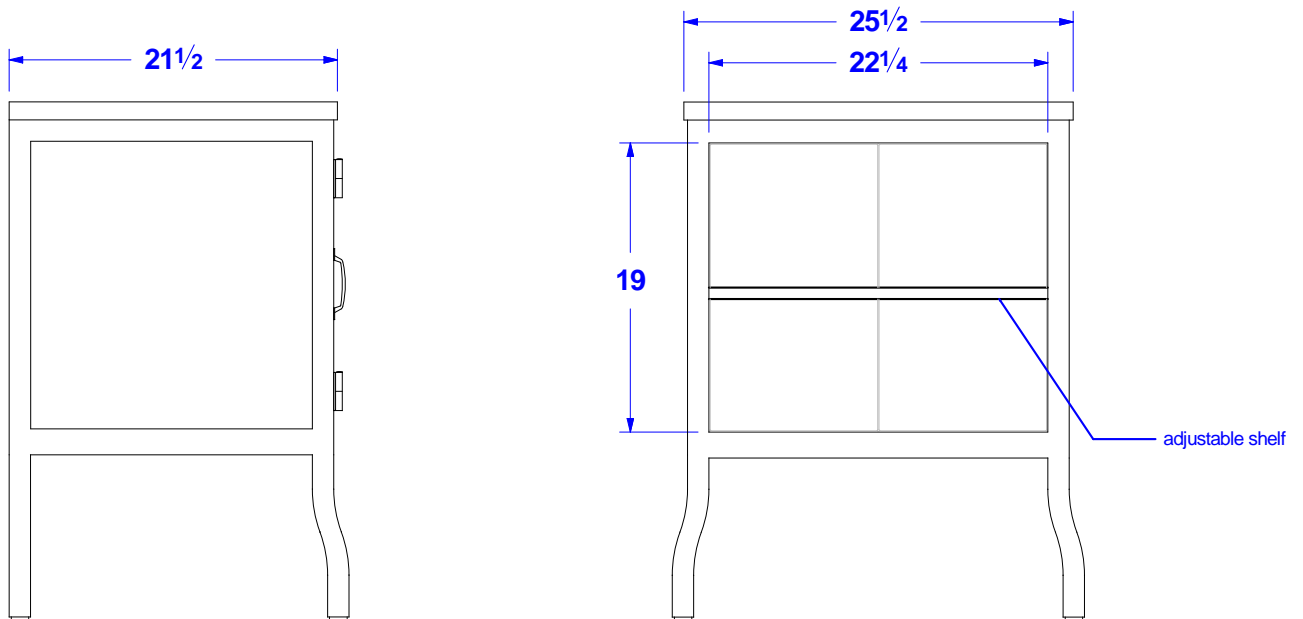
# RH

## PHARMACY POWDER VANITY

---

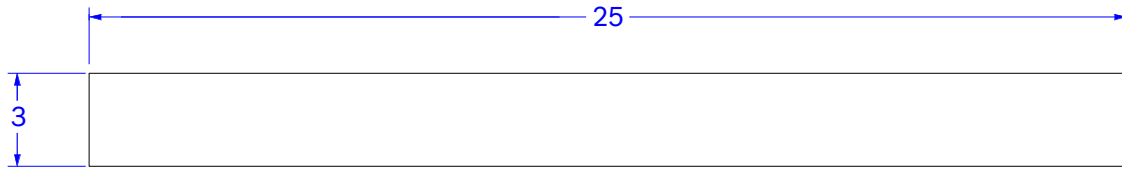


Front View

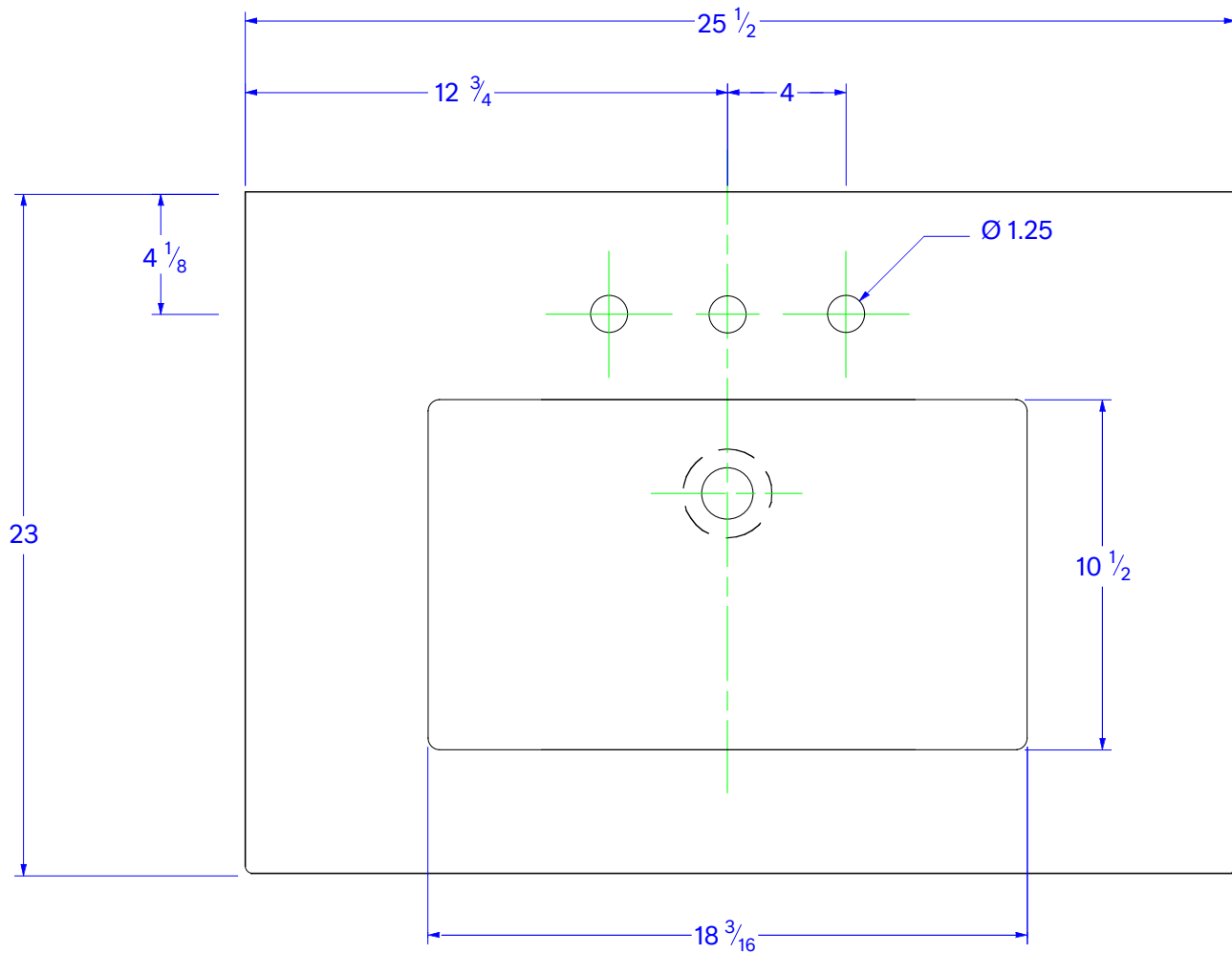


Side View

Back View



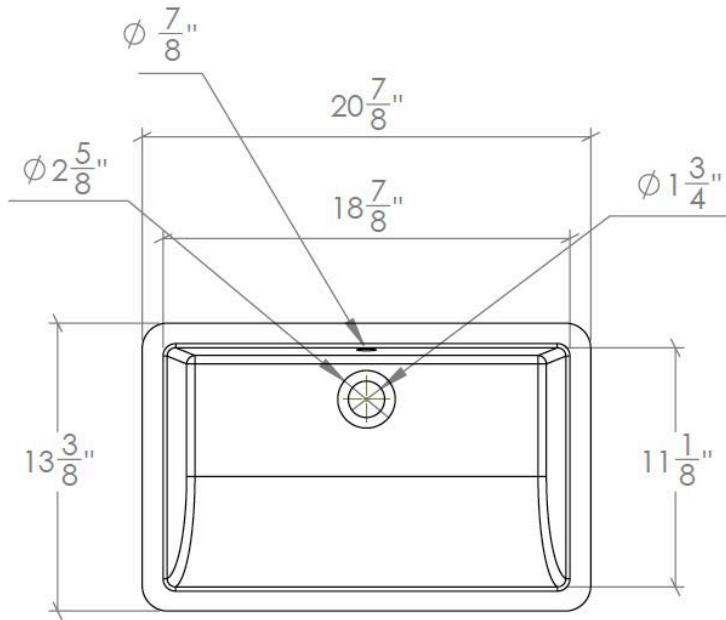
FRONT ELEVATION OF BACK SPLASH



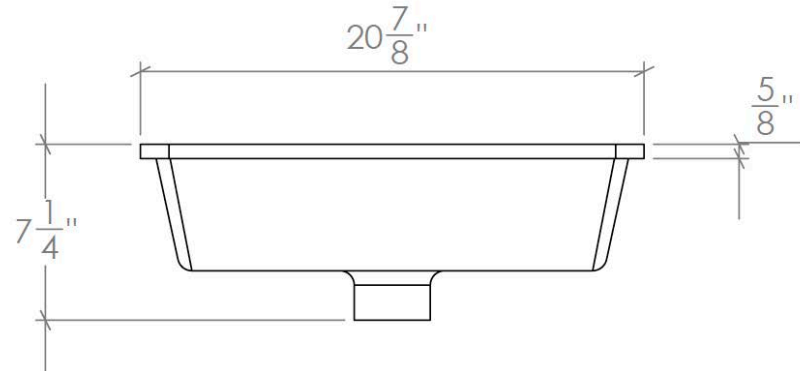


# RH

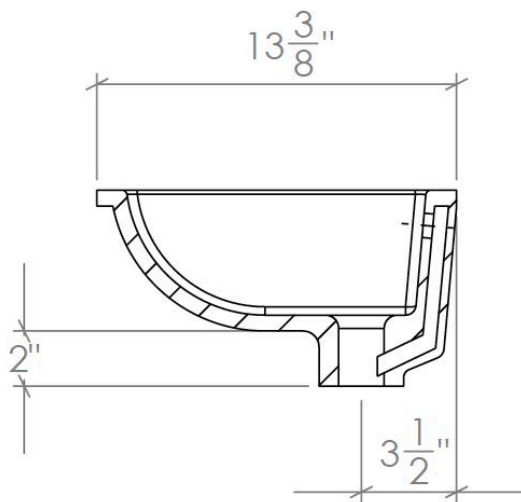
## PHARMACY POWDER VANITY



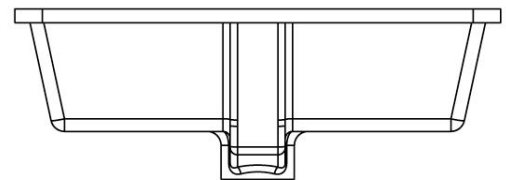
Top View



Left View



Side View



Back View

### RECTANGULAR BASIN

DRAWINGS REPRESENT ORIGINAL DESIGN SPECIFICATIONS. ACTUAL PRODUCT DIMENSIONS MAY VARY SLIGHTLY. ALL DIMENSIONS ARE REPRESENTED IN INCHES. PROFESSIONAL INSTALLATION IS REQUIRED.  
Unless otherwise noted, all design and content, images, artwork, graphics, photography, text, and the like are copyrights, trademarks, trade dress, and/or intellectual property that are owned, controlled, or licensed by RH.