

# RESTORATION HARDWARE

## DORMER MIRROR LEANER (Assembly Instructions) For Anti Tip Kit Hardware

**Note: This hanging system is meant for dry wall/stud mounting only.** If walls are concrete, brick or plaster, please consult your local hardware store for assistance. For safety and ease of mounting, installation is recommended using two to four peoples.

### Tools needed:

Level, Tape Measure, Stud Finder, #2 Phillips screw driver, Pencil

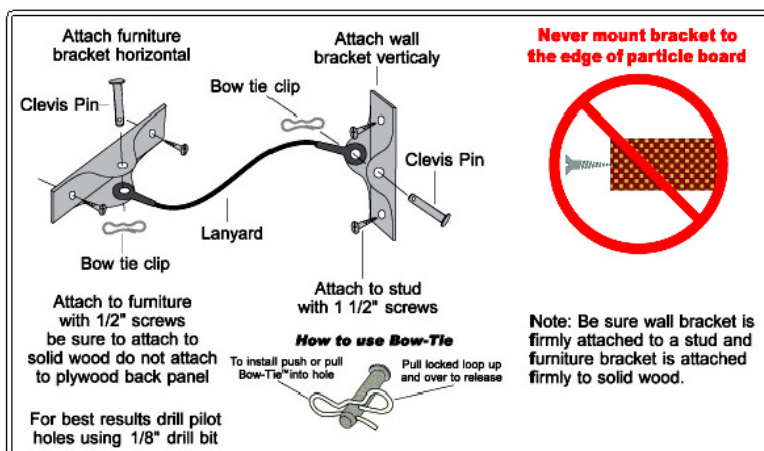
### Hardware Included:

- Hangman Hardware Anti-tip Kit (Marked Hardware 'A' - 02 Sets)
- Hangman Hardware Anti-tip Kit (Marked Hardware 'B' - 01 Set)

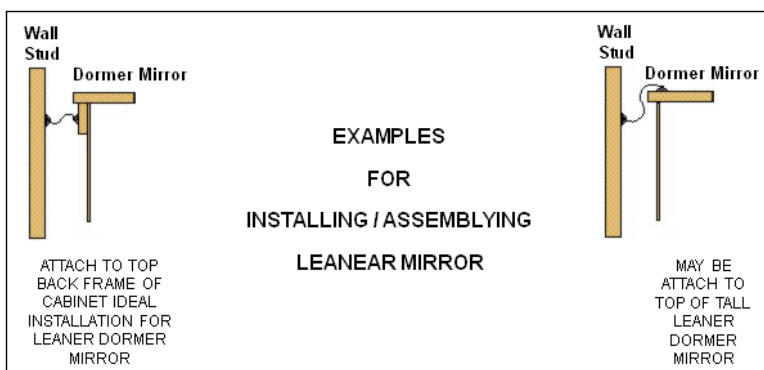
### Mounting Instructions:

1. Determine your desired location.
2. Use a carpenter's level and a tape measure to ensure a level installation.
3. Stud mounting is always best, so try to position the hardware over studs. Use a stud finder to locate a stud in desired location.

Below is the detailed *Instruction for Hardware Installations...*



### Examples of Installations:



The Anti Tip Kit helps keep items from tipping over. It does help to secure objects from sliding off.

*Thank You for Your Purchase*