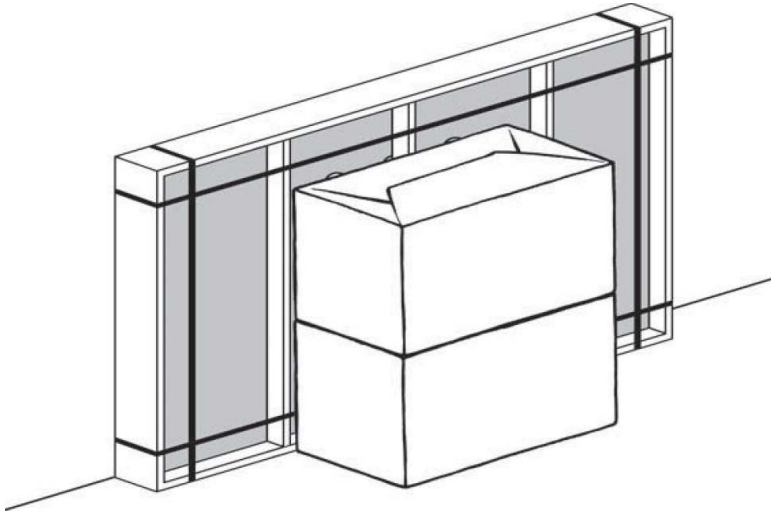
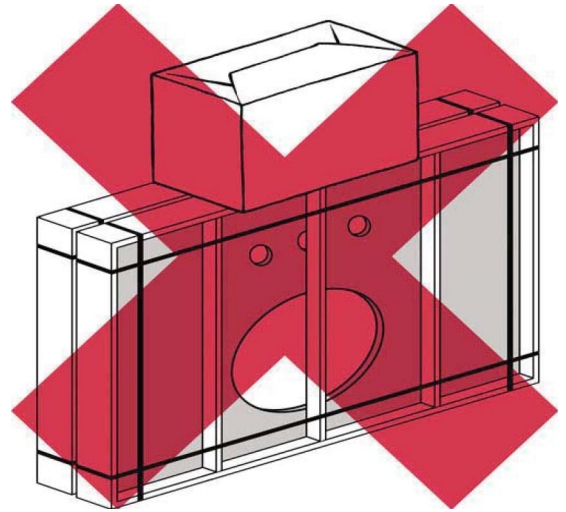


### CRATE STORAGE



- Keep Stone Top in it's crate until installation
- Store crate vertically in a safe location



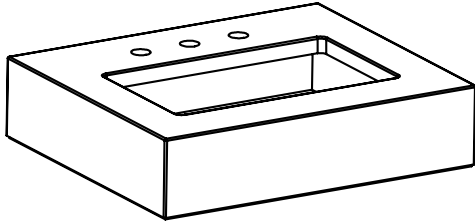
- Do not stack anything on top of crate

### TOOL AND MATERIAL REQUIREMENTS

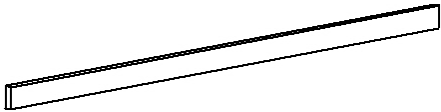
- Flat, non-abrasive work surface (blanket or smooth cardboard)
- Sealant
- Phillips-head screwdriver
- Carpenter's level
- Utility blade

## PARTS LIST

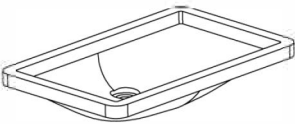
**A. Stone Top (Oval or Rectangular)**



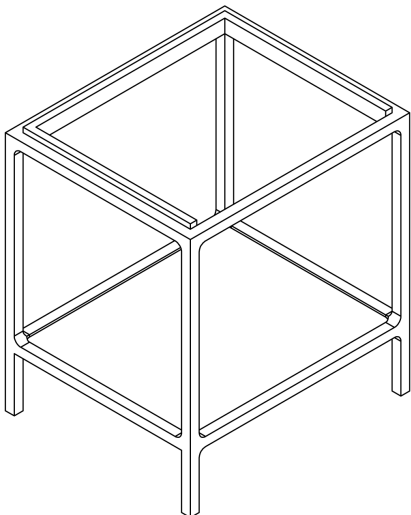
**B. Backsplash (Sold Separately)**



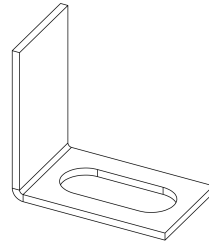
**C. Basin (Oval or Rectangular)**



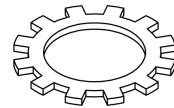
**D. Vanity Base**



**E. Mounting Bracket (x4)**



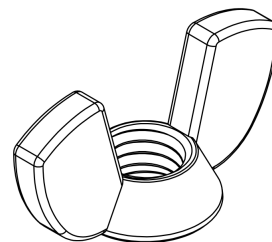
**F. Lock Washer (x4)**



**G. Threaded Rod (x4)**

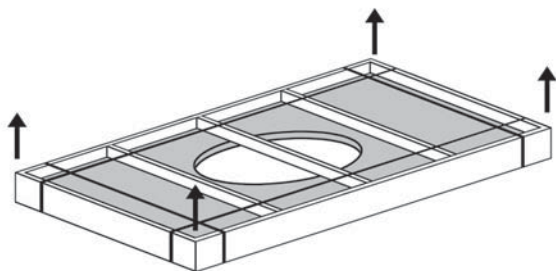


**H. Wing Nut (x4)**

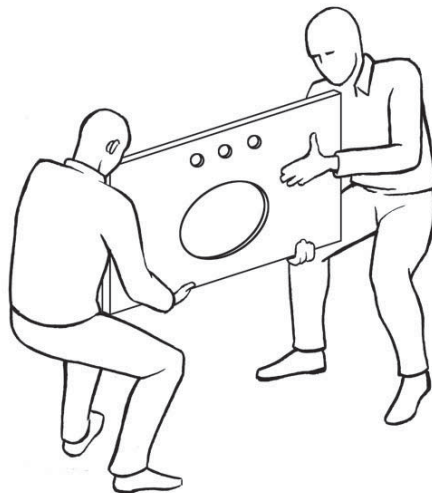


### STONE TOP UN-PACKING AND TRANSPORT

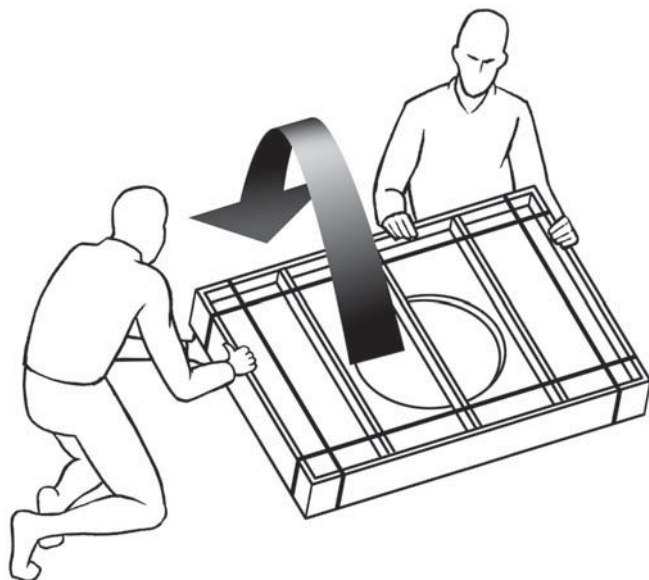
WHEN MOVING STONE TOP, ALWAYS USE A TWO-MAN CREW



Remove metal bands, unscrew the slats or lid, and lift the Stone Top [ A ] out of the crate.



Always carry Stone Top [ A ] vertically

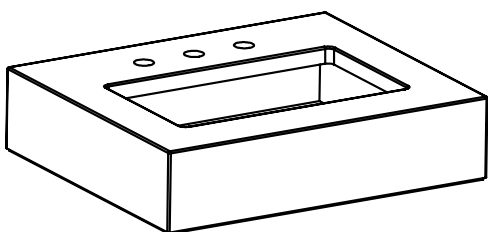


Carefully, without allowing any freefall, rotate the crate from vertical to flat.



Do not carry Stone Top [ A ] horizontally as it increases the risk of breakage or cracking.

### STONE TOP INSPECTION



Inspect the Stone Top [ A ] for cracks or defects.  
If defects are detected, do not install and please call 877-777-7059.  
If no defects are detected; clean Stone Top [ A ] with a soft cloth.

#### CLEANING AND MAINTENANCE INSTRUCTIONS

- Avoid abrasive and harsh chemical cleaners.
- RH Stone Tops [ A ] have a honed finish, hand polished edges, and are sealed twice with inert silicone sealant
- Stone Tops [ A ] should be re-sealed annually

### STONE TOP INSTALLATION



**Caution!** Installation between two walls requires special care.

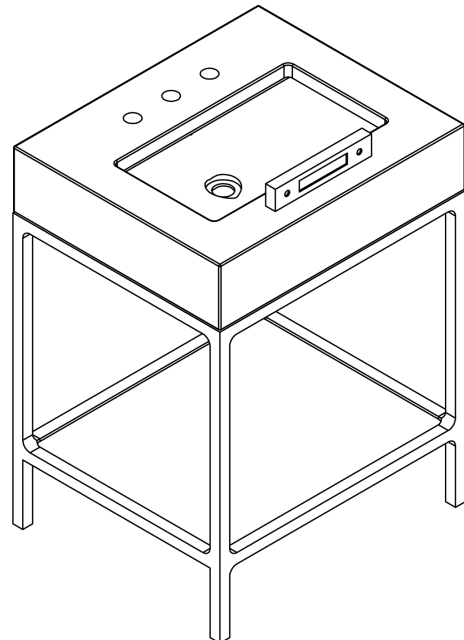
- If installing Stone Top [ A ] between two walls, stop here and follow the next set of instructions.

#### Standard Stone Top Installation Guidelines

1. Apply a continuous bead of sealant to the top face of Sink Basin [ C ] rim where the Stone Top [ A ] makes contact with the Sink Basin [ C ].
2. Using a two-man crew, lift Stone Top [ A ] and set it on top of Vanity Base [ D ].
3. Apply silicone sealant at seam where Backsplash [ B ] meets the wall.  
(see illustration below).

#### Stone Top Installation Between Two Walls

1. Apply a continuous bead of sealant to the top face of Sink Basin [ C ] rim (where the Stone Top [ A ] makes contact with the Sink Basin [ C ]).
2. Using a two-man crew, lift Stone Top [ A ] and set it's rear edge on the back of the Vanity Base [ D ] (closest to rear wall) -- see illustration below.
3. Lower front of Stone top onto the Vanity Base [ D ] - make sure both ends are lowered at the same rate.
4. Do not shimmy, twist or turn the Stone Top [ A ] while lowering as this increases the risk of breakage!
5. Apply silicone sealant at seam where Backsplash [ B ] meets the wall.  
(see illustration below).

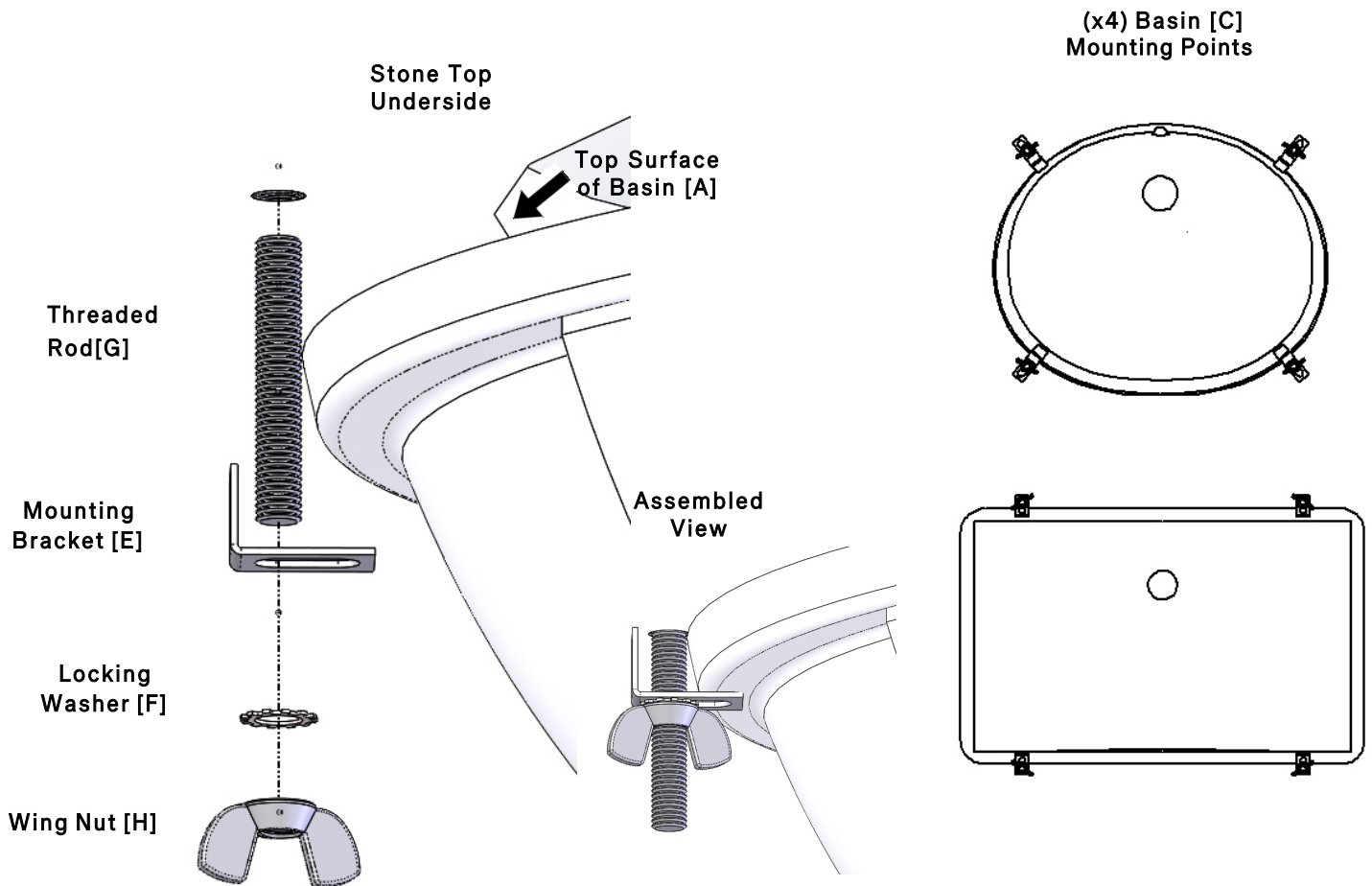


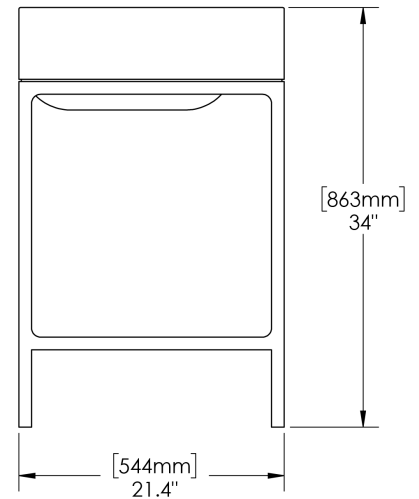
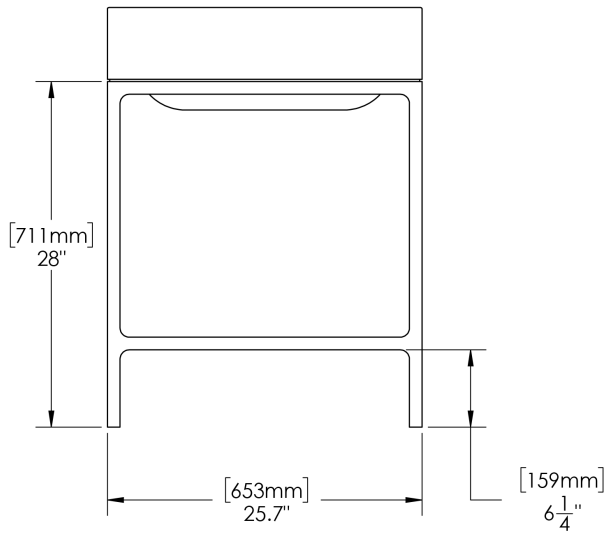
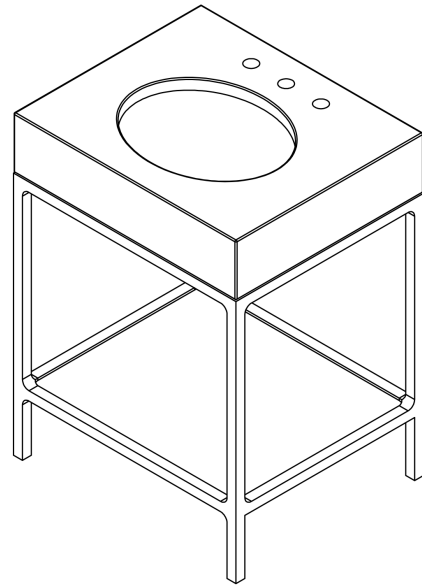
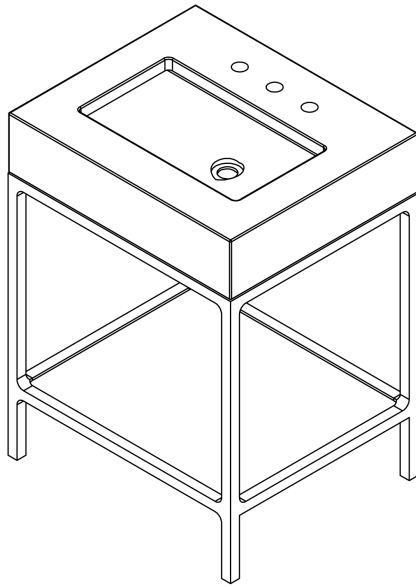
### PRIMARY INSTALLATION REQUIREMENTS:

- Professional two-man crew.
- Water supply and drain piping installed according to local plumbing and building codes (sold separately).
- Wall and floor are square and plumb at installation site.
- Vanity Base [D] installed square and plumb with wall and floor. Vanity Base [D] also needs to be level.
- Ensure Stone Top [A] is the correct size to match the Vanity Base [D].

### BASIN INSTALLATION STEPS:

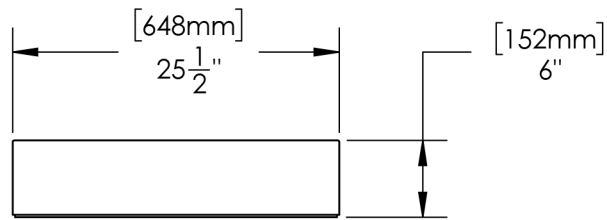
1. Apply a continuous bead of silicone sealant to the top surface of lavatory basin rim where it comes in contact with underside of Stone Top [A] (see illustration below).
2. Position basin [C] in its final location and secure Mounting Bracket under the basin [C] lip. Make sure overflow of basin [C] is located on the same side as the pre-drilled faucet holes in Stone Top [A].
3. Align Threaded Rod [G], Lock Washer [F] and Wing Nut [H] with pre-installed Stone Top threaded insert and secure on all (4) points with mounting bracket [E].



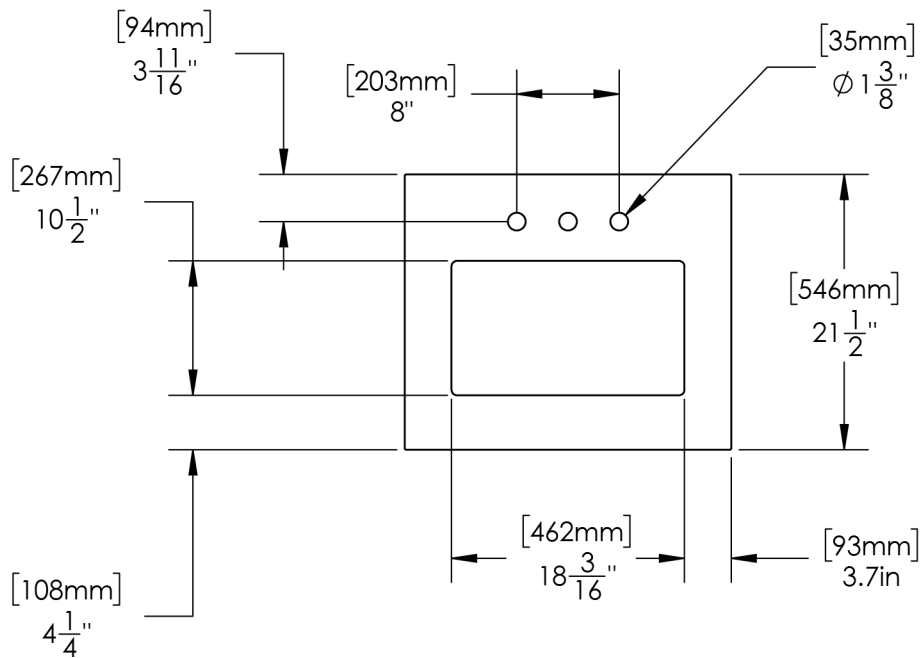


# RH

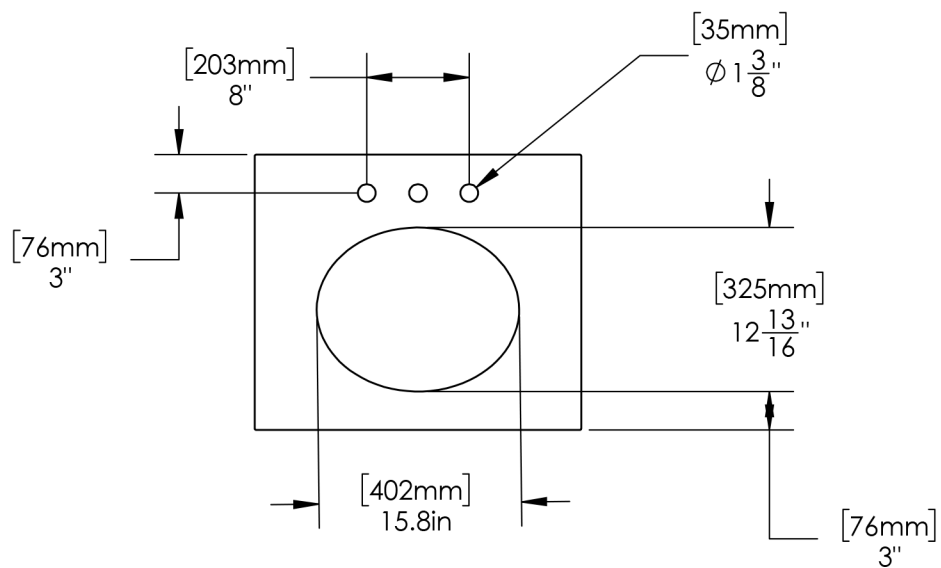
## THADDEUS POWDER WASHSTAND



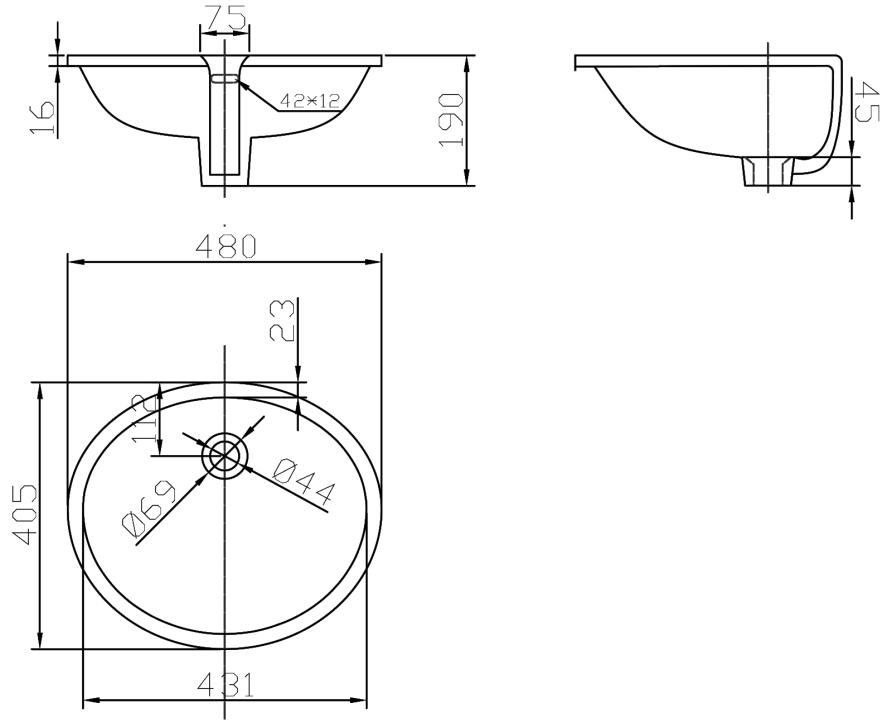
### RECTANGULAR STONE TOP



### OVAL STONE TOP



### RECTANGULAR BASIN



### OVAL BASIN

