


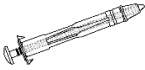

# RH

## ALDEN HOOK

### PARTS INCLUDED

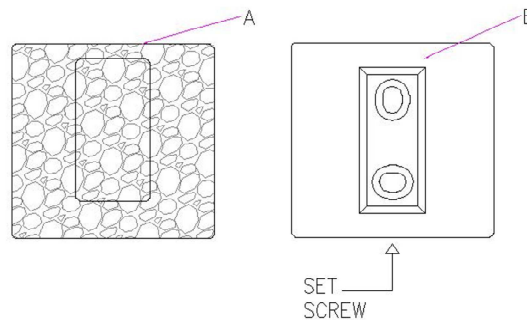
- A. [1] HOOK
- B. [1] BACK PLATE

### HARDWARE INCLUDED

| NO | ITEM   | DESCRIPTION | QTY.  |
|----|--|-------------|-------|
| 1  |  | Allen Screw | 2 Pcs |
| 2  |  | Wall Anchor | 2 Pcs |
| 3  |  | Allen Key   | 1 Pc  |

### MOUNTING INSTRUCTIONS

1. Position Back Plate (B) on desired location on wall.
2. After positioning on wall, lightly mark outline of cover plate.
3. Center the back plate as shown, in outline of post.
4. Mark location of wall anchor installation. Remove back plate from the wall. Position wall anchor and gently tap into wall until cap prongs are embedded in the wall and cap is snug against surface. Turn screw clockwise, pressing firmly to prevent anchor from rotating. Tighten screw until resistance is felt; this will fully expand the anchor. Turn screw counterclockwise to remove screw; anchor will remain embedded in the wall.
5. Place back plate over anchors and reinsert screw. Place Hook (A) over back plate and tighten the set screw.
6. If necessary, loosen wall mounting screw and adjust mounting bracket to obtain proper alignment on the wall. Re-tighten screws and remount cover plate.



### CARE INSTRUCTIONS

1. Periodically wipe the pull with a soft clean cloth.
2. To avoid damaging the protective lacquer finish, do not use abrasive or chemical cleaners.

### IMPORTANT SAFETY INSTRUCTIONS

1. Do not allow children to play with installed hardware.