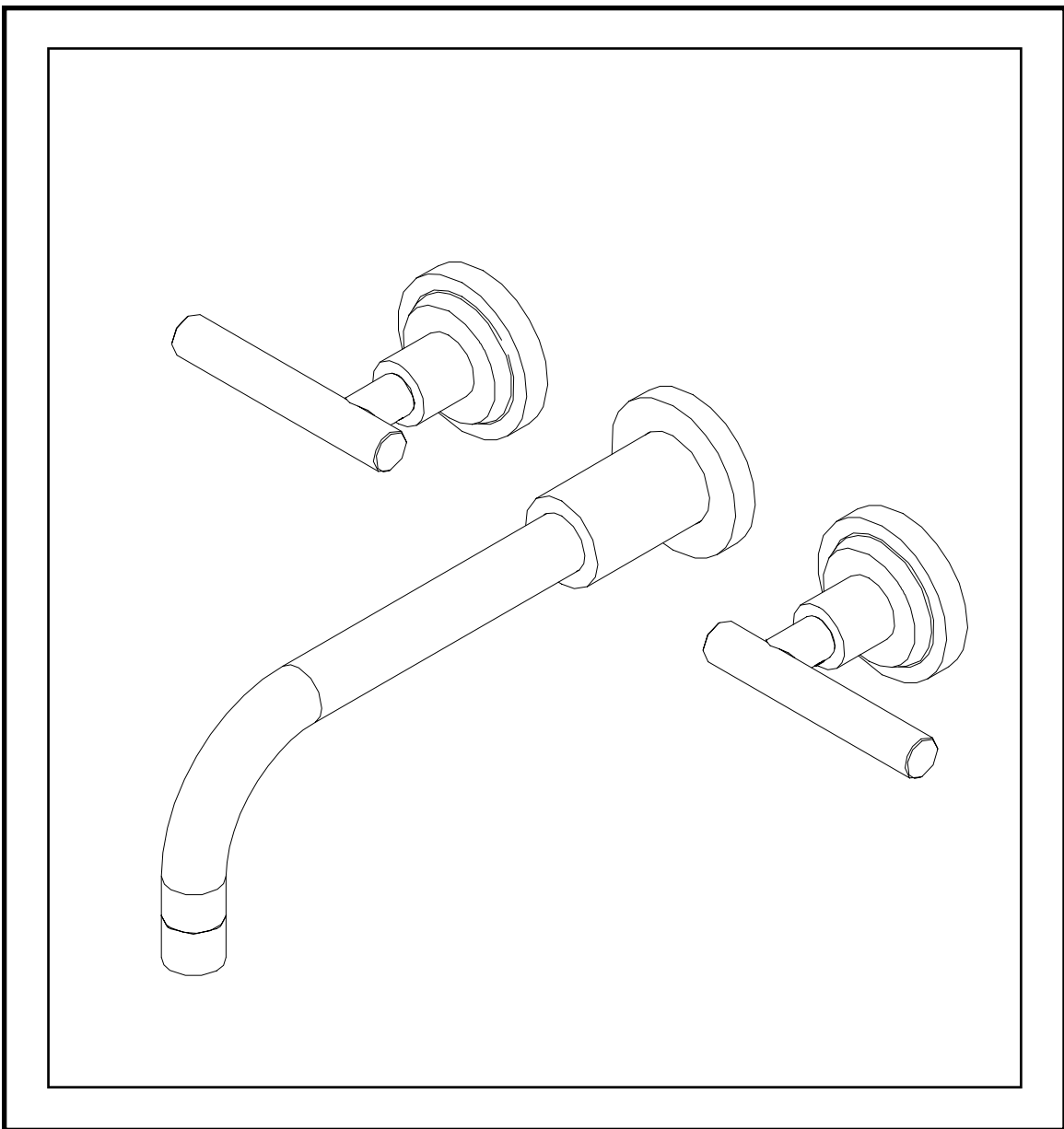


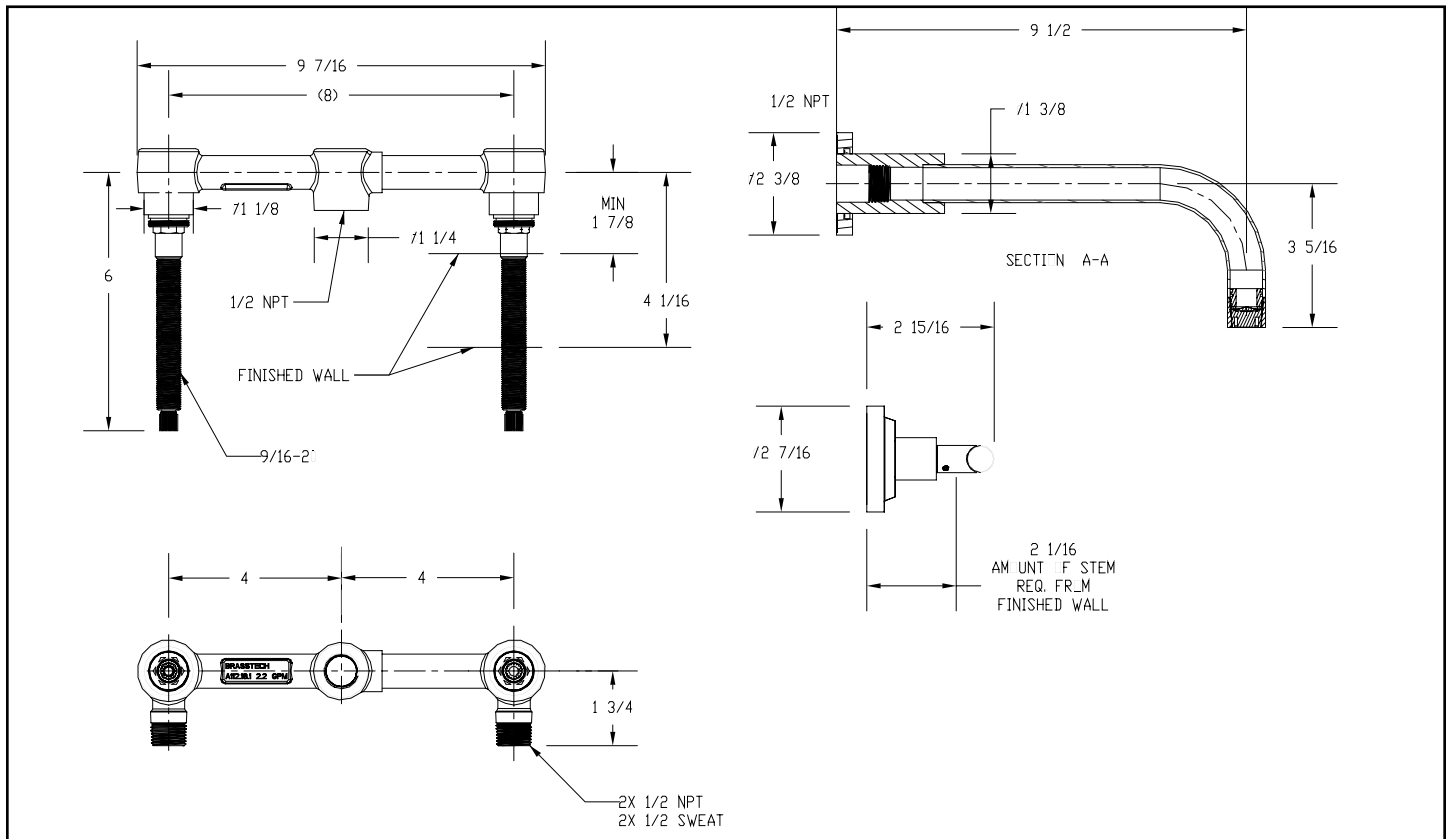


# INSTALLATION INSTRUCTIONS



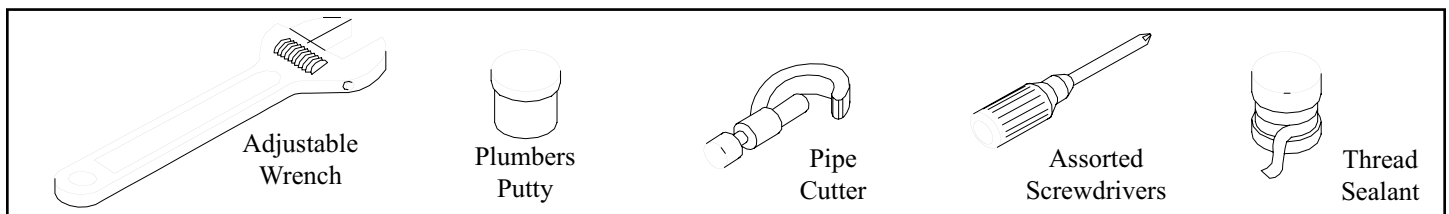
MODEL: SPRITZ  
(RH-5610)

# Restoration Hardware Faucet Product Size Specification Diagram



Dimensions are in Inches and Approximation of a Typical Installation

## Common tools needed:



### We Recommend Installation by a Professional Plumbing Contractor

**Note:** Use Teflon tape or equivalent to seal all threaded port joints.

**Warning:** To prevent severe damage to valve body, any solder/braze process must be performed a min. of 4" from ports.

**Important:** REMOVE CARTRIDGE FROM VALVE BODY (1) PRIOR TO APPLYING ANY HEAT/FLAME.

**Note:** If cartridges are removed during installation, re-torque to factory specification of 14-16 ft-lbs

# 1. Valve Installation

- Utilizing a 1/2" copper supply piping, thread or sweat pipe fittings into inlets of valve BODY(1), (blue STEM (4) is cold, red STEM (5) is hot). If sweating supplies directly to valve inlets, remove cartridges (4 & 5) during this process.

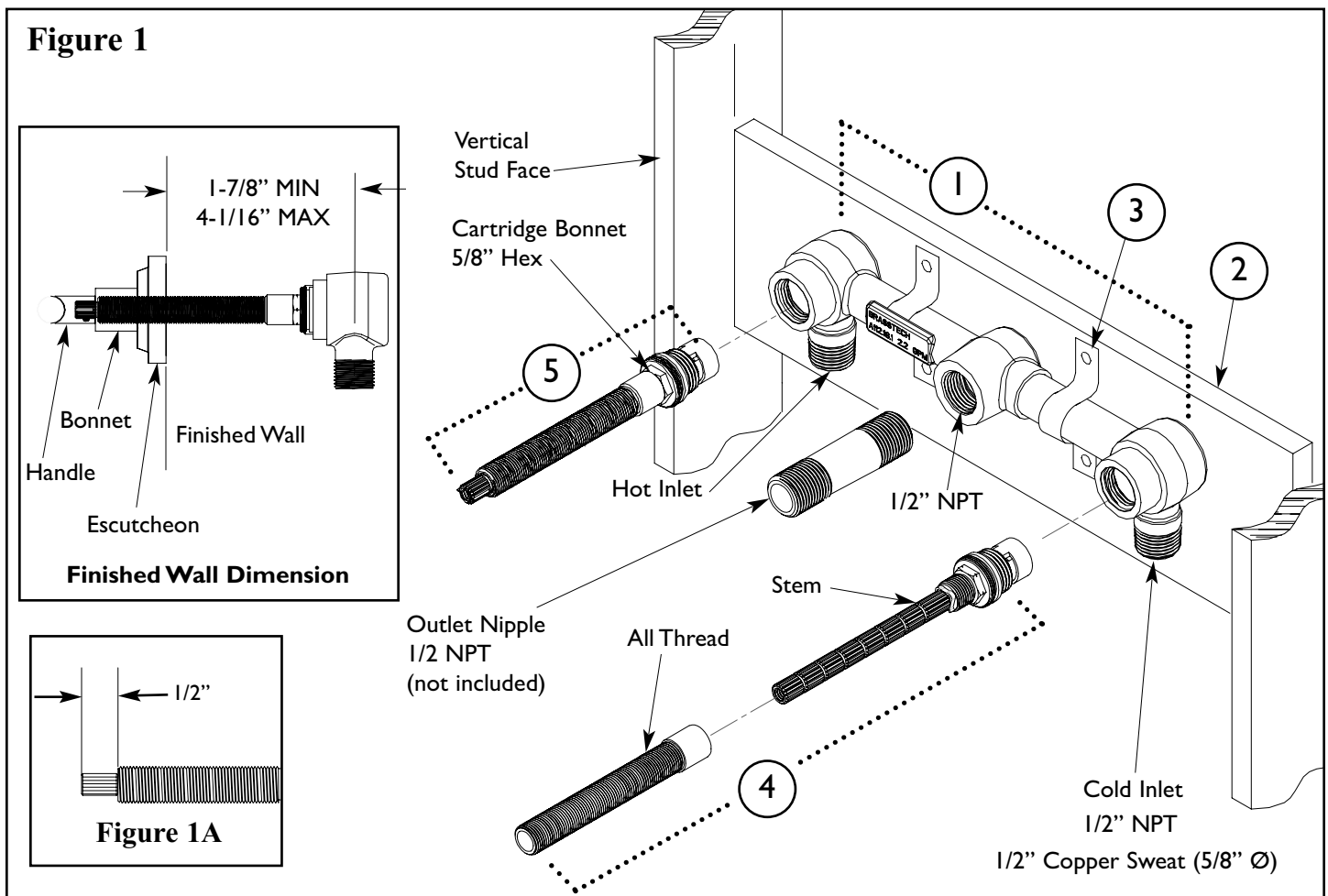
*Note: If cartridges are removed during installation, re-torque to factory specification of 14-16 ft-lbs.*

- Secure valve BODY (1) to cross BRACE (2) using plumbing STRAPS (3), not included.
- Check the horizontal and vertical level of valve BODY (1) by placing bubble level on STEMS (4, 5). Make any necessary adjustments.
- With STEM (4,5) in closed position, turn on water supply, pressurize system and check for leaks.

# 2. Trim Installation

(NOTE: The following step may only be performed after finished wall surface has been completed.)

- Installer shall use appropriately sized 1/2 NPT nipple (not included) to attach spout to valve body. Thread sealant shall be applied to both ends of nipple and be tightened into valve body. Tighten spout (and base ring if supplied) to nipple end protruding from finish wall.
- Cut stem to 2-1/16" from finished wall.
- Cut all thread 1/2" shorter than stem.
- Install escutcheon/bonnet trim and handle.
- Secure handle into place by tightening handle setscrew. Note: To achieve desired handle rotational alignment, the Cartridge **MUST** be tightened in clockwise rotation only. **DO NOT** loosen the cartridge. Factory torque of 14 ft-lbs. minimum, must be maintained.



## Care and Cleaning

The lustrous finish on your Restoration Hardware Bathware fixture should be treated with care. Improper handling or cleaning can damage the surface of any metal finish. Use a soft cloth to wipe clean. Avoid harsh abrasive cleaner. Water contains lime and other mineral deposits that will be left on the surface after the water has evaporated. You can prevent these deposits from forming by always wiping the fixture dry immediately after use.

## Technical Support and Customer Service

For technical support in the installation of your Restoration Hardware Bathware fixture, please call 1-866-417-5207 weekdays between the hours of 7:00am and 4:00pm PST.

For other questions regarding your order, to order additional components of the Restoration Hardware Bathware Collection, to order replacement parts, or to address warranty issues, please contact Restoration Hardware Customer Service at 1-877-747-4671.