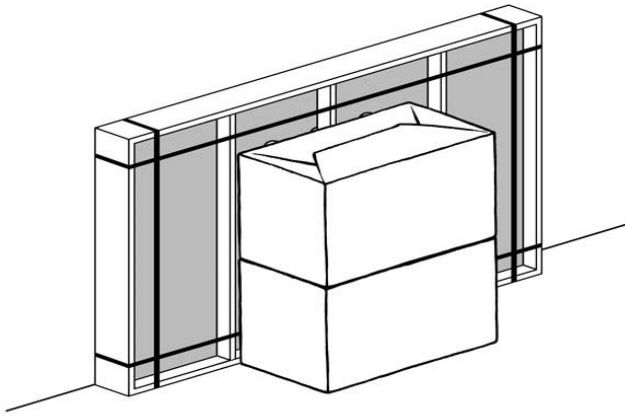
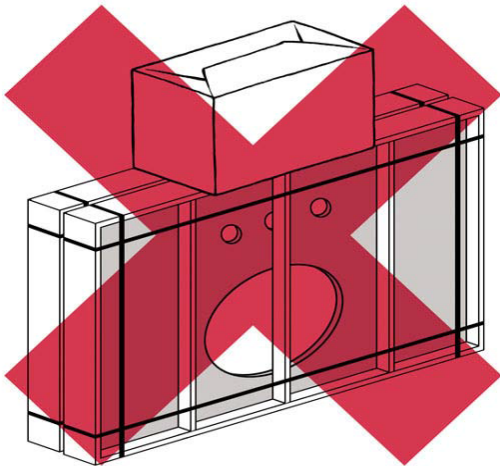


## CRATE STORAGE



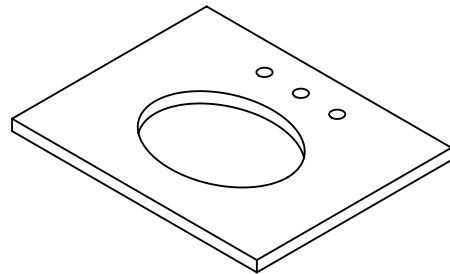
- Keep Stone Top in it's crate until installation.
- Store crate vertically in a safe location.



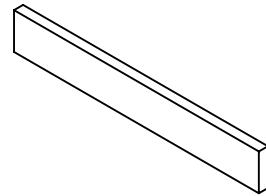
- Do not stack anything on top of crate.

### PARTS LIST

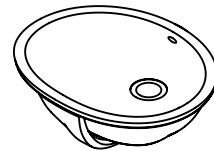
[ A ] STONE TOP Qty: 1



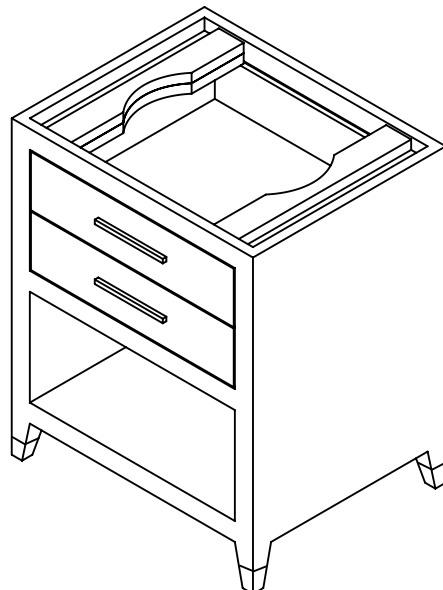
[ B ] BACKSPLASH (sold seperately) Qty: 1



[ C ] SINK BASIN Qty: 1



[ D ] VANITY BASE Qty: 1





## GRAYDON SHAGREEN POWDER WASHSTAND

---

### PRIMARY INSTALLATION REQUIREMENTS:

- Professional two-man crew.
- Water supply and drain piping installed according to local plumbing and building codes (sold separately).
- Wall and floor are square and plumb at installation site.
- Vanity Base [ D ] installed square and plumb with wall and floor. Vanity Base [ D ] also needs to be level.
- Ensure Stone Top [ A ] is the correct size to match the Vanity Base [ D ].

### TOOL AND MATERIAL REQUIREMENTS

- Flat, non-abrasive work surface (blanket or smooth cardboard)
- Sealant
- Phillips-head screwdriver
- Carpenter's level
- Utility blade

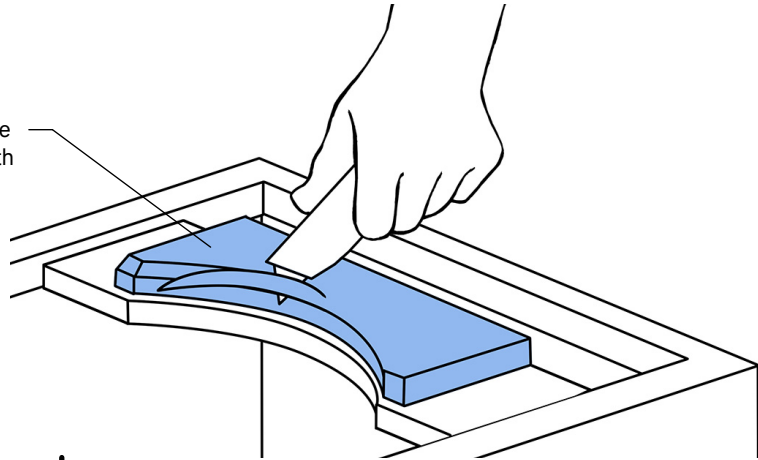
### CLEANING AND MAINTENANCE INSTRUCTIONS

- Avoid abrasive and harsh chemical cleaners.
- To maintain and protect luster of vanity sink components, RH bathroom care products are recommended.
- RH Stone Tops [ A ] have a honed finish, hand-polished edges, and are sealed twice with inert silicone sealant.
- Stone Top [ A ] should be re-sealed annually.

### SINK INSTALLATION

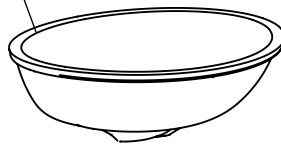
1

If neccessary, trim foam support to ensure proper Basin fit. Basin should sit even with top of Vanity Base



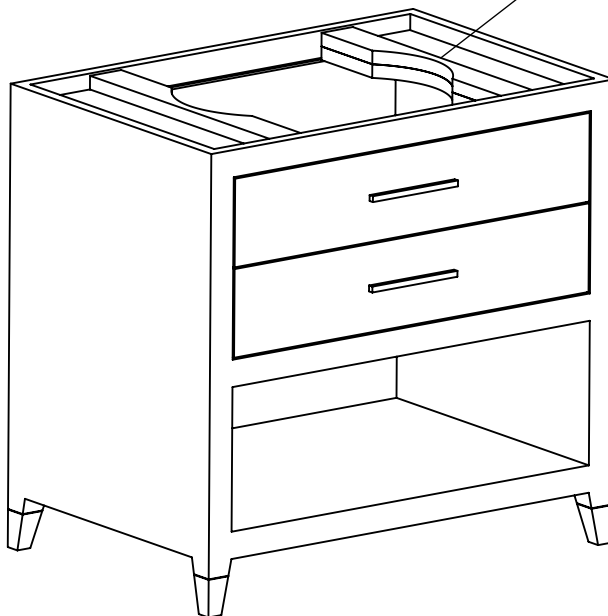
2

Apply sealant to Basin [ C ]



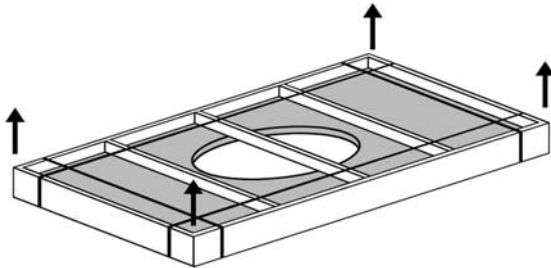
3

Place Basin [ C ] on support bars of Vanity Base [ D ]

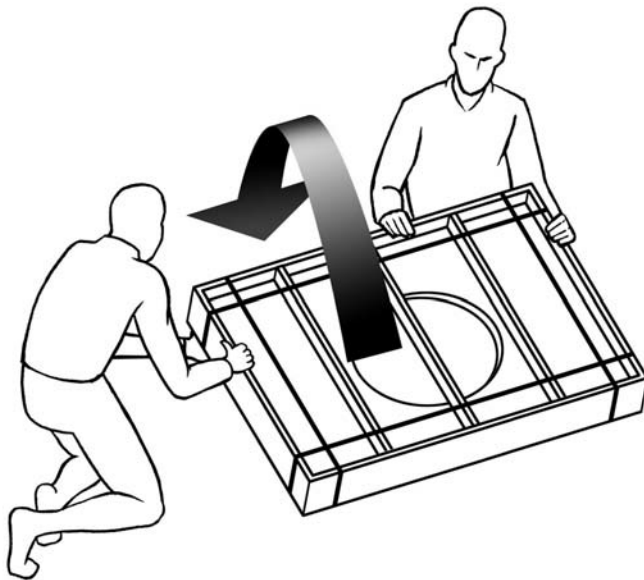


### STONE TOP UN-PACKING

**\*\* WHEN MOVING STONE TOP, ALWAYS USE A TWO-MAN CREW \*\***

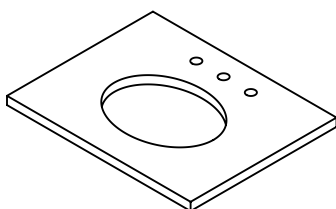


Remove metal bands, unscrew the slats or lid, and lift the Stone Top [ A ] out of the crate.



Carefully, without allowing any freefall, rotate the crate from vertical to flat.

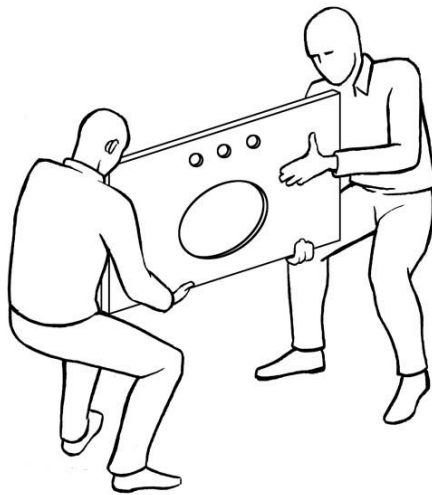
### STONE TOP INSPECTION



Inspect the Stone Top [ A ] for cracks or defects.  
If defects are detected, do not install and please call 877-777-7059.  
If no defects are detected; clean Stone Top [ A ] with a soft cloth.

### STONE TOP TRANSPORT

**\*\* WHEN MOVING STONE TOP, ALWAYS USE A TWO-MAN CREW \*\***



Always carry Stone Top [ A ] vertically



Do not carry Stone Top [ A ] horizontally as it increases the risk of breakage or cracking.

### STONE TOP INSTALLATION

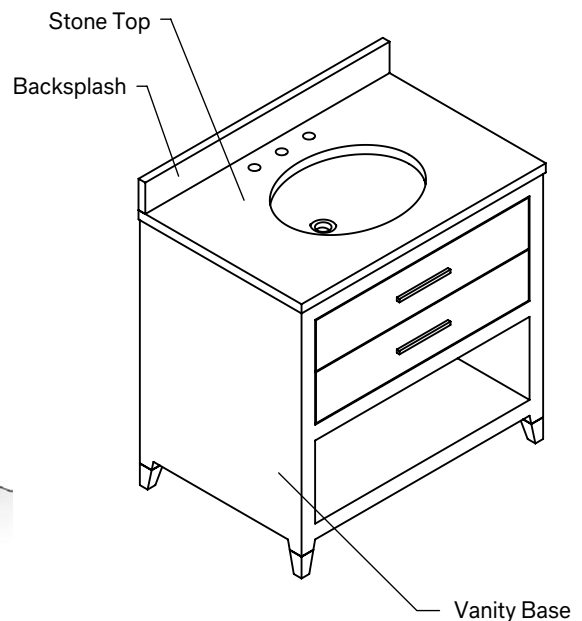
- If installing Stone Top [ A ] between two walls, stop here and follow the next set of instructions.

#### Standard Stone Top Installation Guidelines

1. Apply a continuous bead of sealant to the top face of Sink Basin [ C ] rim where the Stone Top [ A ] makes contact with the Sink Basin [ C ] .
2. Using a two-man crew, lift Stone Top [ A ] and set it on top of Vanity Base [ D ].
3. Apply silicone sealant to bottom and Backsplash [ B ], the rear of the Vanity Base [ D ] and wall (see illustration below).

#### Stone Top Installation Between Two Walls

1. Apply a continuous bead of sealant to the top face of Sink Basin [ C ] rim (where the Stone Top [ A ] makes contact with the Sink Basin [ C ] ).
2. Using a two-man crew, lift Stone Top [ A ] and set it's rear edge on the back of the Vanity Base [ D ] (closest to rear wall) -- see illustration below.
3. Lower front of Stone top onto the Vanity Base [ D ] - make sure both ends are lowered at the same rate.
4. Do not shimmy, twist or turn the Stone Top [ A ] while lowering as this increases the risk of breakage!
5. Apply silicone sealant to bottom and Backsplash [ B ], the rear of the Vanity Base [ D ] and wall (see illustration below).



# RH

## GRAYDON SHAGREEN POWDER WASHSTAND

