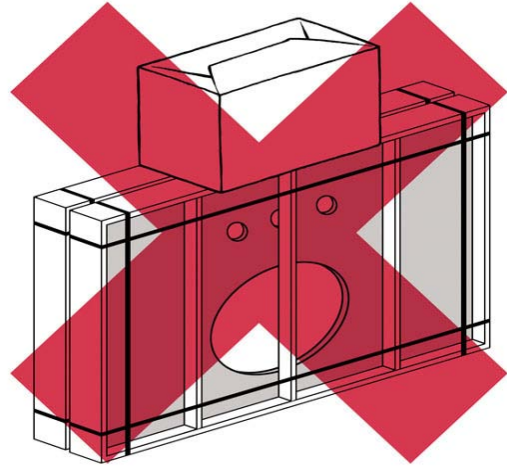
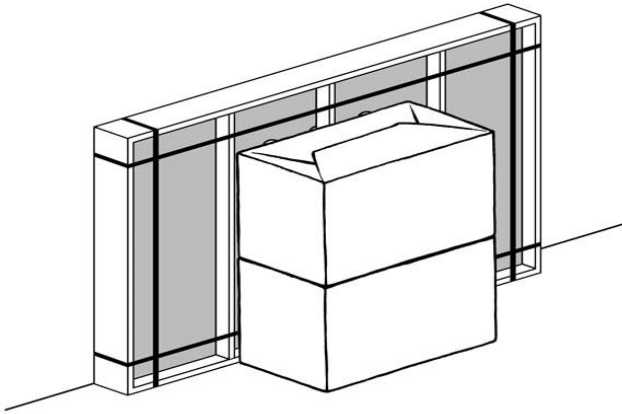


BOWERY SINGLE VANITY ASSEMBLY INSTRUCTIONS

1. Storage

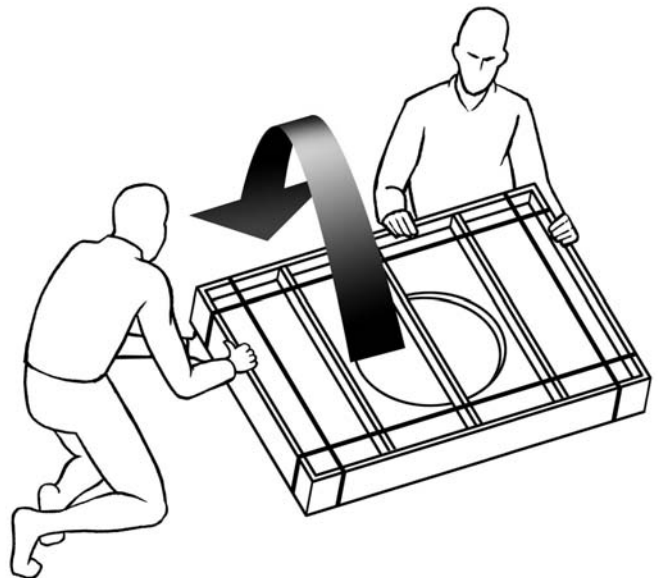
1. Keep marble top in its crate until installation.
2. Store crate vertically in a place safe from being hit or knocked over.
3. Do not stack anything on top of the crate.



2. Opening crate

1. Before unpacking make sure you have installation requirements present:
 1. A professional two man crew
 2. Sink base installed according to instructions with plumb wall and floor
 3. Ensure the marble top is the correct one for the base.
4. Tools and materials required:
 1. Flat, non-abrasive work surface, such as a blanket or smooth cardboard
 2. Carpenter's level
 3. Phillips head screwdriver
 4. Sealant

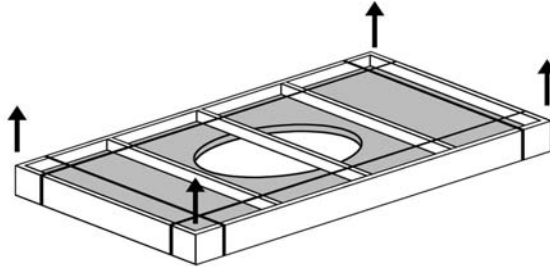
2. Carefully, without allowing any free fall, rotate the crate from vertical to flat. This is the only time the crate should be horizontal.



BOWERY SINGLE VANITY ASSEMBLY INSTRUCTIONS

3. Remove metal bands.

4. Unscrew the slats or lid and remove.



3. Examination of marble top

1. Examine the marble top for cracks or defects.

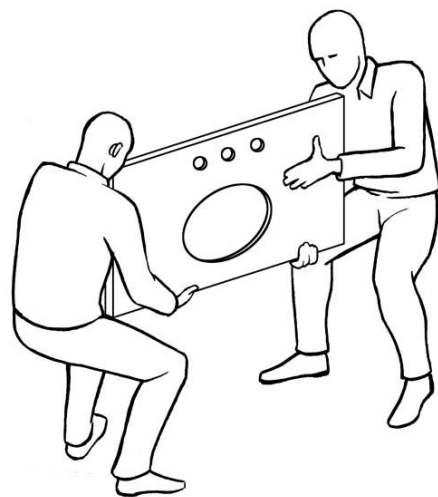
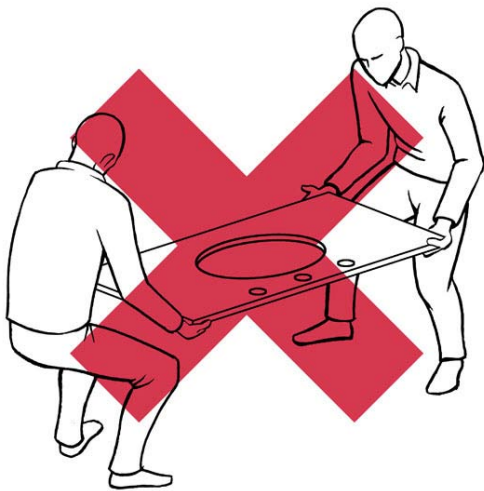
2. If defects are detected, please call 877-777-7059; do not install.

3. To clean the marble top, wipe with a soft cloth.

4. Installation of marble top

1. Always use a two man crew; a single person crew is much more likely to break or chip the marble top.

Double tops might require a 3 man crew.



BOWERY SINGLE VANITY ASSEMBLY INSTRUCTIONS



Caution! Installation between two walls requires special care.

2. Specific Instructions for installation between two walls

1. Set top on its edge at back of counter.
2. Lower the front of the marble top to the sink base, making sure both ends come down at the same rate.
3. Do not shimmy, twist or turn the top as you lower it. - risk of breakage!



If defects are detected please call 877-777-7059 - do not install.

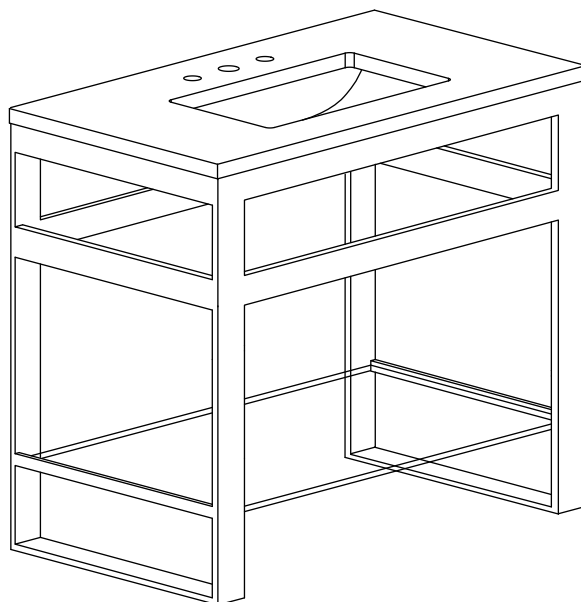
BOWERY SINGLE VANITY ASSEMBLY INSTRUCTIONS

Before You Begin:

Professional installation by two-person crew is required for this fixture. Install water supply and drain piping according to local plumbing and building codes. Insure that wall and floor are square and plumb at site of installation.

Tools and Materials Required:

1. Flat, nonabrasive work surface such as a blanket or smooth cardboard
2. Carpenter's level
3. Sealant
4. Phillips head screwdriver

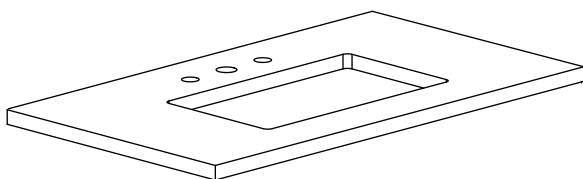


ASSEMBLED SINK

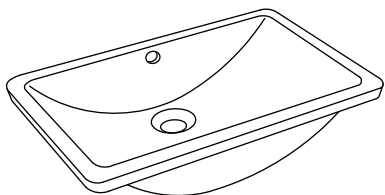
BOWERY SINGLE VANITY ASSEMBLY INSTRUCTIONS

Parts List

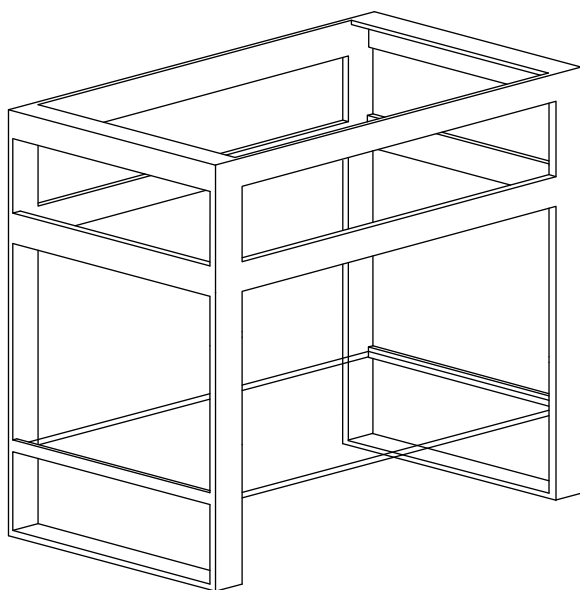
- A. Stone top (sold separately)



- B. Lavatory basin



- C. Vanity base



Parts List

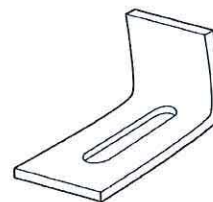
- D. Calk in anchor (x4)



- E. Calk in anchor sleeve (x4)



- F "L" Bracket (x4)



- G. Washer (x4)



- H. Screw (x4)



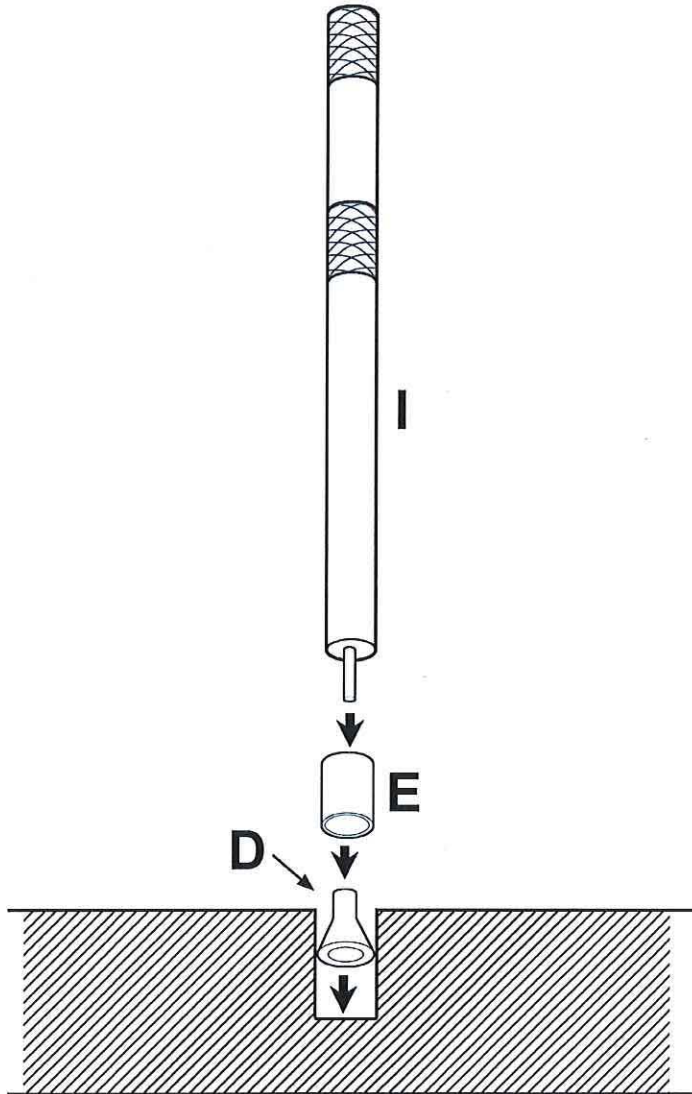
- I. Setting Tool



BOWERY SINGLE VANITY ASSEMBLY INSTRUCTIONS

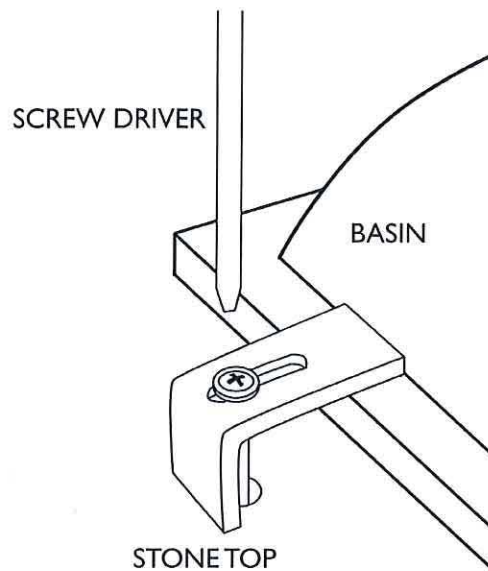
Assembly Instructions:

1. Using two people, carefully place stone top upside down on a flat, non-abrasive surface.
2. Using setting tool (I), hammer calk-in anchors (D) straight into pre-drilled holes on underside of stone top. (see illustration)



BOWERY SINGLE VANITY ASSEMBLY INSTRUCTIONS

3. Apply a continuous bead of sealant to the top surface of rim of lavatory basin (B) where it will contact underside of stone top. Position lavatory basin in its final location, upside down on underside of stone top. Overflow of lavatory basin should be on same side as pre-drilled faucet holes on stone top.
4. Place four "L" brackets (F) with long sides over the lavatory basin rim.
5. Insert screws (H) through washers (G) and "L" brackets. Screw into calk-in anchors with screwdriver. (See Illustration.) (Do not over-tighten.) Insure that lavatory basin is securely attached to stone top.



6. Using two people, turn stone top with attached basin over and position carefully on top of vanity base.

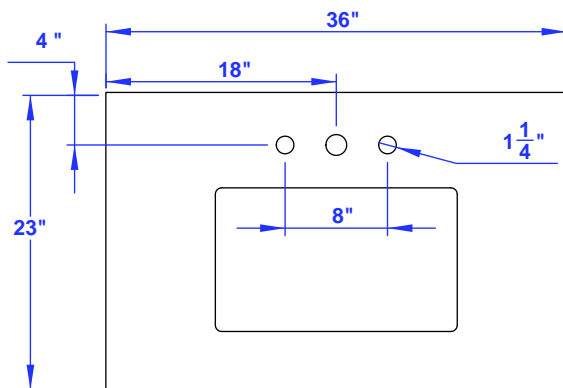
Cleaning and Maintenance Instructions:

Avoid abrasive and harsh chemical cleaners.

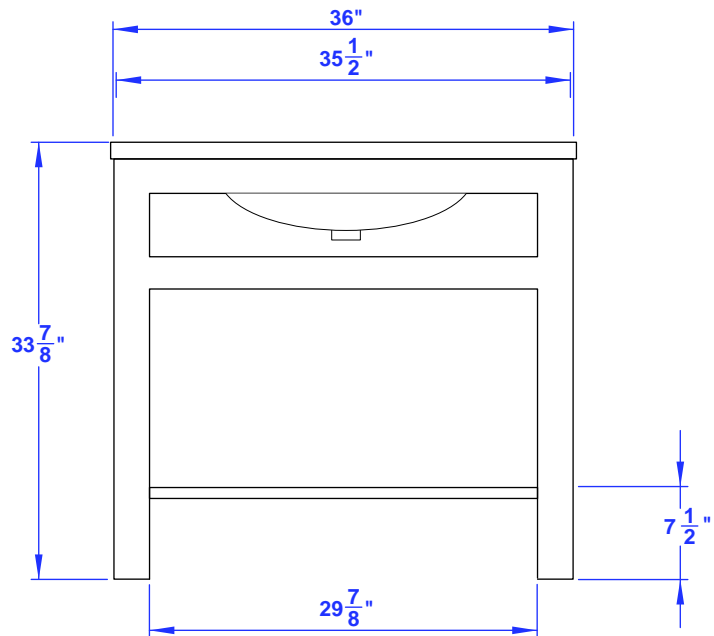
To maintain and protect luster of vanity sink components, Restoration Hardware Bathroom Cleaning Products are recommended.

Restoration Hardware natural stone tops have a honed finish and hand-polished edges. They are sealed twice before shipment with inert silicone sealant. For cleaning and maintenance, Restoration Hardware Stone Care Products are recommended. To maintain your natural stone top, reseal it once a year.

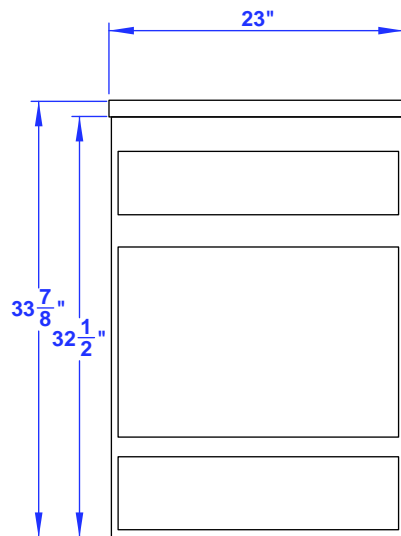
BOWERY SINGLE VANITY ASSEMBLY INSTRUCTIONS



TOP VIEW

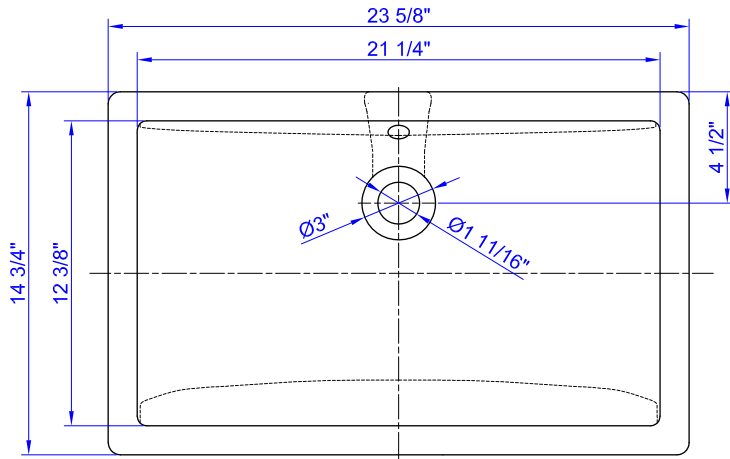


FRONT VIEW

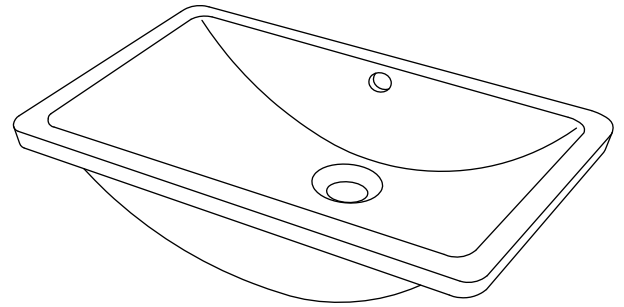


SIDE VIEW

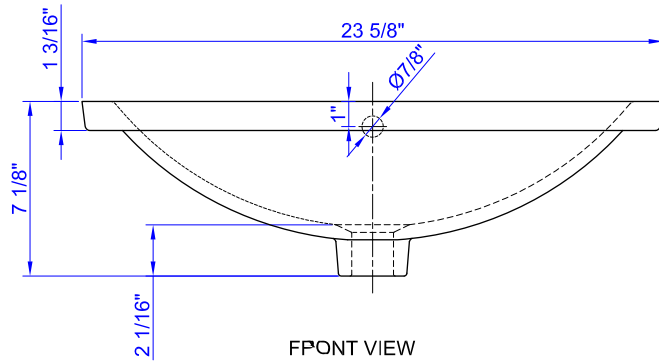
BOWERY SINGLE VANITY ASSEMBLY INSTRUCTIONS



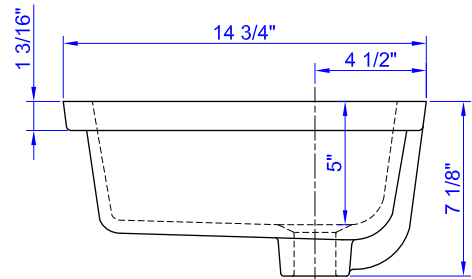
TOP VIEW



3D VIEW



FRONT VIEW



SIDE VIEW