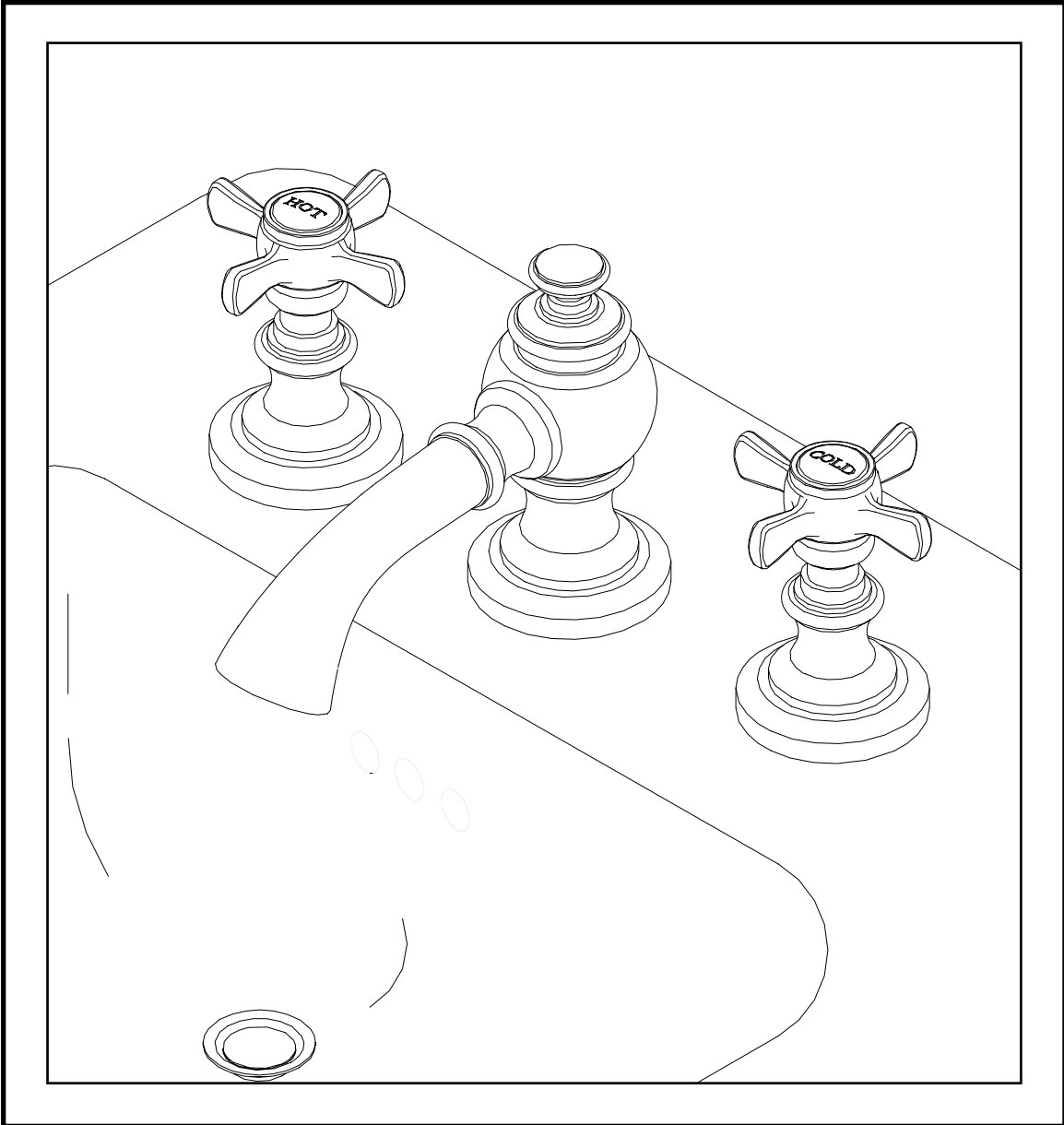


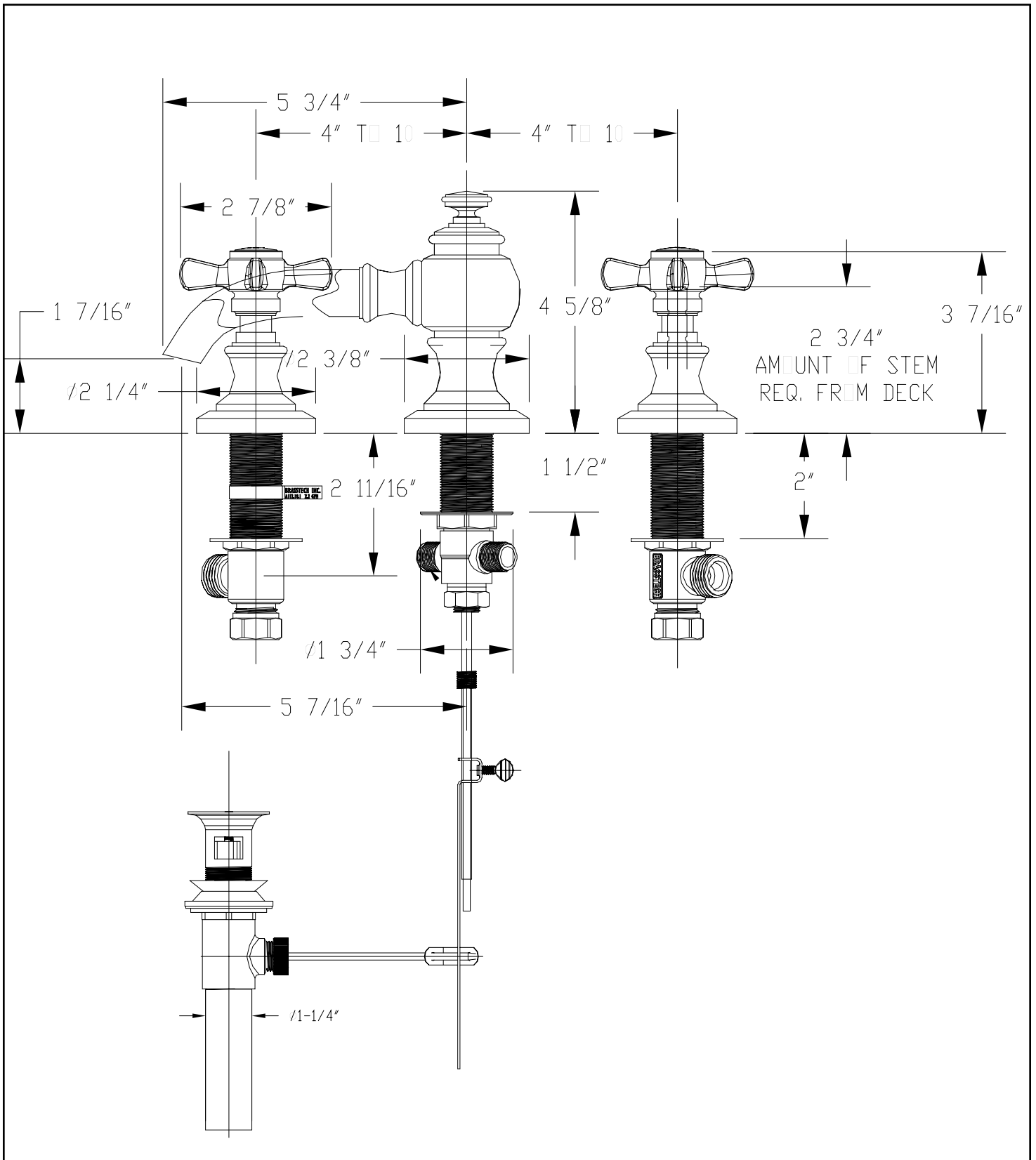


INSTALLATION INSTRUCTIONS



MODEL: LUGARNO
(RH-5900)

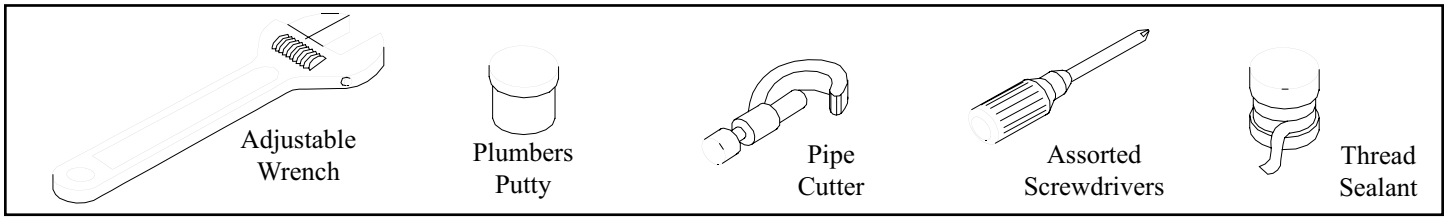
Restoration Hardware Faucet Product Size Specification Diagram



All Threaded Connections are 1/2" NPT

Dimensions are in Inches and Approximation of a Typical Installation

Common tools needed:

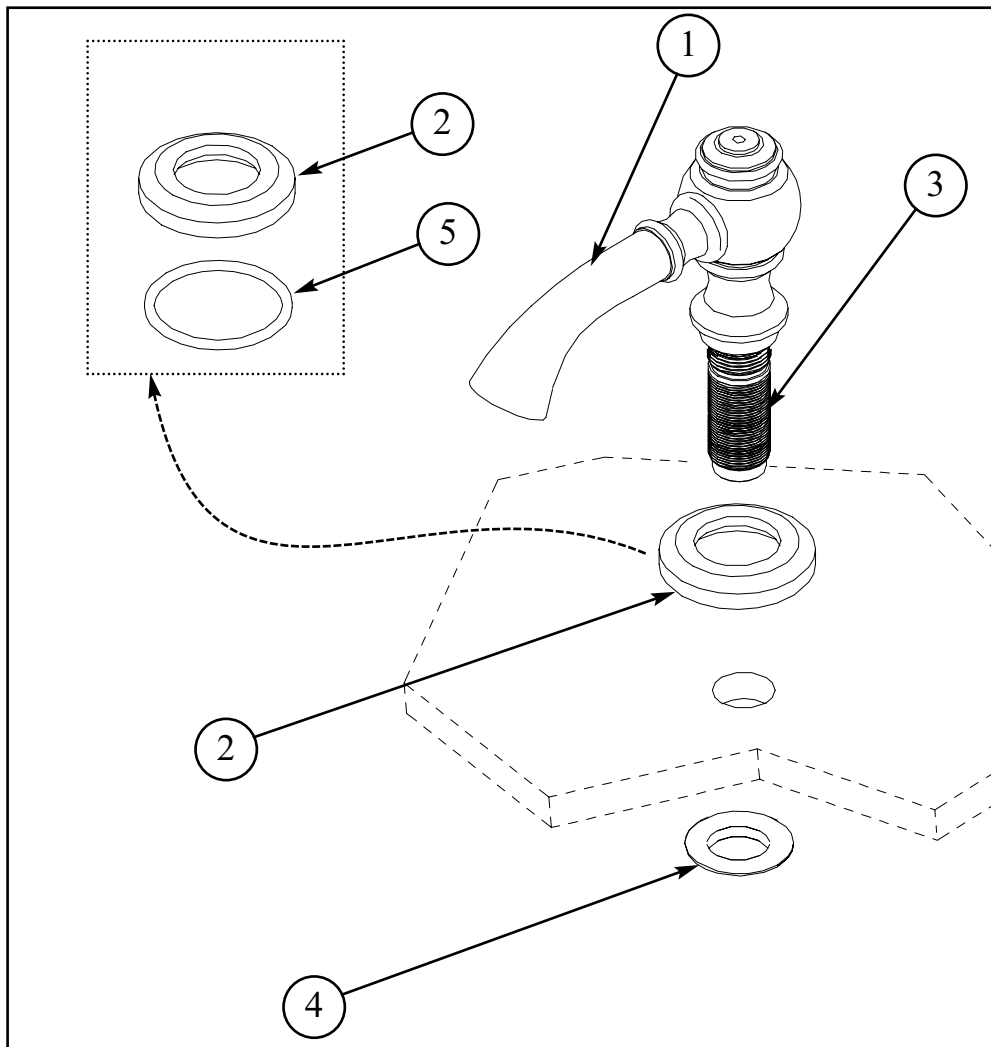


Installation Instructions

We Recommend Installation by a Licensed Plumbing Professional

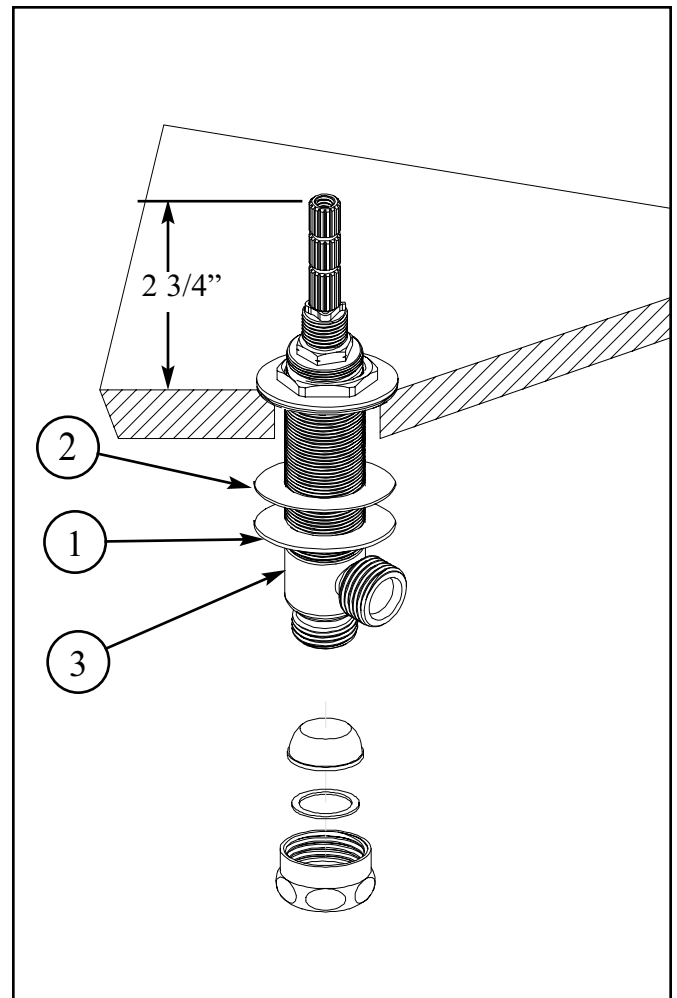
1. Spout Assembly

- Install O-RING (5) into the underside of SPOUT BASE (2).
- Insert SPOUT SHANK (3) through SPOUT BASE (2) and sink hole.
- Align SPOUT (1) and secure into place with FLANGE NUT (4).



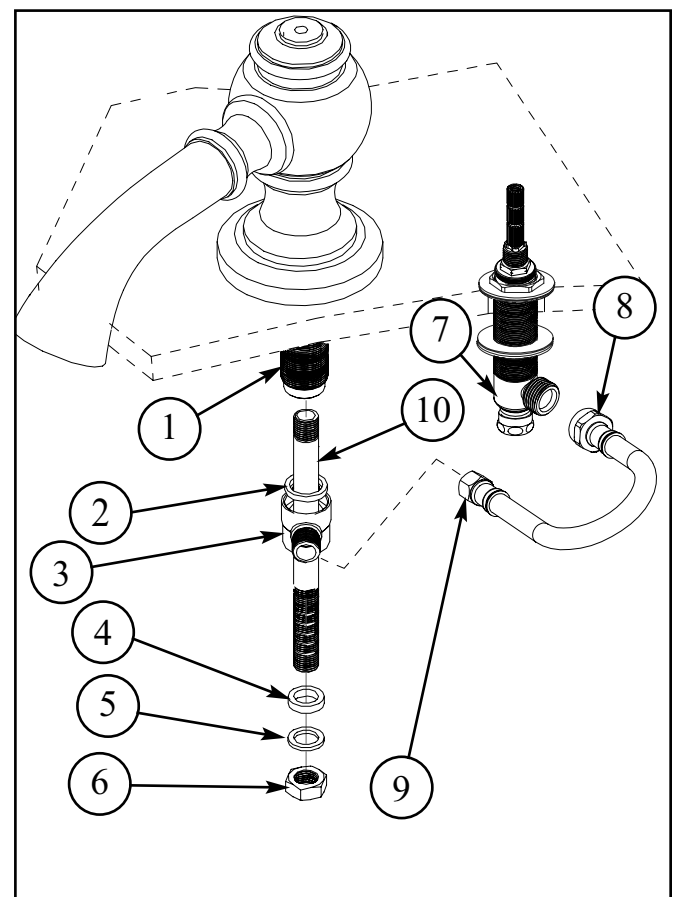
2. Valve Assembly

- Place FLANGE NUT (1) and FIBER WASHER (2) onto VALVE BODY (3).
- Insert VALVE BODY (3) through sink hole from underside of sink. VALVE BODY (3) should extend 2-3/4" above mounting surface. If necessary adjust lower FLANGE NUT (1).
- Place FIBER WASHER (2) and FLANGE NUT (1) onto upper position of VALVE BODY (3). Tighten upper FLANGE NUT (1).



3. Tee and Hose Assembly

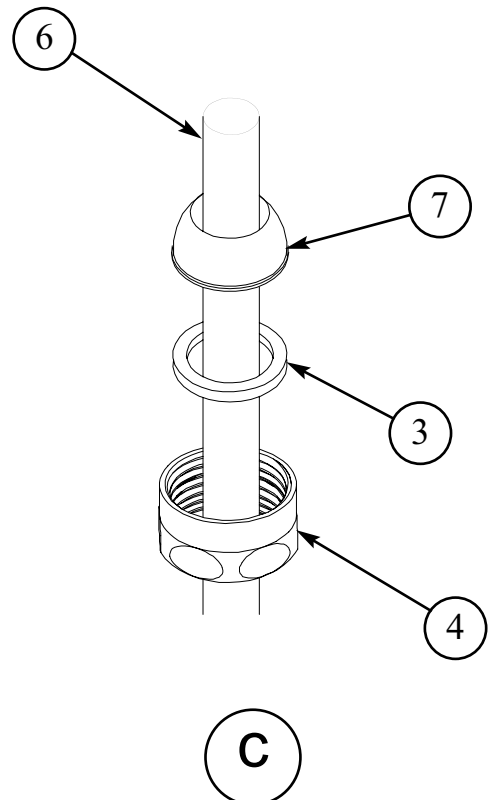
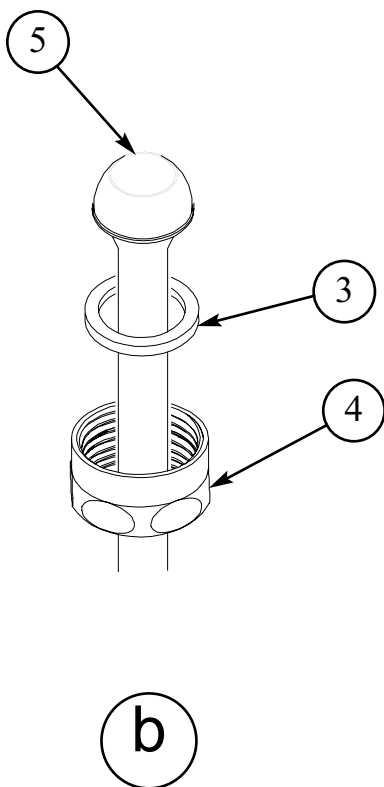
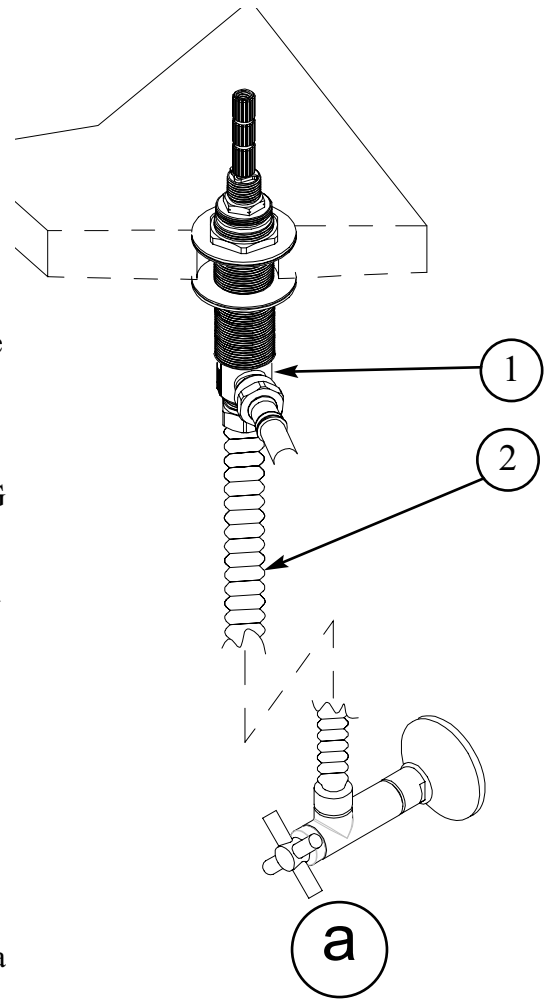
- Insert and thread NIPPLE (10) into SPOUT SHANK (1)
- Assemble WHITE WASHER (2), BRASS TEE (3), RUBBER WASHER (4), BRASS WASHER (5), and hand tighten LOCK NUT (6) onto SPOUT SHANK (1).
- Connect larger COUPLING NUT (8) to outlet of each VALVE BODY (7).
- Connect smaller COUPLING NUT (9) to each inlet of BRASS TEE (3).
- Hand tighten and secure each COUPLING NUT (8) with a wrench 1/4 turn.
- Using a wrench FIRMLY tighten LOCK NUT (6) onto SPOUT SHANK (1).



4. Make Water Supply Connections

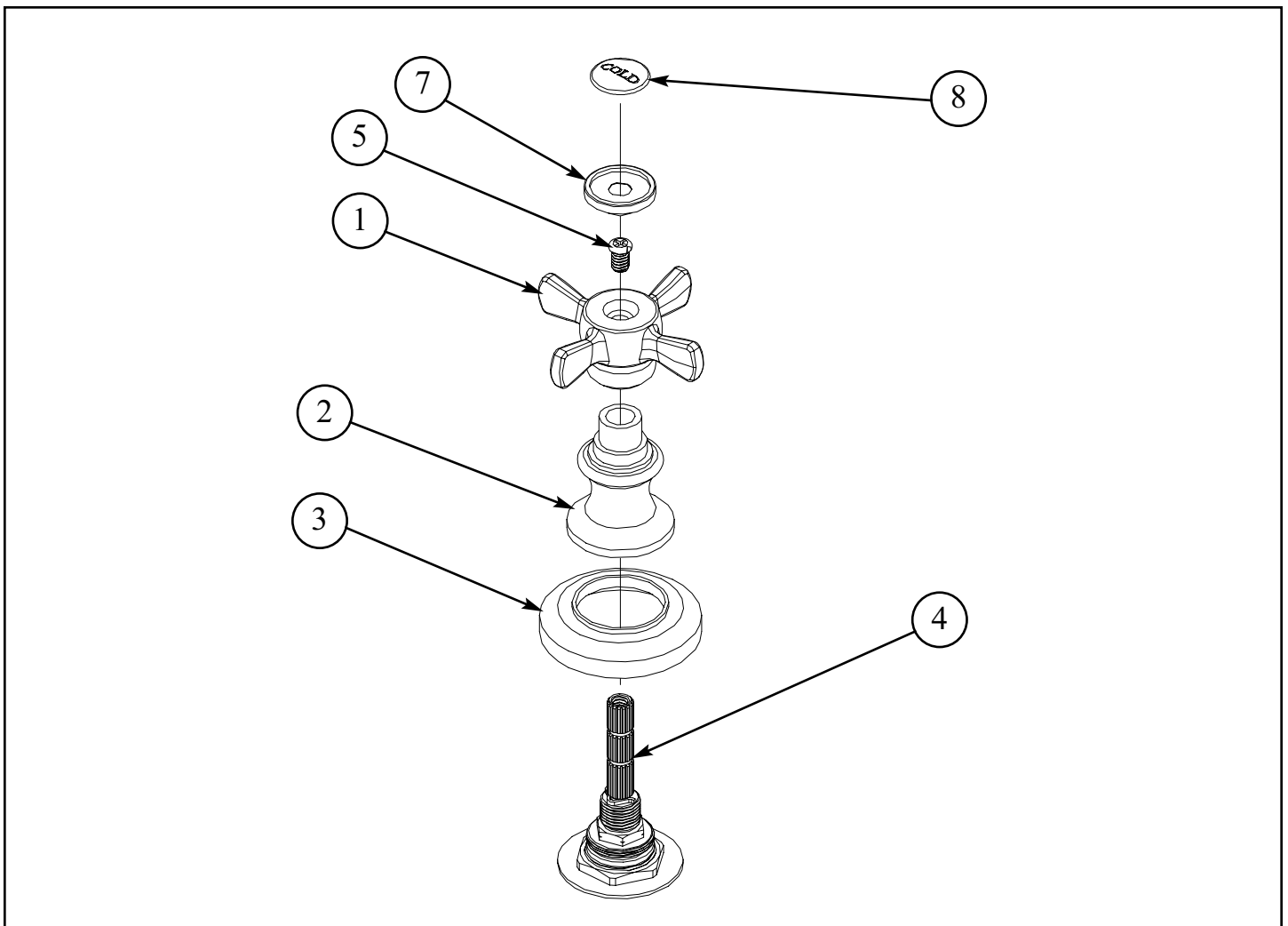
NOTE: SUPPLY RISERS MUST BE PURCHASED SEPARATELY

- Connect water supply to VALVE BODY(1) with one of the three following types of risers:
 - a. 1/2" IPS FLEXIBLE RISER (2), discard RUBBER NOSECONE (7), FRICTION WASHER (3) and COUPLING NUT (4).
 - b. 3/8" or 1/2" O.D. BULLNOSE RISER (5), place FRICTION WASHER (3) and COUPLING NUT (4) onto BULLNOSE RISER (5).
 - c. 1/2" O.D. COPPER RISER (6), place COUPLING NUT (4), FRICTION WASHER (3), and RUBBER NOSECONE (7) onto end of COPPER RISER(6).
- Use adjustable wrench to tighten connections. Do not over tighten and be careful not to kink copper supply when bending. Use a tube bender and cutter to properly adjust copper supply.



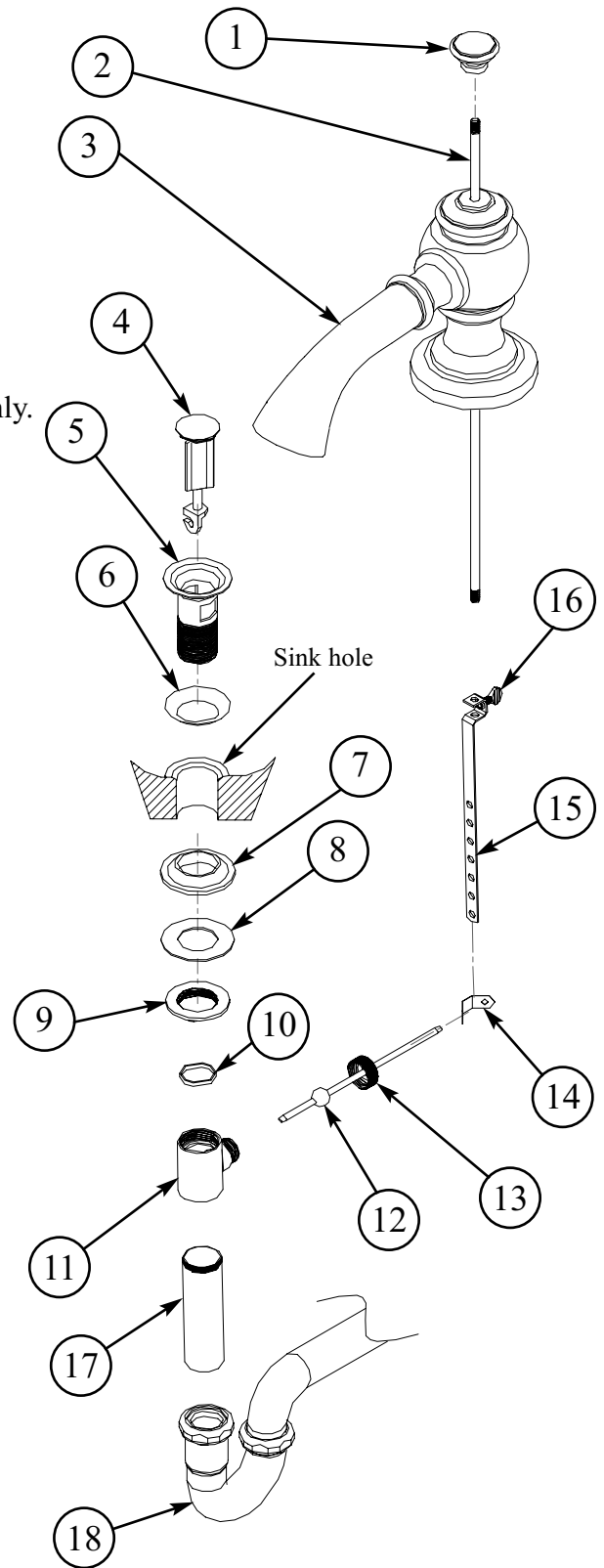
5. Install Handles

- Turn VALVE STEM (4) to OFF position.
- Place ESCUTCHEON (3) and BONNET (2) onto VALVE STEM (4).
- Place HANDLE (1) onto VALVE STEM (4). Check alignment, if necessary reposition handle on stem or rotate body for proper alignment. DO NOT loosen cartridge stem.
- Secure HANDLE (1) into place by tightening SCREW (5) into VALVE STEM (4). Press CAP (7) into place.
- Remove adhesive backing from BUTTON (8) align and press into CAP (7).



6. Install Pop- up Drain

- Attach POP- UP KNOB (1) onto POP- UP ROD (2) and insert through hole on SPOUT (3).
- Place DRAIN FLANGE (5) with WHITE WASHER (6) in place through sink drain hole.
NOTE: putty or silicone may be used instead of WHITE WASHER (6).
- From underside of sink install RUBBER CONE WASHER (7), FLAT WASHER (8), and FLANGE NUT (9) onto DRAIN FLANGE (5). Tighten FLANGE NUT (9) firmly.
- Place CLEAR WASHER (10) into DRAIN BODY (11) and tighten onto DRAIN FLANGE (5) aligning ball rod port to rear of sink.
- Secure BALL ROD (12) into DRAIN BODY (11) with BALL NUT (13).
- Apply thread sealant onto threads of TAILPIECE (17) and tighten into DRAIN BODY (11).
- Secure TAILPIECE (17) to TRAP DRAIN (18).
- If necessary trim TAILPIECE (17) for proper fit. Position STRAP (15) onto POP- UP ROD (2) and tighten SCREW (16).
- Remove one end of CLIP (14) from BALL ROD (12) by squeezing ends together while sliding.
- Insert BALL ROD (12) into lower holes of STRAP (15) and reassemble CLIP (14).
- Place STOPPER (4) into DRAIN FLANGE (5) and by twisting stopper attach to BALL ROD (12).
- Adjust stopper height by repositioning STRAP (15) on the POP- UP ROD (2) and tightening SCREW (16).



7. Test Installed Faucet

- With handles in OFF position, turn on water supplies and check all connections for leaks.
- Operate both handles to flush water lines thoroughly.
- Operate pop-up drain assembly and check for leaks.

Care and Cleaning

The lustrous finish on your Restoration Hardware Bathware fixture should be treated with care. Improper handling or cleaning can damage the surface of any metal finish. Use a soft cloth to wipe clean. Avoid harsh abrasive cleaner. Water contains lime and other mineral deposits that will be left on the surface after the water has evaporated. You can prevent these deposits from forming by always wiping the fixture dry immediately after use.

Technical Support and Customer Service

For technical support in the installation of your Restoration Hardware Bathware fixture, please call 1-866-417-5207 weekdays between the hours of 7:00am and 4:00pm PST.

For other questions regarding your order, to order additional components of the Restoration Hardware Bathware Collection, to order replacement parts, or to address warranty issues, please contact Restoration Hardware Customer Service at 1-877-747-4671.